



# **PowerPC 403GA**

## **32-Bit RISC**

### **Embedded Controller**

#### **Features**

- PowerPC™ RISC CPU and instruction set architecture
- Glueless interfaces to DRAM, SRAM, ROM, and peripherals, including byte and half-word devices
- Separate instruction cache and write-back data cache, both two-way set-associative
- Minimized interrupt latency
- Individually programmable on-chip controllers for:
  - Four DMA channels
  - DRAM, SRAM, and ROM banks
  - Peripherals
  - Serial port
  - External interrupts
- Flexible interface to external bus masters
- Hardware multiplier and divider for faster integer arithmetic
- Thirty-two 32-bit general purpose registers

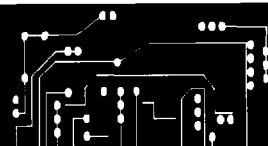
#### **Applications**

- Office automation (printers, copiers, fax machines)
- Consumer electronics and video games
- Set-top boxes
- Telecommunications and networking
- Personal digital assistants (PDA)

#### **Specifications**

- 25MHz and 33Mhz versions
- Interfaces to both 3V and 5V technologies
- Low-power 3.3V operation with built-in power management and stand-by mode
- Low-cost 160 lead PQFP package
- 0.5  $\mu$ m triple-level-metal CMOS

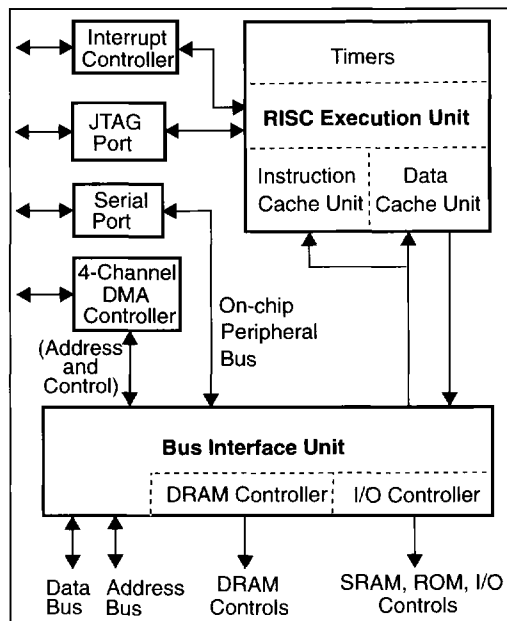
*Data*  
*Sheet*



#### **Overview**

The PowerPC 403GA 32-bit RISC embedded controller offers high performance and functional integration with low power consumption. The 403GA RISC CPU executes at sustained speeds approaching one cycle per instruction. On-chip caches and integrated DRAM and SRAM control functions reduce chip count and design complexity in systems, while improving system throughput.

External I/O devices or SRAM/DRAM memory banks can be directly attached to the 403GA bus interface unit (BIU). Interfaces for up to eight memory banks and I/O devices, including a maximum of four DRAM banks, can be configured individually, allowing the BIU to manage devices or memory banks with differing control, timing, or bus width requirements.



## IBM PowerPC 403GA

The 403GA RISC controller consists of a pipelined RISC processor core and several peripheral interface units: BIU, DMA controller, asynchronous interrupt controller, serial port, and JTAG debug port.

The RISC processor core includes the internal 2KB instruction cache and 1KB data cache, reducing overhead for data transfers to or from external memory. The instruction queue logic manages branch prediction, folding of branch and condition register logical instructions, and instruction prefetching to minimize pipeline stalls.

### RISC CPU

The RISC core comprises three tightly coupled functional units: the execution unit (EXU), the data cache unit (DCU), and the instruction cache unit (ICU). Each cache unit consists of a data array, tag array, and control logic for cache management and addressing. The execution unit consists of general purpose registers (GPR), special purpose registers (SPR), ALU, multiplier, divider, barrel shifter, and the control logic required to manage data flow and instruction execution within the EXU.

The EXU handles instruction decoding and execution, queue management, branch prediction, and branch folding. The instruction cache unit passes instructions to the queue in the EXU or, in the event of a cache miss, requests a fetch from external memory through the bus interface unit.

### General Purpose Registers

Data transfers to and from the EXU are handled through the bank of 32 GPRs, each 32 bits wide. Load and store instructions move data operands between the GPRs and the data cache unit, except in the cases of noncacheable data or cache misses. In such cases the DCU passes the address for the data read or write to the BIU. When noncacheable operands are being transferred, data can pass directly between the EXU and the BIU, which interfaces to the external memory being accessed.

### Special Purpose Registers

Special purpose registers are used to control

debug facilities, timers, interrupts, the protection mechanism, memory cacheability, and other architected processor resources. SPRs are accessed using move to/from special purpose register (mtspr/mfspr) instructions, which move operands between GPRs and SPRs.

Supervisory programs can write the appropriate SPRs to configure the operating and interface modes of the execution unit. The condition register (CR) and machine state register (MSR) are written by internal control logic with program execution status and machine state, respectively. Status of external interrupts is maintained in the external interrupt status register (EXISR). Fixed-point arithmetic exception status is available from the exception register (XER).

### Device Control Registers

Device control registers (DCR) are used to manage I/O interfaces, DMA channels, SRAM and DRAM memory configurations and timing, and status/address information regarding bus errors. DCRs are accessed using move to/from device control register (mtdcr/mfddcr) instructions, which move operands between GPRs and DCRs.

### Instruction Set

Table 1 summarizes the 403GA instruction set by categories of operations. Most instructions execute in a single cycle, with the exceptions of load/store multiple, load/store string, multiply, and divide instructions.

### Bus Interface Unit

The bus interface unit integrates the functional controls for data transfers and address operations other than those which the DMA controller handles. DMA transfers use the address logic in the BIU to output the memory addresses being accessed.

Control functions for direct-connect I/O devices and for DRAM, SRAM, or ROM banks are provided by the BIU. Burst access for SRAM, ROM, and page-mode DRAM devices is supported for cache fill and flush operations.

The BIU controls the transfer of data between the external bus and the instruction cache, the data

cache, or registers internal to the processor core. The BIU also arbitrates among external bus master and DMA transfers, the internal buses to the cache units and the register banks, and the serial port on the on-chip peripheral bus (OPB).

### Memory Addressing Regions

The 403GA can address an effective range of four gigabytes, mapped to 3.5GB (256MB for SRAM/ROM or other I/O, 256MB DRAM, and 3GB OPB/reserved) of physical address space containing twenty-eight 128MB regions. Cacheability with respect to the instruction or data cache is programmed via the instruction and data cache control registers, respectively.

Within the DRAM and SRAM/ROM regions, a total of eight banks of devices are supported. Each bank supports direct attachment of memories up to 64 MB. Each bank can be configured for 8-, 16-, or 32-bit devices.

For individual DRAM banks, the number of wait states, bank size,  $\overline{\text{RAS}}$ -to- $\overline{\text{CAS}}$  timing, use of an external address multiplexer (for external bus masters), and refresh rate are user-programmable. For each SRAM/ROM bank, the bank size,

bank location, number of wait states, and timings of chip selects, write enables, and output enables are all user-programmable.

### Instruction Cache Unit

The instruction cache unit (ICU) is a two-way set-associative 2KB cache memory unit with enhancements to support branch prediction and folding. The ICU is organized as 64 sets of 2 lines, each line containing 16 bytes. A separate bypass path is available to handle cache-inhibited instructions and to improve performance during line fill operations.

The cache can send two cached instructions per cycle to the execution unit, allowing instructions to be folded out of the queue without interrupting normal instruction flow. When a branch instruction is folded and executed in parallel with another instruction, the ICU provides two more instructions to replace both of the instructions just executed so that bandwidth is balanced between the ICU and the execution unit.

### Data Cache Unit

The data cache unit is provided to minimize the

Table 1. 403GA Instructions by Category

Category	Base Instructions
Data Movement	load, store
Arithmetic / Logical	add, subtract, negate, multiply, divide, and, or, xor, nand, nor, xnor, sign extension, count leading zeros
Comparison	compare, compare logical, compare immediate
Branch	branch, branch conditional
Condition	condition register logical
Rotate/Shift	rotate, rotate and mask, shift left, shift right
Cache Control	invalidate, touch, zero, flush, store
Interrupt Control	write to external interrupt enable bit, move to/from machine state register, return from interrupt, return from critical interrupt
Processor Management	system call, synchronize, move to/from device control registers, move to/from special purpose registers

access time of frequently used data items in main store. The 1KB cache is organized as a two-way set associative cache. There are 32 sets of 2 lines, each line containing 16 bytes of data. The cache features byte-writeability to improve the performance of byte and halfword store operations.

Cache operations are performed using a write-back strategy. A write-back cache only updates locations in main storage that corresponds to changed locations in the cache. Data is flushed from the cache to main storage whenever changed data needs to be removed from the cache to make room for other data.

The data cache may be disabled for a 128MB memory region via control bits in the data cache control register. A separate bypass path is available to handle cache-inhibited data operations and to improve performance during line fill operations.

Cache flushing and filling are triggered by load, store, and cache control instructions executed by the processor. Cache blocks are loaded starting at the requested fullword, continuing to the end of the block and then wrapping around to fill the remaining fullwords at the beginning of the block.

### DMA Controller

The four-channel DMA controller manages block data transfers in buffered, fly-by and memory-to-memory transfer modes with options for burst-mode operation. In fly-by and buffered modes, the DMA controller supports transactions between memory and peripheral devices.

Each DMA channel provides a control register, a source address register, a destination address register, a transfer count register, and a chained count register. Peripheral set-up cycles, wait cycles, and hold cycles can be programmed into each DMA channel control register. Each channel supports chaining operations. The DMA status register holds the status of all four channels.

### Exception Handling

Table 2 summarizes the 403GA exception priorities, types, and classes. Exceptions are generated by interrupts from internal and external

peripherals, instructions, the internal timer facility, debug events or error conditions. Six external interrupt signals are provided on the 403GA: one critical and five general-purpose, all individually maskable.

All exceptions fall into three basic classes: asynchronous imprecise exceptions, synchronous precise exceptions, and asynchronous precise exceptions. Asynchronous exceptions are caused by events external to processor execution, while synchronous exceptions are caused by instructions.

Except for a system reset or machine check, all 403GA exceptions are handled precisely. Precise handling implies that the address of the excepting instruction (synchronous exceptions other than system call) or the address of the next sequential instruction (asynchronous exceptions and system call) is passed to the exception handling routine. Precise handling also implies that all instructions prior to the excepting instruction have completed execution and have written back their results.

Asynchronous imprecise exceptions include system resets and machine checks. Synchronous precise exceptions include most debug exceptions, program exceptions, protection violations, system calls, and alignment error exceptions. Asynchronous precise exceptions include the critical interrupt exception, external interrupts, and internal timer facility exceptions and some debug events.

Only one exception is handled at a time. If multiple exceptions occur simultaneously, they are handled in priority order.

The 403GA processes exceptions as reset, critical, or noncritical. Four exceptions are defined as critical: machine check exceptions, debug exceptions, exceptions caused by an active level on the critical interrupt pin, and the first time-out from the watchdog timer.

When a noncritical exception is taken, special purpose register Save/Restore 0 (SRR0) is loaded with the address of the excepting instruction (synchronous exceptions other than system call) or the next sequential instruction to be pro-

cessed (asynchronous exceptions and system call). If the 403GA is executing a multicycle instruction (load/store multiple, load/store string, multiply or divide), the instruction is terminated and its address stored in SRR0. Save/Restore Register 1 (SRR1) is loaded with the contents of the machine state register. The MSR is then updated to reflect the new context of the machine. The new MSR contents take effect beginning with the first instruction of the exception handling routine.

At the end of the exception handling routine, execution of a return from interrupt (rfi) instruction forces the contents of SRR0 and SRR1 to be loaded into the program counter and the MSR, respectively. Execution then begins at the address in the program counter.

The four critical exceptions are processed in a similar manner. When a critical exception is taken, SRR2 and SRR3 hold the next sequential address to be processed when returning from the exception and the contents of the machine state register, respectively. After the critical exception handling routine, return from critical interrupt (rfci) forces the contents of SRR2 and SRR3 to

be loaded into the program counter and the MSR, respectively.

## Timers

The 403GA contains four timer functions: a time base, a programmable interval timer (PIT), a fixed interval timer (FIT), and a watchdog timer. The time base is a 56-bit counter incremented at the timer clock rate. The timer clock may be driven by either an internal signal equal to the processor clock rate or by a separate external timer clock pin. No interrupts are generated when the time base rolls over.

The programmable interval timer is a 32-bit register that is decremented at the same rate as the time base is incremented. The user preloads the PIT register with a value to create the desired delay. When the register is decremented to zeros, the timer stops decrementing, a bit is set in the timer status register (TSR), and a PIT interrupt is generated. Optionally, the PIT can be programmed to reload automatically the last value written to the PIT register, after which the PIT begins decrementing again. The timer control register (TCR) contains the interrupt enable for

Table 2. 403GA Exception Priorities, Types and Classes

Priority	Exception Type	Exception Class
1	System Reset	Asynchronous imprecise
2	Machine Check	Asynchronous imprecise
3	Debug	Synchronous precise (except UDE and EXC)
4	Critical Interrupt	Asynchronous precise
5	WatchdogTimer Time-out	Asynchronous precise
6	Program Exception, Protection Violation, and System Calls	Synchronous precise
7	Alignment Exceptions	Synchronous precise
8	External Interrupts	Asynchronous precise
9	Fixed Interval Timer	Asynchronous precise
10	Programmable Interval Timer	Asynchronous precise

the PIT interrupt.

The fixed interval timer generates periodic interrupts based on selected bits in the time base. Users may select one of four intervals for the timer period by setting the correct bits in the TCR. When the selected bit in the time base changes from 0 to 1, a bit is set in the TSR and a FIT interrupt is generated. The FIT interrupt enable is contained in the TCR.

The watchdog timer generates a periodic interrupt based on selected bits in the time base. Users may select one of four time periods for the interval and the type of reset generated if the watchdog timer expires twice without an intervening clear from software. If enabled, the watchdog timer generates a system reset unless an exception handler updates the watchdog timer status bit before the timer has completed two of the selected timer intervals.

### Serial Port

The 403GA serial port is capable of supporting RS232 standard serial communication, as well as high-speed execution (bit speed at a maximum of one-sixteenth of the SysClk processor clock rate). The serial clock which drives the serial port can come from the internal SysClk or an external clock source at the external serial clock pin (maximum of one-half the SysClk rate).

The 403GA serial port contains many features found only on advanced communications controllers, including the capability of being a peripheral for DMA transfers. An internal loopback mode supports diagnostic testing without requiring external hardware. An auto echo mode is included to retransmit received bits to the external device. Auto-resynchronization after a line break and false start bit detection are also provided, as well as operating modes that allow the serial port to react to handshaking line inputs or

control handshaking line outputs without software interaction. Program generation mode allows the serial port transmitter to be used for pulse width modulation with duty cycle variation controlled by frame size, baud rate, and data pattern.

### JTAG Port

The JTAG port has been enhanced to allow it to be used as a debug port. Through the JTAG test access port, debug software on a workstation can single-step the processor and interrogate internal processor state to facilitate software debugging. The standard JTAG boundary-scan register allows testing of circuitry external to the chip, primarily the board interconnect. Alternatively, the JTAG bypass register can be selected when no other test data register needs to be accessed during a board-level test operation.

### Real-Time Debug Port

The real-time debug port supports tracing the instruction stream being executed out of the instruction cache in real time. The trace status signals provide trace information while in real-time trace debug mode. This mode does not alter the performance of the processor.

### P/N Code

Table 3. PPC403GA Part Number

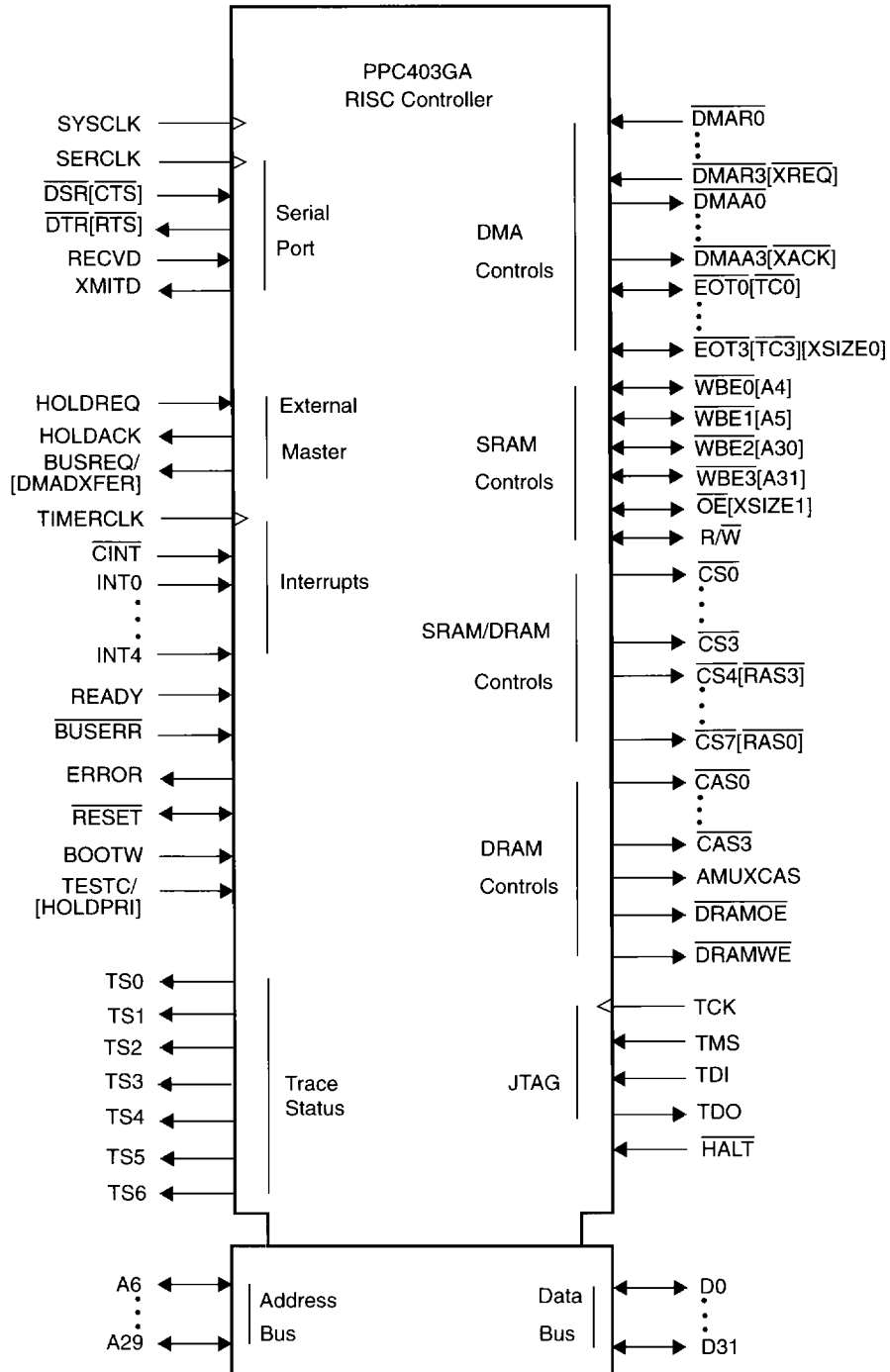
MHz	Part Number
25	PPC403GA-JC25C-1
33	PPC403GA-JC33C-1

#### Notes:

1. The dash number indicates the speed version.
2. The characters in the dash number indicate package type (J), revision level (C), and commercial version (C).

# Logic Symbol

Signals in brackets are multiplexed.



## Pin Functional Descriptions

Active-low signals are shown with overbars:  $\overline{\text{DMAR0}}$ . Multiplexed signals are alphabetized under the first (unmultiplexed) signal names on the same pins. The logic symbol on the preceding page shows all 403GA signals arranged by functional groups.

Table 4. 403GA Signal Descriptions

Signal Name	Pin	I/O Type	Function
A6	92	I/O	Address Bus Bit 6. When the 403GA is bus master, this is an address output from the 403GA. When the 403GA is not bus master, this is an address input from the external bus master, to determine bank register usage.
A7	93	I/O	Address Bus Bit 7. See description of A6
A8	94	I/O	Address Bus Bit 8. See description of A6
A9	95	I/O	Address Bus Bit 9. See description of A6
A10	96	I/O	Address Bus Bit 10. See description of A6
A11	97	I/O	Address Bus Bit 11. See description of A6
A12	98	O	Address Bus Bit 12. When the 403GA is bus master, this is an address output from the 403GA.
A13	99	O	Address Bus Bit 13. See description of A12
A14	103	O	Address Bus Bit 14. See description of A12
A15	104	O	Address Bus Bit 15. See description of A12
A16	105	O	Address Bus Bit 16. See description of A12
A17	106	O	Address Bus Bit 17. See description of A12
A18	107	O	Address Bus Bit 18. See description of A12
A19	108	O	Address Bus Bit 19. See description of A12
A20	109	O	Address Bus Bit 20. See description of A12
A21	110	O	Address Bus Bit 21. See description of A12
A22	112	I/O	Address Bus Bit 22. When the 403GA is bus master, this is an address output from the 403GA. When the 403GA is not bus master, this is an address input from the external bus master, to determine page crossings.
A23	113	I/O	Address Bus Bit 23. See description of A22
A24	114	I/O	Address Bus Bit 24. See description of A22
A25	115	I/O	Address Bus Bit 25. See description of A22
A26	116	I/O	Address Bus Bit 26. See description of A22



Table 4. 403GA Signal Descriptions

Signal Name	Pin	I/O Type	Function
A27	117	I/O	Address Bus Bit 27. See description of A22
A28	118	I/O	Address Bus Bit 28. See description of A22
A29	119	I/O	Address Bus Bit 29. See description of A22
AMuxCAS	139	O	DRAM External Address Multiplexer Select. AMuxCAS controls the select logic on an external multiplexer. If AMuxCAS is low, the multiplexer should select the row address for the DRAM and when AMuxCAS is 1, the multiplexer should select the column address.
BootW	11	I	Boot-up ROM Width Select. BootW is sampled before and after the RESET pin is active to determine the width of the boot-up ROM. If this pin is tied to logic 0 when sampled on reset, an 8-bit boot width is assumed. If BootW is tied to 1, a 32-bit boot width is assumed. For 16-bit boot widths, this pin should be tied to the RESET pin.
BusError	12	I	Bus Error Input. A logic 0 input to the BusError pin by an external device signals to the 403GA that an error occurred on the bus transaction. BusError is only sampled during the data transfer cycle or the last wait cycle of the transfer.
BusReq/ DMADXFER	135	O	Bus Request. While HoldAck is active, BusReq is active when the 403GA has a bus operation pending and needs to regain control of the bus. DMA Data Transfer. When HoldAck is not active, DMADXFER indicates a valid data transfer cycle. For DMA use, DMADXFER controls burst-mode fly-by DMA transfers between memory and peripherals. DMADXFER is not meaningful unless a DMA Acknowledge signal (DMAA0:DMAA3) is active. For transfer rates slower than one transfer per cycle, DMADXFER is active for one cycle when one transfer is complete and the next one starts. For transfer rates of one transfer per cycle, DMADXFER remains active throughout the transfer.
CAS0	142	O	DRAM Column Address Select 0. CAS0 is used with byte 0 of all DRAM banks.
CAS1	143	O	DRAM Column Address Select 1. CAS1 is used with byte 1 of all DRAM banks.
CAS2	144	O	DRAM Column Address Select 2. CAS2 is used with byte 2 of all DRAM banks.
CAS3	145	O	DRAM Column Address Select 3. CAS3 is used with byte 3 of all DRAM banks.
CINT	36	I	Critical Interrupt. To initiate a critical interrupt, the user must maintain a logic 0 on the CINT pin for a minimum of one SysClk clock cycle followed by a logic 1 on the CINT pin for at least one SysClk cycle.

Table 4. 403GA Signal Descriptions

Signal Name	Pin	I/O Type	Function
$\overline{CS0}$	155	O	SRAM Chip Select 0. Bank register 0 controls an SRAM bank, $\overline{CS0}$ is the chip select for that bank.
$\overline{CS1}$	154	O	SRAM Chip Select 1. See description of $\overline{CS0}$ but controls bank 1.
$\overline{CS2}$	153	O	SRAM Chip Select 2. See description of $\overline{CS0}$ but controls bank 2.
$\overline{CS3}$	152	O	SRAM Chip Select 3. See description of $\overline{CS0}$ but controls bank 3.
$\overline{CS4/RAS3}$	151	O	Chip Select 4/ DRAM Row Address Select 3. When bank register 4 is configured to control an SRAM bank, $\overline{CS4/RAS3}$ functions as a chip select. When bank register 4 is configured to control a DRAM bank, $\overline{CS4/RAS3}$ is the row address select for that bank.
$\overline{CS5/RAS2}$	148	O	Chip Select 5/ DRAM Row Address Select 2. See description of $\overline{CS4/RAS3}$ but controls bank 5.
$\overline{CS6/RAS1}$	147	O	Chip Select 6/ DRAM Row Address Select 1. See description of $\overline{CS4/RAS3}$ but controls bank 6.
$\overline{CS7/RAS0}$	146	O	Chip Select 7/ DRAM Row Address Select 0. See description of $\overline{CS4/RAS3}$ but controls bank 7.
D0	42	I/O	Data bus bit 0 (Most significant bit)
D1	43	I/O	Data bus bit 1
D2	44	I/O	Data bus bit 2
D3	45	I/O	Data bus bit 3
D4	46	I/O	Data bus bit 4
D5	47	I/O	Data bus bit 5
D6	48	I/O	Data bus bit 6
D7	51	I/O	Data bus bit 7
D8	52	I/O	Data bus bit 8
D9	53	I/O	Data bus bit 9
D10	54	I/O	Data bus bit 10
D11	55	I/O	Data bus bit 11
D12	56	I/O	Data bus bit 12
D13	57	I/O	Data bus bit 13
D14	58	I/O	Data bus bit 14
D15	62	I/O	Data bus bit 15
D16	63	I/O	Data bus bit 16

Table 4. 403GA Signal Descriptions

Signal Name	Pin	I/O Type	Function
D17	64	I/O	Data bus bit 17
D18	65	I/O	Data bus bit 18
D19	66	I/O	Data bus bit 19
D20	67	I/O	Data bus bit 20
D21	68	I/O	Data bus bit 21
D22	71	I/O	Data bus bit 22
D23	72	I/O	Data bus bit 23
D24	73	I/O	Data bus bit 24
D25	74	I/O	Data bus bit 25
D26	75	I/O	Data bus bit 26
D27	76	I/O	Data bus bit 27
D28	77	I/O	Data bus bit 28
D29	78	I/O	Data bus bit 29
D30	79	I/O	Data bus bit 30
D31	82	I/O	Data bus bit 31
$\overline{\text{DMAA0}}$	156	O	DMA Channel 0 Acknowledge. $\overline{\text{DMAA0}}$ has an active level when a transaction is taking place between the 403GA and a peripheral.
$\overline{\text{DMAA1}}$	157	O	DMA Channel 1 Acknowledge. See description of $\overline{\text{DMAA0}}$ .
$\overline{\text{DMAA2}}$	158	O	DMA Channel 2 Acknowledge. See description of $\overline{\text{DMAA0}}$ .
$\overline{\text{DMAA3}} / \text{XACK}$	159	O	DMA Channel 3 Acknowledge / External Master Transfer Acknowledge. When the 403GA is bus master, this signal is $\overline{\text{DMAA3}}$ ; see description of $\overline{\text{DMAA0}}$ . When the 403GA is not the bus master, this signal is XACK, an output from the 403GA which has an active level when data is valid during an external bus master transaction.
$\overline{\text{DMAR0}}$	2	I	DMA Channel 0 Request. When the 403GA is the bus master, external devices request a DMA transfer on channel 0 by putting a logic 0 on $\overline{\text{DMAR0}}$ . When the 403GA HoldAck output is active and the 403GA is not the bus master, active requests on $\overline{\text{DMAR0}}$ are ignored until the 403GA becomes the bus master.
$\overline{\text{DMAR1}}$	3	I	DMA Channel 1 Request. See description of $\overline{\text{DMAR0}}$
$\overline{\text{DMAR2}}$	4	I	DMA Channel 2 Request. See description of $\overline{\text{DMAR0}}$

Table 4. 403GA Signal Descriptions

Signal Name	Pin	I/O Type	Function
$\overline{\text{DMAR3}} / \text{XREQ}$	5	I	DMA Channel 3 Request. When the 403GA is the bus master, external devices request a DMA transfer on channel 3 by putting a logic 0 on $\overline{\text{DMAR3}}$ . See description of $\overline{\text{DMAR0}}$ . When the 403GA is not the bus master, $\overline{\text{DMAR3}}$ is used as the $\text{XREQ}$ input. The external bus master places a logic 0 on $\text{XREQ}$ when the 403GA HoldAck is active and external bus master wishes to initiate a transfer to the DRAM controlled by the 403GA DRAM controller.
$\overline{\text{DRAMOE}}$	137	O	DRAM Output Enable. $\overline{\text{DRAMOE}}$ has an active level when either the 403GA or an external bus master is reading from a DRAM bank. This signal enables the selected DRAM bank to drive the data bus.
$\overline{\text{DRAMWE}}$	138	O	DRAM Write Enable. $\overline{\text{DRAMWE}}$ has an active level when either the 403GA or an external bus master is writing to a DRAM bank.
$\overline{\text{DSR}} / \overline{\text{CTS}}$	28	I	Data Set Ready / Clear to Send. The function of this pin as either $\overline{\text{DSR}}$ or $\overline{\text{CTS}}$ is selectable via the Serial Port Configuration bit in the IOCR.
$\overline{\text{DTR}} / \overline{\text{RTS}}$	88	O	Data Terminal Ready / Request to Send. The function of this pin as either $\overline{\text{DTR}}$ or $\overline{\text{RTS}}$ is selectable via the Serial Port Configuration bit in the IOCR.
$\overline{\text{EOT0}} / \overline{\text{TC0}}$	128	I/O	End of Transfer 0 / Terminal Count 0. The function of the $\overline{\text{EOT0}} / \overline{\text{TC0}}$ is controlled via the $\overline{\text{EOT}} / \overline{\text{TC}}$ bit in the DMA Channel 0 Control Register. When $\overline{\text{EOT0}} / \overline{\text{TC0}}$ is configured as an End of Transfer pin, external users may stop a DMA transfer by placing a logic 0 on this input pin. When configured as a Terminal Count pin, the 403GA signals the completion of a DMA transfer by placing a logic 0 on this pin.
$\overline{\text{EOT1}} / \overline{\text{TC1}}$	131	I/O	End of Transfer 1 / Terminal Count 1. See description of $\overline{\text{EOT0}} / \overline{\text{TC0}}$ .
$\overline{\text{EOT2}} / \overline{\text{TC2}}$	132	I/O	End of Transfer 2 / Terminal Count 2. See description of $\overline{\text{EOT0}} / \overline{\text{TC0}}$ .
$\overline{\text{EOT3}} / \overline{\text{TC3}} / \text{XSize0}$	133	I/O	End of Transfer 3 / Terminal Count 3 / External Master Transfer Size 0. When the 403GA is bus master, this pin has the same function as $\overline{\text{EOT0}} / \overline{\text{TC0}}$ . When the 403GA is not bus master, $\overline{\text{EOT3}} / \overline{\text{TC3}} / \text{XSize0}$ is used as one of two external transfer size input bits, $\text{XSize0:1}$ .
Error	136	O	System Error. Error goes to a logic 1 whenever a machine check error is detected in the 403GA. The Error pin then remains a logic 1 until the machine check error is cleared in the Exception Syndrome Register and/or Bus Error Syndrome Register.

Table 4. 403GA Signal Descriptions

Signal Name	Pin	I/O Type	Function
GND	1		Ground. All ground pins must be used.
	10		Ground. All ground pins must be used.
	15		Ground. All ground pins must be used.
	29		Ground. All ground pins must be used.
	30		Ground. All ground pins must be used.
	41		Ground. All ground pins must be used.
	50		Ground. All ground pins must be used.
	59		Ground. All ground pins must be used.
	60		Ground. All ground pins must be used.
	70		Ground. All ground pins must be used.
	81		Ground. All ground pins must be used.
	90		Ground. All ground pins must be used.
	101		Ground. All ground pins must be used.
	102		Ground. All ground pins must be used.
	111		Ground. All ground pins must be used.
	121		Ground. All ground pins must be used.
	130		Ground. All ground pins must be used.
	141		Ground. All ground pins must be used.
	150		Ground. All ground pins must be used.
Halt	9	I	Halt from external debugger, active low.
HoldAck	134	O	Hold Acknowledge. HoldAck outputs a logic 1 when the 403GA relinquishes its external buses to an external bus master. The external bus master uses the HoldReq pin to request use of the 403GA buses.
HoldReq	14	I	Hold Request. External bus masters can request the 403GA bus by placing a logic 1 on this pin. When the 403GA HoldAck pin is logic 1, the 403GA has relinquished its address, data and control buses to the external master. The external bus master relinquishes the buses to the 403GA by deasserting HoldReq. The 403GA then deasserts HoldAck during the following cycle.

Table 4. 403GA Signal Descriptions

Signal Name	Pin	I/O Type	Function
INT0	31	I	Interrupt 0. INT0 is an interrupt input to the 403GA and users may program the pin to be either edge-triggered or level triggered and may also program the polarity to be active high or active low. The IOCR contains the bits necessary to program the trigger type and polarity.
INT1	32	I	Interrupt 1. See description of INT0
INT2	33	I	Interrupt 2. See description of INT0
INT3	34	I	Interrupt 3. See description of INT0
INT4	35	I	Interrupt 4. See description of INT0
IVR	39		Interface voltage reference. When connected to 3.3V supply, allows the device to interface to an exclusively 3V system. When connected to 5V supply, allows the device to interface to 5V or mixed 3V/5V system. If any input or output connects to 5V system, this pin must be connected to 5V supply.
$\overline{OE}$ / XSize1	126	O/I	Output Enable / External Master Transfer Size 1. When the 403GA is bus master, $\overline{OE}$ enables the selected SRAMs to drive the data bus. The timing parameters of $\overline{OE}$ relative to the chip select, $\overline{CS}$ , are programmable via bits in the 403GA bank registers. When the 403GA is not bus master, $\overline{OE}$ / XSize1 is used as one of two external transfer size input bits, XSize0:1.
Ready	13	I	Ready. Ready is used to insert externally generated (device-paced) wait states into bus transactions. The Ready pin is enabled via the Ready Enable bit in 403GA bank registers.
RecvD	27	I	Serial Port Receive Data
$\overline{Reset}$	91	I/O	Reset. A logic 0 input placed on this pin for eight SysClk cycles causes the 403GA to <u>begin</u> a system reset. When a system reset is internally invoked, the Reset pin becomes a <u>logic 0 output</u> for three SysClk cycles, and the system must maintain Reset active for a total of eight cycles minimum.
R/ $\overline{W}$	127	I/O	Read / Write. When the 403GA is bus master, R/ $\overline{W}$ is an output which is high when <u>data</u> is read from memory and low when data is written to memory. R/ $\overline{W}$ is driven with the same timings as the address bus. When the 403GA is not bus master, R/ $\overline{W}$ is an input from the external bus master which indicates the direction of data transfer.
SerClk	26	I	Serial Port Clock. Through the Serial Port Clock Source bit in the Input/Output Configuration register (IOCR), users may choose the serial port clock source from either the input on the SerClk pin or processor SysClk. The maximum allowable input frequency into SerClk is half the SysClk frequency.

Table 4. 403GA Signal Descriptions

Signal Name	Pin	I/O Type	Function
SysClk	22	I	SysClk is the processor system clock input. SysClk supports a 50/50 duty cycle clock input at the rated chip frequency.
TCK	6	I	JTAG Test Clock Input. TCK is the clock source for the 403GA test access port (TAP). The maximum clock rate into the TCK pin is one half of the processor SysClk clock rate.
TDI	8	I	Test Data In. The TDI is used to input serial data into the TAP. When the TAP enables the use of the TDI pin, the TDI pin is sampled on the rising edge of TCK and this data is input to the selected TAP shift register.
TDO	16	O	Test Data Output. TDO is used to transmit data from the 403GA TAP. Data from the selected TAP shift register is shifted out on TDO.
TestA	23	I	Reserved for manufacturing test. Tied low for normal operation.
TestB	24	I	Reserved for manufacturing test. Tied high for normal operation.
TestC/Hold-Pri	37	I	TestC. Reserved for manufacturing test during the reset interval. While Reset is active, this signal should be tied low for normal operation. HoldReq Priority. When Reset is not active, this signal is sampled to determine the priority of the external bus master signal HoldReq. If HoldPri = 0 then the HoldReq signal is considered high priority, otherwise HoldReq is considered low priority.
TestD	38	I	Reserved for manufacturing test. Tied low for normal operation.
TimerClk	25	I	Timer Facility Clock. Through the Timer Clock Source bit in the Input/Output Configuration register (IOCR), users may choose the clock source for the Timer facility from either the input on the TimerClk pin or processor SysClk. The maximum input frequency into TimerClk is half the SysClk frequency.
TMS	7	I	Test Mode Select. The TMS pin is sampled by the TAP on the rising edge of TCK. The TAP state machine uses the TMS pin to determine the mode in which the TAP operates.
TS0	17	O	Trace Status 0
TS1	18	O	Trace Status 1
TS2	19	O	Trace Status 2
TS3	86	O	Trace Status 3
TS4	85	O	Trace Status 4
TS5	84	O	Trace Status 5
TS6	83	O	Trace Status 6

Table 4. 403GA Signal Descriptions

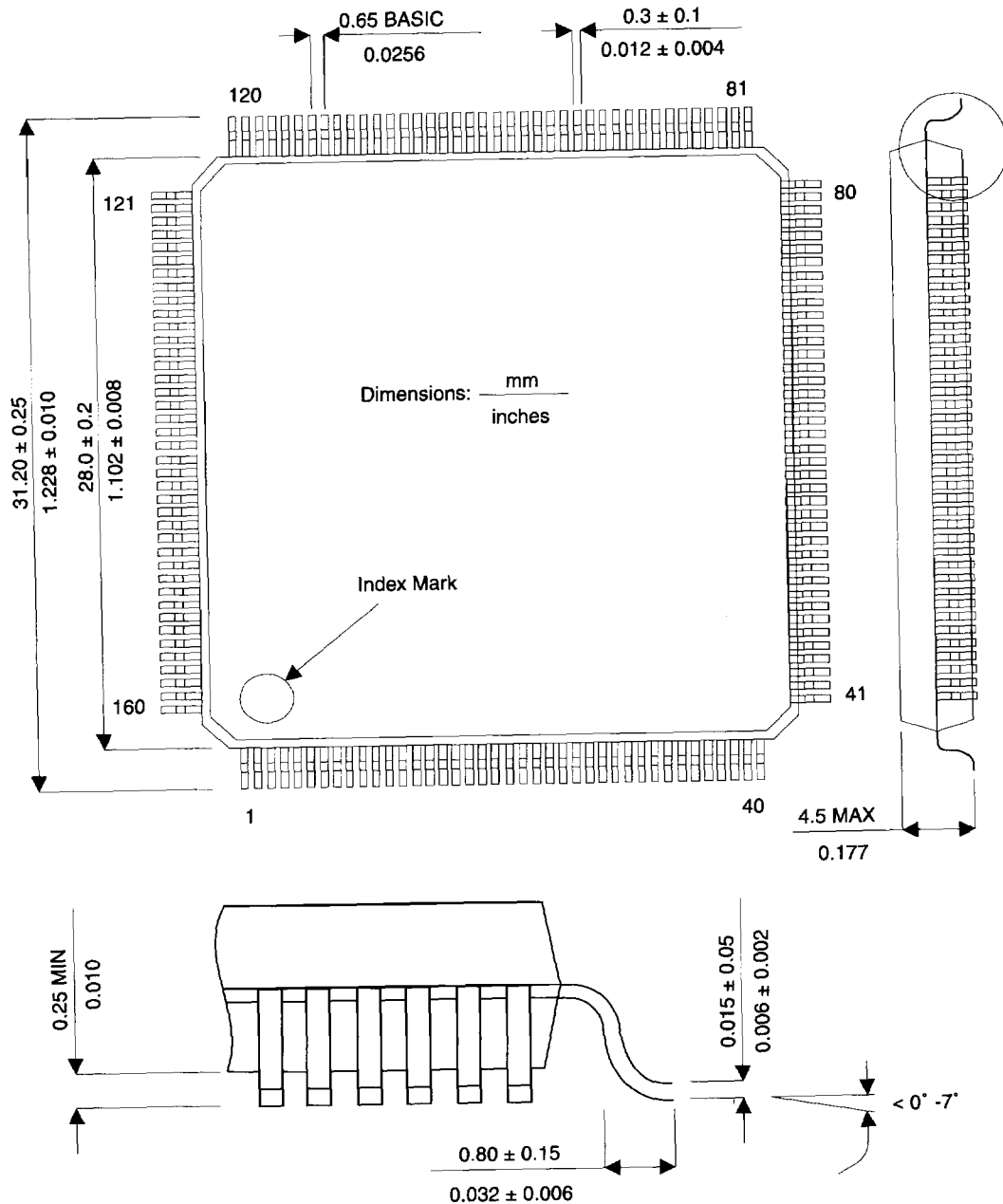
Signal Name	Pin	I/O Type	Function
V <sub>DD</sub>	20		Power. All power pins must be connected to 3.3V supply.
	21		Power. All power pins must be connected to 3.3V supply.
	40		Power. All power pins must be connected to 3.3V supply.
	49		Power. All power pins must be connected to 3.3V supply.
	61		Power. All power pins must be connected to 3.3V supply.
	69		Power. All power pins must be connected to 3.3V supply.
	80		Power. All power pins must be connected to 3.3V supply.
	89		Power. All power pins must be connected to 3.3V supply.
	100		Power. All power pins must be connected to 3.3V supply.
	120		Power. All power pins must be connected to 3.3V supply.
	129		Power. All power pins must be connected to 3.3V supply.
	140		Power. All power pins must be connected to 3.3V supply.
	149		Power. All power pins must be connected to 3.3V supply.
	160		Power. All power pins must be connected to 3.3V supply.
WBE0 / A4	122	O/I	Write Byte Enable 0 / Address Bus Bit 4. When the 403GA is bus master, the write byte enable outputs, WBE0:3, select the active byte(s) in a memory write access. For 8-bit memory regions, WBE2 and WBE3 become address bits 30 and 31 and WBE0 is the write-enable line. For 16-bit memory regions, WBE2 and WBE3 become address bits 30 and 31 and WBE0 and WBE1 are the high byte and low byte write enables, respectively. For 32-bit memory regions, WBE0:3 are write byte enables for bytes 0-3 on the data bus, respectively. When the 403GA is not bus master, WBE0:1 are used as the A4:5 inputs (for bank register selection) and WBE2:3 are used as the A30:31 inputs (for byte selection and page crossing detection).
WBE1 / A5	123	O/I	Write Byte Enable 1 / Address Bus Bit 5. See description of WBE0 / A4 above.
WBE2 / A30	124	O/I	Write Byte Enable 2 / Address Bus Bit 30. See description of WBE0 / A4 above
WBE3 / A31	125	O/I	Write Byte Enable 3 / Address Bus Bit 31. See description of WBE0 / A4 above
XmitD	87	O	Serial port transmit data



Table 5. Signals Ordered by Pin Number

Pin	Signal Names	Pin	Signal Names	Pin	Signal Names	Pin	Signal Names	Pin	Signal Names
1	GND	33	INT2	65	D18	97	A11	129	V <sub>DD</sub>
2	DMAR0	34	INT3	66	D19	98	A12	130	GND
3	DMAR1	35	INT4	67	D20	99	A13	131	EOT1/TC1
4	DMAR2	36	CINT	68	D21	100	V <sub>DD</sub>	132	EOT2/TC2
5	DMAR3 / XREQ	37	TestC/HoldPri	69	V <sub>DD</sub>	101	GND	133	EOT3/TC3/XSize0
6	TCK	38	TestD	70	GND	102	GND	134	HoldAck
7	TMS	39	IVR	71	D22	103	A14	135	BusReq/ DMADXFER
8	TDI	40	V <sub>DD</sub>	72	D23	104	A15	136	Error
9	Halt	41	GND	73	D24	105	A16	137	DRAMOE
10	GND	42	D0	74	D25	106	A17	138	DRAMWE
11	BootW	43	D1	75	D26	107	A18	139	AMuxCAS
12	BusError	44	D2	76	D27	108	A19	140	V <sub>DD</sub>
13	Ready	45	D3	77	D28	109	A20	141	GND
14	HoldReq	46	D4	78	D29	110	A21	142	CAS0
15	GND	47	D5	79	D30	111	GND	143	CAS1
16	TDO	48	D6	80	V <sub>DD</sub>	112	A22	144	CAS2
17	TS0	49	V <sub>DD</sub>	81	GND	113	A23	145	CAS3
18	TS1	50	GND	82	D31	114	A24	146	CS7/RAS0
19	TS2	51	D7	83	TS6	115	A25	147	CS6/RAS1
20	V <sub>DD</sub>	52	D8	84	TS5	116	A26	148	CS5/RAS2
21	V <sub>DD</sub>	53	D9	85	TS4	117	A27	149	V <sub>DD</sub>
22	SysClk	54	D10	86	TS3	118	A28	150	GND
23	TestA	55	D11	87	XmitD	119	A29	151	CS4/RAS3
24	TestB	56	D12	88	DTR / RTS	120	V <sub>DD</sub>	152	CS3
25	TimerClk	57	D13	89	V <sub>DD</sub>	121	GND	153	CS2
26	SerClk	58	D14	90	GND	122	WBE0 / A4	154	CS1
27	RecvD	59	GND	91	Reset	123	WBE1 / A5	155	CS0
28	DSR / CTS	60	GND	92	A6	124	WBE2 / A30	156	DMAA0
29	GND	61	V <sub>DD</sub>	93	A7	125	WBE3 / A31	157	DMAA1
30	GND	62	D15	94	A8	126	OE / XSize1	158	DMAA2
31	INT0	63	D16	95	A9	127	R/W	159	DMAA3 / XACK
32	INT1	64	D17	96	A10	128	EOT0/TC0	160	V <sub>DD</sub>

PQFP Mechanical Drawing (Top View)



Note: English dimensions are for reference only.

## Package Thermal Specifications

The 403GA is designed to operate within the case temperature range from 0°C to 120°C. Thermal resistance values for the 160 PQFP are shown in Table 6.

Table 6. Thermal Resistance (°C/Watt)

Parameter	Airflow-ft/min (m/sec)		
	0 (0)	100 (0.51)	200 (1.02)
$\theta_{JC}$ Junction to case	2	2	2
$\theta_{CA}$ Case to ambient (without heatsink)	37.2	31.6	29.8

### Notes:

1. Case temperature  $T_{mC}$  is measured at top center of case surface with device soldered to circuit board.
2.  $T_{mA} = T_{mC} - P \times \theta_{CA}$ , where  $T_{mA}$  is ambient temperature.
3.  $T_{mCMax} = T_{mJMax} - P \times \theta_{JC}$ , where  $T_{mJMax}$  is maximum junction temperature and P is power consumption.
4. The above assumes that the chip is mounted on a card with at least one signal and two power planes.

## ELECTRICAL SPECIFICATIONS

### Absolute Maximum Ratings

The absolute maximum ratings in Table 7 below are stress ratings only. Operation at or beyond these maximum ratings may cause permanent damage to the device.

Table 7. 403GA Maximum Ratings

Parameter	Maximum Rating
Supply voltage with respect to GND	-0.5V to +3.8V
Voltage on other pins with respect to GND	-0.5V to +5.5V
Case temperature under bias	0°C to +120°C
Storage temperature	0°C to +150°C

## Operating Conditions

The 403GA can interface to either 3V or 5V technologies. The range for supply voltages is specified for five-percent margins relative to a nominal 3.3V power supply.

Device operation beyond the conditions specified in Table 8 is not recommended. Extended operation beyond the recommended conditions may affect device reliability:

Table 8. Operating Conditions

Symbol	Parameter	Min	Max	Unit
$V_{DD}$	Supply voltage	3.14	3.47	V
$F_C$	Clock frequency:			
	403GA-JC25	0	25	MHz
	403GA-JC33	0	33	
$T_{mC}$	Case temperature under bias	0	85	°C

## Power Considerations

Power dissipation is determined by operating frequency, temperature, and supply voltage, as well as external source/sink current requirements. Typical power dissipation is 0.2 W at 25 MHz or 0.26 W at 33MHz,  $T_{mC} = 55^\circ\text{C}$ , and  $V_{CC} = 3.3\text{ V}$ , with an average 10pF capacitive load.

Estimated supply current as a function of frequency is shown in the figure, "Supply Current vs Operating Frequency," on page 28. Derating curves are provided in the section, "Output Derating for Capacitance and Voltage," on page 26.

## Recommended Connections

Power and ground pins should all be connected to separate power and ground planes in the circuit board to which the 403GA is mounted. Unused input pins must be tied inactive, either high or low.

The interface voltage reference (IVR) pin should be connected to 3.3V supply if all signal pins connecting to the 403GA pins operate at 3V levels. If any signal pin connecting to the 403GA operates with 5V levels, the IVR pin should be connected to 5V supply.

## DC Specifications

Table 9. 403GA DC Characteristics

Symbol	Parameter	Min	Max	Units
$V_{IL}$	Input low voltage (except for SysClk)	GND - 0.1	0.4	V
$V_{ILC}$	Input low voltage for SysClk	GND - 0.1	0.4	V
$V_{IH}$	Input high voltage (except for SysClk) <sup>1</sup>	2.4	$V_{IVR} + 0.1$	V
$V_{IHC}$	Input high voltage for SysClk <sup>1</sup>	2.4	$V_{IVR} + 0.1$	V
$V_{OL}$	Output low voltage		0.6	V
$V_{OH}$	Output high voltage	2.4	3.5	V
$I_{OH}$	Output high current		2	mA
$I_{OL}$	Output low current		4	mA
$I_{LI}$	Input leakage current		50	$\mu$ A
$I_{LO}$	Output leakage current		10	$\mu$ A
$I_{CC}$	Supply current ( $I_{CC\ Max}$ at $F_C$ of 25MHz) <sup>2</sup>		200	mA
	Supply current ( $I_{CC\ Max}$ at $F_C$ of 33MHz) <sup>2</sup>		260	mA

## Notes:

- $V_{IVR}$  is the interface voltage reference to which the IVR pin is tied to select either a 3.3V or 5V interface.
- $I_{CC\ Max}$  is measured at  $T_J = 85^\circ\text{C}$ , worst-case recommended operating conditions for frequency and voltage as specified in "Operating Conditions," on page 19, and a capacitive load of 50 pF.

Table 10. 403GA I/O Capacitance

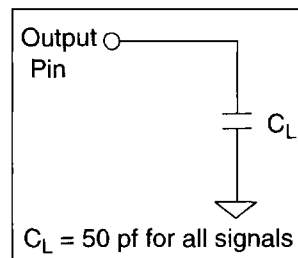
Symbol	Parameter	Min	Max	Units
$C_{IN}$	Input capacitance (except for SysClk)		5	pF
$C_{INC}$	Input capacitance for SysClk		25	pF
$C_{OUT}$	Output capacitance <sup>1</sup>		7	pF
$C_{I/O}$	I/O pin capacitance		8	pF

## Notes:

- $C_{Out}$  is specified as the load capacitance of a floating output in high impedance.

## AC Specifications

Clock timing and switching characteristics are specified in accordance with recommended operating conditions in Table 8. AC specifications are tested at  $V_{DD} = 3.14\text{V}$  and  $T_J = 85^\circ\text{C}$  with the 50pF test load shown in the figure at right. Derating of outputs for capacitive loading is shown in the figure "Output Derating for Capacitance and Voltage," on page 26.



## SysClk Timing Waveform

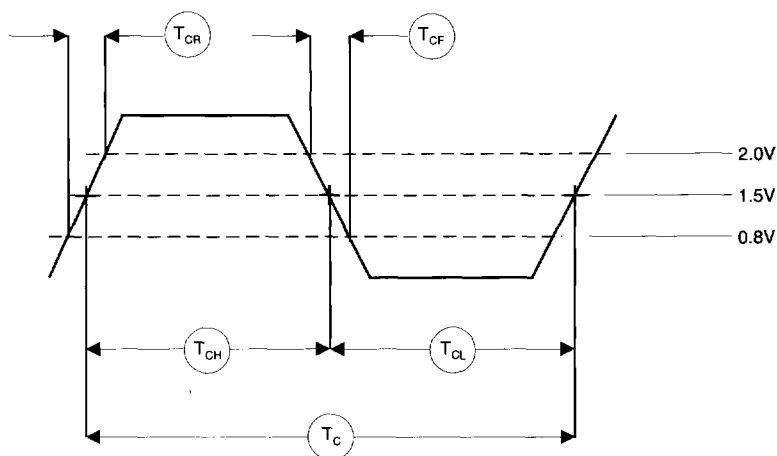


Table 11. 403GA System Clock Timing

Symbol	Parameter	25 MHz		33 MHz		Units
		Min	Max	Min	Max	
$F_C$	SysClk clock input frequency		25		33	MHz
$T_C$	SysClk clock period	40		30		ns
$T_{CS}$	Clock edge stability <sup>1</sup>		0.2		0.2	ns
$T_{CH}$	Clock input high time	16		13		ns
$T_{CL}$	Clock input low time	16		13		ns
$T_{CR}$	Clock input rise time <sup>2</sup>	0.5	2.5	0.5	2.5	ns
$T_{CF}$	Clock input fall time <sup>2</sup>	0.5	2.5	0.5	2.5	ns

**Notes:**

1. Cycle-to-cycle jitter allowed between any two edges.
2. Rise and fall times measured between 0.8V and 2.0V.

## Timer Clock and Serial Port Timing Characteristics

Table 12. 403GA Timer Clock and Serial Clock Timings

Symbol	Parameter	Min	Max	Units
$F_{SC}$	TimerClk, SerClk input frequency		$0.5 F_C$	MHz
$T_{SC}$	TimerClk, SerClk period	$2T_C$		ns
$T_{SCH}$	TimerClk, SerClk input high time	$1/F_C$		ns
$T_{SCL}$	TimerClk, SerClk input low time	$1/F_C$		ns

**Notes:**

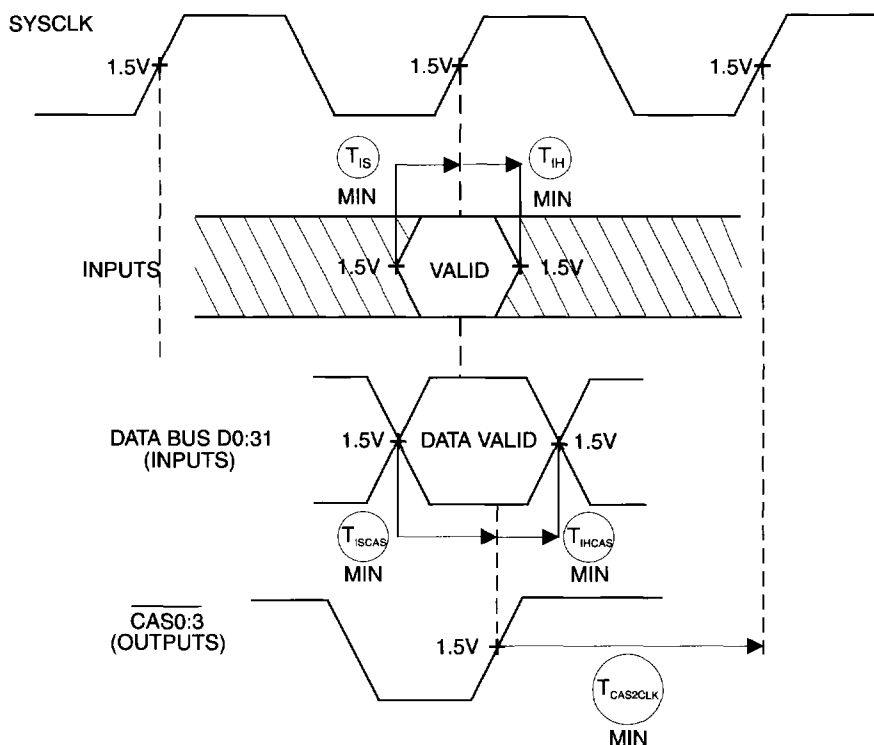
1. Maximum input frequency of TimerClk and SerClk must be less than or equal to half of SysClk input frequency.
2. TimerClk and SerClk input high times must be greater than or equal to SysClk period  $T_C$ .
3. TimerClk and SerClk input low times must be also greater than or equal to SysClk period  $T_C$ .

Table 13. 403GA Serial Port Output Timings

Symbol	Parameter	25 MHz		33 MHz		Units
		$T_{OHMin}$	$T_{OVMax}$	$T_{OHMin}$	$T_{OVMax}$	
$T_{OH}, T_{OV}$	Output hold, output valid time					
$T_{OH1}, T_{OV1}$	$\overline{DTR/RTS}$		14	13		ns
$T_{OH2}, T_{OV2}$	$\overline{XmitD}$		12	11		

**Note:**

- Output times are measured with a standard 50 pF capacitive load, unless otherwise noted.

**Input Setup and Hold Waveform****Notes:**

- The 403GA may be programmed to latch data from the data bus either on the rise of SysClk or the rise of  $\overline{CAS}$ . When the 403GA is programmed to latch data on  $\overline{CAS}$ , bit 26 of the I/O control register (IOCR) is set to 1.
- $T_{CAS2CLK} \geq 15.5$  ns. The capacitive load on the  $\overline{CAS}$  outputs must not delay the  $\overline{CAS}$  low-to-high transition such that the period from the  $\overline{CAS}$  rising edge to the next SysClk rising edge becomes less than 15.5 ns. The maximum value of  $\overline{CAS}$  capacitive loading can be determined by using the output time for  $\overline{CAS}$  from Table 16, "403GA Synchronous Output Timings," on page 25, and applying the appropriate derating factor for your application. See the figure, "Output Derating for Capacitance and Voltage," on page 26.

Table 14. 403GA Synchronous Input Timings

Symbol	Parameter	25 MHz		33 MHz		Units
		Min	Max	Min	Max	
$T_{IS}$	Input setup:					
$T_{IS1}$	A4:11,A22:31	4		3		
$T_{IS2}$	BusError	5		5		
$T_{IS3}$	D0:31 (to SysClk)	5		4		
$T_{ISCAS}$	D0:31 (to $\overline{CAS}$ )	2		2		
$T_{IS4}$	HoldPri	3		3		ns
$T_{IS5}$	HoldReq	4		3		
$T_{IS6}$	R/W	3		3		
$T_{IS7}$	Ready	6		5		
$T_{IS8}$	XReq	5		4		
$T_{IS9}$	XSize0:1	5		4		
$T_{IH}$	Input hold:					
$T_{IH1}$	A4:11,A22:31	2		2		
$T_{IH2}$	BusError	2		2		
$T_{IH3}$	D0:31 (after SysClk)	2		2		
$T_{IHCAS}$	D0:31 (after $\overline{CAS}$ )	3		3		
$T_{IH4}$	HoldPri	2		2		ns
$T_{IH5}$	HoldReq	2		2		
$T_{IH6}$	R/W	2		2		
$T_{IH7}$	Ready	2		2		
$T_{IH8}$	XReq	2		2		
$T_{IH9}$	XSize0:1	2		2		
$T_R, T_F$	Input rise/fall time	0.5	2.5	0.5	2.5	ns

**Note:**

1. Data bus setup and hold times for DRAM  $\overline{CAS}$  mode are measured relative to  $\overline{CAS}$  deactivation.

Table 15. 403GA Asynchronous Input Timings

Symbol	Parameter	25 MHz		33 MHz		Units
		Min	Max	Min	Max	
$T_{IS}$	Input setup time					
$T_{IS10}$	$\overline{CINT}$	5		3		
$T_{IS11}$	$\overline{DMAR0:3}$	3		3		
$T_{IS12}$	$\overline{EOT0:3}$	3		3		ns
$T_{IS13}$	$\overline{HALT}$	3		3		
$T_{IS14}$	$\overline{INT0:4}$	6		5		
$T_{IS15}$	Reset	8		8		

Table 15. 403GA Asynchronous Input Timings

Symbol	Parameter	25 MHz		33 MHz		Units
		Min	Max	Min	Max	
$T_{IH}$	Input hold time					
$T_{IH10}$	$\overline{CINT}$	$T_C$		$T_C$		ns
$T_{IH11}$	$\overline{DMAR0:3}$	$T_C$		$T_C$		
$T_{IH12}$	$\overline{EOT0:3}$	$T_C$		$T_C$		
$T_{IH13}$	$\overline{HALT}$	$T_C$		$T_C$		
$T_{IH14}$	$\overline{INT0:4}$	$T_C$		$T_C$		
$T_{IH15}$	$\overline{Reset}$	Note 1, 2		Note 1, 2		

**Notes:**

1. During a system-initiated reset,  $\overline{Reset}$  must be taken low for a minimum of eight SysClk cycles.
2. The BootW input has a maximum rise time requirement of 10 ns when it is tied to Reset.
3. Input hold times are measured at 3.47V and  $T_J = 10^\circ\text{C}$ .

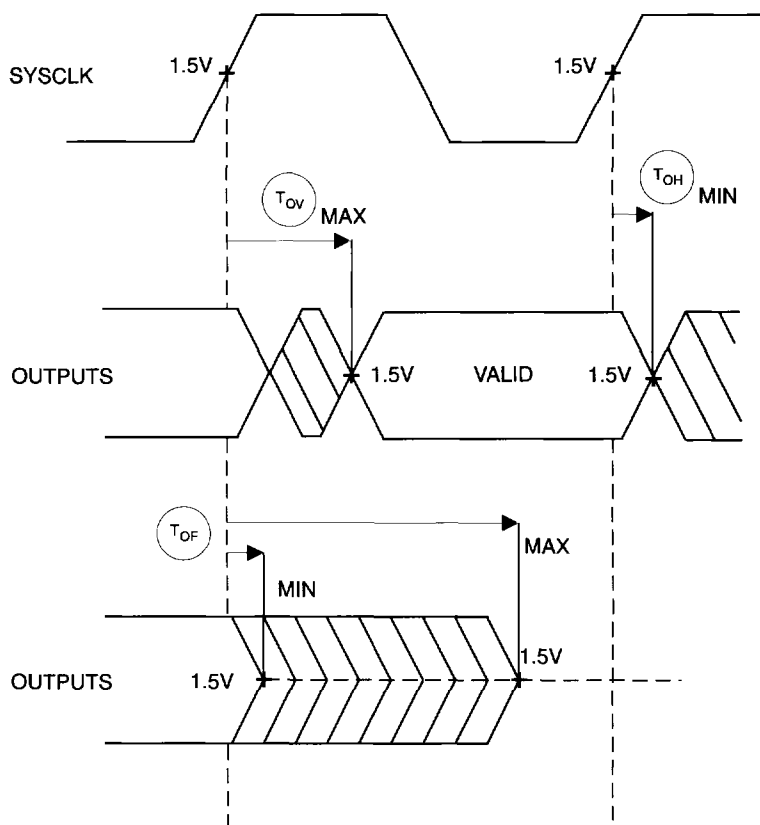
**Output Delay and Float Timing Waveform**



Table 16. 403GA Synchronous Output Timings

Symbol	Parameter		25 MHz		33 MHz		Units
			T <sub>OHMin</sub>	T <sub>OVMax</sub>	T <sub>OHMin</sub>	T <sub>OVMax</sub>	
T <sub>OH</sub> , T <sub>OV</sub>	Output hold, output valid time						
	T <sub>OH1</sub> , T <sub>OV1</sub>	A6:31	4	15	4	13	
	T <sub>OH2</sub> , T <sub>OV2</sub>	AMuxCAS	3	11	3	11	
	T <sub>OH3</sub> , T <sub>OV3</sub>	BusReq	3	12	3	11	
	T <sub>OH4</sub> , T <sub>OV4</sub>	CAS0:3	4	13	4	12	
	T <sub>OH5</sub> , T <sub>OV5</sub>	CS0:7	2	13	2	11	
	T <sub>OH6</sub> , T <sub>OV6</sub>	D0:31	4	16	4	15	
	T <sub>OH7</sub> , T <sub>OV7</sub>	DMAA0:3	3	11	3	10	
	T <sub>OH8</sub> , T <sub>OV8</sub>	DMADXFER	3	13	3	11	
	T <sub>OH9</sub> , T <sub>OV9</sub>	DRAMOE	3	11	3	11	
	T <sub>OH10</sub> , T <sub>OV10</sub>	DRAMWE	2	10	3	10	ns
	T <sub>OH11</sub> , T <sub>OV11</sub>	Error	4	14	4	12	
	T <sub>OH12</sub> , T <sub>OV12</sub>	HoldAck	3	12	3	11	
	T <sub>OH13</sub> , T <sub>OV13</sub>	OE	3	11	3	10	
	T <sub>OH14</sub> , T <sub>OV14</sub>	RAS0:3	3	12	3	11	
	T <sub>OH15</sub> , T <sub>OV15</sub>	RAS0:3 (Early) <sup>1</sup>	12	22	11	20	
	T <sub>OH16</sub> , T <sub>OV16</sub>	Reset	3	14	3	12	
	T <sub>OH17</sub> , T <sub>OV17</sub>	R/W	3	11	3	10	
	T <sub>OH18</sub> , T <sub>OV18</sub>	TC0:3	3	13	3	12	
	T <sub>OH19</sub> , T <sub>OV19</sub>	TS0:6	4	30	4	25	
	T <sub>OH20</sub> , T <sub>OV20</sub>	WBE0:3	3	12	3	11	
T <sub>OH21</sub> , T <sub>OV21</sub>	XAck	3	13	3	12		
T <sub>OF</sub>	Output float time						
	T <sub>OF1</sub>	A6:31	2	10	2	9	
	T <sub>OF2</sub>	CS0:7	3	12	3	10	ns
	T <sub>OF3</sub>	D0:31	3	11	3	9	
	T <sub>OF4</sub>	OE	3	12	3	10	
	T <sub>OF5</sub>	Reset	2	8	2	7	
	T <sub>OF6</sub>	R/W	3	12	3	10	
	T <sub>OF7</sub>	WBE0:3	3	12	3	10	
T <sub>CAS</sub>	Available CAS access time		Min	Max	Min	Max	
	2-1-1 access mode	See Note 1	0.5T <sub>C</sub> - 2.5		0.5T <sub>C</sub> - 2.5		ns
	3-2-2 access mode	See Note 1	1.5T <sub>C</sub> - 2.5		1.5T <sub>C</sub> - 2.5		

**Notes:**

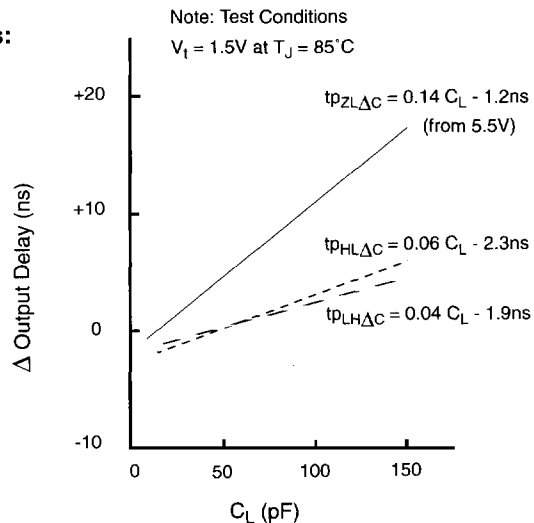
- For normal  $\overline{RAS}$  and  $\overline{CAS}$  timing,  $T_{OH}$  is relative to the rising edge of SysClk and  $T_{OV}$  is relative to the falling edge of SysClk. In early  $\overline{RAS}$  mode,  $T_{OV}$  is relative to the rising edge of SysClk.  $\overline{CAS}$  access time assumes a SysClk 50% duty cycle.
- In early  $\overline{RAS}$  mode, the  $\overline{RAS}$  output delay varies with the 403GA operating frequency. Use the following equation to determine the worst-case output delay for this signal:  $T_{OVMax} = 12 \text{ ns} + T_c/4$ ;  $T_{OHMin}$  remains unchanged. Valid for  $T_c$  greater than 30 ns and less than 80 ns.
- When initiating a system reset, the 403GA pulls the  $\overline{Reset}$  output low and samples to determine when  $\overline{Reset}$  has gone low. Three cycles after  $\overline{Reset}$  has been sampled as low, the 403GA stops driving the  $\overline{Reset}$  output. At this time the system must hold  $\overline{Reset}$  low for five more cycles.
- Output times are measured with a standard 50 pF capacitive load, unless otherwise noted. Output hold times are measured at 3.47V and  $T_j = 10^\circ\text{C}$ .

## Output Derating for Capacitance and Voltage

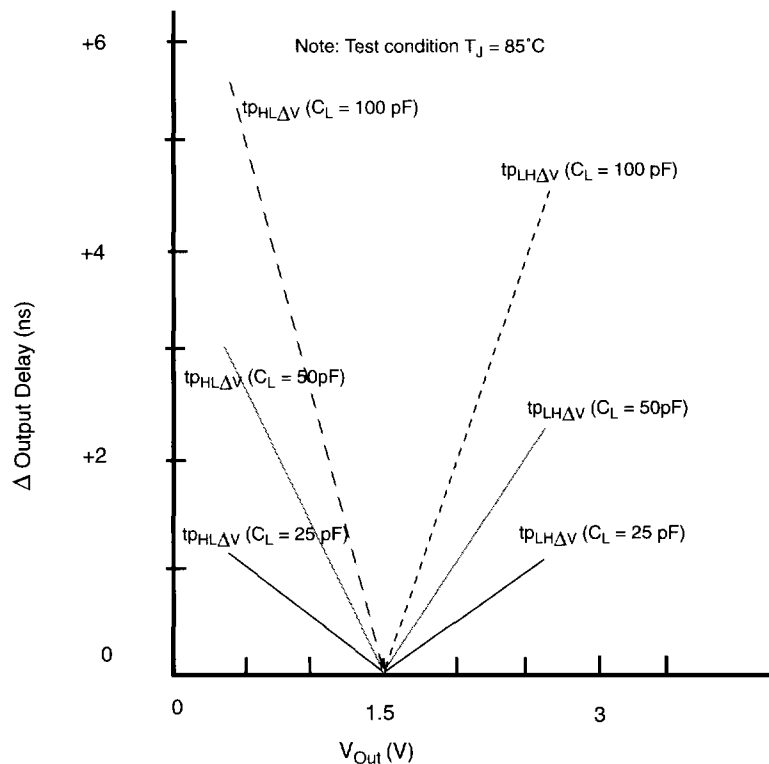
### Output Propagation Delay Derating

#### Derating Equations for Output Delays:

1.  $\Delta tp_{LH}(C_L, V) = tp_{LH\Delta C} + tp_{LH\Delta V}$
2.  $\Delta tp_{HL}(C_L, V) = tp_{HL\Delta C} + tp_{HL\Delta V}$
3.  $\Delta tp_{ZL5V}(C_L, V) = tp_{ZL\Delta C} + tp_{HL\Delta V}$



### Output Propagation Delay Derating vs Output Voltage Level

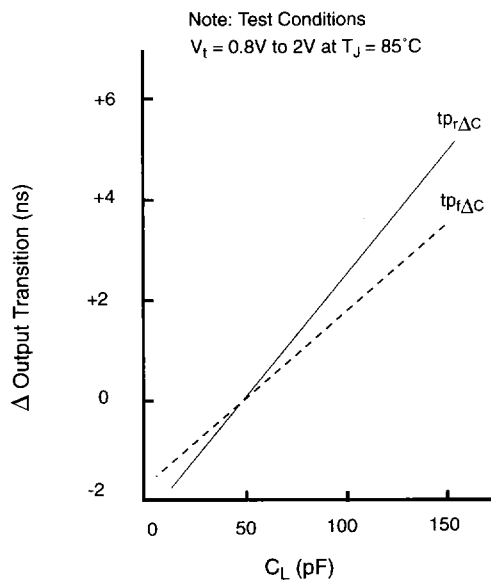


## Output Rise and Fall Time Derating

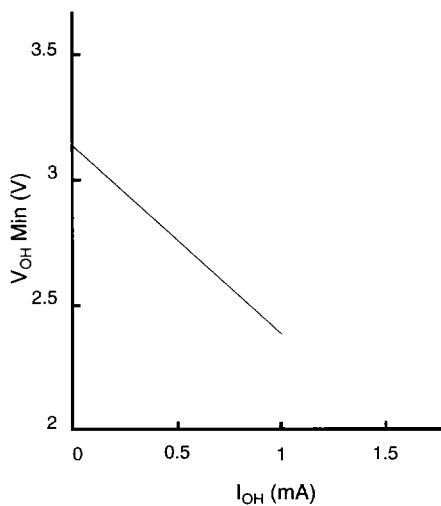
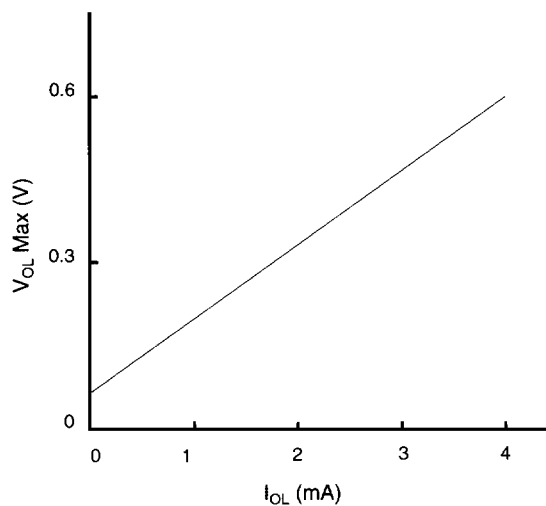
### Derating Equations for Output Rise and Fall Times:

4.  $t_R(C_L) = 2\text{ns} + t_{pR\Delta C}$
5.  $t_F(C_L) = 2.5\text{ns} + t_{pF\Delta C}$

## Output Transition Time Derating

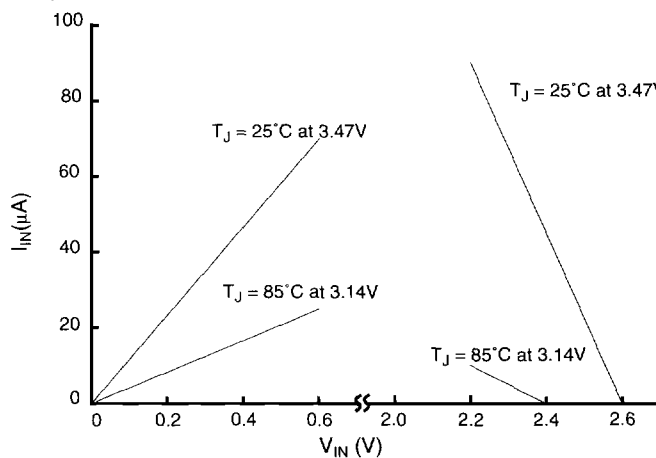


## Output Voltage vs Output Current



Note: Test conditions 3.14V at  $T_J = 85^\circ\text{C}$

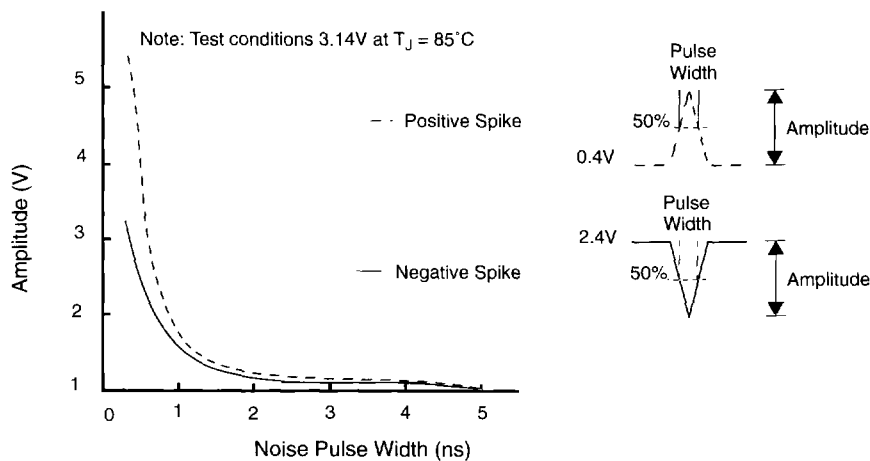
## Receiver Input Voltage vs DC Input Current



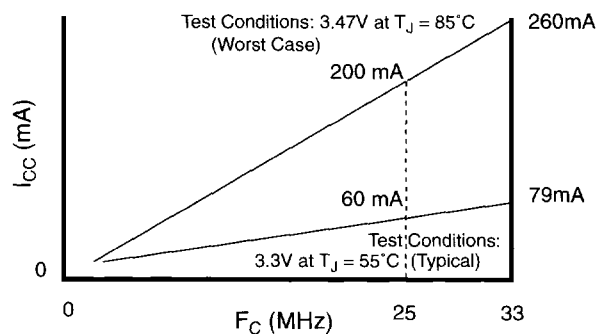
### Note:

1. Applies to receivers for asynchronous inputs on pins 2-9, 11, 13, 23, 25-28, 31-38, and 91, and synchronous inputs on pins 5, 12, and 14.

## Receiver Noise Sensitivity



## Supply Current vs Operating Frequency



## Reset and HoldAck

The following table summarizes the states of signals on output pins when  $\overline{\text{Reset}}$  or HoldAck is active.

Table 17. Signal States During Reset or Hold Acknowledge

Signal Names	State When $\overline{\text{Reset}}$ Active	State When HoldAck Active
A6:29	Floating	Floating (set to input mode)
AMuxCAS	Inactive (low)	Operable (see note 1)
$\overline{\text{BusReq}}$	Inactive (low)	Operable (see note 1)
CAS0:3	Inactive (high)	Operable (see note 1)
$\overline{\text{CS0:3}}$	Floating	Floating
CS4:7/RAS3:0	Floating	$\overline{\text{CS}}$ floating, $\overline{\text{RAS}}$ operable (see note 1)
D0:31	Floating	Floating (external master drives bus)
$\overline{\text{DMAA0:2}}$	Inactive (high)	Inactive (high)
$\overline{\text{DMAA3/XAck}}$	Inactive (high)	Operable (see note 1)
$\overline{\text{DRAMOE}}$	Inactive (high)	Operable (see note 1)
$\overline{\text{DRAMWE}}$	Inactive (high)	Operable (see note 1)
$\overline{\text{DTR/RTS}}$	Inactive (high)	Operable (see note 1)
Error	Inactive (low)	Operable (see note 1)
HoldAck	Inactive (low)	Active
$\overline{\text{OE}}$	Floating	Floating (input for XSize1)
$\overline{\text{Reset}}$	Floating unless initiating system reset	Floating unless initiating system reset
$\overline{\text{R/W}}$	Floating	Floating (set to input)
TC0:2	Floating (set to input)	Inactive (high)
$\overline{\text{TC3}}$	Floating (set to input)	Operable (input for XSize0)
TDO	Inactive (high)	Operable (see note 1)
TS0:6	Inactive (low)	Operable (see note 1)
$\overline{\text{WBE0:3}}$	Floating	Operable (inputs for A4:5, A30:31)
XmitD	Inactive (high)	Operable (see note 1)

### Note:

- Signal may be active while HoldAck is asserted, depending on the operation being performed by the 403GA.

## BUS WAVEFORMS

The waveforms in this section represent external bus operations, including SRAM and DRAM accesses, DMA transfers, and external master operations.

### Write Byte Enable Encoding

The 403GA provides four write byte enable signals ( $\overline{\text{WBE0:3}}$ ) to support 8-, 16-, and 32-bit devices, as shown in Table 18. For an eight-bit memory region,  $\overline{\text{WBE2:3}}$  are encoded as A30:31 and  $\overline{\text{WBE0}}$  is the write-enable line. For a 16-bit region,  $\overline{\text{WBE0}}$  is the high-byte enable,  $\overline{\text{WBE1}}$  is the low-byte enable and  $\overline{\text{WBE2:3}}$  are encoded as A30:31. For a 32-bit region, address bits 8:29 select the word address and  $\overline{\text{WBE0:3}}$  select data bytes 0:3, respectively.

Table 18. Write Byte Enable Encoding

8-Bit Bus Width	Bytes	$\overline{\text{WBE0}} = \overline{\text{WE}}$	$\overline{\text{WBE1}} = 1$	$\overline{\text{WBE2}} = \text{A30}$	$\overline{\text{WBE3}} = \text{A31}$
	0	0	1	0	0
	1	0	1	0	1
	2	0	1	1	0
	3	0	1	1	1
16-Bit Bus Width	Bytes	$\overline{\text{WBE0}} = \overline{\text{BHE}}$	$\overline{\text{WBE1}} = \overline{\text{BLE}}$	$\overline{\text{WBE2}} = \text{A30}$	$\overline{\text{WBE3}} = \text{A31}$
	0:1	0	0	0	0
	2:3	0	0	1	0
	0	0	1	0	0
	1	1	0	0	1
	2	0	1	1	0
	3	1	0	1	1
32-Bit Bus Width	Bytes	$\overline{\text{WBE0}}$	$\overline{\text{WBE1}}$	$\overline{\text{WBE2}}$	$\overline{\text{WBE3}}$
	0:3	0	0	0	0
	0:1	0	0	1	1
	2:3	1	1	0	0
	0	0	1	1	1
	1	1	0	1	1
	2	1	1	0	1
	3	1	1	1	0

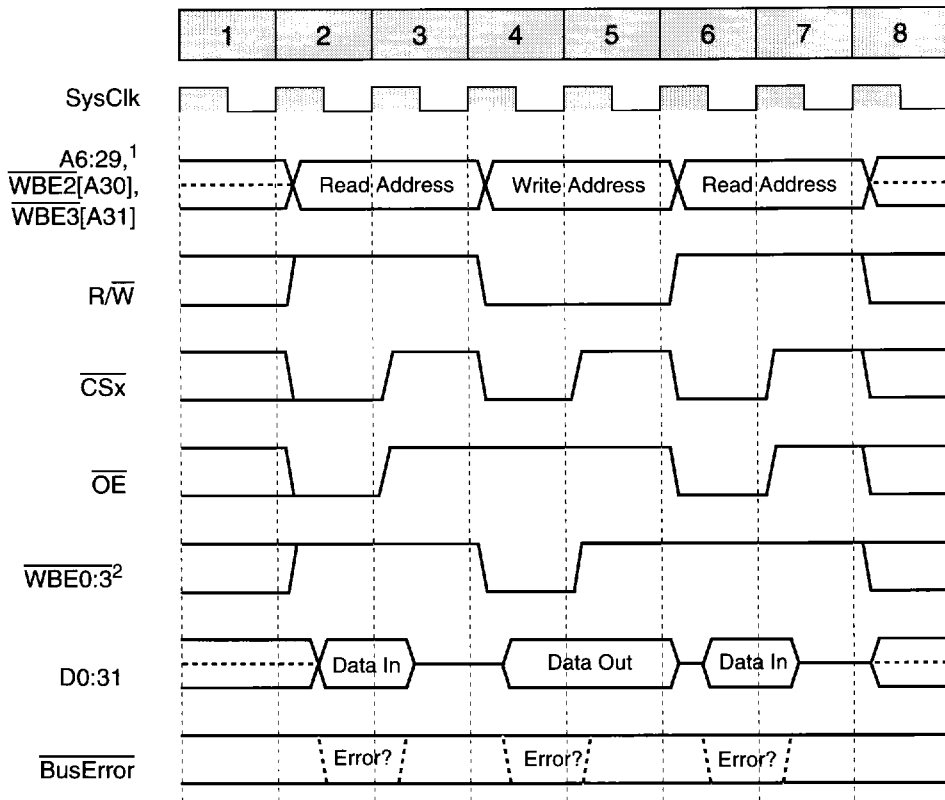
### Address Bus Multiplexing

To support memories and I/O devices with differing configurations and bus widths, the 403GA provides an internally multiplexed address bus controlled by the BIU. Table 19 shows the multiplexed address outputs referenced by waveforms later in this section.

Table 19. Multiplexed Address Outputs

Address Pins	A11	A12	A13	A14	A15	A16	A17	A18	A19	A20	A21	A22	A23	A24	A25	A26	A27	A28	A29
Addr Bits Out in RAS Cycle	a6	a7	a8	a9	a10	a11	a12	a13	a12	a13	a14	a15	a16	a17	a18	a19	a20	a21	a22
Addr Bits Out in CAS Cycle	xx	a6	a7	a8	a9	a10	a11	a12	a21	a22	a23	a24	a25	a26	a27	a28	a29	a30	a31

## SRAM Read-Write-Read with Zero Wait and One Hold



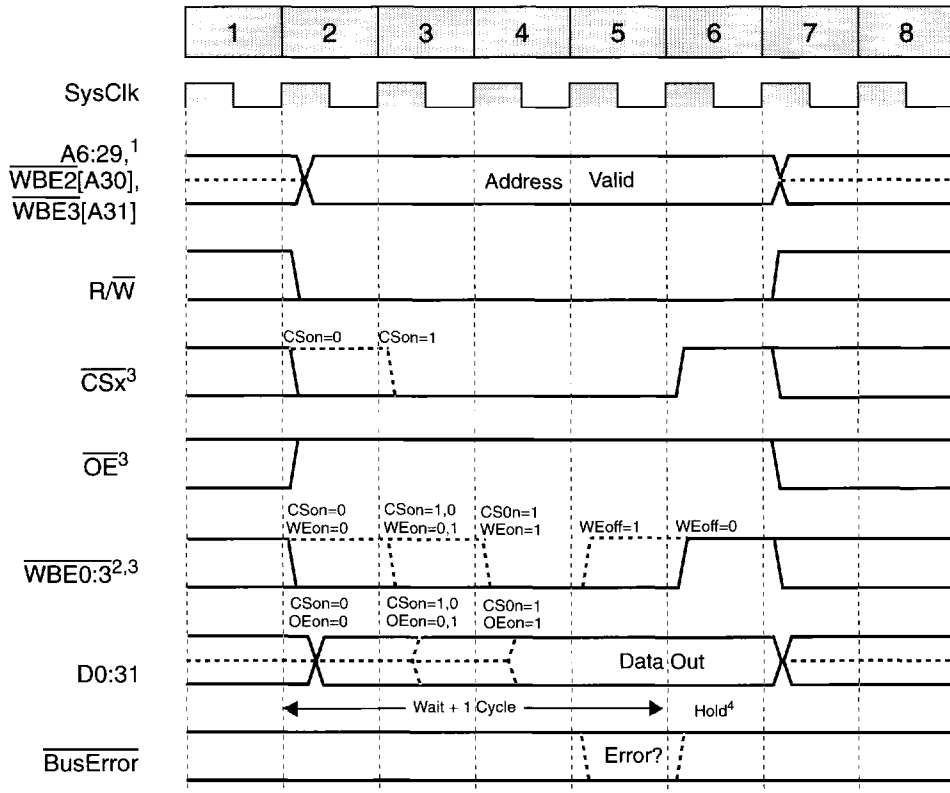
## Bank Register Bit Settings

SLF	Burst Mode	Bus Width	Ready Enable	Wait States	CSon	OEon	WEon	WEoff	Hold
Bit 13	Bit 14	Bits 15:16	Bit 17	Bits 18:23	Bit 24	Bit 25	Bit 26	Bit 27	Bits 28:30
0 or 1	0	xx	0	00 0000	0	0	0	0	001

## Notes:

1. WBE2:3 are address bits 30:31 if the bus width is programmed as byte or halfword.
2. See Table 18 for WBE signal definitions based on bus width.

# SRAM, ROM, or I/O Write Request with Wait and Hold



## Bank Register Bit Settings

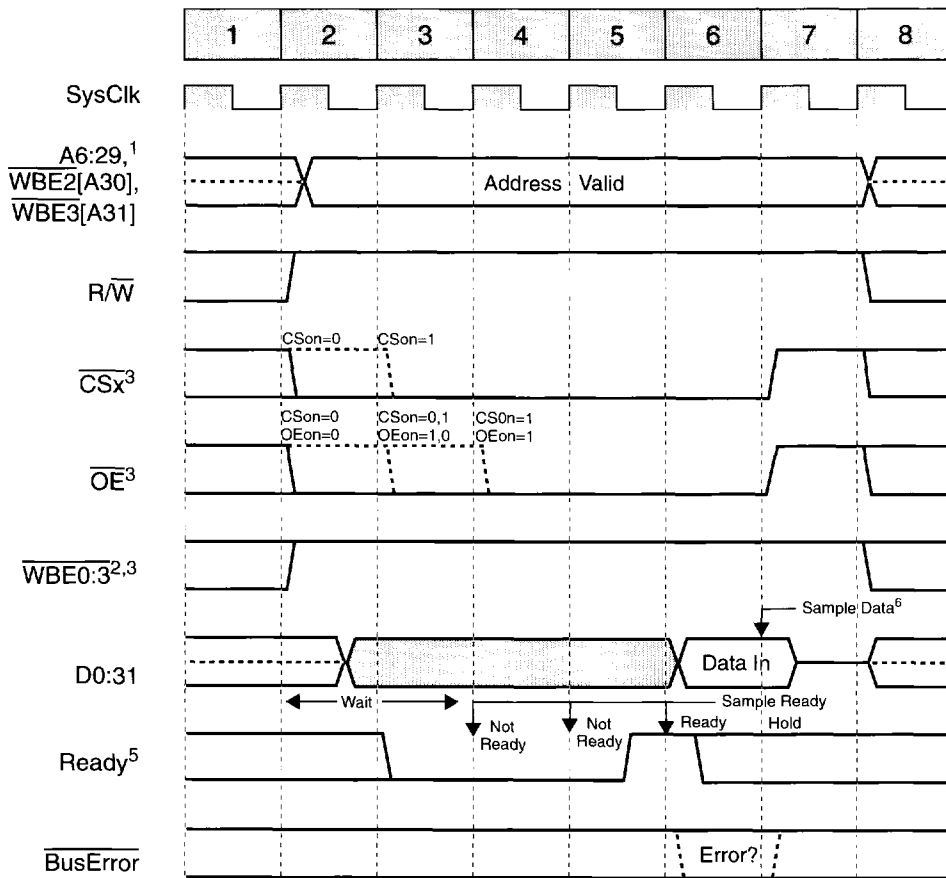
SLF	Burst Mode	Bus Width	Ready Enable	Wait States	CSon	OEon	WEon	WEoff	Hold
Bit 13	Bit 14	Bits 15:16	Bit 17	Bits 18:23	Bit 24	Bit 25	Bit 26	Bit 27	Bits 28:30
0 or 1	0	xx	0	00 0011	0 or 1	0 or 1	0 or 1	0 or 1	001

### Notes:

1. WBE2:3 are address bits 30:31 if the bus width is programmed as byte or halfword.
2. See Table 18 for WBE signal definitions based on bus width.
3. Wait must be programmed to a value  $\geq (CSon + WEon + WEoff)$  and  $\geq (CSon + OEon + WEoff)$ .  
If  $Wait > (CSon + WEon)$  and  $> (CSon + OEon)$ , then all signals retain the values shown in cycle 4 until the Wait time expires.
4. If Hold is programmed  $> 001$ , all signals retain the values shown in cycle 6 until the Hold timer expires.



## SRAM, ROM, or I/O Read Request, Wait Extended with Ready



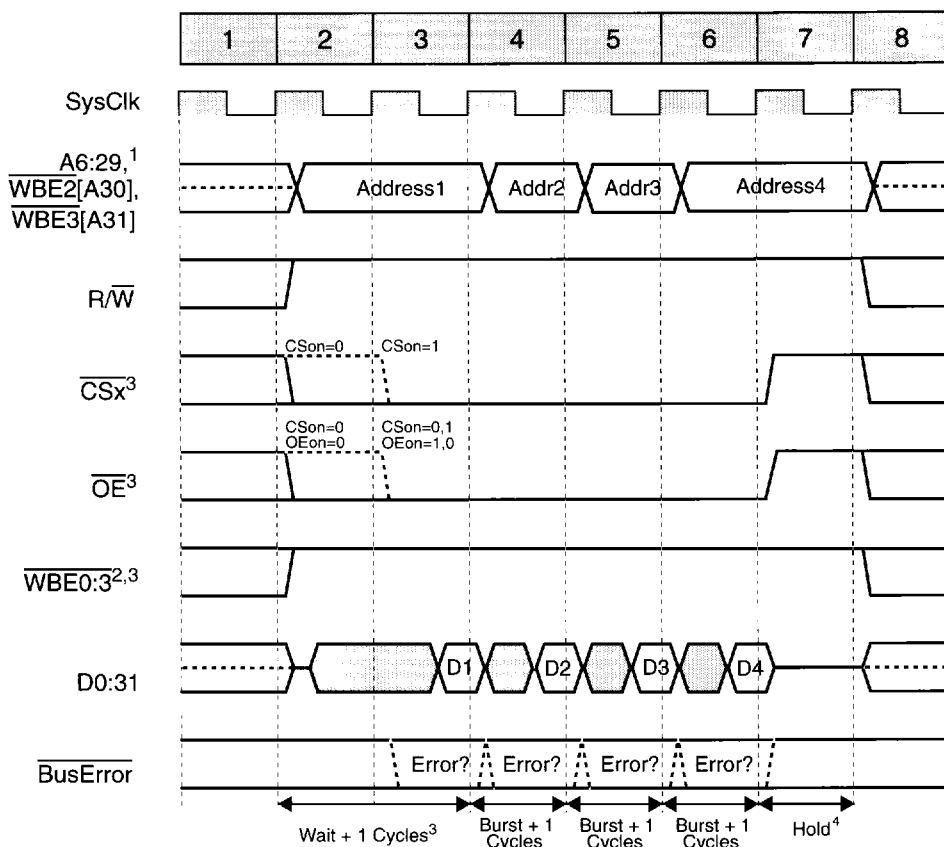
## Bank Register Bit Settings

SLF	Burst Mode	Bus Width	Ready Enable	Wait States	CSon	OEon	WEon	WEoff	Hold
Bit 13	Bit 14	Bits 15:16	Bit 17	Bits 18:23	Bit 24	Bit 25	Bit 26	Bit 27	Bits 28:30
0 or 1	0	xx	1	00 0010	0 or 1	0 or 1	0 or 1	x	001

## Notes:

1. WBE2:3 are address bits 30:31 if the bus width is programmed as byte or halfword.
2. See Table 18 for WBE signal definitions based on bus width.
3. Wait must be programmed to a value  $\geq (CSon + OEon)$ . If  $Wait > (CSon + OEon)$ , then all signals will retain the values shown in cycle 4 until the Wait timer expires.
4. If Hold is programmed  $> 001$ , all 403GA output signals retain the values shown in cycle 7 until the Hold timer expires.
5. If  $Wait = 00\ 0000$ , the Ready input is ignored and single-cycle transfers occur. If  $Wait = 00\ 0001$ , Ready is sampled starting in cycle 2. If  $Wait > 00\ 0001$ , Ready is sampled starting after the Wait cycles have expired.
6. Data is captured 1 cycle after Ready is sampled active.

# SRAM, ROM or I/O Burst Read with Wait and Hold



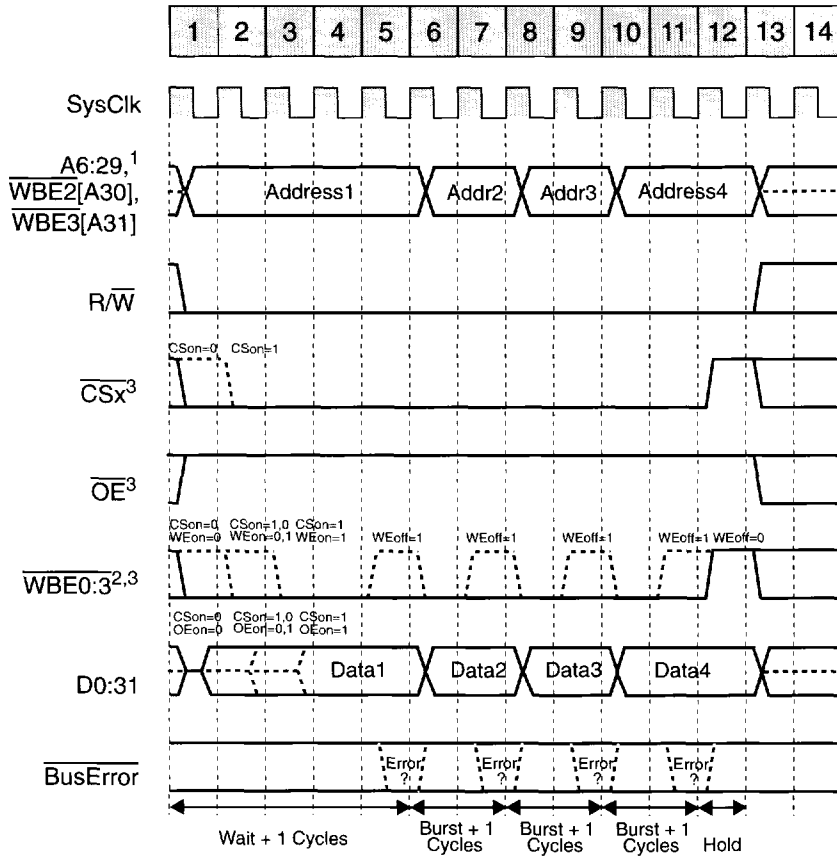
## Bank Register Bit Settings

SLF	Burst Mode	Bus Width	Ready Enable	Wait States	Burst Wait	CSon	OEon	WEon	WEoff	Hold
Bit 13	Bit 14	Bits 15:16	Bit 17	Bits 18:21	Bits 22:23	Bit 24	Bit 25	Bit 26	Bit 27	Bits 28:30
0 or 1	1	xx	0	0001	00	0 or 1	0 or 1	x	x	001

### Notes:

1. WBE2:3 are address bits 30:31 if the bus width is programmed as byte or halfword.
2. See Table 18 for WBE signal definitions based on bus width.
3. Wait must be programmed to a value  $\geq (CSon + OEon)$ . If  $Wait > (CSon + OEon)$ , then all signals will retain the values shown in cycle 3 until the Wait timer expires.
4. If Hold is programmed  $> 001$ , all 403GA output signals retain the values shown in cycle 7 until the Hold timer expires.

## SRAM, ROM or I/O Burst Write with Wait, Burst Wait, and Hold



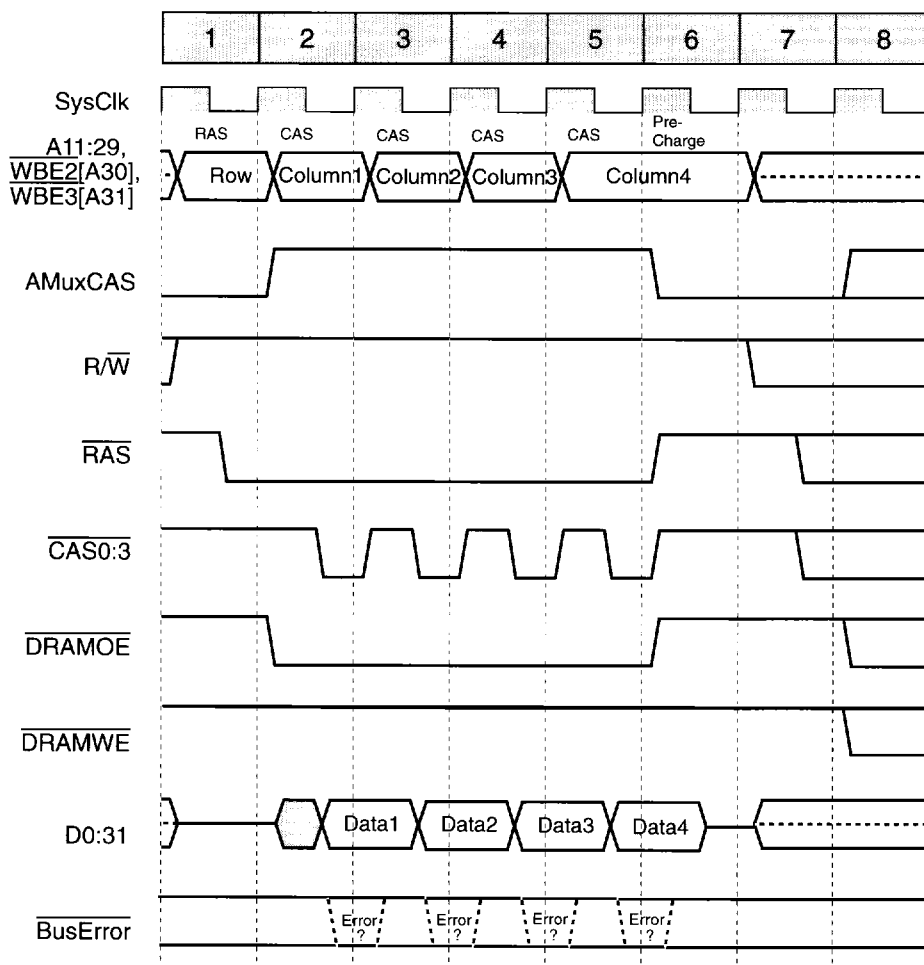
## Bank Register Bit Settings

SLF	Burst Mode	Bus Width	Ready Enable	Wait States	Burst Wait	CSon	OEon	WEon	WEoff	Hold
Bit 13	Bit 14	Bits 15:16	Bit 17	Bits 18:21	Bits 22:23	Bit 24	Bit 25	Bit 26	Bit 27	Bits 28:30
0 or 1	1	xx	0	0100	01	0 or 1	0 or 1	0 or 1	0 or 1	001

## Notes:

1. WBE2:3 are address bits 30:31 if the bus width is programmed as byte or halfword.
2. See Table 18 for WBE signal definitions based on bus width.
3. Wait must be programmed to a value  $\geq (CSon + WEon + WEoff)$  and  $\geq (CSon + OEon + WEoff)$ . If  $Wait > (CSon + WEon)$  and  $> (CSon + OEon)$ , then all signals retain the values shown in cycle 3 until the Wait timer expires.
4. If Hold is programmed  $> 001$ , all 403GA output signals retain the values shown in cycle 12 until the Hold timer expires.

## DRAM 2-1-1-1 Page Mode Read



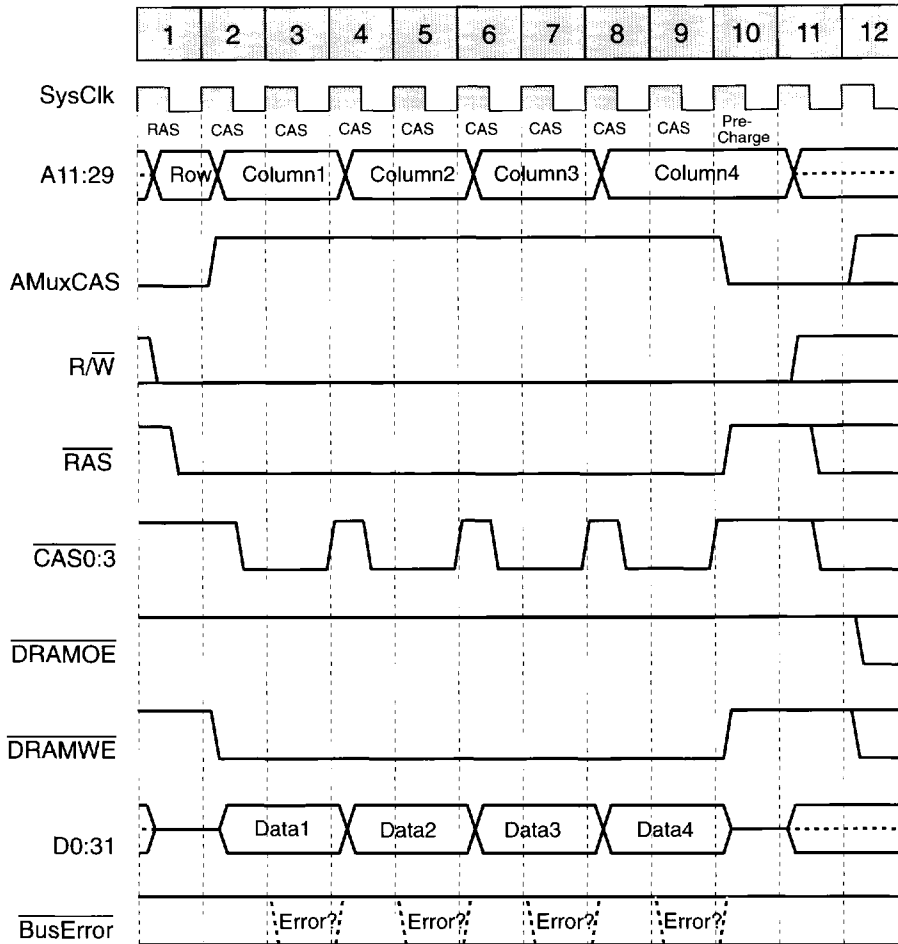
## Bank Register Bit Settings

SLF	ERM	Bus Width	Ext Mux	RAS-to-CAS	Refresh Mode	Page Mode	First Access	Burst Access	Prechg Cycles	Refresh RAS	Refresh Rate
Bit 13	Bit 14	Bits 15:16	Bit 17	Bit 18	Bit 19	Bit 20	Bits 21:22	Bits 23:24	Bit 25	Bit 26	Bits 27:30
0 or 1	0	xx	x	0	0	1	00	00	0	x	xxxx

## Notes:

- For burst access, the address represented by Columns 1:4 does not necessarily indicate that they are in incremental address order. Typically, burst access is target word first.
- If internal mux mode is used, address bits A11:29 represent address bits described in Table 19.
- During internal mux mode access, A6:10 retain their unmultiplied values.
- If external mux mode is used, A11:29 are unaffected and do not change between  $\overline{\text{CAS}}$  and  $\overline{\text{RAS}}$  cycles.
- If bus width is programmed as byte or half-word,  $\overline{\text{WBE2:3}}$  represent address bits A30:31 regardless of mux mode.
- $\overline{\text{WBE0:1}}$  are always ones during DRAM transfers.

### DRAM 3-2-2-2 Page Mode Write



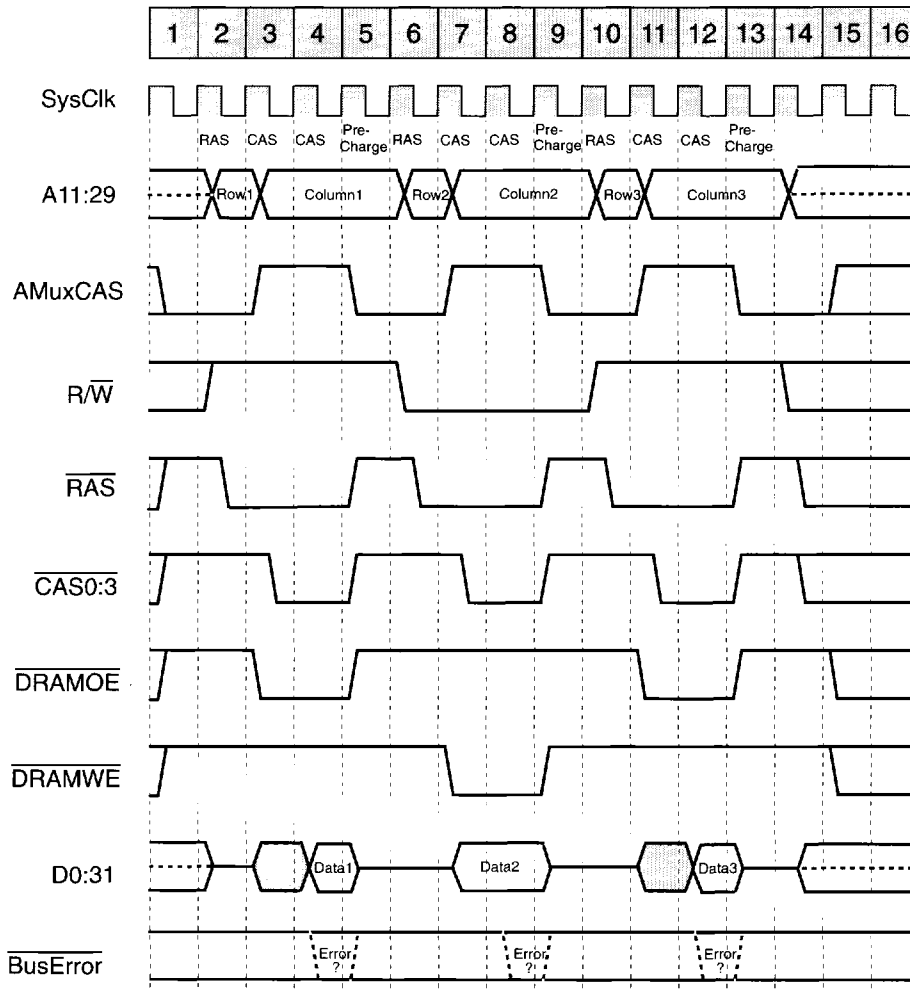
### Bank Register Bit Settings

SLF	ERM	Bus Width	Ext Mux	RAS-to-CAS	Refresh Mode	Page Mode	First Access	Burst Access	Prechg Cycles	Refresh RAS	Refresh Rate
Bit 13	Bit 14	Bits 15:16	Bit 17	Bit 18	Bit 19	Bit 20	Bits 21:22	Bits 23:24	Bit 25	Bit 26	Bits 27:30
0 or 1	0	xx	x	0	0	1	01	01	0	x	xxxx

#### Notes:

- For burst access, the addresses represented by Columns 1:4 do not necessarily indicate that they are in incremental address order. Typically, burst access is target word first.
- If internal mux mode is used, address bits A11:29 represent address bits described in Table 19.
- During internal mux mode access, A6:10 retain their unmultiplexed values.
- If external mux mode is used, A11:29 are unaffected and do not change between  $\overline{\text{CAS}}$  and  $\overline{\text{RAS}}$  cycles.
- If bus width is programmed as byte or half-word,  $\overline{\text{WBE2:3}}$  represent address bits A30:31 regardless of mux mode.
- $\overline{\text{WBE0:1}}$  are always ones during DRAM transfers.

## DRAM Read-Write-Read, One Wait

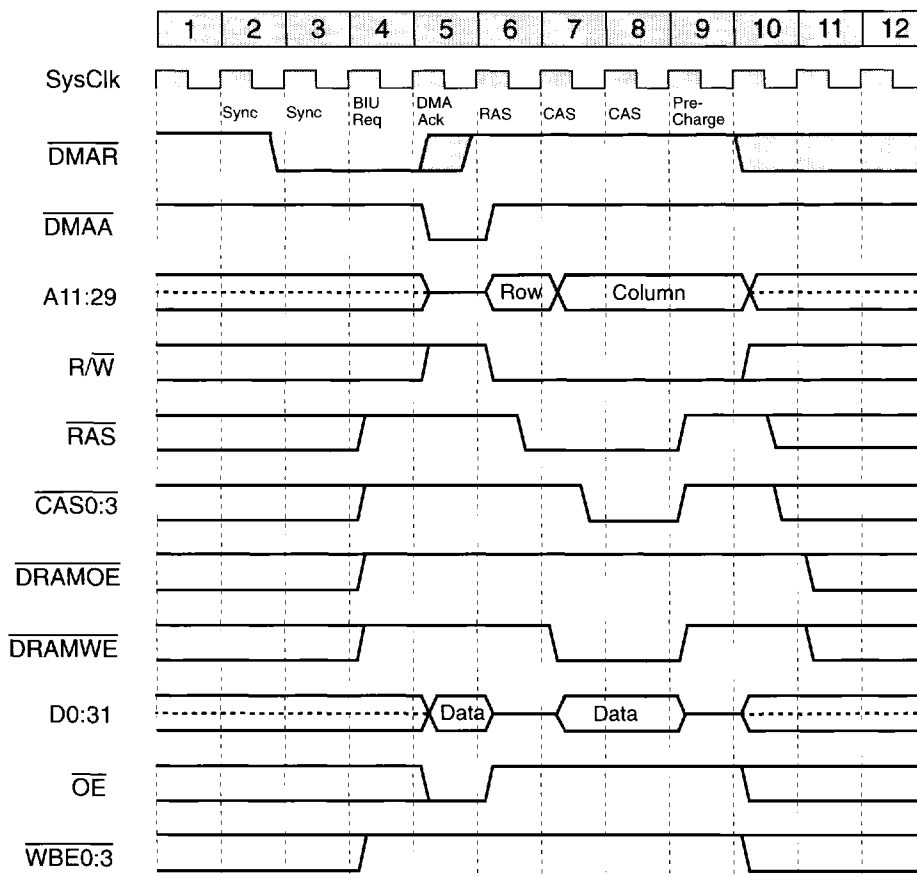


## Bank Register Bit Settings

SLF	ERM	Bus Width	Ext Mux	RAS-to-CAS	Refresh Mode	Page Mode	First Access	Burst Access	Prechg Cycles	Refresh RAS	Refresh Rate
Bit 13	Bit 14	Bits 15:16	Bit 17	Bit 18	Bit 19	Bit 20	Bits 21:22	Bits 23:24	Bit 25	Bit 26	Bits 27:30
0 or 1	0	xx	x	0	0	0	01	xx	0	x	xxxx

## Notes:

1. If internal mux mode is used, address bits A11:29 represent address bits described in Table 19.
2. During internal mux mode access, A6:10 retain their unmultiplexed values.
3. If external mux mode is used, A11:29 are unaffected and do not change between  $\overline{\text{CAS}}$  and  $\overline{\text{RAS}}$  cycles.
4. If bus width is programmed as byte or half-word,  $\overline{\text{WBE2:3}}$  represent address bits A30:31 regardless of mux mode.
5.  $\overline{\text{WBE0:1}}$  are always ones during DRAM transfers.

**DMA Buffered Single Transfer from Peripheral to 3-Cycle DRAM****Bank Register Bit Settings**

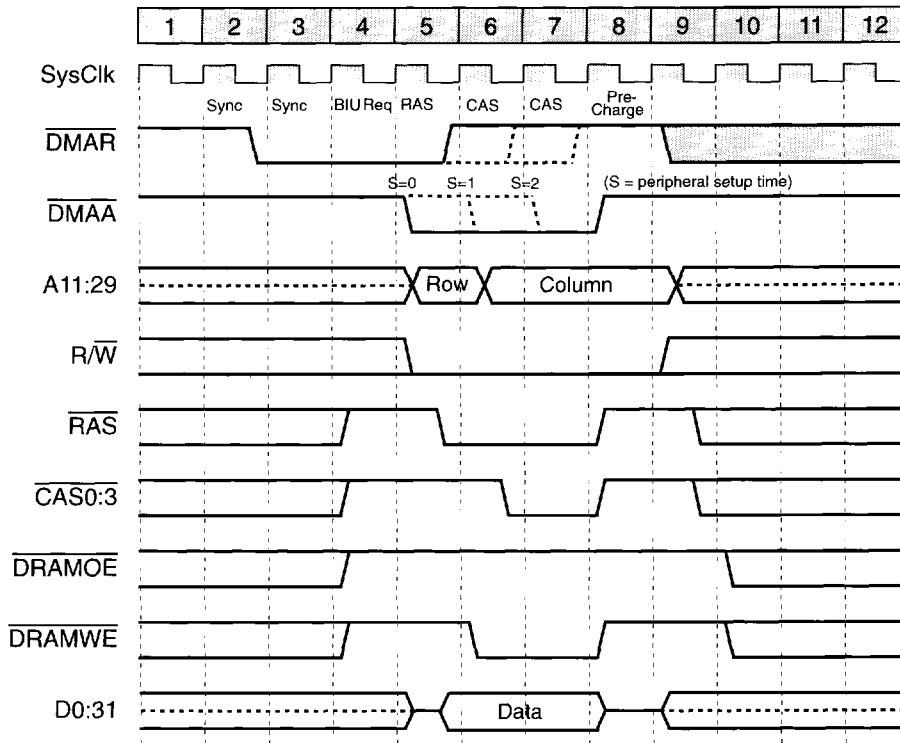
SLF	ERM	Bus Width	Ext Mux	RAS-to-CAS	Refresh Mode	Page Mode	First Access	Burst Access	Prechg Cycles	Refresh RAS	Refresh Rate
Bit 13	Bit 14	Bits 15:16	Bit 17	Bit 18	Bit 19	Bit 20	Bits 21:22	Bits 23:24	Bit 25	Bit 26	Bits 27:30
0 or 1	0	10	0	0	0	0	01	xx	0	x	xxxx

**DMA Control Register Bit Settings**

Transfer Direction	Transfer Width	Transfer Mode	Peripheral Setup	Peripheral Wait	Peripheral Hold
Bit 2	Bits 4:5	Bits 9:10	Bits 11:12	Bits 13:18	Bits 19:21
1	10	00	00	00 0000	000

**Notes:**

1. **DMAR** must be inactive in cycle 9 to guarantee a single transfer.
2. Peripheral data bus width must match DRAM bus width.
3. This waveform assumes that the internal address mux is used.
4. **CAS0** is used for byte accesses, **CAS0:1** for halfwords, and **CAS0:3** for fullwords.

**DMA Fly-By Single Transfer, Write to 3-Cycle DRAM****Bank Register Bit Settings**

SLF	ERM	Bus Width	Ext Mux	RAS-to-CAS	Refresh Mode	Page Mode	First Access	Burst Access	Prechg Cycles	Refresh RAS	Refresh Rate
Bit 13	Bit 14	Bits 15:16	Bit 17	Bit 18	Bit 19	Bit 20	Bits 21:22	Bits 23:24	Bit 25	Bit 26	Bits 27:30
0 or 1	0	10	0	0	0	0	01	xx	0	x	xxxx

**DMA Control Register Bit Settings**

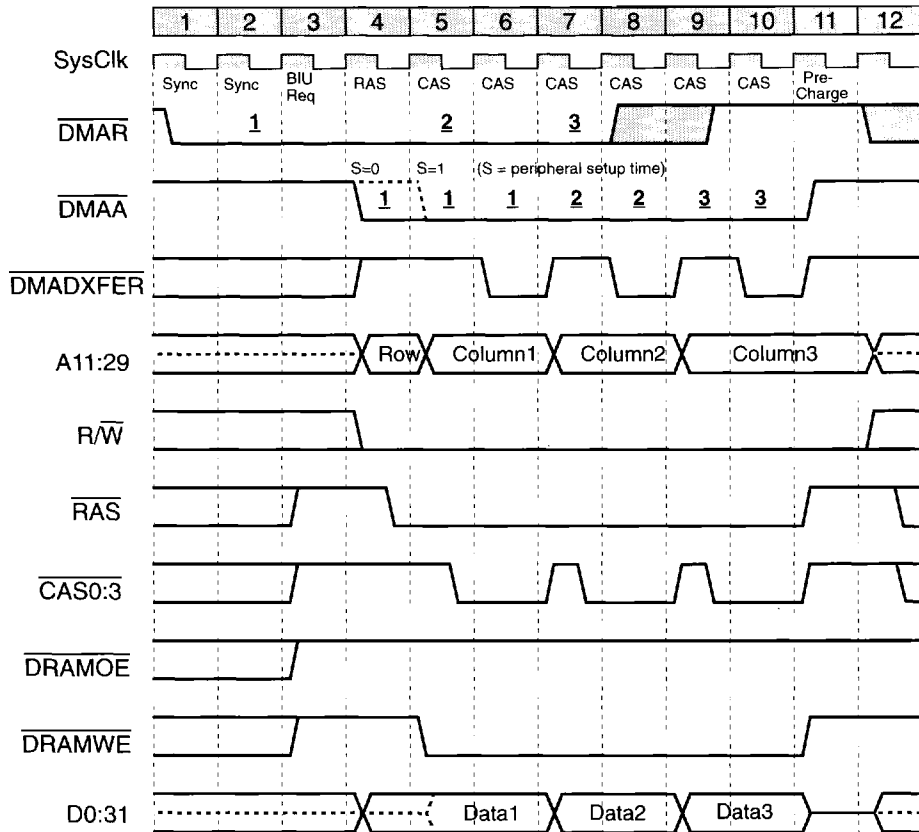
Transfer Direction	Transfer Width	Transfer Mode	Peripheral Setup	Peripheral Wait	Peripheral Hold
Bit 2	Bits 4:5	Bits 9:10	Bits 11:12	Bits 13:18	Bits 19:21
1	10	01	Note 3	xx xxxx	xxx

**Notes:**

1.  $\overline{\text{DMAR}}$  must be inactive in cycle 7 (last  $\overline{\text{DMAA}}$  cycle) to guarantee a single transfer.
2. Peripheral data bus width must match DRAM bus width.
3. See diagram for settings.
4. This waveform assumes that the internal address mux is used.
5.  $\text{CAS0}$  is used for byte accesses,  $\text{CAS0:1}$  for halfwords, and  $\text{CAS0:3}$  for fullwords.



## DMA Fly-By Continuous Burst to 3-Cycle DRAM



## Bank Register Bit Settings

SLF	ERM	Bus Width	Ext Mux	RAS-to-CAS	Refresh Mode	Page Mode	First Access	Burst Access	Prechg Cycles	Refresh RAS	Refresh Rate
Bit 13	Bit 14	Bits 15:16	Bit 17	Bit 18	Bit 19	Bit 20	Bits 21:22	Bits 23:24	Bit 25	Bit 26	Bits 27:30
0 or 1	0	10	0	0	0	1	01	01	0	x	xxxx

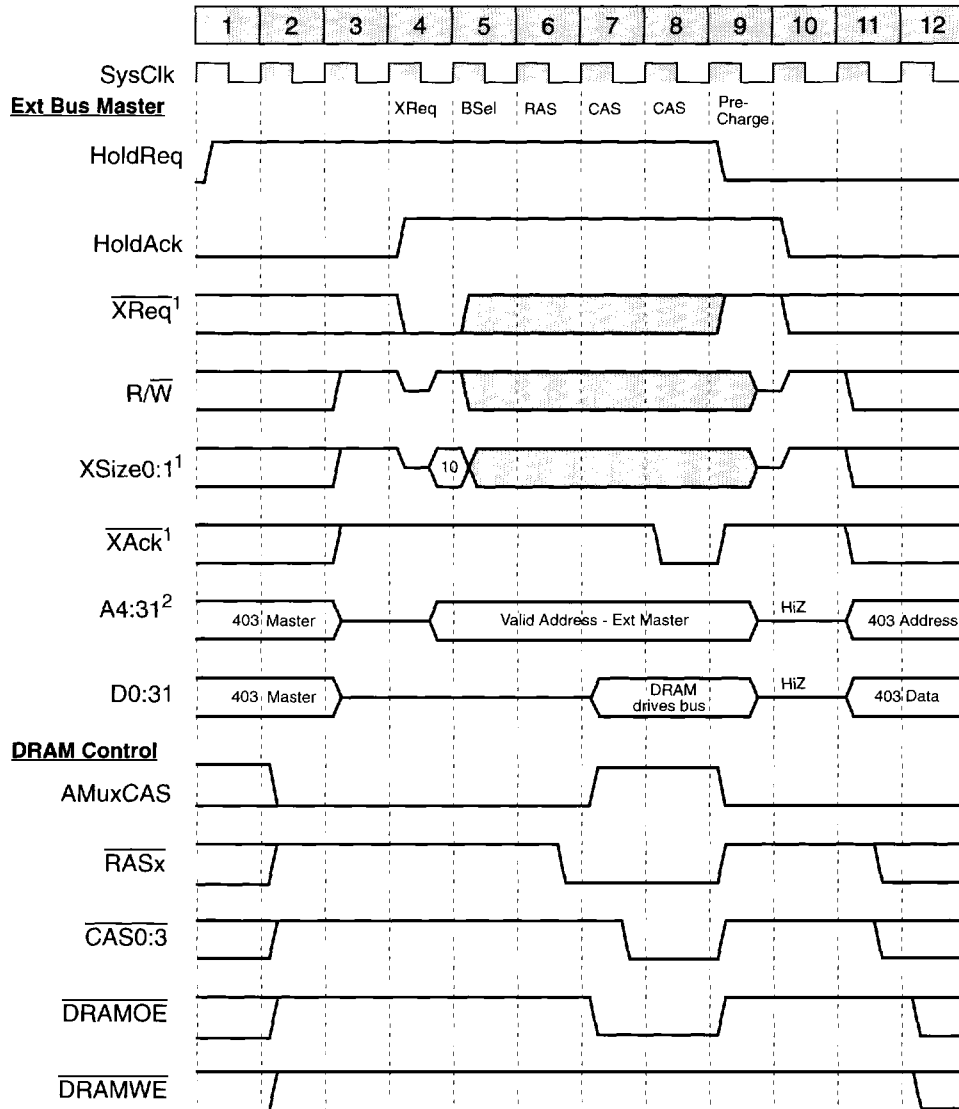
## DMA Control Register Bit Settings

Transfer Direction	Transfer Width	Transfer Mode	Peripheral Setup	Peripheral Wait	Peripheral Hold	Burst Mode
Bit 2	Bits 4:5	Bits 9:10	Bits 11:12	Bits 13:18	Bits 19:21	Bit 25
1	10	01	Note 3	xx xxxx	xxx	1

## Notes:

1. **DMAR** must be inactive at the end of cycle 9 (last **DMAA** cycle) to guarantee three transfers.
2. Peripheral data bus width must match DRAM bus width.
3. See diagram for settings.
4. This waveform assumes that the internal address mux is used.
5. **CAS0** is used for byte accesses, **CAS0:1** for halfwords, and **CAS0:3** for fullwords.
6. Numbers (1,2,3,...) in the **DMAR** signal represent when **DMAR** is sampled and accepted. Numbers (1,2,3,...) in the **DMADXFER** signal represent the transfer associated with the accepted **DMAR**.

## External Master Nonburst DRAM Read with HoldReq/HoldAck



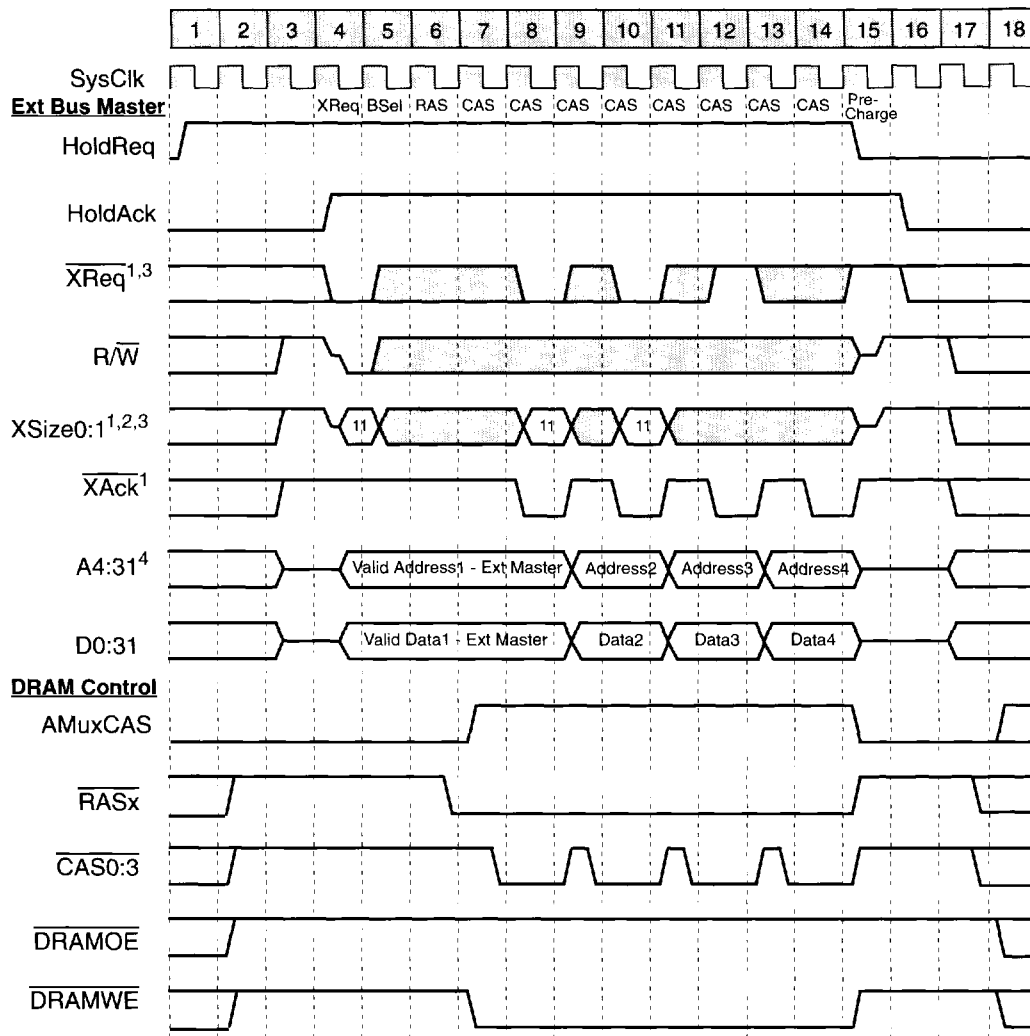
## Bank Register Bit Settings

SLF	ERM	Bus Width	Ext Mux	RAS-to-CAS	Refresh Mode	Page Mode	First Access	Burst Access	Prechg Cycles	Refresh RAS	Refresh Rate
Bit 13	Bit 14	Bits 15:16	Bit 17	Bit 18	Bit 19	Bit 20	Bits 21:22	Bits 23:24	Bit 25	Bit 26	Bits 27:30
0 or 1	0	10	1	0	0	0	01	xx	0	x	xxxx

## Notes:

1. XReq, XSize0, XSize1, and XAck are multiplexed with  $\overline{\text{DMAR3}}$ ,  $\overline{\text{EOT3/TC3}}$ ,  $\overline{\text{OE}}$ , and  $\overline{\text{DMAA3}}$ , respectively.
2. A4, A5, A30, and A31 are multiplexed with  $\overline{\text{WBE0}}$ ,  $\overline{\text{WBE1}}$ ,  $\overline{\text{WBE2}}$ , and  $\overline{\text{WBE3}}$ , respectively.

## External Master DRAM Burst Write, 3-2-2-2 Page Mode



## Bank Register Bit Settings

SLF	ERM	Bus Width	Ext Mux	RAS-to-CAS	Refresh Mode	Page Mode	First Access	Burst Access	Prechg Cycles	Refresh RAS	Refresh Rate
Bit 13	Bit 14	Bits 15:16	Bit 17	Bit 18	Bit 19	Bit 20	Bits 21:22	Bits 23:24	Bit 25	Bit 26	Bits 27:30
0 or 1	0	10	1	0	0	1	01	01	0	x	xxxx

## Notes:

1.  $\overline{XReq}$ ,  $\overline{XSize0}$ ,  $\overline{XSize1}$ , and  $\overline{XAck}$  are multiplexed with  $\overline{DMAR3}$ ,  $\overline{EOT3/TC3}$ ,  $\overline{OE}$ , and  $\overline{DMAA3}$ , respectively.
2.  $\overline{XSize0:1} = 11$  indicates a burst transfer at the width of the DRAM device.
3. The burst is terminated in cycle 10 by deasserting the  $\overline{XReq}$  input signal. A burst may also be terminated by deasserting either  $\overline{XSize0}$  or  $\overline{XSize1}$ .

A4, A5, A30, and A31 are multiplexed with  $\overline{WBE0}$ ,  $\overline{WBE1}$ ,  $\overline{WBE2}$ , and  $\overline{WBE3}$ , respectively.



© IBM Corporation 1995  
All rights reserved.

IBM Microelectronics, PowerPC, PowerPC Architecture, and 403GA are trademarks, IBM and the IBM logo are registered trademarks of IBM Corporation.

This document may contain preliminary information and is subject to change by IBM without notice. IBM assumes no responsibility of liability for any use of the information contained herein. Nothing in this document shall operate as an express or implied license or indemnity under the intellectual property rights of IBM or third parties. The products described in this document are not intended for use in implantation or other direct life support applications where malfunction may result in direct physical harm or injury to persons. NO WARRANTIES OF ANY KIND, INCLUDING BUT NOT LIMITED TO THE IMPLIED WARRANTIES OF MERCHANTABILITY OR FITNESS FOR A PARTICULAR PURPOSE, ARE OFFERED IN THIS DOCUMENT.

IBM Microelectronics Division  
1580 Route 52, Bldg. 504  
Hopewell Junction, NY 12533-6531  
Tel: (800) PowerPC  
Fax: (800) POWERfax

IBM  
La Pompignane BP 1021  
34006 Montpellier  
France  
Tel: (33) 6713-5757 (French)  
Tel: (33) 6713-5756 (Italian)  
Fax: (33) 6713-5750\*  
\*from Paris add 16

IBM  
Informations Systeme GmbH  
Laatzener Str. 1  
30539 Hannover  
Germany  
Tel: (49) 511-516-3444 (English)  
Tel: (49) 511-516-3555 (German)  
Fax: (49) 511-516-3888

IBM  
800, Ichimiyake,  
Yasu-cho, Yasu-gun,  
Shiga-ken, Japan 520-23  
Tel: (81) 775-87-4745  
Fax: (81) 775-87-4735