

Quality Features:

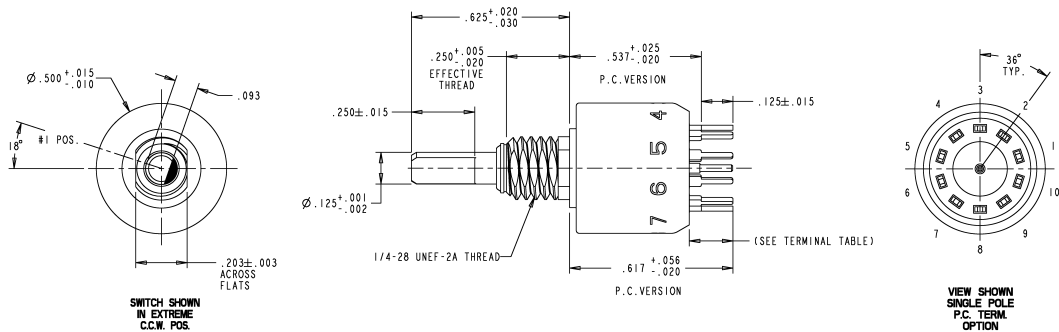
- MIL-S-3786/20 style available
- 1/2 inch diameter
- Optional seal for PC board assembly and cleaning available
- Choice of 36°, 45°, 60° and 90° angles of throw
- PC or Solder Lug termination
- Positive shaft grounding for EMI/RFI shielding available
- Screwdriver slotted shaft style available



Standard Characteristics/Ratings:				
ELECTRICAL :				
Contact Resistance:	50 milliohms max			
DWV:	600 VAC min			
Mechanical Life:	25,000 cycles of operation			
Load	Rating 28 VDC	Rating 115 VAC	Rating 220 VAC	Life Cycles (Min.)
Resistive	200 mA			25,000
Resistive		150 mA		25,000
Inductive	30 mA			25,000
Lamp load	100 mA			25,000
Lamp load			75 mA	25,000
MATERIALS AND FINISHES:				
Switch Base:	Thermoset			
Bushing:	Zinc, Cadmium plated			
Terminals:	Brass, Gold plated over Silverplate			
Panel Seal:	Silicone Rubber			
Shaft Seal:	Fluorosilicone			
Mounting Hardware:	One mounting nut .089" thick by .375" across flats and one internal tooth lockwasher are supplied with the switch.			
MECHANICAL CHARACTERISTICS:				
Rotational Torque:	8-24 inch-ounces.			
Detent Angles:	36°, 45°, 60° and 90°			
Stop Strength:	7.5 inch-pounds minimum			
Contact Type:	Shorting or non-shorting wiping contacts.			
Shaft Flat Orientation:	Flat opposite contacting position of pole number one.			
Terminals:	Switches are provided with the full circle of terminals, regardless of the number of active positions.			
Bushing Mounting:	Required for switches with stops, and recommended for switches without stops.			

1/2" DIAMETER MINIATURE ROTARY

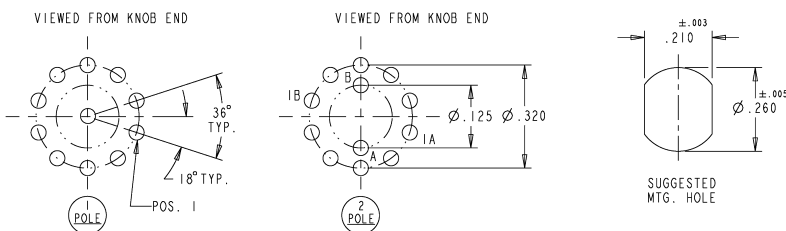
COMMERCIAL AND MILITARY GRADE



NOTE: TERMINAL TABLE NOT TO SCALE, DIMENSIONS FOR REFERENCE ONLY.

TERMINAL TYPE	OUTER TERMINALS	COMMON TERMINALS
SOLDER LUG		
PC TERMINAL		

Angle of Throw	Number of Poles	Number of Positions Per Pole
36°	1	02 thru 10
	2	02 thru 05
45°	1	02 thru 08
	2	02 thru 04
60°	1	02 thru 06
	2	02 thru 03
90°	1	02 thru 04
	2	02



Note: 45°, 60° & 90° drawings available upon request.

