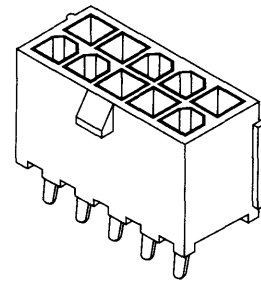




4.20mm (.165") Pitch Mini-Fit, Jr.TM Wire-to-Board Header

87427 Vertical without Flanges High Temperature Material



FEATURES AND SPECIFICATIONS

Features and Benefits

- Sizes 2 to 24 circuits
- Molded in high temperature, surface mount compatible material
- Fully isolated terminals to protect contacts from damage

Reference Information

Product Specification: PS-87427-0001

Packaging: Bag

UL File No.: E29179

CSA File No.: LR19980

Mates With: 5557 dual row receptacle

Designed in: Millimeters

Electrical

Voltage: 600V

Current: (Used with 16 AWG)

Circuits	2-3	4-6	7-10	12-24
Amperes-Jr.	9	8	7	6
Amperes-HCS	12	11	10	9

Contact Resistance: 10mΩ max.

Dielectric Withstanding Voltage: 1500V

Insulation Resistance: 1000 MΩ min.

Mechanical

Pin Retention Force: 9.81N (2.2 lb) min.

Mating Force: 14.23N (3.19 lb) max.

Unmating Force: 0.50N (0.11 lb) max.

Durability: 30 cycles

Physical

Housing: 4/6 Nylon, UL 94V-0

Contact: Brass (1.07 square)

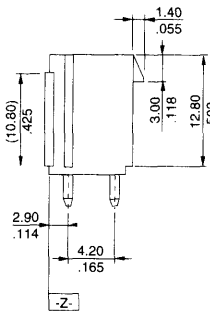
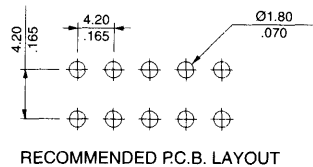
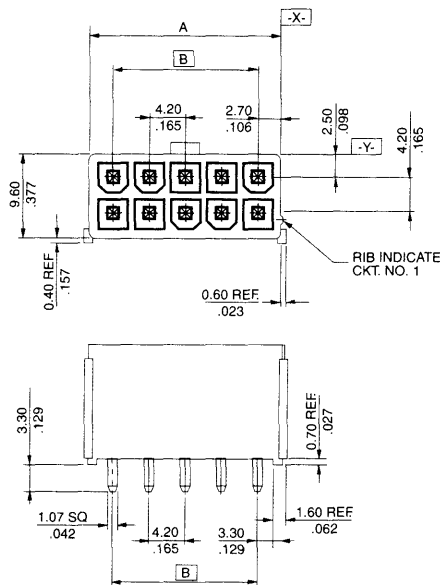
Plating: Tin

Operating Temperature: -40 to +105°C

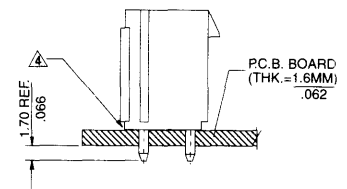
Power Connectors



CATALOG DRAWING (FOR REFERENCE ONLY)



△ Housing standoff (0.70mm REF.)



RECOMMENDED INSTALLATION PATTERN

ORDERING INFORMATION AND DIMENSIONS

Circuits	Order No.		Dimension	
	Tin Over Nickel Plating	Tin Over Copper Plating	A	B
2	87427-0242	87427-0243	5.40 (.212)	
4	87427-0442	87427-0443	9.60 (.377)	4.20 (.165)
6	87427-0642	87427-0643	13.80 (.543)	8.40 (.330)
8	87427-0842	87427-0843	18.00 (.708)	12.60 (.496)
10	87427-1042	87427-1043	22.20 (.874)	16.80 (.667)
12	87427-1242	87427-1243	26.40 (1.030)	21.00 (.826)
14	87427-1442	87427-1443	30.60 (1.204)	25.20 (.992)
16	87427-1642	87427-1643	34.80 (1.370)	29.40 (1.152)
18	87427-1842	87427-1843	39.00 (1.535)	33.60 (1.320)
20	87427-2042	87427-2043	43.20 (1.700)	37.80 (1.480)
22	87427-2242	87427-2243	47.40 (1.866)	42.00 (1.653)
24	87427-2442	87427-2443	51.60 (2.031)	46.20 (1.818)