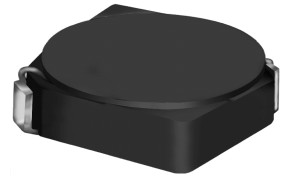
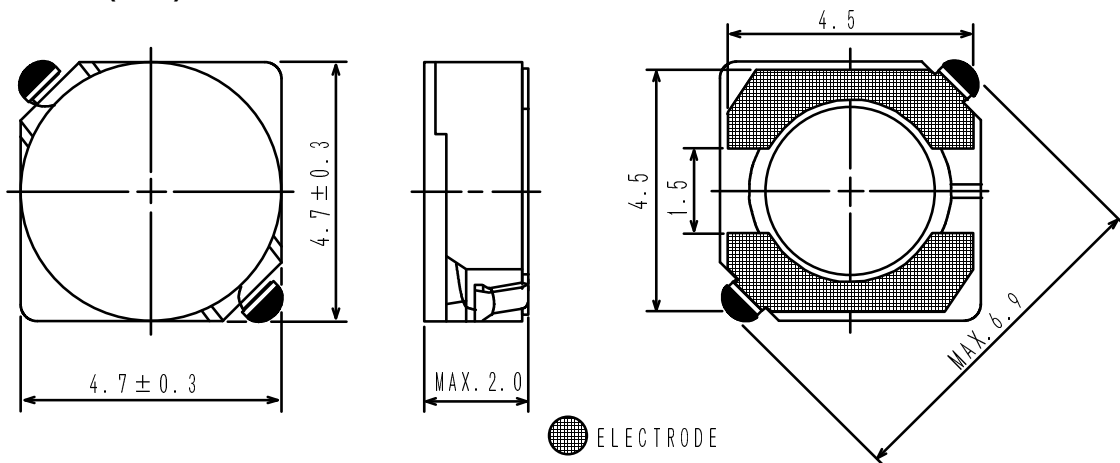
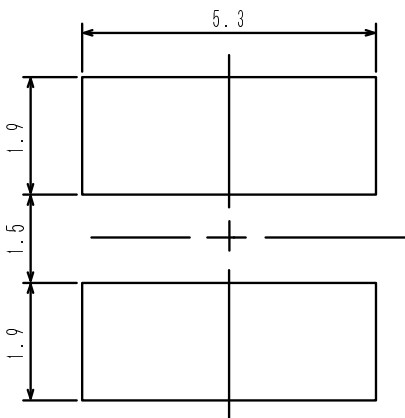


**Type: CDRH4D18/E**
**◆ Product Description**

- 5.0 × 5.0mm Max.(L × W), 2.0mm Max. Height.
- Inductance range: 1.2 ~ 100μH.
- Rated current range: 0.26 ~ 2.4A.
- Custom design is available.


**◆ Feature**

- Magnetically shielded construction.
- Storage temperature range: -40°C ~ +100°C.
- Operating temperature range: -40°C ~ +100°C (Including coil's self temperature rise).
- Ideally used in Mobile phone, PDA, MP3, HDD, DSC/DVC, Note book PC, etc as DC-DC converter inductors.
- RoHS compliance and Halogen Free.

**◆ Dimensions (mm)**

**◆ Land Pattern (mm)**


**Type: CDRH4D18/E**
**◆ Specification**

Part Name ※	Stamp	Inductance ( $\mu$ H) 100kHz/1V	D.C.R. ( $\Omega$ ) Max.(Typ.) (at 20°C)	Saturation Current (A) ※1		Temperature Rise Current (A) ※2
				at 20°C	at 105°C	
CDRH4D18ENP-1R2N□	1R2	1.2±30%	33m(26m)	2.40	2.0	2.67
CDRH4D18ENP-2R2N□	2R2	2.2±30%	43m(34m)	1.84	1.48	2.10
CDRH4D18ENP-2R7N□	2R7	2.7±30%	50m(40m)	1.68	1.31	2.00
CDRH4D18ENP-3R3N□	3R3	3.3±30%	71m(57m)	1.48	1.12	1.65
CDRH4D18ENP-3R9N□	3R9	3.9±30%	81m(64m)	1.36	1.01	1.42
CDRH4D18ENP-4R7N□	4R7	4.7±30%	117m(93m)	1.20	0.94	1.21
CDRH4D18ENP-5R6N□	5R6	5.6±30%	130m(104m)	1.12	0.87	1.16
CDRH4D18ENP-6R8N□	6R8	6.8±30%	143m(114m)	1.02	0.81	1.08
CDRH4D18ENP-8R2N□	8R2	8.2±30%	157m(125m)	0.96	0.74	1.03
CDRH4D18ENP-100N□	100	10±30%	178m(141m)	0.86	0.68	0.90
CDRH4D18ENP-120N□	120	12±30%	192m(153m)	0.77	0.6	0.86
CDRH4D18ENP-150N□	150	15±30%	240m(178m)	0.69	0.54	0.81
CDRH4D18ENP-180N□	180	18±30%	338m(250m)	0.63	0.51	0.70
CDRH4D18ENP-220N□	220	22±30%	397m(294m)	0.58	0.45	0.65
CDRH4D18ENP-270N□	270	27±30%	441m(327m)	0.52	0.4	0.57
CDRH4D18ENP-330N□	330	33±30%	694m(514m)	0.46	0.36	0.47
CDRH4D18ENP-390N□	390	39±30%	709m(525m)	0.43	0.33	0.44
CDRH4D18ENP-470N□	470	47±30%	922m(683m)	0.40	0.30	0.38
CDRH4D18ENP-560N□	560	56±30%	1.08(800m)	0.36	0.28	0.35
CDRH4D18ENP-680N□	680	68±30%	1.30(1.00)	0.33	0.26	0.30
CDRH4D18ENP-820N□	820	82±30%	1.56(1.20)	0.30	0.24	0.28
CDRH4D18ENP-101N□	101	100±30%	1.73(1.33)	0.27	0.22	0.26

**※ Description of part name**

CDRH4D18ENP-1R2N□

- B Box
- C Carrier Tape

※1. Saturation current: The DC current at which the inductance decreases to 65% of its nominal value.

 ※2. Temperature rise current: The DC current at which the temperature rise is  $\Delta t=40^{\circ}\text{C}$  ( $T_a=20^{\circ}\text{C}$ ).