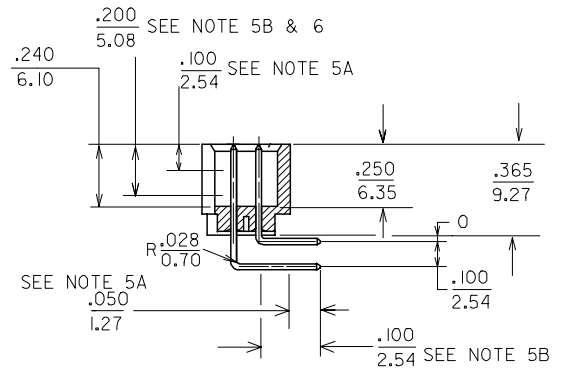
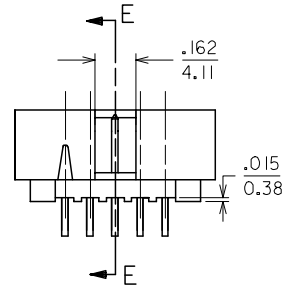
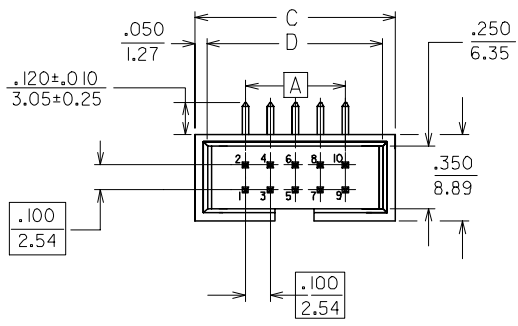


ASSEMBLY PART NO.	CKT SIZE	A	B	C	D	VOIDED PIN LOCATION(S)
70247-2661	26	1.200/30.48	1.480/37.59	1.600/40.64	1.500/38.10	CKT #18
70247-4062	40	1.900/48.26	2.180/55.37	2.300/58.42	2.200/55.88	CKT #21

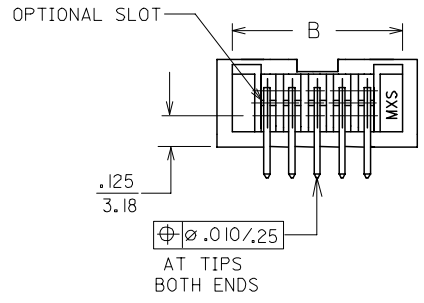
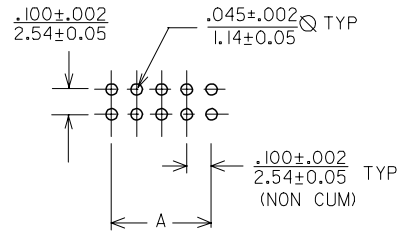


SECTION E-E

NOTES:

- PIN PUSHOUT FORCE (.9072KG)/2LBS MIN.
- PIN SOLDERABILITY PER MOLEX SPEC. ES-152
- PRODUCT SPEC: PS-70246 APPLIES.
- WAFER TO BE FLAT WITHIN (0.03MM/CM) 0.003IN/IN
- DIMENSIONS FOR PLATING LOCATION : A-MEASURE POINT FOR THICKNESS. B-MINIMUM COVERAGE
- GOLD END OF PIN UNLESS OVERALL PLATED.
- PLATING : 15uin MIN AU & 75uin MIN TIN IN SELECTIVE AREA. WITH 50U IN MIN NICKEL UNDERPLATE OVERALL.
- NUMBERS ON THE HSG ARE FOR LOCATING VOIDED/KINKED PINS PURPOSES ONLY.
- FOR ILLUSTRATION PURPOSES, 10 CKT HOUSING IS SHOWN.
- MATERIAL:
PIN: .025 SQ, 260 BRASS OR EQUIVALENT.
HSG: PBT, GLASS FILLED, UL94V-0, COLOR: BLACK.

RECOMMENDED P.C. BOARD HOLE LAYOUT



OBS TIN/LEAD P/N	DRW:MLONG	2006/04/17
EC NO: S2006-0952	CHKD: NAGESHKN	2006/04/18
	APPR: PTLIM	2006/04/21
D	REV	

QUALITY SYMBOLS	DESCRIPTION
▽=0	
▽=0	

GENERAL TOLERANCES (UNLESS SPECIFIED)	
	mm
	INCH
4 PLACES	± .008
3 PLACES	± .010
2 PLACES	± .015
1 PLACE	± .020
ANGULAR ± 3°	
DRAFT WHERE APPLICABLE MUST REMAIN WITHIN DIMENSIONS	

DIMENSION STYLE		SCALE	DESIGN UNITS	THIRD ANGLE PROJECTION
IN/MM		NTS	METRIC	
DRAWN BY	DATE	TITLE		
JWAN	1992/03/05	C-GRID, SHROUDED HEADER W/OPT. VOIDS, R/A (SLOTTED W/O STANDOFFS)		
CHECKED BY	DATE			
GWANG	1992/03/06			
APPROVED BY	DATE			
PTH0	1992/03/06			
MATERIAL NO.	DOCUMENT NO.			
SEE TABLE	SD-70247-**60-61			
SIZE	THIS DRAWING CONTAINS INFORMATION THAT IS PROPRIETARY TO MOLEX INCORPORATED AND SHOULD NOT BE USED WITHOUT WRITTEN PERMISSION			
A3				

MOLEX INCORPORATED		SHEET NO.
		1 OF 1