

FIG. 2
-K: POLYAMIDE FILM PAD
[USE K-850-650]

AD

NOTE: "R" = ((No OF POSITIONS / 20) x .7875[20.003]) + .050[1.27]
WITH -GP OPTION: "R" = ((No OF POSITIONS / 20) x .7875[20.003]) + .429[10.90] REF
"S" = (("R" - .325[8.26]) / 2) ±.020[.51]

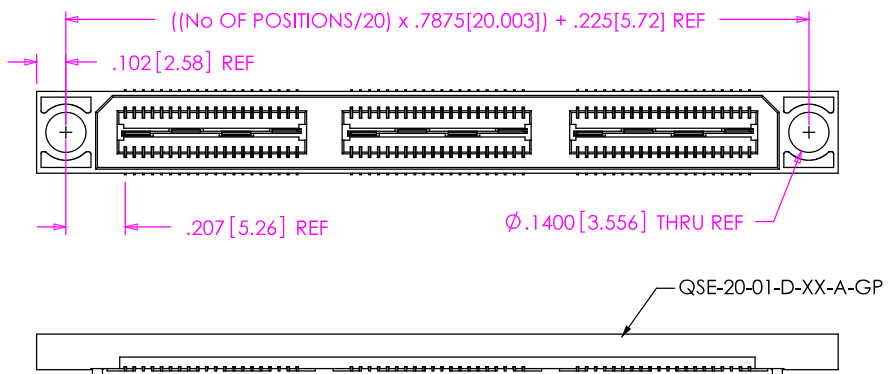


FIG. 3
-GP OPTION
[SAME AS FIG. 1, UNLESS OTHERWISE STATED]
[AVAILABLE ON LEAD STYLE -01 & -01-A ONLY]
(40 POS. MAX WITH T & R PACKAGING)

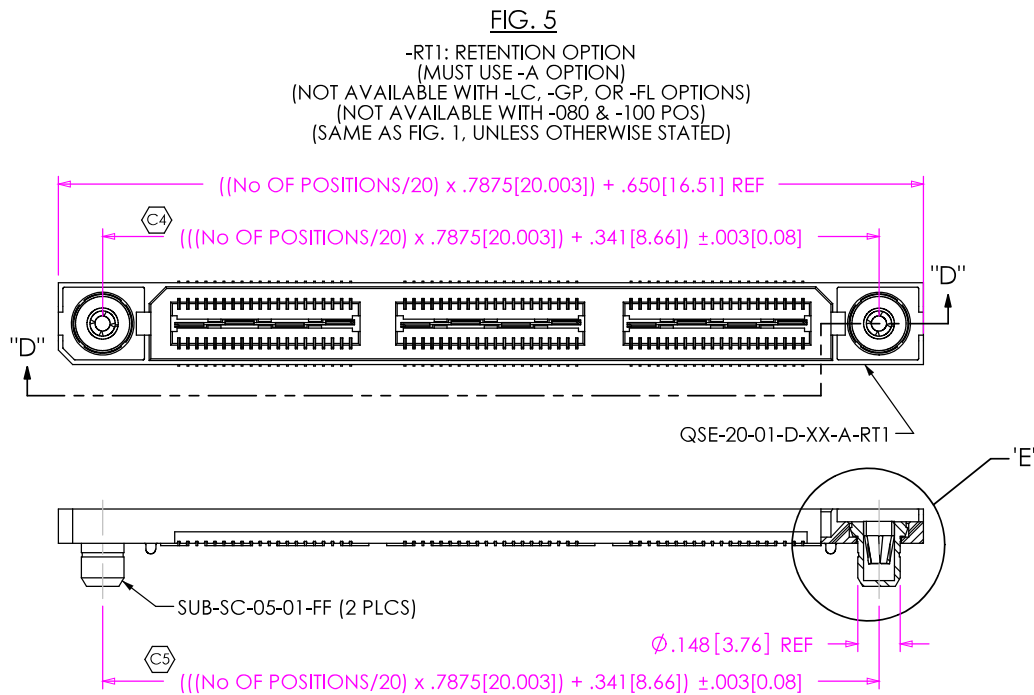


FIG. 5
-RT1: RETENTION OPTION
(MUST USE -A OPTION)
(NOT AVAILABLE WITH -LC, -GP, OR -FL OPTIONS)
(NOT AVAILABLE WITH -080 & -100 POS)
(SAME AS FIG. 1, UNLESS OTHERWISE STATED)

SECTION "D"-"D"
SCALE 1.5 : 1

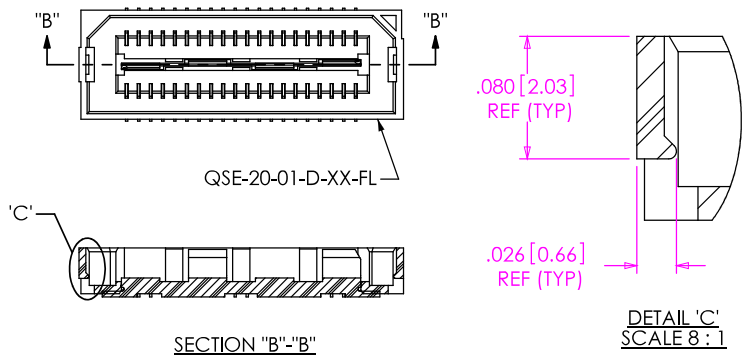
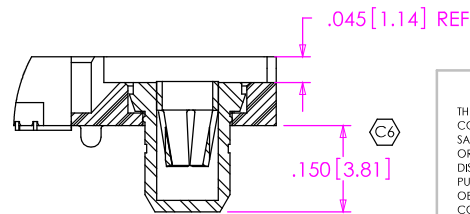


FIG. 4
-FL: FRICTION LOCKS
(NOT AVAILABLE WITH -GP OPTION)
(SAME AS FIG. 1, UNLESS OTHERWISE STATED)



DETAIL 'E'
SCALE 3 : 1

F:\DWG\MISC\MKTG\QSE-XXX-01-X-D-XXX-MKT.SLDDRW

PROPRIETARY NOTE
THIS DOCUMENT CONTAINS INFORMATION
CONFIDENTIAL AND PROPRIETARY TO
SAMTEC, INC. AND SHALL NOT BE REPRODUCED
OR TRANSFERRED TO OTHER DOCUMENTS OR
DISCLOSED TO OTHERS OR USED FOR ANY
PURPOSE OTHER THAN THAT WHICH IT WAS
OBTAINED WITHOUT THE EXPRESSED WRITTEN
CONSENT OF SAMTEC, INC.

DO NOT SCALE DRAWING
SHEET SCALE: 2:1

samtec

520 PARK EAST BLVD, NEW ALBANY, IN 47150
PHONE: 812-944-6733 FAX: 812-948-5047
e-Mail: info@SAMTEC.com code: 55322

DESCRIPTION:
.8mm DOUBLE ROW HS SOCKET ASSEMBLY

DWG. NO.
QSE-XXX-01-X-D-XXX

BY: ERIC M 05/20/1999 SHEET 2 OF 2