

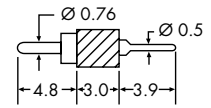
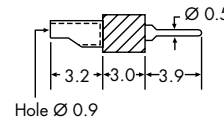
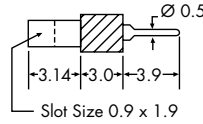
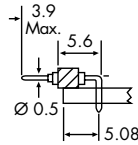
# SINGLE IN LINE MODULAR SOCKETS



Single row modular 2.54mm pitch sockets fitted with a four leaf beryllium copper contact for high reliability.

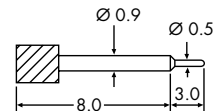
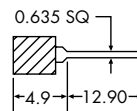
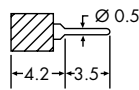
- The sockets intermate with the modular headers detailed below, or integrated circuits.
- Can be cut to size.

## HEADERS



No. of Ways	90° Plug (Tin)	Slotted (Tin)	Solder Cup (Tin)	Through Connect (Tin)
4	D01-9990401	D01-9940401	D01-9930401	D01-9920401
5	D01-9990501	D01-9940501	D01-9930501	D01-9920501
6	D01-9990601	D01-9940601	D01-9930601	D01-9920601
7	D01-9990701	D01-9940701	D01-9930701	D01-9920701
8	D01-9990801	D01-9940801	D01-9930801	D01-9920801
9	D01-9990901	D01-9940901	D01-9930901	D01-9920901
10	D01-9991001	D01-9941001	D01-9931001	D01-9921001
12	D01-9991201	D01-9941201	D01-9931201	D01-9921201
14	D01-9991401	D01-9941401	D01-9931401	D01-9921401
16	D01-9991601	D01-9941601	D01-9931601	D01-9921601
18	D01-9991801	D01-9941801	D01-9931801	D01-9921801
20	D01-9992001	D01-9942001	D01-9932001	D01-9922001
32	D01-9993201	D01-9943201	D01-9933201	D01-9923201

## SOCKETS



No. of Ways	Solder (Gold)	Wrap (Gold)	Extended (Gold)
4	D01-9970401	D01-9950401	D01-9800401
5	D01-9970501	D01-9950501	D01-9800501
6	D01-9970601	D01-9950601	D01-9800601
7	D01-9970701	D01-9950701	D01-9800701
8	D01-9970801	D01-9950801	D01-9800801
9	D01-9970901	D01-9950901	D01-9800901
10	D01-9971001	D01-9951001	D01-9801001
12	D01-9971201	D01-9951201	D01-9801201
14	D01-9971401	D01-9951401	D01-9801401
16	D01-9971601	D01-9951601	D01-9801601
18	D01-9971801	D01-9951801	D01-9801801
20	D01-9972001	D01-9952001	D01-9802001
32	D01-9973201	D01-9953201	D01-9803201

### Your Custom Variants

To create a variant of those shown above, fax a sketch back to HARWIN for a quotation, detailing the type, number of ways and the finish.