

The LS3N164 is an enhancement mode P-Channel Mosfet

The LS3N164 is an enhancement mode P-Channel Mosfet designed for use as a General Purpose amplifier or switch

The hermetically sealed TO-72 package is well suited for high reliability and harsh environment applications.

(See Packaging Information).

LS3N164 Features:

- Very high Input Impedance
- Low Capacitance
- High Gain
- High Gate Breakdown Voltage
- Low Threshold Voltage

FEATURES

DIRECT REPLACEMENT FOR INTERSIL LS3N164

ABSOLUTE MAXIMUM RATINGS¹
@ 25°C (unless otherwise noted)

Maximum Temperatures

Storage Temperature	-65°C to +200°C
Operating Junction Temperature	-55°C to +150°C

Maximum Power Dissipation

Continuous Power Dissipation	375mW
------------------------------	-------

MAXIMUM CURRENT

Drain Current	50mA
---------------	------

MAXIMUM VOLTAGES

Drain to Gate	-30V
Drain to Source	-30V
Peak Gate to Source ²	±125V

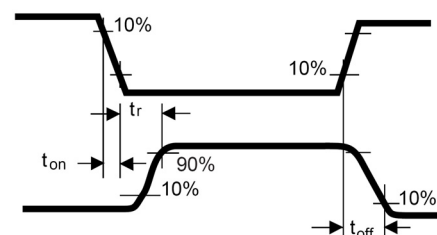
LS3N164 ELECTRICAL CHARACTERISTICS @ 25°C (unless otherwise noted)

SYMBOL	CHARACTERISTIC	MIN	TYP.	MAX	UNITS	CONDITIONS
I_{GSSF}	Gate Forward Current	-10	--	--	pA	$V_{GS} = -30V, V_{DS} = 0V$
		$T_A = +125^\circ C$	--	-25		
BV_{DSS}	Drain to Source Breakdown Voltage	-30	--	--	V	$I_D = -10\mu A, V_{GS} = 0V$
BV_{SDS}	Source-Drain Breakdown Voltage	-30	--	--		$I_S = -10\mu A, V_{GD} = 0V, V_{BD} = 0V$
$V_{GS(th)}$	Gate to Source Threshold Voltage	-2.0	--	-5.0		$V_{DS} = V_{GS}, I_D = -10\mu A$
		-2.0	--	-5.0		$V_{DS} = -15V, I_D = -10\mu A$
V_{GS}	Gate Source Voltage	-3.0	--	-6.5		$V_{DS} = -15V, I_D = -0.5mA$
I_{DSS}	Drain Leakage Current "Off"	--	--	200	pA	$V_{DS} = -15V, V_{GS} = 0V$
I_{SDS}	Source Drain Current	--	--	400	pA	$V_{DS} = 15V, V_{GS} = V_{DB} = 0V$
$r_{DS(on)}$	Drain to Source "On" Resistance	--	--	250	Ω	$V_{GS} = -20V, I_D = -100\mu A$
$I_{D(on)}$	Drain Current "On"	-5.0	--	-30	mA	$V_{DS} = -15V, V_{GS} = -10V$
g_{fs}	Forward Transconductance	2000	--	4000	μS	$V_{DS} = -15V, I_D = -10mA, f = 1kHz$
g_{os}	Output Admittance	--	--	250	μS	
C_{iss}	Input Capacitance—Output shorted	--	--	2.5	pF	$V_{DS} = -15V, I_D = -10mA, f = 1MHz^3$
C_{rss}	Reverse Transfer Capacitance	--	--	0.7		
C_{oss}	Output Capacitance - Input Shorted	--	--	3.0		

SWITCHING CHARACTERISTICS - $T_A = 25^\circ C$ and $V_{BS} = 0$ unless otherwise noted

SYMBOL	CHARACTERISTIC	MAX	UNITS	CONDITIONS
$t_{d(on)}$	Turn On Delay Time	12	ns	$V_{DD} = -15V$ $I_{D(on)} = -10mA$ $R_G = R_L = 1.4K\Omega^3$
t_r	Turn On Rise Time	24		
t_{off}	Turn Off Time	50		

TIMING WAVEFORMS



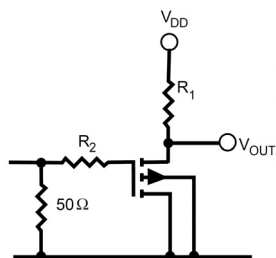
INPUT PULSE

Rise Time $\leq 2ns$
Pulse Width $\geq 200ns$

SAMPLING SCOPE

$T_r \leq 0.2ns$
 $C_N \leq 2pF$
 $R_N \geq 10M$

SWITCHING TEST CIRCUIT



Note 1 - Absolute maximum ratings are limiting values above which LS3N164 serviceability may be impaired.
Note 2 - Device must not be tested at $\pm 125V$ more than once or longer than 300ms.
Note 3 - For design reference only, not 100% tested

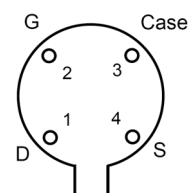
Micross Components Europe

Available Packages:

LS3N164 in TO-72
LS3N164 in bare die.

Please contact Micross for full package and die dimensions

TO-72 (Bottom View)



Tel: +44 1603 788967

Email: chipcomponents@micross.com

Web: <http://www.micross.com/distribution>

Information furnished by Linear Integrated Systems and Micross Components is believed to be accurate and reliable. However, no responsibility is assumed for its use; nor for any infringement of patents or other rights of third parties which may result from its use. No license is granted by implication or otherwise under any patent or patent rights of Linear Integrated Systems.