

Inlet filter, rear side "lock and shield" mounting

Standard- or Medical-Filter



GRF4: with shield and line filter



Description

- Panel Mount:
Snap-In Version from rear-side
- 3 Functions:
Inlet Protection class I, with EMC-shield, Line filter in standard and medical version
- Quick-connect terminals 4.8 x 0.8 mm
- Alternative: version without line filter [GRF2](#)

Approvals

- VDE License Number: 102348
- UL License Number: E72928
- CSA License Number: 701867

Characteristics

- Time saving "Lock and Shield" snap-in design for rear-panel mounting
- All single elements are already wired
- Innovative EMC-shielding with flexible steel segments for an excellent contact to the panel
- Qualified for use in equipment according IEC/EN 60950

Other versions on request

- Panel thickness 1.2 mm and 2.0 mm
- With solder terminals

References

[General Product Information](#)

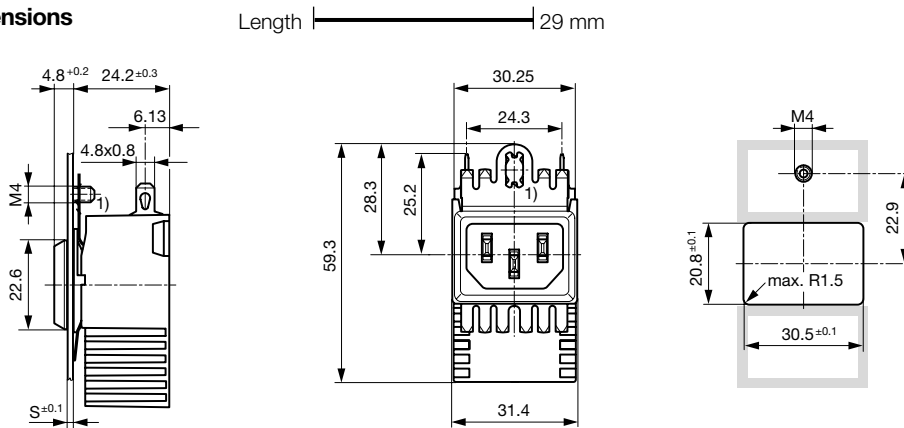
Weblinks

Approvals: www.schurter.com/approvals
 RoHS: <http://www.schurter.com/rohs>
 CHINA-RoHS: www.schurter.com/china-rohs
 Webstore: www.schurterinc.com/estore/search.ihtml

Technical Data

Ratings IEC	0.5 - 10A @ Ta 40 °C / 250VAC; Hz 50	Appliance-Inlet /-Outlet	C14 acc. to IEC/EN 60320-1, UL 498, CSA C22.2 no. 42 (for cold condition) pin-temperature 70 °C, 10A, Protection class I
Ratings UL/CSA	0.5 - 15A @ Ta 40 °C / 125VAC; 60Hz	Line Filter	Standard and Medical Version, IEC 60939, IEC 60601-1, UL 1283, UL 544, EN 133 200, CSA C22.2 no. 8 Technical details
Leakage Current	standard < 0.5mA (250V / 60Hz) medical < 5 µA (250 V / 60 Hz)	MTBF	> 3'300'000h acc. to MIL-HB-217 F
Dielectric Strength	> 1.7 kVDC between L-N > 2.7 kVDC between L/N-PE Test voltage (2 sec)		
Allowable Operation Temp.	-25 °C to 85 °C		
Climatic Category	25/085/21 acc. to IEC 60068-1		
Degree of Protection	from front side IP 40 acc. to IEC 60529		
Protection Class	Suitable for appliances with protection class I acc. to IEC 61140		
Terminal	Quick-connect terminals 4.8 x 0.8 mm Solder terminal on request		
Panel Thickness s	Snap-in: 1.5 mm (other on request)		
Material: Housing	Thermoplastic, black, UL 94V-0		

Dimensions GRF4

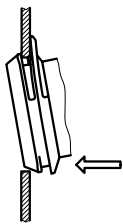


This area must be conductive for optimal shielding. Do not apply paint or coatings.

Technical Data of Filter-Components

Rated Current [A]	Filter-Type	Inductances L [mH]	Capacitance CX	Capacitance CY	R [MW]
0.5	Standard Version	2 x 24	100	2.2	-
1	Standard Version	2 x 12	100	2.2	-
3	Standard Version	2 x 2.5	100	2.2	-
6	Standard Version	2 x 0.78	100	2.2	-
10	Standard Version	2 x 0.225	100	2.2	-
15	Standard Version	2 x 0.075	100	2.2	-
0.5	Medical Version (M5)	2 x 24	100	-	1
1	Medical Version (M5)	2 x 12	100	-	1
3	Medical Version (M5)	2 x 2.5	100	-	1
6	Medical Version (M5)	2 x 0.78	100	-	1
10	Medical Version (M5)	2 x 0.225	100	-	1
15	Medical Version (M5)	2 x 0.075	100	-	1

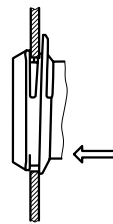
Mounting instructions



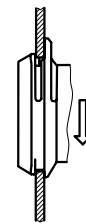
Step 1
Place the socket in the top edge of the panel cut-out



Step 2
Push the socket upwards



Step 3
Push the socket forward into the panel cut-out

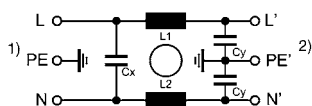


Step 4
Release the socket. The component is self adjusting.

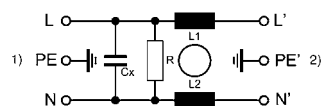
Diagrams

Standard version

Medical version



1) Line
2) Load

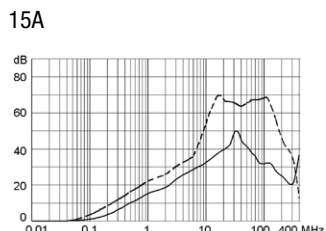
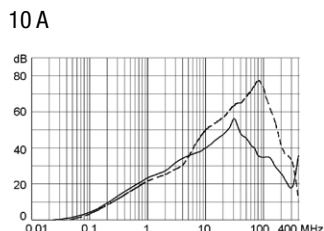
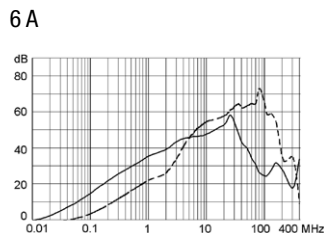
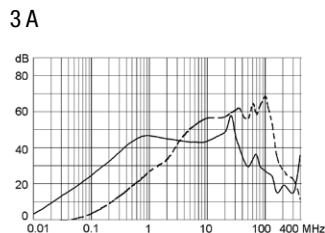
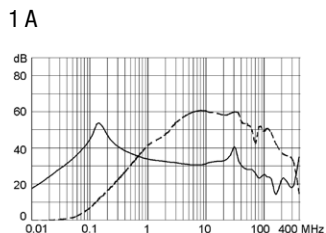
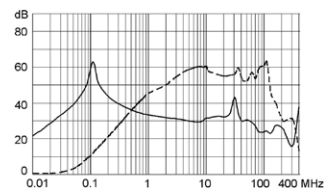


1) Line
2) Load

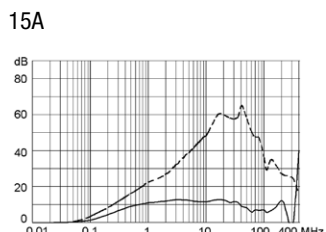
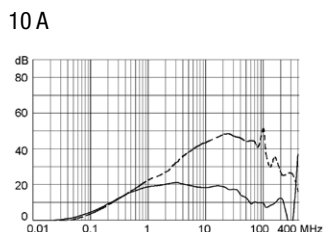
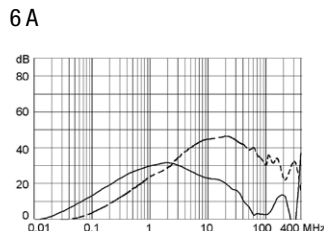
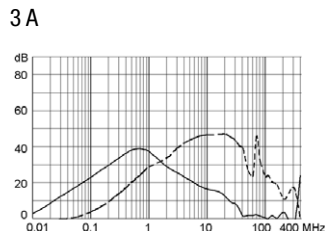
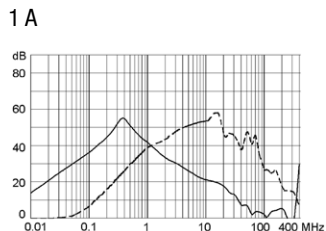
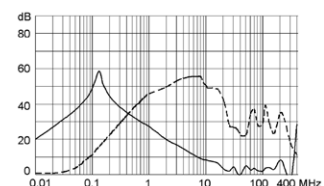
Attenuation Loss

Standard version
0.5 A

--- differential mode — common mode



Medical version (M5)
0.5 A



Variants

[Webstore](#)

Rated Current IEC [A]	Rated Current UL [A]	Filter-Type	Panel Thickness s [mm]	Additional ground terminal	Order Number
0.5	0.5	Standard Version	1.5		GRF4.0411.013
1	1	Standard Version	1.5		GRF4.0412.013
3	3	Standard Version	1.5		GRF4.0413.013
6	6	Standard Version	1.5		GRF4.0416.013
10	10	Standard Version	1.5		GRF4.0417.013
15	15	Standard Version	1.5		GRF4.0419.013
0.5	0.5	Medical Version (M5)	1.5		GRF4.0021.013
1	1	Medical Version (M5)	1.5		GRF4.0022.013
3	3	Medical Version (M5)	1.5		GRF4.0023.013
6	6	Medical Version (M5)	1.5		GRF4.0026.013
10	10	Medical Version (M5)	1.5		GRF4.0027.013
15	15	Medical Version (M5)	1.5		GRF4.0029.013

Packaging unit 200 Pcs