

REVISION AK  
DO NOT SCALE FROM THIS PRINT

UNLESS OTHERWISE NOTED  
DIMENSIONS ARE IN INCHES  
TOLERANCES ARE:  
ONE PLACE DECIMALS: ± .1  
TWO PLACE DECIMALS: ± .01  
THREE PLACE DECIMALS: ± .005  
FOUR PLACE DECIMALS: ± .0020  
ANGLES  
± 5°

TITLE: RECEPTACLE SURFACE MOUNT (DOUBLE ROW)  
DWG NO: RSM-1XX-XX-XXX-D-XX  
SHEET 1 OF 2

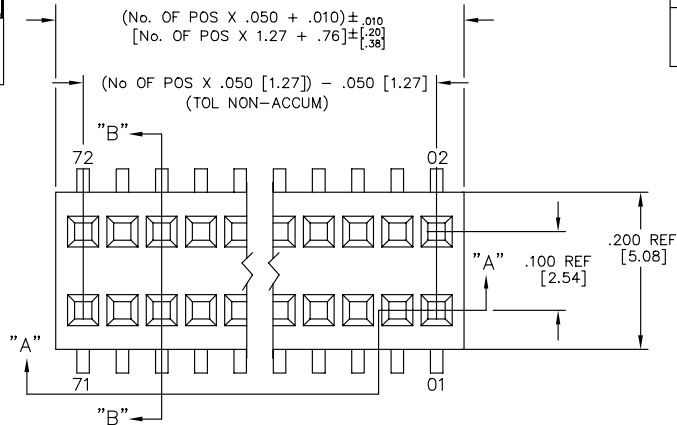
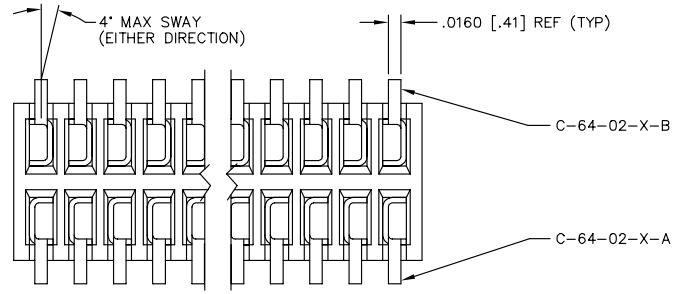
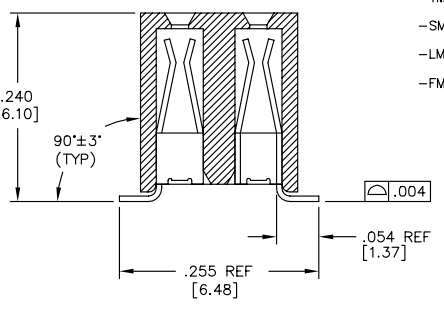
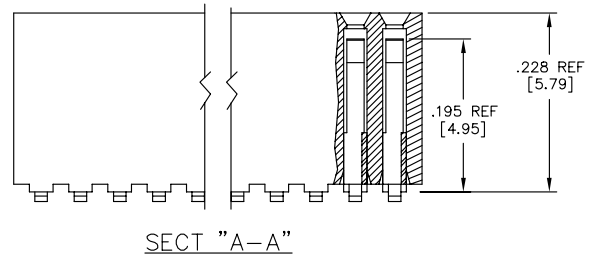
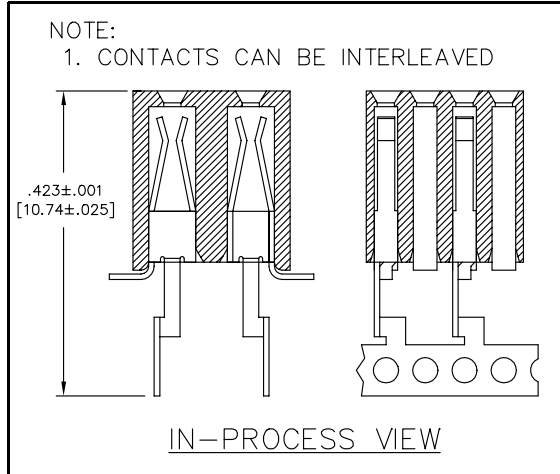


FIG. 1



- RSM-1XX-XX-XXX-D-XX
- BODY LENGTH SPECIFICATION  
-02 THRU -40 POSITIONS
- LEAD STYLE  
-02: C-64-02-X
- PLATING SPECIFICATIONS  
-S: SELECTIVE GOLD (USE C-64-02-S-X)  
-P: FLASHED GOLD PALLADIUM NICKEL (USE C-64-02-P-X)  
-F: FLASH GOLD (USE C-64-02-F-X)  
-L: LIGHT SELECTIVE GOLD (USE C-64-02-L-X)  
-T: TIN (USE C-64-02-T-X)  
-STL: SELECTIVE TIN LEAD (USE C-64-02-STL-X)  
-H: HEAVY GOLD (USE C-64-02-H-X)  
-TM: MATTE TIN (USE C-64-02-T-X)  
-SM: HEAVY SELECTIVE GOLD, MATTE TIN TAIL (USE C-64-02-S-X)  
-LM: LIGHT SELECTIVE GOLD, MATTE TIN TAIL (USE C-64-02-L-X)  
-FM: FLASH SELECTIVE GOLD, MATTE TIN TAIL (USE C-64-02-F-X)
- OPTIONS  
-LC: LOCKING CLIP (USE LC-05-TM)(SEE FIG 2, SHT 2)  
-P: PICK AND PLACE PAD (AVAILABLE ON POS. 5 THRU 40 ONLY) (USE MPP-02)(SEE FIG 3, SHT 2)  
-K: POLYAMIDE FILM PAD (AVAILABLE ON POS. 5 THRU 40 ONLY) (.005 [-.13] THICKNESS WITH SILICONE ADHESIVE)(SEE FIG 4, SHT 2) (USE K-500-300)  
-TR: TAPE & REEL
- BODY SPECIFICATION  
-D: DOUBLE ROW (USE RSM-XX-D)

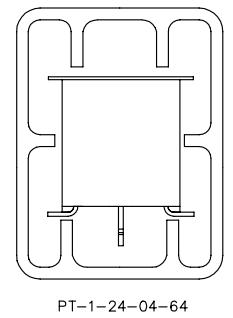
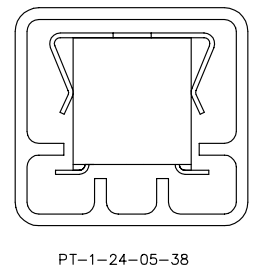


1. WILL LOSE A POSITION FOR EVERY CUT MADE ON A SOCKET STRIP;  
CUT FLASH TO BE .010 [.25] MAX WITH NO FLASH ALLOWED IN HOLES OR EXTENDING BELOW LEADS.
2. Ⓢ REPRESENTS A CRITICAL DIMENSION.
3. MINIMUM RETENTION FORCE: 1.0 LB.

PACKAGING

- NOTES:  
1. 1st POSITION TO BE LOADED IN TUBE IN THE DIRECTION OF THE ARROW.  
2. LAYER PACKAGE POSITIONS 2-4, TUBE PACKAGE POSITIONS 5-36  
3. ENDWALLS TO BE .020 ± .003"

OPTION	TUBE	PLUG
-K, -LC, -K-LC	PT-1-24-04-64	TP-03
NONE, -P, -P-LC	PT-1-24-05-38	TP-09



**PROPRIETARY NOTE**  
THIS DOCUMENT CONTAINS INFORMATION CONFIDENTIAL AND PROPRIETARY TO SAMTEC INC AND SHALL NOT BE REPRODUCED OR TRANSFERRED TO OTHER DOCUMENTS OR DISCLOSED TO OTHERS OR USED FOR ANY PURPOSE OTHER THAN THAT FOR WHICH IT WAS OBTAINED WITHOUT THE EXPRESSED WRITTEN CONSENT OF SAMTEC INC.

EXISPROD\ASSEMBLY\050 RSM-DASM

**samtec**

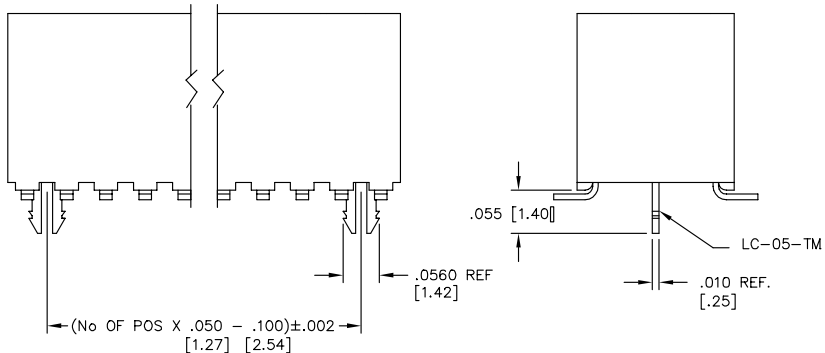
520 PARK EAST BLVD. NEW ALBANY, INDIANA 47150  
PHONE (812) 944-6733 P.O. BOX 1147  
CODE 55322

MADE BY: GREG REIDINGER 11-24-92

RSM-1XX-XX-XXX-D-XX  
SHEET 1 OF 2

REV. AK

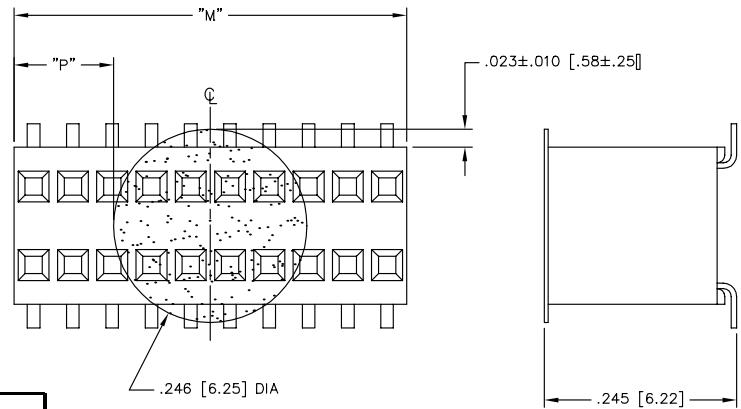
FIG. 2  
-LC: LOCKING CLIP



UNLESS OTHERWISE NOTED  
DIMENSIONS ARE IN INCHES  
TOLERANCES ARE:  
ONE PLACE DECIMALS: ± .1  
TWO PLACE DECIMALS: ± .01  
THREE PLACE DECIMALS: ± .005  
FOUR PLACE DECIMALS: ± .0020  
ANGLES  
± 5°

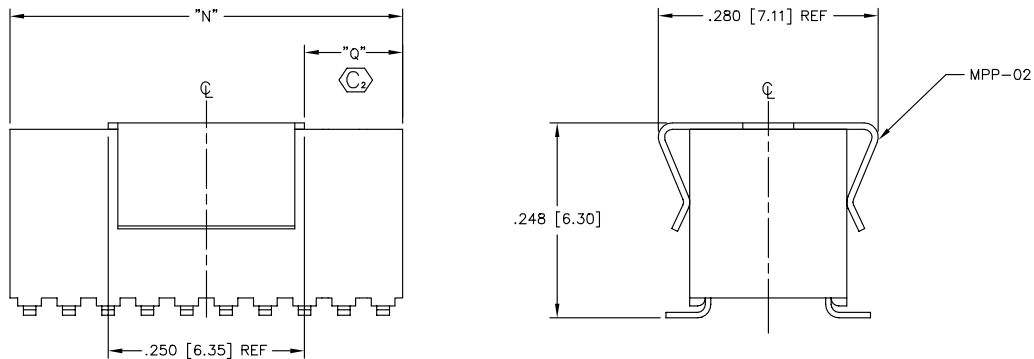
TITLE: RECEPTACLE SURFACE MOUNT (DOUBLE ROW)  
DWG NO: RSM-1XX-XX-XXX-D-XX  
SHEET 2 OF 2

FIG. 4  
-K: POLYAMIDE FILM PAD  
(AVAILABLE ON POS 5 - 50 ONLY)



NOTE: "M" = USE MEASURED DIMENSION (REF)  
"P" = {("M" - .246 [6.25]) / 2} ± .020 [.51]

FIG. 3  
-P: PICK AND PLACE PAD  
(AVAILABLE ON POS 5 - 50 ONLY)



NOTE: "N" = USE MEASURED DIMENSION (REF)  
"Q" = {("N" - .250 [6.35]) / 2} ± .020 [.51]

**PROPRIETARY NOTE**  
THIS DOCUMENT CONTAINS INFORMATION CONFIDENTIAL AND PROPRIETARY TO SAMTEC INC. AND SHALL NOT BE REPRODUCED OR TRANSMITTED TO OTHER DOCUMENTS OR DISCLOSED TO OTHERS OR USED FOR ANY PURPOSE OTHER THAN THAT FOR WHICH IT WAS OBTAINED WITHOUT THE EXPRESSED WRITTEN CONSENT OF SAMTEC INC.

EXISPROD\ASSEMBLY\050  
RSMDSM2

**samtec**

520 PARK EAST BLVD. NEW ALBANY, INDIANA 47150  
PHONE (812) 944-6733 P.O. BOX 1147  
CODE 55322

MADE BY: GREG REIDINGER 11-24-92  
CHECKED BY:

APPROVAL

RSM-1XX-XX-XXX-D-XX  
SHEET 2 OF 2