

FEATURES AND SPECIFICATIONS

Features and Benefits

- Sizes 4 to 25 circuits
- Positive latch retains clip to panel mount or 180° pocket headers
- Anti-entanglement/overstress ribs prevent discrete wires from catching under latch during harness manufacturing and storage
- Stacks 70066/70400D assemblies end-to-end to form a larger single row connector

Reference Information

UL File No.: E29179

CSA File No.: LR19980

Mates With: 70104, 70563, 70565, 70573 and 70575

Designed In: Inches

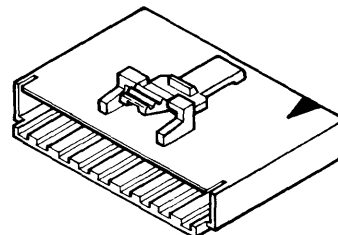
Physical

Housing: Black glass-filled polyester, UL 94V-0

Operating Temperature: -40 to +105°C

molex® **2.54mm (.100") Pitch**
SL™
Interim Clip

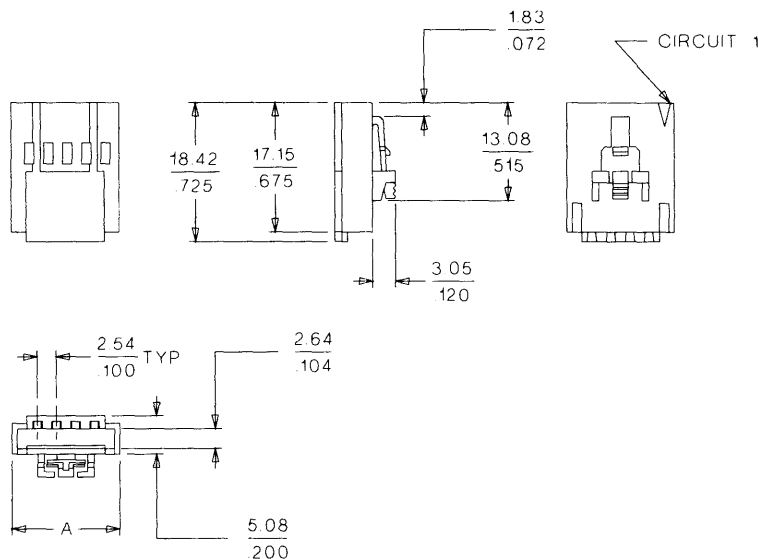
70004
Single Row
Modular Branch



2.54mm (.100") Pitch

CATALOG DRAWING (FOR REFERENCE ONLY)

Not For Use With Molex C-Grid III™ Components



ORDERING INFORMATION AND DIMENSIONS

Circuits	Order No.	Dimension
		A
4	• 15-04-5042	11.83 (.466)
5	• 15-04-5052	14.37 (.566)
6	• 15-04-5062	16.91 (.666)
7	• 15-04-5072	19.45 (.766)
8	• 15-04-5082	21.99 (.866)
9	• 15-04-5092	24.53 (.966)
10	• 15-04-5102	27.07 (1.066)
11	• 15-04-5112	29.61 (1.166)
12	• 15-04-5122	32.15 (1.266)
13	• 15-04-5132	34.69 (1.366)
14	• 15-04-5142	37.23 (1.466)

Circuits	Order No.	Dimension
		A
15	• 15-04-5152	39.77 (1.566)
16	• 15-04-5162	42.31 (1.666)
17	• 15-04-5172	44.85 (1.766)
18	• 15-04-5182	47.39 (1.866)
19	• 15-04-5192	49.93 (1.966)
20	• 15-04-5202	52.47 (2.066)
21	• 15-04-5212	55.01 (2.166)
22	• 15-04-5222	57.55 (2.266)
23	• 15-04-5232	60.09 (2.366)
24	• 15-04-5242	62.63 (2.466)
25	• 15-04-5252	65.17 (2.566)

• US Standard Product, available through Molex Franchised distributors