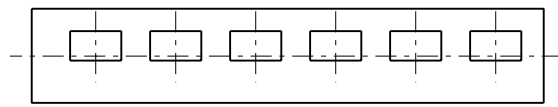
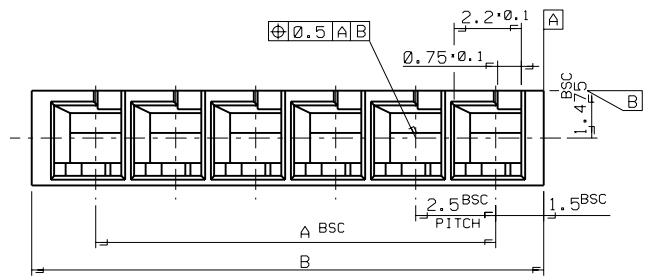
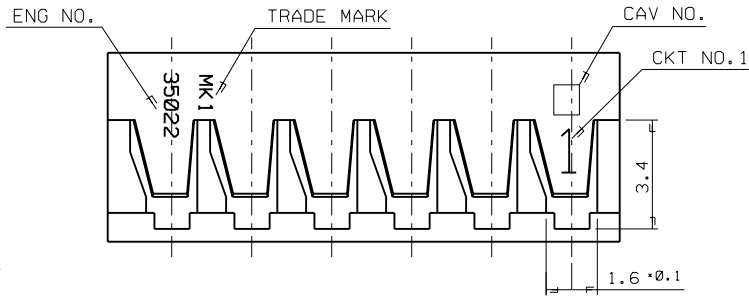
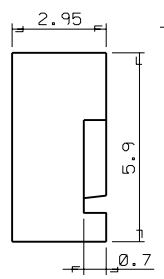
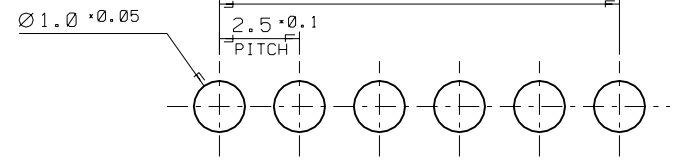
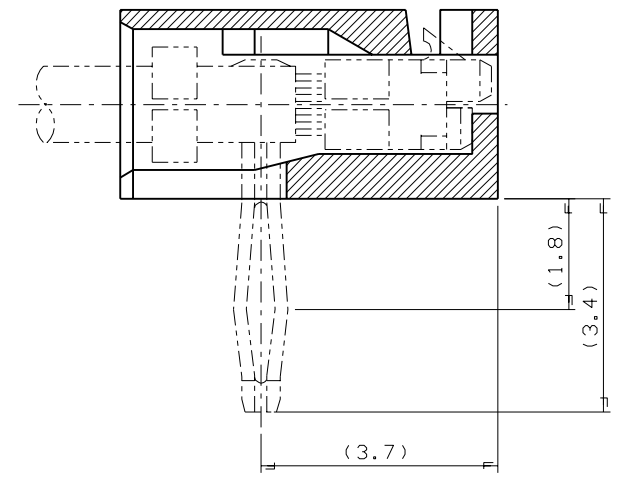


PROJECT NO. SIMILAR ITEM EDP NO. 35022-00\*\* ENG. NO. SD 35022-00\*\*



NOTE  
 1. MATERIAL : NYLON 66 UL94V-0  
 2. APPLIED TERMINAL : 35021-1001/1101



P.C. BOARD LAY OUT  
(THK. : 1.6T)

B	A	ENG NO.	CKT NO.	B	A	ENG NO.	CKT NO.
41.0	37.5	35022-0016	16	23.5	20.0	-0009	9
38.5	35.0	-0015	15	21.0	17.5	-0008	8
36.0	32.5	-0014	14	18.5	15.0	-0007	7
33.5	30.0	-0013	13	16.0	12.5	-0006	6
31.0	27.5	-0012	12	13.5	10.0	-0005	5
28.5	25.0	-0011	11	11.0	7.5	-0004	4
26.0	22.5	-0010	10	8.5	5.0	-0003	3
				6.0	2.5	35022-0002	2

				MATERIAL NYLON 66 UL94V-0		molex MOLEX-KOREA CO.,LTD.	
				GENERAL TOLERANCE DIMENSION : 0.3		DRAWN BY HSSHIN	
				ANGLE : 1°		CHK'D BY	
G	REVISED	96-019	96-2/14	DIMENSION CLASSIFICATION ▽ : CRITICAL ▼ : MAJOR ( ) : REFERENCE		APP'D BY	
F	REDRAWING	93-021	93-10/26	ASS'Y PART		SCALE 7-1	
LTR	REVISION RECORD	ECN	DATE	DESCRIPTION ENG. NO.		TITLE: 2.5MM PITCH R/A B-IN CONNECTOR HOUSING	
REVISE ONLY ON CAD SYSTEM						SHEET 10F1	
						ENG. NO. SD 35022-00**	
						REV G	