

## LP379THR1-C0G

### Applications

Advertising signs  
Indicators  
Message board

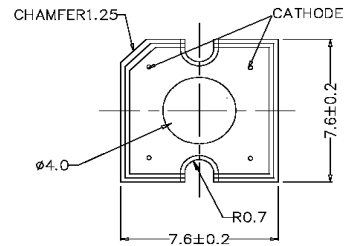
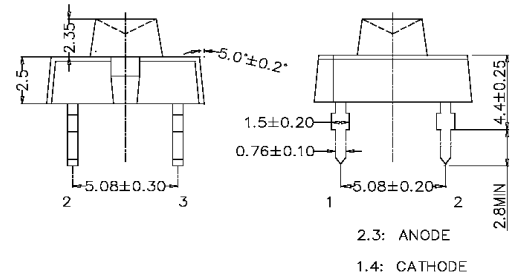
### Maximum Ratings (Ta=25°C)

Characteristic	Symbol	Max.	Unit
Forward Current	I <sub>F</sub>	70	mA
Reverse Voltage	V <sub>R</sub>	5	V
Power Dissipation	P <sub>D</sub>	220.00	mW
Operating Temperature	T <sub>opr</sub>	-40 ~ +100	°C
Storage Temperature	T <sub>stg</sub>	-40 ~ +100	°C
Soldering Temperature	T <sub>sol</sub>	260	°C
Soldering Time	-	for 5 sec. max	-

### Opto-Electrical Characteristics (Ta=25°C)

Characteristic	Symbol	Test Condition	Min	Typ	Max	Unit
Forward Voltage	V <sub>F</sub>	I <sub>F</sub> =70mA	-	2.60	3.20	V
Reverse Current	I <sub>R</sub>	V <sub>R</sub> =5V	-	-	100	μA
Luminous Intensity	I <sub>v</sub>	I <sub>F</sub> =70mA	3000.00	4000.00	-	mcd
Viewing Angle	2θ <sup>1/2</sup>	-	-	120°	-	deg.
Peak Wavelength	λ <sub>p</sub>	I <sub>F</sub> =70mA	-	639	-	nm
Dominant Wavelength	λ <sub>d</sub>	I <sub>F</sub> =70mA	-	628	-	nm
Spectral Line Half Width	Δλ	I <sub>F</sub> =70mA	-	23	-	nm

Specifications are subject to change without notice.



- NOTES: 1. ALL DIMENSIONS ARE IN mm TOLERANCE IS ±0.25mm UNLESS OTHERWISE NOTED.  
2. AN EPOXY MENISCUS MAY EXTEND ABOUT 1.5mm DOWN THE LEADS.  
3. BURR AROUND BOTTOM OF EPOXY MAY BE 0.5 mm MAX.

## LP379THR1-C0G Graphs

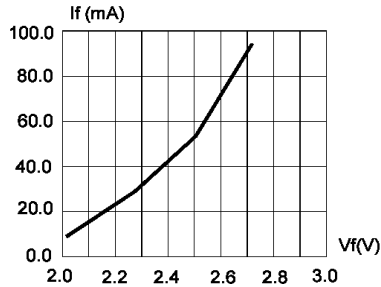


FIG.1 FORWARD CURRENT VS. FORWARD VOLTAGE.

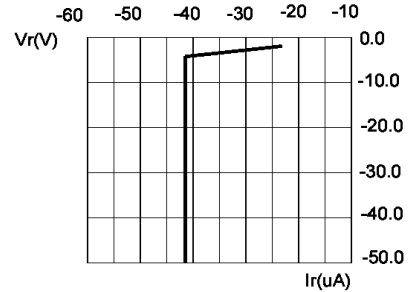


FIG.2 REVERSE CURRENT VS. REVERSE VOLTAGE.

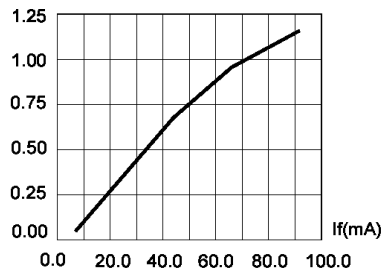


FIG.3 RELATIVE LUMINOUS FLUX VS. FORWARD CURRENT.

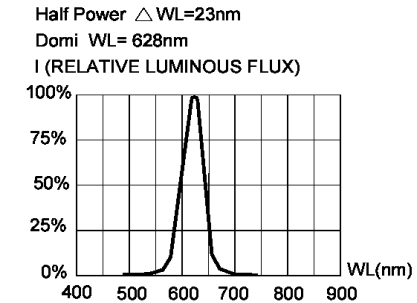


FIG.4 RELATIVE LUMINOUS FLUX VS. WAVELENGTH.

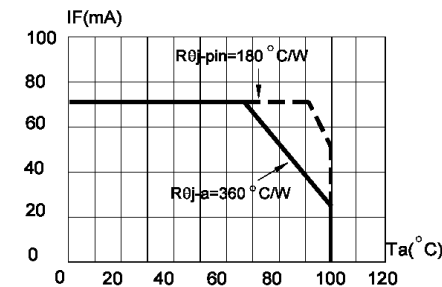


FIG.5 MAXIMUM FORWARD DC CURRENT VS AMBIENT TEMPERATURE (Tjmax=120°C)

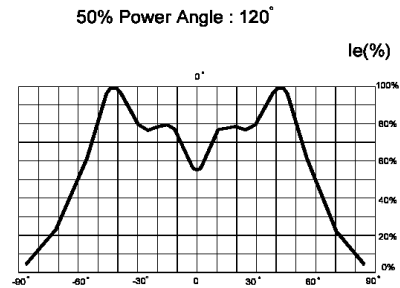


FIG.6 FAR FIELD PATTERN

1. Cathode PAD Area (0.18 X 0.18 X 2inch<sup>2</sup>)
2. Height above nominal seating plane in inches(0.3inch)