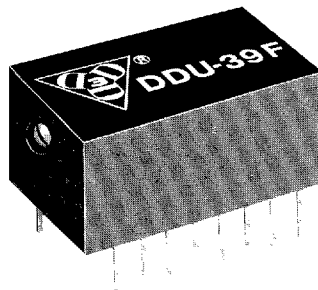


Digital Delay Units

SERIES: **DDU-39F**

Continuously Variable
TTL Interfaced

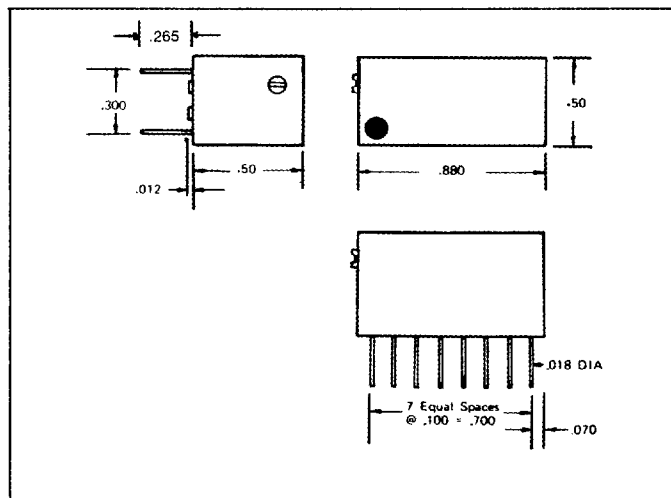


Features:

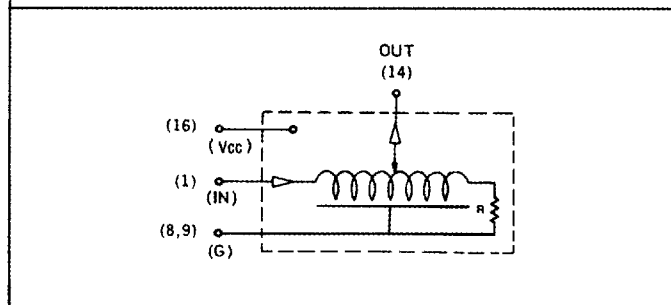
- Completely interfaced with TTL.
- 0.5 ns adjustment resolution.
- Fits standard 16 pin DIP sockets.

Specifications:

- Temperature coefficient: 220 PPM/°C.
- Rise-Time: 4 ns typically.
- Temperature range: 0° C to 70° C standard.
(-55° C to +125° C on request)*
- Supply voltage: 5 Vdc ±5%.
- DC parameters: See TTL-Fast Schottky Logic Table on Page 6.



Part No.	Inherent Delay Typ.	Adjustment Range Typ.	Power Dissipation
DDU-39F	7 ns	7 ns to 25 ns	230 mw Max.



3 Mt. Prospect Avenue, Clifton, New Jersey 07013 ■ (201) 773-2299 ■ FAX (201) 773-9672

■ 2644382 0001019 479 ■ 20