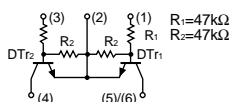
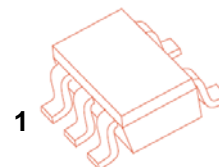


DIGITAL TRANSISTOR (NPN+NPN)

Features

Two DTC144E transistors are built-in a package.


SOT-353


MARKING: G2

Absolute maximum ratings(Ta=25°C)

| Parameter | Symbol | Limits | Unit |
|----------------------|---------------|-------------|------|
| Supply voltage | V_{CC} | 50 | V |
| Input voltage | V_{IN} | -10 to+40 | V |
| Output current | I_O | 30 | mA |
| | $I_{C(Max.)}$ | 100 | mA |
| Power dissipation | P_C | 150 | mW |
| Junction temperature | T_j | 150 | °C |
| Storage temperature | T_{stg} | -55 to+ 150 | °C |

Electrical characteristics (Ta=25°C)

| Parameter | Symbol | Min. | Typ | Max. | Unit | Conditions |
|----------------------|--------------|------|-----|------|------------|----------------------------------|
| Input voltage | $V_{I(off)}$ | | | 0.5 | V | $V_{CC}=5V, I_O=100\mu A$ |
| | $V_{I(on)}$ | 3 | | | | $V_O=0.3V, I_O=2mA$ |
| Output voltage | $V_{O(on)}$ | | | 0.3 | V | $I_O/I_I=10mA/0.5mA$ |
| Input current | I_I | | | 0.18 | mA | $V_I=5V$ |
| Output current | $I_{O(off)}$ | | | 0.5 | μA | $V_{CC}=50V, V_I=0$ |
| DC current gain | G_I | 68 | | | | $V_O=5V, I_O=5mA$ |
| Input resistance | R_1 | 32.9 | 47 | 61.1 | K Ω | |
| Resistance ratio | R_2/R_1 | 0.8 | 1 | 1.2 | | |
| Transition frequency | f_T | | 250 | | MHz | $V_{CE}=10V, I_E=-5mA, f=100MHz$ |