

New Jersey Semi-Conductor Products, Inc.

20 STERN AVE.
 SPRINGFIELD, NEW JERSEY 07081
 U.S.A.

TELEPHONE: (201) 376-2922
 (212) 227-6005
 FAX: (201) 376-8960

PARAMETERS

2N6174

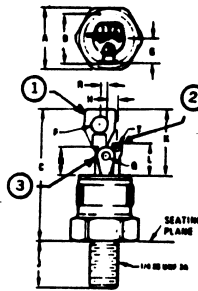
SCR, V(DRM) = 600 V TO 699.9 V

Description: SCR, V(DRM) = 600 V to 699.9 V

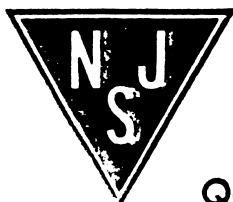
- Manufacturer.....
- Mil/High-Rel? (Y/N).....
- V(drm) Max..... 600
- I_t(stat) Max. (A)..... 117
- @Temp. (test) (x°C)..... 85#
- Supp Curr. I(TSM)..... 350%
- Firing Char-Igt Max..... 80
- Firing Char-Vgt Max..... 3.
- I_d(off) Max. (A)..... 5.0m
- @Temp. (test) (x°C)..... 100
- I(h) Max. (A)..... 90
- V(T) Max..... 1.8
- @I_t (A)..... 69
- Dv/Dt Worst Case.....
- t(switch) Off Typ. Time (S)... 1.5u
- @I_t (test) (A)..... 41
- t(switch) Off Typ. Time (S)...
- Oper. Temp (x°C) Min..... -40
- Oper. Temp (x°C) Max..... 100u
- Pkg Style.....
- Surface Mounted (Y/N)..... N

1 Junction Temperature # Case Temperature % @ above 125x°C 1 I_t (Average)
 2 I_t(rms) Measured at < 25x°C

SC87



	A	B	C	F	G	H	J	K	L	N	Q	R	T
SC87	.551	.501	1.03	.080	.255	.090	.470	.415	.305	.295	.135	.085	.055
	.550	.500	MAX	.085	MAX	REF	.455	MAX	MAX	.275	.150	REF	.085
SC87A	.551	.501	1.20	.140	.255	.085	.430	.670	.275	.255	.135	.060	.085
	.550	.500	MAX	MAX	MAX	.085	.465	MAX	.305	.275	.150	.070	.085
SC87B	.545	.501	1.200	.080		.090	.435		.350	.255	.135	.085	.085
	.563	.500	MAX	.165		REF	.465		MAX	.300	.150	REF	.085
SC87c	.551	.501	1.03	.085	.255	.085	.435	.415	.275	.255	.135	.085	.085
	.550	.500	MAX	.160	MAX	.085	.465	.415	.305	.275	.150	.070	.085



Quality Semi-Conductors