

T3/DS3/E3/STS-1 TRANSFORMERS

P/N:S3002 DATA SHEET

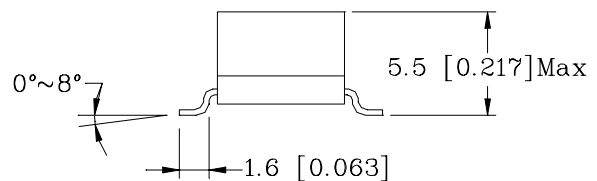
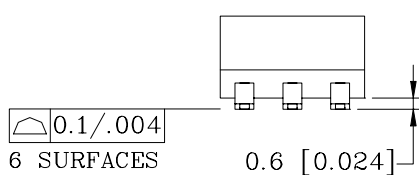
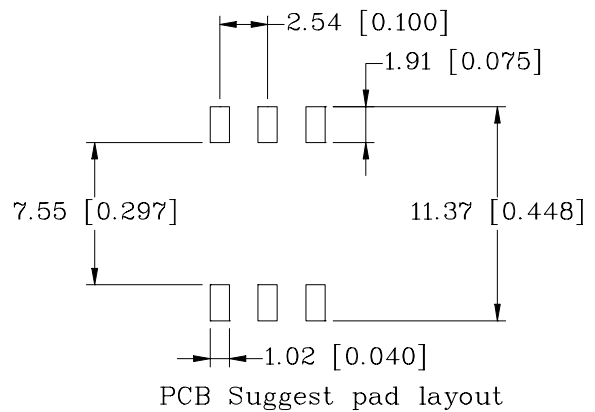
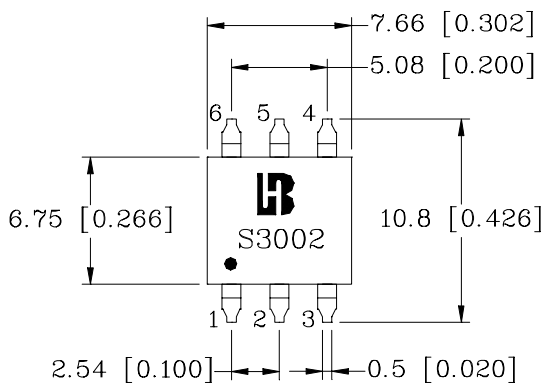
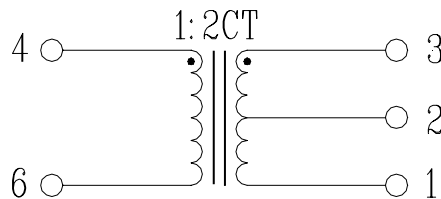
A. General Specifications

1. Models matched to leading transceiver ICs
2. Return loss meets requirements of G.703
3. Operating temperature of -40°C to +85°C
4. 1500Vrms Isolation

B. Electrical Specifications@25°C :

1. Turn Ratio(PRI:SEC±5%) : 1:2CT
2. PRI . OCL @25°C: 40 μ H Min @100KHz/0.2Vrms
3. PRI . OCL @-40°C: 19 μ H Min @100KHz/0.2Vrms
4. L.L : 0.11 μ H Max @100KHz/0.2V
5. Cw/w : 12 pF Max
6. PRI/SEC Isolation:1500Vrms
7. Bandwidth with 75 Ω system:0.25 MHz~500 MHz(Typ)
8. Primary Pins : 4-6

C. Schematics & Mechanical :



Dimensions: mm [Inches] Tolerances: ± 0.25 [0.01]