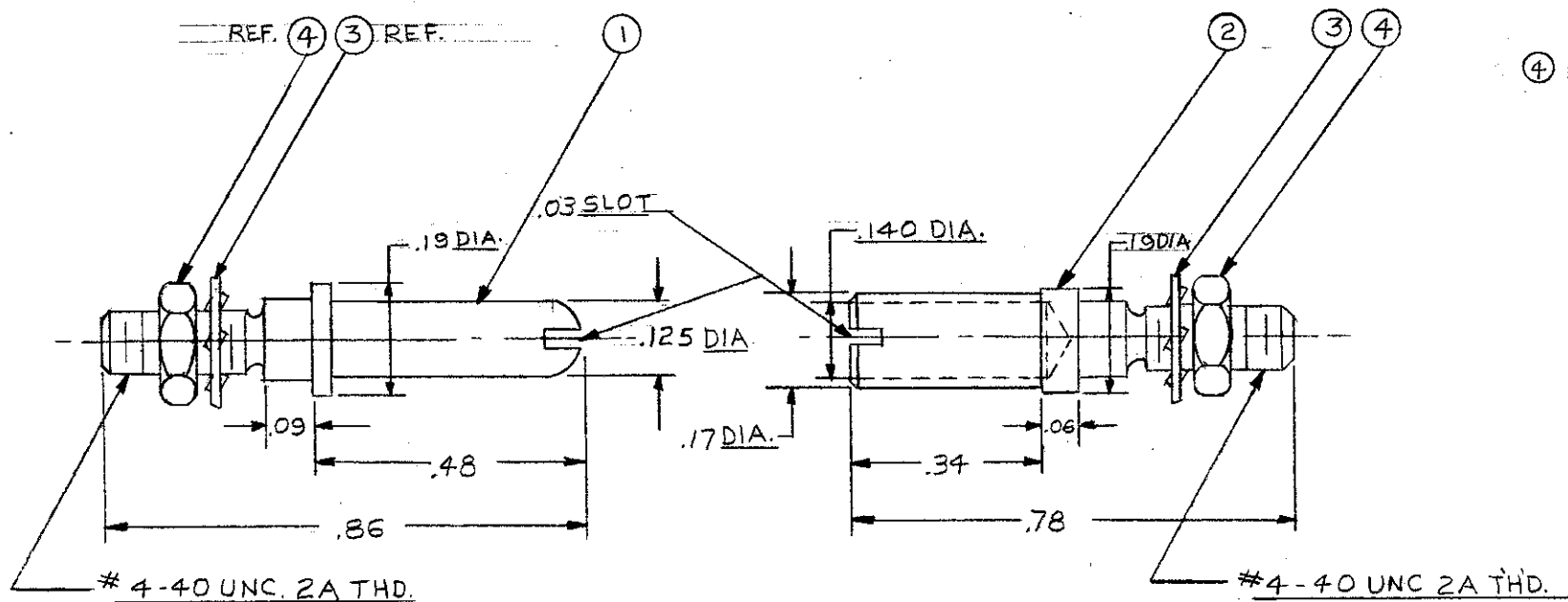


22664



- ① PIN-GUIDE, STAINLESS STEEL  
QQ-S-764, PASSIVATING DIP.
- ② SOCKET-GUIDE, STAINLESS STEEL  
QQ-S-764, PASSIVATING DIP.
- ③ LOCKWASHER, STAINLESS STEEL  
QQ-S-766, PASSIVATING DIP.
- ④ NUT-HEX, STAINLESS STEEL  
QQ-S-764, PASSIVATING DIP.

**NOTE:**  
 1. THESE GUIDE SETS FIT ALL MRA,  
 MRAC, MRE, & MRX 14-2 CONNECTORS  
 EXCEPT MRE 5-3 & MRE 8.

FORM 14A-ACB  
 This drawing, the designs and ideas embodied in the device to which it relates, and the methods of producing the device, are the property of Winchester Electronics, Inc. and shall not be employed, copied or used in any way without the consent of Winchester Electronics.

REV.	CHANGE	DATE
A	REDRAWN & UP-DATED PER S.O.P. EN/3443A	11-27-72 M.S.

**GENERAL NOTES UNLESS OTHERWISE SPECIFIED**

1. ALL DIMENSIONS ARE IN INCHES.
2. ALL DIMENSIONS ARE
3. REMOVE ALL BURRS TO .0005 MAX.
4. BREAK ALL SHARP EDGES EQ. TO .005 R. MAX.
5. .005 R. MAX. ON INSIDE CORNERS.
6. ALL DIAMETERS CONCENTRIC .0005 T.I.R. MAX.
7. ALL SURFACES TO BE SQUARE AND/OR PARALLEL WITHIN .0005 IN./IN.
8. GENERAL SURFACE FINISH TO BE MICROINCHES RMS. MAX. EN9794
9. TOLERANCES  
 .XX ±.02 FRACTIONS ±1/4  
 .XXX ±.007 ANGLES ±2°
10. WEIGHT

TITLE OUTLINE-ASS'Y. NSS 700, GUIDE SET			
MATERIAL			
FINISH			
SCALE 4:1	DR. D'AMICO DATE 6-17-63	CRD. E. ERICSSON DATE 6-18-63	APP. F.K.G. DATE 6-21-63
WINCHESTER ELECTRONICS DIVISION OF LITTON PRECISION PRODUCTS INC. OAKVILLE, CONNECTICUT			
DWG. SIZE B	22664		REV. A

SCANNED