

# NC7SZ74

## TinyLogic® UHS D-Type, Flip-Flop with Preset and Clear

### Features

- Ultra-High Speed:  $t_{PD}$  2.6ns (Typical) into 50pF at 5V  $V_{CC}$
- High Output Drive:  $\pm 24mA$  at 3V  $V_{CC}$
- Broad  $V_{CC}$  Operating Range: 1.65V to 5.5V
- Power Down High-Impedance Inputs/Outputs
- Over-Voltage Tolerance Inputs Facilitate 5V to 3V Translation
- Proprietary Noise/EMI Reduction Circuitry
- Ultra-Small MicroPak™ Package
- Space-Saving US8 Surface Mount Package

### Description

The NC7SZ74 is a single, D-type, CMOS flip-flop with preset and clear from Fairchild's ultra high-speed series of TinyLogic®. The device is fabricated with advanced CMOS technology to achieve ultra high speed with high output drive, while maintaining low static power dissipation over a very broad  $V_{CC}$  operating range of 1.65V to 5.5V  $V_{CC}$ . The inputs and outputs are high impedance when  $V_{CC}$  is 0V. Inputs tolerate voltages up to 7V, independent of  $V_{CC}$  operating voltage.

The signal level applied to the D input is transferred to the Q output during the positive-going transition of the CLK pulse.

### Ordering Information

Part Number	Top Mark	Package	Packing Method
NC7SZ74K8X	SZ74	8-Lead US8, JEDEC MO-187, Variation CA 3.1mm Wide-	3000 Units on Tape & Reel
NC7SZ74L8X	N9	8-Lead MicroPak, 1.6 mm Wide	5000 Units on Tape & Reel

## Connection Diagrams

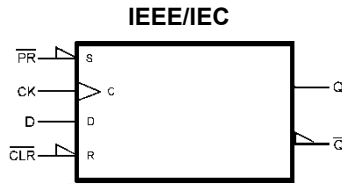


Figure 1. Logic Symbol

## Pin Configurations

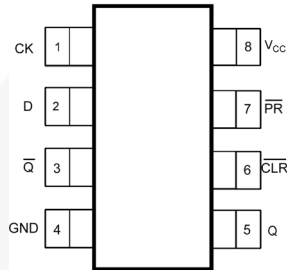


Figure 2. US8 (Top View)

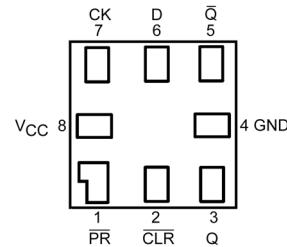


Figure 3. MicroPak™ (Top Through View)

## Pin Definitions

Pin # US8	Pin # MicroPak	Name	Description
1	7	CK	Clock Pulse Input
2	6	D	Data Input
3	5	/Q	Flip-Flop Output
4	4	GND	Ground
5	3	Q	Flip-Flop Output
6	2	/CLR	Direct Clear Input
7	1	/PR	Direct Preset Input
8	8	V <sub>CC</sub>	Supply Voltage

## Function Table

Inputs				Output		Function
/CLR	/PR	D	CK	Q	/Q	
L	H	X	X	L	H	Clear
H	L	X	X	H	L	Preset
L	L	X	X	H	H	
H	H	L	↑	L	H	
H	H	H	↑	H	L	
H	H	X	↓	Q <sub>n</sub>	/Q <sub>n</sub>	No Change

H = HIGH Logic Level

L = LOW Logic Level

Q<sub>n</sub> = No change in data

Z = High Impedance

X = Immaterial

↑ = Rising Edge

↓ = Falling Edge

## Absolute Maximum Ratings

Stresses exceeding the absolute maximum ratings may damage the device. The device may not function or be operable above the recommended operating conditions and stressing the parts to these levels is not recommended. In addition, extended exposure to stresses above the recommended operating conditions may affect device reliability. The absolute maximum ratings are stress ratings only.

Symbol	Parameter	Min.	Max.	Unit
$V_{CC}$	Supply Voltage	-0.5	7.0	V
$V_{IN}$	DC Input Voltage	-0.5	7.0	V
$V_{OUT}$	DC Output Voltage	-0.5	7.0	V
$I_{IK}$	DC Input Diode Current	$V_{IN} < 0V$	-50	mA
$I_{OK}$	DC Output Diode Current	$V_{OUT} < 0V$	-50	mA
$I_{OUT}$	DC Output Source/Sink Current		±50	mA
$I_{CC}$ or $I_{GND}$	DC $V_{CC}$ or Ground Current		±50	mA
$T_{STG}$	Storage Temperature Range	-65	+150	°C
$T_J$	Junction Temperature Under Bias		+150	°C
$T_L$	Junction Lead Temperature (Soldering, 10 Seconds)		+260	°C
$P_D$	Power Dissipation at +85°C		250	mW
ESD	Human Body Model, JEDEC:JESD22-A114		5000	V
	Charge Device Model: JEDEC:JESD22-C101		2000	

## Recommended Operating Conditions

The Recommended Operating Conditions table defines the conditions for actual device operation. Recommended operating conditions are specified to ensure optimal performance to the datasheet specifications. Fairchild does not recommend exceeding them or designing to Absolute Maximum Ratings.

Symbol	Parameter	Conditions	Min.	Max.	Unit
$V_{CC}$	Supply Voltage Operating		1.65	5.50	V
	Supply Voltage Data Retention		1.50	5.50	
$V_{IN}$	Input Voltage		0	5.5	V
$V_{OUT}$	Output Voltage	Active State	0	$V_{CC}$	V
		3-State	0	5.5	
$t_r, t_f$	Input Rise and Fall Times	$V_{CC}=1.8V, 2.5V \pm 0.2V$	0	20	ns/V
		$V_{CC}=3.3V \pm 0.3V$	0	10	
		$V_{CC}=5.0V \pm 0.5V$	0	5	
$T_A$	Operating Temperature		-40	+85	°C
$\theta_{JA}$	Thermal Resistance	US8		250	°C/W
		MicroPak™-8		280	

**Note:**

- Unused inputs must be held HIGH or LOW. They may not float.

### DC Electrical Characteristics

Symbol	Parameter	V <sub>CC</sub>	Conditions	T <sub>A</sub> =+25°C			T <sub>A</sub> =-40 to +85°C		Units
				Min.	Typ.	Max.	Min.	Max.	
V <sub>IH</sub>	HIGH Level Control Input Voltage	1.65 to 1.95		0.75V <sub>CC</sub>			0.75V <sub>CC</sub>		V
		2.30 to 5.50		0.70V <sub>CC</sub>			0.70V <sub>CC</sub>		
V <sub>IL</sub>	LOW Level Control Input Voltage	1.65 to 1.95				0.25V <sub>CC</sub>		0.25V <sub>CC</sub>	V
		2.30 to 5.50				0.30V <sub>CC</sub>		0.30V <sub>CC</sub>	
V <sub>OH</sub>	HIGH Level Output Voltage	1.65	V <sub>IN</sub> =V <sub>IH</sub> , I <sub>OH</sub> =-100μA	1.55	1.65		1.55		V
		2.30		2.20	2.30		2.20		
		3.00		2.90	3.00		2.90		
		4.50		4.40	4.50		4.40		
		1.65	I <sub>OH</sub> =-4mA	1.29	1.52		1.29		
		2.30	I <sub>OH</sub> =-8mA	1.90	2.15		1.90		
		3.00	I <sub>OH</sub> =-16mA	2.40	2.80		2.40		
		3.00	I <sub>OH</sub> =-24mA	2.30	2.68		2.30		
		4.50	I <sub>OH</sub> =-32mA	3.80	4.20		3.80		
V <sub>OL</sub>	LOW Level Control Output Voltage	1.65	V <sub>IN</sub> =V <sub>IH</sub> , I <sub>OL</sub> =100μA			0.10		0.10	V
		2.30				0.10		0.10	
		3.00				0.10		0.10	
		4.50				0.10		0.10	
		1.65	I <sub>OL</sub> =4mA		0.80	0.24		0.24	
		2.30	I <sub>OL</sub> =8mA		0.10	0.30		0.30	
		3.00	I <sub>OL</sub> =16mA		0.15	0.40		0.40	
		3.00	I <sub>OL</sub> =24mA		0.22	0.55		0.55	
		4.50	I <sub>OL</sub> =32mA		0.22	0.55		0.55	
I <sub>IN</sub>	Input Leakage Current	0 to 5.5	0 ≤ V <sub>IN</sub> ≤ 5.5V			±0.1		±1.0	μA
I <sub>OFF</sub>	Power Off Leakage Current	0	V <sub>IN</sub> or V <sub>OUT</sub> =5.5V			1		10	μA
I <sub>CC</sub>	Quiescent Supply Current	1.65 to 5.50	V <sub>IN</sub> =5.5V, GND			1		10	μA

### AC Electrical Characteristics

Symbol	Parameter	V <sub>CC</sub>	Conditions	T <sub>A</sub> =+25°C			T <sub>A</sub> =-40 to +85°C		Units	Figure
				Min.	Typ.	Max.	Min.	Max.		
f <sub>MAX</sub>	Maximum Clock Frequency	1.80 ± 0.15	C <sub>L</sub> =15pF R <sub>D</sub> =1MΩ S <sub>I</sub> =Open	75			75		ns	Figure 4 Figure 8
		2.50 ± 0.20		150			150			
		3.30 ± 0.30		200			200			
		5.00 ± 0.50		250			250			
		3.30 ± 0.50	C <sub>L</sub> =50pF R <sub>D</sub> =500Ω, S <sub>I</sub> =Open	175			175			
		5.00 ± 0.50		200			200			
t <sub>PLH</sub> , t <sub>PHL</sub>	Propagation Delay CK to Q, /Q	1.80 ± 0.15	C <sub>L</sub> =15pF, R <sub>D</sub> =1MΩ S <sub>I</sub> =Open	2.5	6.5	12.5	2.5	13.0	ns	Figure 4 Figure 6
		2.50 ± 0.20		1.5	3.8	7.5	1.5	8.0		
		3.30 ± 0.30		1.0	2.8	6.5	1.0	7.0		
		5.00 ± 0.50		0.8	2.2	4.5	0.8	5.0		
		3.30 ± 0.30	C <sub>L</sub> =50pF R <sub>D</sub> =500Ω, S <sub>I</sub> =Open	1.0	3.4	7.0	1.0	7.5		
		5.00 ± 0.50		1.0	2.6	5.0	1.0	5.5		
t <sub>PLH</sub> , t <sub>PHL</sub>	Propagation Delay /CLR, /PR to Q, /Q	1.80 ± 0.15	C <sub>L</sub> =15pF, R <sub>L</sub> =1MΩ S <sub>I</sub> =Open	2.5	6.5	14.0	2.5	14.5	ns	Figure 4 Figure 6
		2.50 ± 0.20		1.5	3.8	9.0	1.5	9.5		
		3.30 ± 0.30		1.0	2.8	6.5	1.0	7.0		
		5.00 ± 0.50		0.8	2.2	5.0	0.8	5.5		
		3.30 ± 0.30	C <sub>L</sub> =50pF, R <sub>D</sub> =500Ω, S <sub>I</sub> =Open	1.0	3.4	7.0	1.0	7.5		
		5.00 ± 0.50		1.0	2.6	5.0	1.0	5.5		
t <sub>S</sub>	Setup Time CK to D	1.80 ± 0.15	C <sub>L</sub> =15pF, R <sub>L</sub> =1MΩ S <sub>I</sub> =Open	6.5			6.5		ns	Figure 4 Figure 7
		2.50 ± 0.20		3.5			3.5			
		3.30 ± 0.30		2.0			2.0			
		5.00 ± 0.50		1.5			1.5			
		3.30 ± 0.30	C <sub>L</sub> =50pF, R <sub>D</sub> =500Ω, S <sub>I</sub> =Open	2.0			2.0			
		5.00 ± 0.50		1.5			1.5			
t <sub>H</sub>	Hold Time, CK to D	1.80 ± 0.15	C <sub>L</sub> =15pF, R <sub>L</sub> =1MΩ S <sub>I</sub> =Open	0.5			0.5		ns	Figure 4 Figure 7
		2.50 ± 0.20		0.5			0.5			
		3.30 ± 0.30		0.5			0.5			
		5.00 ± 0.50		0.5			0.5			
		3.30 ± 0.30	C <sub>L</sub> =50pF, R <sub>D</sub> =500Ω, S <sub>I</sub> =Open	0.5			0.5			
		5.00 ± 0.50		0.5			0.5			
t <sub>w</sub>	Pulse Width, CK, /PR, /CLR	1.80 ± 0.15	C <sub>L</sub> =15pF, R <sub>L</sub> =1MΩ S <sub>I</sub> =Open	6.0			6.0		ns	Figure 4 Figure 8
		2.50 ± 0.20		4.0			4.0			
		3.30 ± 0.30		3.0			3.0			
		5.00 ± 0.50		2.0			2.0			
		3.30 ± 0.30	C <sub>L</sub> =50pF, R <sub>D</sub> =500Ω, S <sub>I</sub> =Open	3.0			3.0			
		5.00 ± 0.50		2.0			2.0			
t <sub>REC</sub>	Recover Time /CLR, /PR to CK	1.80 ± 0.15	C <sub>L</sub> =15pF, R <sub>L</sub> =1MΩ S <sub>I</sub> =Open	8.0			8.0		ns	Figure 4 Figure 7
		2.50 ± 0.20		4.5			4.5			
		3.30 ± 0.30		3.0			3.0			
		5.00 ± 0.50		3.0			3.0			
		3.30 ± 0.30	C <sub>L</sub> =50pF, R <sub>D</sub> =500Ω, S <sub>I</sub> =Open	3.0			3.0			
		5.00 ± 0.50		3.0			3.0			

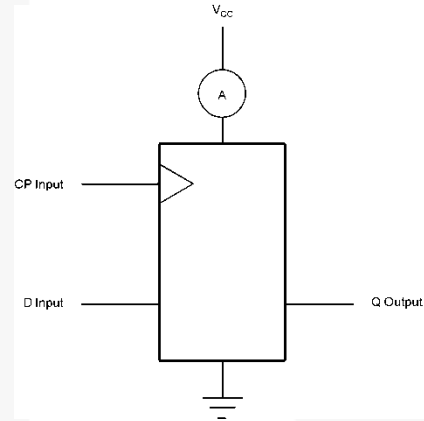
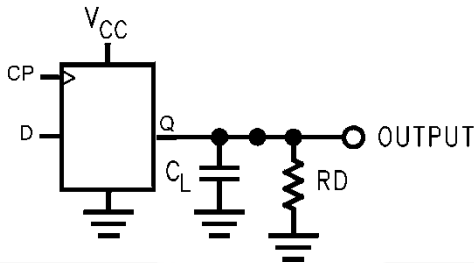
Continued on the following page...

## AC Electrical Characteristics

Symbol	Parameter	V <sub>CC</sub>	Conditions	T <sub>A</sub> =+25°C		T <sub>A</sub> =-40 to +85°C			Units	Figure
				Min.	Typ.	Min.	Typ.	Min.		
C <sub>IN</sub>	Input Capacitance	0			3				pF	
C <sub>OUT</sub>	Output Capacitance	0			4				pF	
C <sub>PD</sub>	Power Dissipation Capacitance <sup>(2)</sup>	3.30			10				pF	
		5.00			12					

**Note:**

2. C<sub>PD</sub> is defined as the value of the internal equivalent capacitance which is derived from dynamic operating current consumption (I<sub>CCD</sub>) at no output loading and operating at 50% duty cycle. C<sub>PD</sub> is related to I<sub>CCD</sub> dynamic operating current by the expression:  $I_{CCD} = (C_{PD})(V_{CC})(f_{IN}) + (I_{CCstatic})$ .



**Note:**

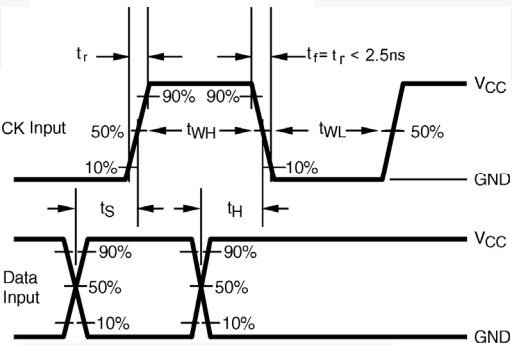
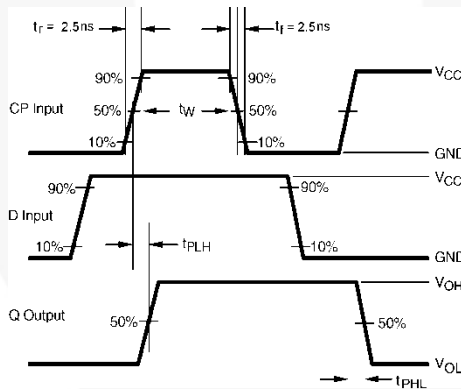
3. C<sub>L</sub> includes load and stray capacitance. Input PRR=1.0MHz t<sub>w</sub>=500ns.

**Notes:**

4. CP input=AC Waveforms t<sub>r</sub>=t<sub>f</sub>=2.5ns.  
 5. CP input PRR=10MHz; Duty Cycle=50%.  
 6. D input PRR=5MHz; Duty Cycle=50%.

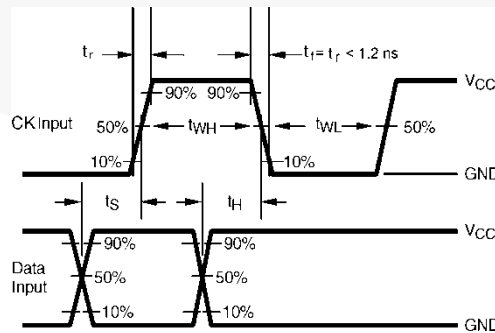
**Figure 4. AC Test Circuit**

**Figure 5. I<sub>CCD</sub> Test Circuit**



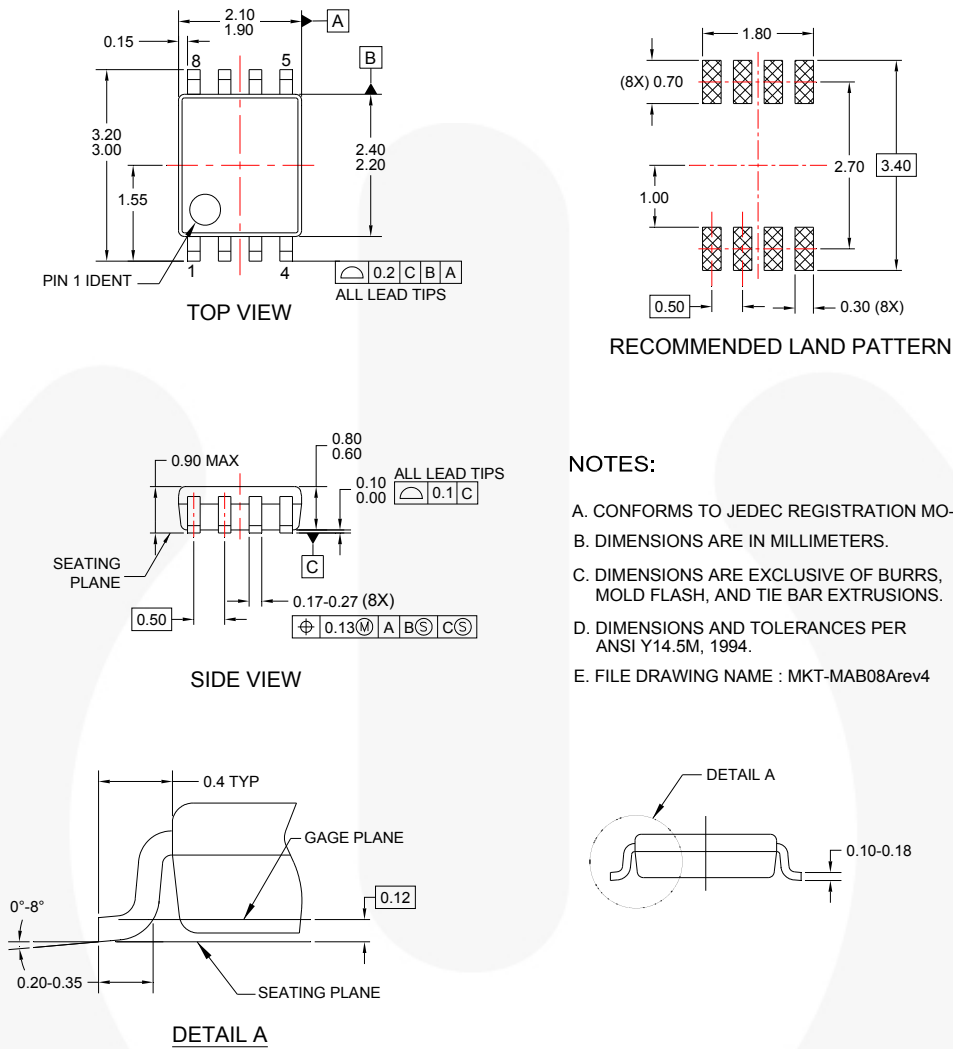
**Figure 6. AC Waveforms**

**Figure 7. AC Waveforms**



**Figure 8. AC Waveforms**

## Physical Dimensions



### NOTES:

- A. CONFORMS TO JEDEC REGISTRATION MO-187
- B. DIMENSIONS ARE IN MILLIMETERS.
- C. DIMENSIONS ARE EXCLUSIVE OF BURRS, MOLD FLASH, AND TIE BAR EXTRUSIONS.
- D. DIMENSIONS AND TOLERANCES PER ANSI Y14.5M, 1994.
- E. FILE DRAWING NAME : MKT-MAB08Arev4

**Figure 9. 8-Lead US8, JEDEC MO-187, Variation CA 3.1mm Wide**

Package drawings are provided as a service to customers considering Fairchild components. Drawings may change in any manner without notice. Please note the revision and/or date on the drawing and contact a Fairchild Semiconductor representative to verify or obtain the most recent revision. Package specifications do not expand the terms of Fairchild's worldwide terms and conditions, specifically the warranty therein, which covers Fairchild products.

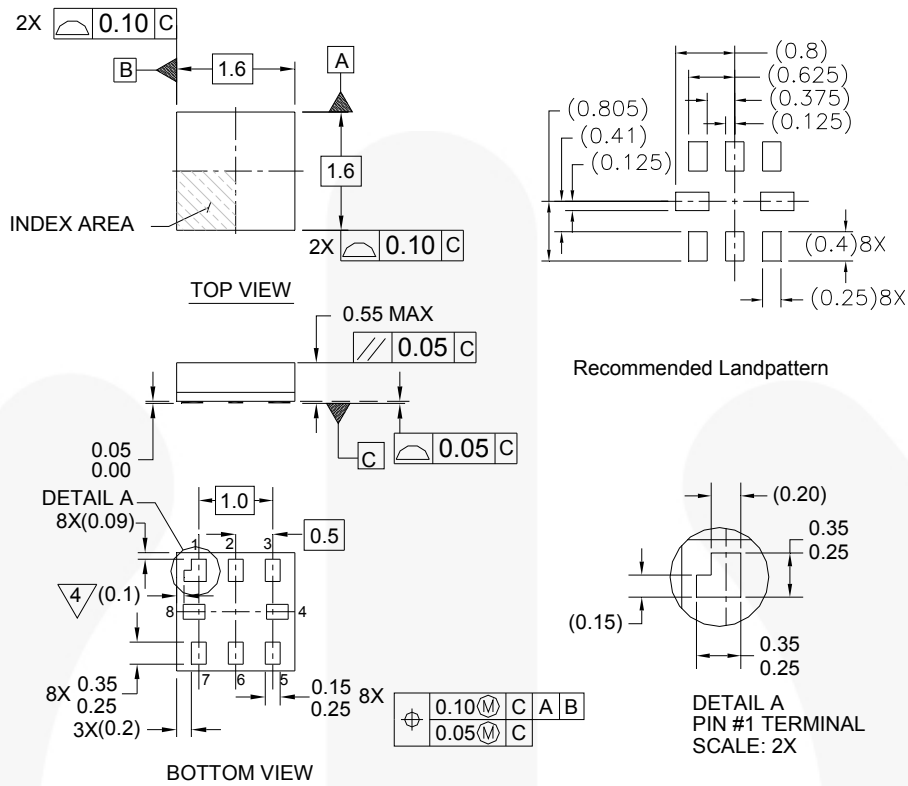
Always visit Fairchild Semiconductor's online packaging area for the most recent package drawings:  
<http://www.fairchildsemi.com/packaging/>.

## Tape and Reel Specifications

Please visit Fairchild Semiconductor's online packaging area for the most recent tape and reel specifications:  
[http://www.fairchildsemi.com/products/analog/pdf/sc70-5\\_tr.pdf](http://www.fairchildsemi.com/products/analog/pdf/sc70-5_tr.pdf).

Package Designator	Tape Section	Cavity Number	Cavity Status	Cover Type Status
K8X	Leader (Start End)	125 (Typical)	Empty	Sealed
	Carrier	3000	Filled	Sealed
	Trailer (Hub End)	75 (Typical)	Empty	Sealed

## Physical Dimensions



**Notes:**

1. PACKAGE CONFORMS TO JEDEC MO-255 VARIATION UAAD
2. DIMENSIONS ARE IN MILLIMETERS
3. DRAWING CONFORMS TO ASME Y.14M-1994
4. PIN 1 FLAG, END OF PACKAGE OFFSET
5. DRAWING FILE NAME: MKT-MAC08AREV4

MAC08AREV4

**Figure 10.8-Lead, MicroPak™, 1.6mm Wide**

Package drawings are provided as a service to customers considering Fairchild components. Drawings may change in any manner without notice. Please note the revision and/or date on the drawing and contact a Fairchild Semiconductor representative to verify or obtain the most recent revision. Package specifications do not expand the terms of Fairchild's worldwide terms and conditions, specifically the warranty therein, which covers Fairchild products.

Always visit Fairchild Semiconductor's online packaging area for the most recent package drawings:  
<http://www.fairchildsemi.com/packaging/>

## Tape and Reel Specifications

Please visit Fairchild Semiconductor's online packaging area for the most recent tape and reel specifications:  
[http://www.fairchildsemi.com/products/logic/pdf/micropak\\_tr.pdf](http://www.fairchildsemi.com/products/logic/pdf/micropak_tr.pdf)

Package Designator	Tape Section	Cavity Number	Cavity Status	Cover Type Status
L8X	Leader (Start End)	125 (Typical)	Empty	Sealed
	Carrier	5000	Filled	Sealed
	Trailer (Hub End)	75 (Typical)	Empty	Sealed




**TRADEMARKS**

The following includes registered and unregistered trademarks and service marks, owned by Fairchild Semiconductor and/or its global subsidiaries, and is not intended to be an exhaustive list of all such trademarks.

2Cool™	FlashWriter®x		Sync-Lock™
AccuPower™	FPST™		SYSTEM GENERAL®x
Auto-SPM™	F-PFET™	PDP SPM™	The Power Franchise®
AX-CAP™	FRFET™	Power-SPM™	
BitSiC®	Global Power Resource SM	PowerTrench®	TinyBoost™
Build it Now™	Green FPS™	PowerXS™	TinyBuck™
CorePLUS™	Green FPS™ e-Series™	Programmable Active Droop™	TinyCalc™
CorePOWER™	Gmax™	QFET®	TinyLogic®
CROSSVOLT™	GTO™	QST™	TINYOPTO™
CTL™	IntelliMAX™	Quiet Series™	TinyPower™
Current Transfer Logic™	ISOPLANAR™	RapidConfigure™	TinyPVM™
DEUXPEED®	Making Small Speakers Sound Louder and Better™		TinyWire™
Dual Cool™	MegaBuck™	Saving our world, 1mW/W/kW at a time™	TranSiC®
EcoSPARK®	MICROCOUPLER™	SignalWise™	TriFault Detect™
EfficientMax™	MicroFET™	SmartMax™	TRUECURRENT®x
ESBC™	MicroPak™	SMART START™	µSerDes™
	MicroPak2™	Solutions for Your Success™	
Fairchild®	MillerDrive™	SPM®	UHC®
Fairchild Semiconductor®	MotionMax™	STEALTH™	Ultra FRFET™
FACT Quiet Series™	Motion-SPM™	SuperFET®	UniFET™
FACT®	mWSaver™	SuperSOT™.3	Vcx™
FAST®	OptoHit™	SuperSOT™.6	VisualMax™
FastvCore™	OPTOLOGIC®	SuperSOT™.8	XS™
FETBench™	OPTOPLANAR®	SupreM OS®	
		SyncFET™	

\* Trademarks of System General Corporation, used under license by Fairchild Semiconductor.

**DISCLAIMER**

FAIRCHILD SEMICONDUCTOR RESERVES THE RIGHT TO MAKE CHANGES WITHOUT FURTHER NOTICE TO ANY PRODUCTS HEREIN TO IMPROVE RELIABILITY, FUNCTION, OR DESIGN. FAIRCHILD DOES NOT ASSUME ANY LIABILITY ARISING OUT OF THE APPLICATION OR USE OF ANY PRODUCT OR CIRCUIT DESCRIBED HEREIN; NEITHER DOES IT CONVEY ANY LICENSE UNDER ITS PATENT RIGHTS, NOR THE RIGHTS OF OTHERS. THESE SPECIFICATIONS DO NOT EXPAND THE TERMS OF FAIRCHILD'S WORLDWIDE TERMS AND CONDITIONS, SPECIFICALLY THE WARRANTY THEREIN, WHICH COVERS THESE PRODUCTS.

**LIFE SUPPORT POLICY**

FAIRCHILD'S PRODUCTS ARE NOT AUTHORIZED FOR USE AS CRITICAL COMPONENTS IN LIFE SUPPORT DEVICES OR SYSTEMS WITHOUT THE EXPRESS WRITTEN APPROVAL OF FAIRCHILD SEMICONDUCTOR CORPORATION.

As used herein:

1. Life support devices or systems are devices or systems which, (a) are intended for surgical implant into the body or (b) support or sustain life, and (c) whose failure to perform when properly used in accordance with instructions for use provided in the labeling, can be reasonably expected to result in a significant injury of the user.
2. A critical component in any component of a life support, device, or system whose failure to perform can be reasonably expected to cause the failure of the life support device or system, or to affect its safety or effectiveness.

**ANTI-COUNTERFEITING POLICY**

Fairchild Semiconductor Corporation's Anti-Counterfeiting Policy. Fairchild's Anti-Counterfeiting Policy is also stated on our external website, [www.fairchildsemi.com](http://www.fairchildsemi.com), under Sales Support.

Counterfeiting of semiconductor parts is a growing problem in the industry. All manufacturers of semiconductor products are experiencing counterfeiting of their parts. Customers who inadvertently purchase counterfeit parts experience many problems such as loss of brand reputation, substandard performance, failed applications, and increased cost of production and manufacturing delays. Fairchild is taking strong measures to protect ourselves and our customers from the proliferation of counterfeit parts. Fairchild strongly encourages customers to purchase Fairchild parts either directly from Fairchild or from Authorized Fairchild Distributors who are listed by country on our web page cited above. Products customers buy either from Fairchild directly or from Authorized Fairchild Distributors are genuine parts, have full traceability, meet Fairchild's quality standards for handling and storage and provide access to Fairchild's full range of up-to-date technical and product information. Fairchild and our Authorized Distributors will stand behind all warranties and will appropriately address any warranty issues that may arise. Fairchild will not provide any warranty coverage or other assistance for parts bought from Unauthorized Sources. Fairchild is committed to combat this global problem and encourage our customers to do their part in stopping this practice by buying direct or from authorized distributors.

**PRODUCT STATUS DEFINITIONS**
**Definition of Terms**

Datasheet Identification	Product Status	Definition
Advance Information	Formative / In Design	Datasheet contains the design specifications for product development. Specifications may change in any manner without notice.
Preliminary	First Production	Datasheet contains preliminary data; supplementary data will be published at a later date. Fairchild Semiconductor reserves the right to make changes at any time without notice to improve design.
No Identification Needed	Full Production	Datasheet contains final specifications. Fairchild Semiconductor reserves the right to make changes at any time without notice to improve the design.
Obsolete	Not In Production	Datasheet contains specifications on a product that is discontinued by Fairchild Semiconductor. The datasheet is for reference information only.

Rev. I56