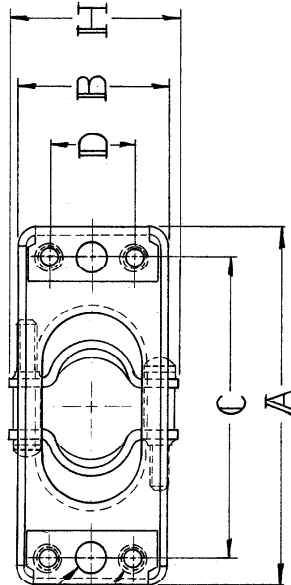
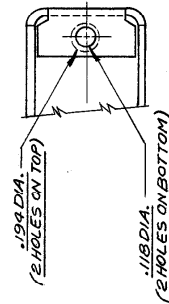


XMRE 34-0300X  
 XMRE 42-0300X  
 XMRE 50-0300X



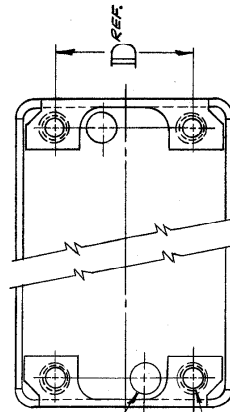
TAPPED HOLES  
 FOR #4-40 FIL. HD.  
 MOUNTING SCREWS.



.194 DIA.  
 (2 HOLES ON TOP)

.118 DIA.  
 (2 HOLES ON BOTTOM)

XMRE 7-0300X  
 XMRE 9-0300X  
 XMRE 14-0300X  
 XMRE 18-0300X  
 XMRE 20-0300X  
 XMRE 21-0300X  
 XMRE 26-0300X



.194 DIA.  
 (2 HOLES ON TOP)

TAPPED HOLES FOR #4-40  
 FIL. HD. MOUNTING SCREWS.

XMRE 75-0300X

WINCHESTER EL. INC. CATALOG NO.	NO. OF CONTACTS	DIMENSIONS							
		A	B	C	D	E	F	G	H
XMRE 7-0300X	7	NOT AVAILABLE							
5-3	5-3	NOT AVAILABLE							
8	8	NOT AVAILABLE							
7-2	7-2	.44	1.000	—	1.30	1	59x.31	.63	
9	9	NOT AVAILABLE							
12-2	12-2	NOT AVAILABLE							
14	14	1.25	.50	.937	—	1.05	.75	59x.38	.63
18	18	1.31	.63	1.000	—	1.25	.75	44x.62	1.06
20	20	1.56	.50	1.250	—	1.05	.75	46x.38	.63
21	21	2.25	.44	1.937	—	1.36	.91	31x.78	.88
26	26	1.63	.64	1.312	—	1.18	1.28	44x.78	1.06
34	34	2	.83	1.688	.968	1.75	1.25	56x.106	1.06
41	41	NOT AVAILABLE							
42	42	2.31	.83	2.000	.968	1.80	1.30	56x.106	1.06
50	50	2.59	.83	2.282	.968	1.80	1.30	56x.106	1.06
75	75	2.59	1.19	2.282	.766	1.86	1.31	.86x.1	1.34
XMRE 104-0300X	104	NOT AVAILABLE							

- HOOD, ALUM. ALLOY, QQ-A-250, ANODIZED & SEAL IN POTASSIUM DICHROMATE.
- CABLE CLAMP, ALUM. ALLOY, QQ-A-250, ANODIZED & SEAL IN POTASSIUM DICHROMATE.
- CABLE CLAMP HINGE, ALUM. ALLOY, QQ-A-250, ANODIZED & SEAL IN POTASSIUM DICHROMATE.
- FIL. HD. SCREW, BRASS, QQ-B-626, CAD. PLATE PLUS MAT. IRIDITE.

NOTE: 1. \*\* INDICATES NO. OF CONTACTS.

2-27

TOLERANCE UNLESS OTHERWISE SPECIFIED FRACTIONS 2. DECIMALS 3. .007 ANGULAR 3. XX 1.02

TITLE COMPOSITE OUTLINE OF HOOD (FORMED) XMRE \*\* -0300X (2 OR L) MATERIAL FINISH

DR. F. KISS CTD. 1/2 L DATE 9-9-63 DATE 1/7/63

WINCHESTER ELECTRONICS, INC. NORWALK, CONN.

DWG. NO. C REV. 2-27

1.47

CHANGED ALL FRACTIONS TO DECIMALS  
 ADDED 1.02  
 7/16 X 3/4  
 .44 X .62 WAS EN-1087  
 REVISIONS

EC R# 218  
 AD. POINT