

PLEASE CHECK WWW.MOLEX.COM FOR LATEST PART INFORMATION

Part Number: [0002092105](#)
Status: **Active**
Description: Board-In Crimp Terminal, Series 4706, Male, Tin (Sn) Plated Brass Contact, 16-18 AWG, 11.20mm (.440") Terminal Progression

Documents:

[Drawing \(PDF\)](#) [RoHS Certificate of Compliance \(PDF\)](#)
[Product Specification PS-4706-001 \(PDF\)](#)

General

Product Family	Crimp Terminals
Series	4706
Comments	Progression 11.20 (.440)
Crimp Quality Equipment	Yes
Product Name	Board-In Stand Alone Terminal

Physical

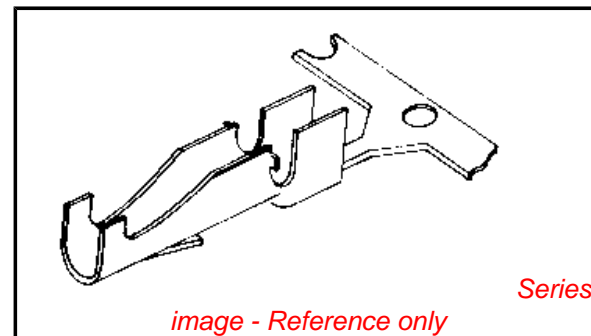
Gender	Male
Material - Metal	Brass
Material - Plating Mating	Tin
Material - Plating Termination	Tin
Packaging Type	Reel
Plating min: Mating (µin)	100
Plating min: Mating (µm)	2.50
Plating min: Termination (µin)	100
Plating min: Termination (µm)	2.50
Termination Interface: Style	Crimp or Compression
Wire Insulation Diameter	3.05mm (.120") max.
Wire Size AWG	16, 18
Wire Size mm ²	N/A

Material Info

Old Part Number	4706-(P909)
-----------------	-------------

Reference - Drawing Numbers

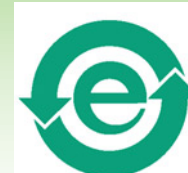
Product Specification	PS-4706-001
Sales Drawing	SD-4706



EU RoHS

ELV and RoHS Compliant
REACH SVHC Contains SVHC: No

China RoHS



Halogen-Free Status
Halogen-Free

Need more information on product environmental compliance?

Email productcompliance@molex.com
 For a multiple part number RoHS Certificate of Compliance, [click here](#)

Please visit the [Contact Us](#) section for any non-product compliance questions.

Search Parts in this Series

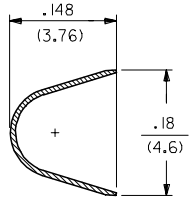
4706Series

Application Tooling | FAQ

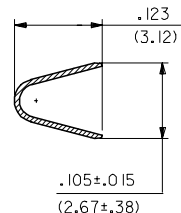
Tooling specifications and manuals are found by selecting the products below. Crimp Height Specifications are then contained in the Application Tooling Specification document.

Global

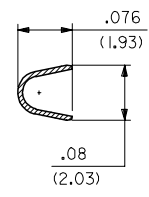
Description	Product #
Hand Crimper	0011010065
Terminator Die	0011402042
Terminator Die - OVERLAP INSULATION CRIMP	0011402044
Mini-Mac™ Applicator	0638934000



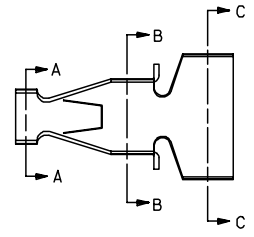
SECTION C-C



SECTION B-B



SECTION A-A



NOTES:

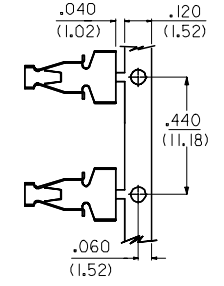
1. MATERIAL: 260 BRASS .008 THK
2. TERMINAL 4706-(***)* ACCEPTS 16 TO 18 AWG WIRE WITH INSULATION DIA OF .120 MAX
3. TERMINALS CONFORM TO SOLDERABILITY SPEC 152
4. PRODUCT SPECIFICATION: PS-4706-001

4706-*(***)*
 BLANK=SEE SHT 1
 3=SEE SHEET 2
 FORM
 BLANK=CHAIN
 L=LOOSE

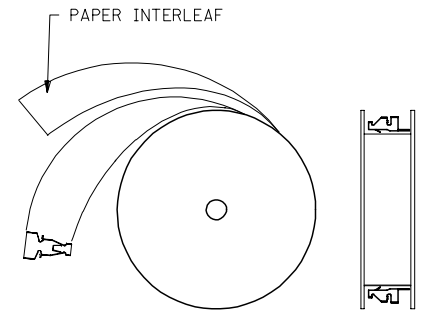
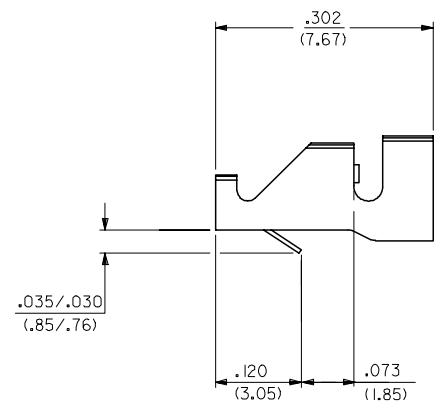
PLATING PER SDES-88

* (P909) OVERALL HOT TIN DIP: 2.54 MICROMETERS MIN

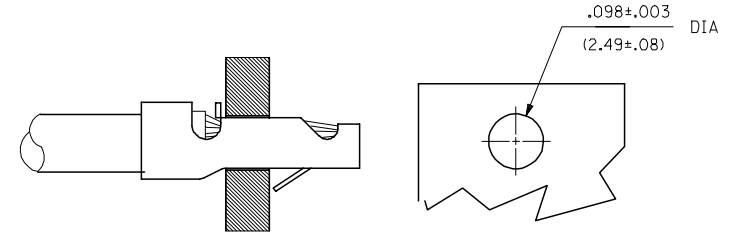
*THE PRIMARY SHIPPING CARTON WILL BE LABELED "COMPLIANT TO ROHS DIRECTIVE 2002/95/EC AND ELV ANNEX II OF DIRECTIVE 2000/53/EC." CARTONS WITHOUT THIS LABEL MAY CONTAIN PRODUCT WITH TIN-LEAD PLATING.



CARRIER DETAIL



WINDING SPEC



RECOMMENDED PC BOARD

4706-(***)*

EDP NO.	ENG NO		
02-09-2105	4706-(P909)		
- -	-()		
- -	-()		

CHANGE TO ME10 EC NO: UCP2005-0966 DRAWN/ADRATNOL 2004/11/19 CHKD: SAMIEC 2004/07/05 APPR: MMARGULIS 2004/11/05	QUALITY SYMBOLS ▽=0 ▽=0	DESCRIPTION J1
---	-------------------------------	-------------------

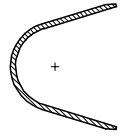
GENERAL TOLERANCES (UNLESS SPECIFIED)	
mm	INCH
4 PLACES ± .010	± .0004
3 PLACES ± .014	± .0005
2 PLACES ± 0.25	± .010
1 PLACE ± 0.36	± .014
ANGULAR ±1/2°	

DRAWN BY SAMIEC	DATE 02/25/92
CHECKED BY PATEL	DATE 02/25/92
APPROVED BY LENZ	DATE 02/25/92

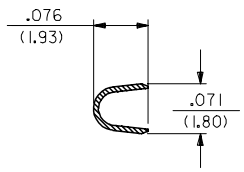
DIMENSION STYLE IN/MM	.062 SCALE ---	DESIGN UNITS INCH	THIRD ANGLE PROJECTION
MATERIAL NO. SEE CHART		DOCUMENT NO. SD-4706	SHEET NO. 1 OF 2
DRAFT WHERE APPLICABLE MUST REMAIN WITHIN DIMENSIONS			
THIS DRAWING CONTAINS INFORMATION THAT IS PROPRIETARY TO MOLEX INCORPORATED AND SHOULD NOT BE USED WITHOUT WRITTEN PERMISSION			

STRAIN RELIEF TERMINAL

MOLEX MOLEX INCORPORATED



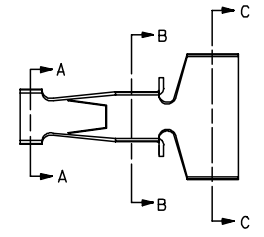
SECTION C-C



SECTION B-B



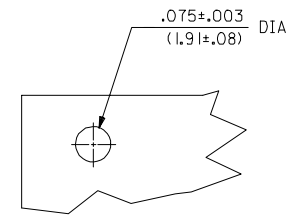
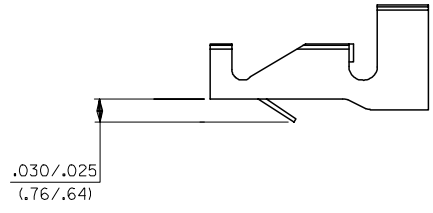
SECTION A-A



NOTES:

1. THIS PART IS THE SAME AS SHEET 1 EXCEPT AS SHOWN
2. MATERIAL: 260 BRASS .006 THK
3. FINISH: (909) * OVERALL HOT TIN DIP: 2.54 MICROMETERS MIN.
4. TERMINAL 4706-3(***)* ACCEPTS 18 TO 24 AWG WIRE WITH INSULATION DIA OF .120 MAX

*THE PRIMARY SHIPPING CARTON WILL BE LABELED 'COMPLIANT TO RoHS DIRECTIVE 2002/95/EC AND ELV ANNEX II OF DIRECTIVE 2000/53/EC.' CARTONS WITHOUT THIS LABEL MAY CONTAIN PRODUCT WITH TIN-LEAD PLATING.



RECOMMENDED PC BOARD
.062 THK

4706-3(***)*			
EDP NO.	ENG NO.		
02-07-2101	4706-3(P909)		

CHANGE TO ME10 EC NO: UCP2005-0966 DRW/ADR/TOL 2004/11/19 CHKD: SAMIEC 2004/11/19 APPR: YWARGULLIS 2004/11/04	QUALITY SYMBOLS	GENERAL TOLERANCES (UNLESS SPECIFIED)	DIMENSION STYLE IN/MM	SCALE ---	DESIGN UNITS INCH	THIRD ANGLE PROJECTION
	▽=0	4 PLACES ± --- ± ---	DRAWN BY DATE	TITLE		
	▽=0	3 PLACES ± --- ± .010	SAMIEC 02/25/92	STRAIN RELIEF TERMINAL		
		2 PLACES ± 0.25 ± .014	CHECKED BY DATE	MOLEX INCORPORATED		
	1 PLACE ± 0.36 ± ---	PATEL 02/25/92	APPROVED BY DATE	MATERIAL NO. DOCUMENT NO. SHEET NO.		
	ANGULAR ±1/2°	LENZ 02/25/92	LENZ 02/25/92	SEE CHART SD-4706 2		
			DRAFT WHERE APPLICABLE MUST REMAIN WITHIN DIMENSIONS			
			THIS DRAWING CONTAINS INFORMATION THAT IS PROPRIETARY TO MOLEX INCORPORATED AND SHOULD NOT BE USED WITHOUT WRITTEN PERMISSION			