

**PLEASE CHECK WWW.MOLEX.COM FOR LATEST PART INFORMATION**

**Part Number:** **0190030141**  
**Status:** **Active**  
**Description:** InsulKrimp™ Quick Disconnect, Female, Box, Tab 4.75mm (.187") x 0.81mm (.032")

**Documents:**

[Drawing \(PDF\)](#) [RoHS Certificate of Compliance \(PDF\)](#)  
[Product Specification PS-19902-008 \(PDF\)](#)

**General**

Product Family	Quick Disconnects
Series	19003
Comments	Funnel Entry
Crimp Quality Equipment	Yes
Product Name	InsulKrimp™
Type	Quick Disconnect

**Physical**

Barrel Type	Closed
Color - Resin	Natural
Gender	Female
Glow-Wire Compliant	No
Insulation	Nylon (PA)
Lock to Mating Part	None
Material - Metal	Brass
Material - Plating Mating	Tin
Material - Plating Termination	Tin
Material - Resin	Nylon
Orientation	Straight
Packaging Type	Bag
Plating min: Mating (µin)	160
Plating min: Mating (µm)	4
Plating min: Termination (µin)	160
Plating min: Termination (µm)	4
Polarized to Mating Part	No
Tab Thickness	0.81mm (.032")
Tab Width	4.75mm (.187")
Temperature Range - Operating	-65°C to +105°C
Termination Interface: Style	Crimp or Compression
Wire Size AWG	24, 26

**Electrical**

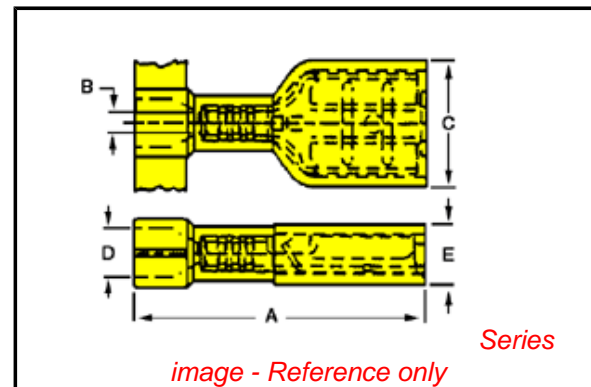
Voltage - Maximum	600V
-------------------	------

**Material Info**

Old Part Number	M-2211V
-----------------	---------

**Reference - Drawing Numbers**

Product Specification	PS-19902-008
Sales Drawing	SD-19003-003



**EU RoHS**

**ELV and RoHS Compliant**  
**REACH SVHC**  
 Not Reviewed  
**Halogen-Free**  
**Status**  
**Not Reviewed**

**China RoHS**



**Need more information on product environmental compliance?**

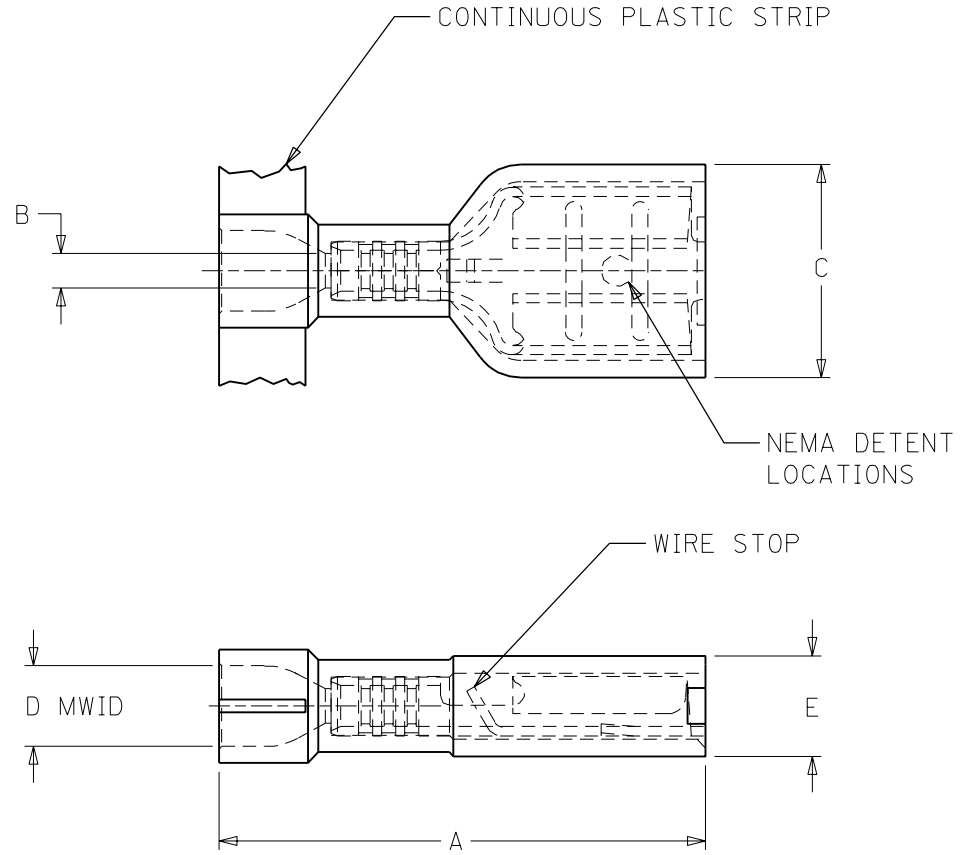
Email [productcompliance@molex.com](mailto:productcompliance@molex.com)  
 For a multiple part number RoHS Certificate of Compliance, [click here](#)

Please visit the [Contact Us](#) section for any non-product compliance questions.

**Search Parts in this Series**

19003Series

MOLEX-ETC PART NO.	INS. COLOR	WIRE RANGE AWG	FITS MALE TAB SIZE	STOCK THICK.	"A" MAX.	"B" MIN.	"C" MAX.	"D" MWID	"E" MAX.	CARRIER CONFIGURATION
190030138	YELLOW	26-24	.187X.020	.016/0.41	.78/19.8	.030/0.76	.316/8.03	.075/1.91	.160/4.06	LOOSE PIECE
190030139	YELLOW	26-24	.187X.020	.016/0.41	.78/19.8	.030/0.76	.316/8.03	.075/1.91	.160/4.06	TAPE MOUNT
190030140	YELLOW	26-24	.187X.020	.016/0.41	.78/19.8	.030/0.76	.316/8.03	.075/1.91	.160/4.06	PLASTIC STRIP
190030141	YELLOW	26-24	.187X.032	.016/0.41	.78/19.8	.030/0.76	.316/8.03	.075/1.91	.160/4.06	LOOSE PIECE
190030142	YELLOW	26-24	.187X.032	.016/0.41	.78/19.8	.030/0.76	.316/8.03	.075/1.91	.160/4.06	TAPE MOUNT
190030143	YELLOW	26-24	.187X.032	.016/0.41	.78/19.8	.030/0.76	.316/8.03	.075/1.91	.160/4.06	PLASTIC STRIP



- 1. MATERIAL: TERMINAL: BRASS  
PLATING: ELECTRO-TIN  
INSULATION: NYLON 6/6 94V-0 RATING  
COLOR: SEE CHART
- 2. MWID = MAXIMUM WIRE INSULATION DIAMETER
- 3. ALL DIMENSIONS = INCHES/MM

SALES DRAWING

RELEASE TO PROD. EC NO. ETC2001-0365 DRWN: HEB 01/06/11 CHK: RWD 01/06/11 APPR: RWD 01/06/11	QUALITY SYMBOLS MAJOR $\nabla=0$ CRITICAL $\nabla C=0$	GENERAL TOLERANCES: (UNLESS SPECIFIED)		SCALE NO: NE	DESIGN UNITS <input type="checkbox"/> mm <input checked="" type="checkbox"/> INCH	THIRD ANGLE PROJECTION <input checked="" type="checkbox"/> mm <input type="checkbox"/> INCH	SHT	REV	
				mm	INCH	DRAWN BY & DATE		REVISIONS	
				4 PLACES $\pm 0.---$	$\pm .---$	HEB 01/06/07		TITLE: FIQD FEMALE, INSULKRIMP	
				3 PLACES $\pm 0.---$	$\pm .005$	RWD 01/06/07		94V-0 MATERIAL	
		2 PLACES $\pm 0.13$	$\pm .01$	RWD 01/06/07		26-24 AWG			
		1 PLACE $\pm 0.25$	$\pm .---$	RWD 01/06/07		MOLEX INCORPORATED			
		ANGULAR: $\pm 1/2^\circ$		CAD FILENAME	MATERIAL NO.	DRAWING NO.	SHEET NO.		
		DRAFT WHERE APPLICABLE MUST REMAIN WITHIN DIMENSIONS		S19003003.DGN	SEE TABLE	SD-19003-003	1 OF 1		
		THIS DRAWING CONTAINS INFORMATION THAT IS PROPRIETARY TO MOLEX INCORPORATED AND SHOULD NOT BE USED WITHOUT WRITTEN PERMISSION.						SIZE B	