

FEATURES AND SPECIFICATIONS

Features and Benefits

- Sizes 2 to 15 circuits
- Side walls protect latch and facilitate mating
- Housing lance provides secure terminal retention

Reference Information

Packaging: Bag

UL File No.: E29179

CSA File No.: LR19980

Mates With: 53258, 53259, 53265 and 53266

Use With: 50217

Designed In: Millimeters

Electrical

Voltage: 250V

Current: 5.5A max. (3.50mm pitch)

6.0A max. (7.00mm pitch)

Contact Resistance: 10mΩ max.

Dielectric Withstanding Voltage: 1500V AC/1 min.

Insulation Resistance: 1000 MΩ min.

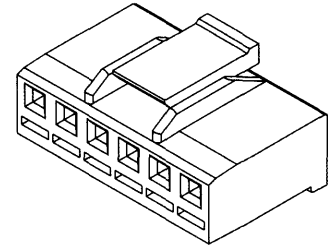
Physical

Housing: PBTP, UL 94V-0

Operating Temperature: -40 to +105°C

molex® 3.50mm (.138") Pitch Wire-to-Board Housing

51067 Positive Lock



CATALOG DRAWING (FOR REFERENCE ONLY)

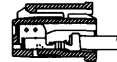
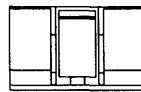
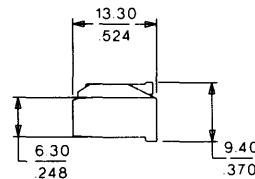
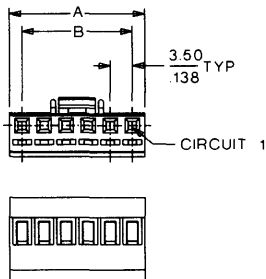


FIGURE OF TERMINAL WHEN ASSEMBLED



ORDERING INFORMATION AND DIMENSIONS

Circuits	Order No.	Dimension	
		A	B
2	51067-0200	7.50 (.295)	3.50 (.138)
3	51067-0300	11.00 (.433)	7.00 (.276)
4	51067-0400	14.50 (.571)	10.50 (.413)
5	51067-0500	18.00 (.709)	14.00 (.551)
6	51067-0600	21.50 (.846)	17.50 (.689)
7	51067-0700	25.00 (.984)	21.00 (.827)
8	51067-0800	28.50 (1.122)	24.50 (.965)
9	51067-0900	32.00 (1.260)	28.00 (1.102)
10	51067-1000	35.50 (1.398)	31.50 (1.240)
11	51067-1100	39.00 (1.535)	35.00 (1.378)
12	51067-1200	42.50 (1.673)	38.50 (1.516)
13	51067-1300	46.00 (1.811)	42.00 (1.654)
14	51067-1400	49.50 (1.949)	45.50 (1.791)
15	51067-1500	53.00 (2.087)	49.00 (1.929)

3.00 to 7.92mm (.118 to .312") Pitch

D