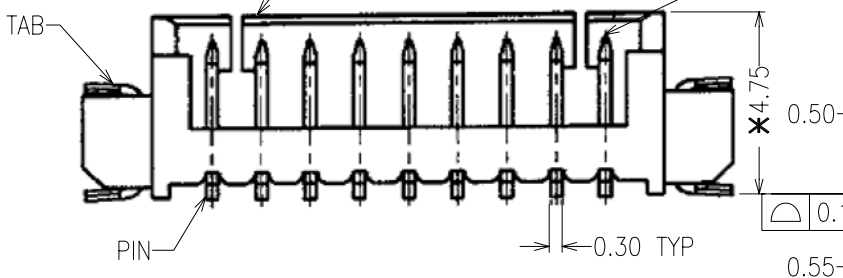
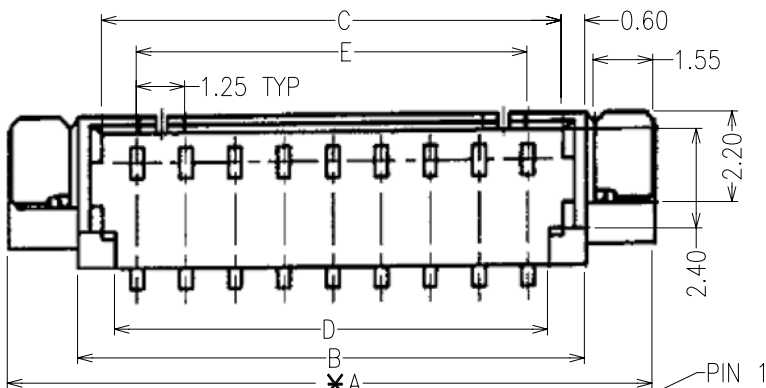


SPECIFICATIONS:

- MATERIAL:-
 HOUSING: HIGH TEMP. THERMOPLASTIC UL 94V-0
 PIN: HIGH STRENGTH PHOSPHOR BRONZE
 TAB: HIGH STRENGTH PHOSPHOR BRONZE
 FINISH:-
 PIN: BASE PLATING NICKEL
 CONTACT POINT: Sn (MATT) OVER NICKEL
 SOLDER TAIL: Sn(MATT) OVER NICKEL
 TAB: Sn (MATT) OVER NICKEL
 ELECTRICAL:-
 CURRENT RATING: 1 A FOR #26~30, 0.8A FOR AWC#32
 WORKING VOLTAGE: AC/DC 125V
 DIELECTRIC WITHSTANDING VOLTAGE: 250 V AC RMS FOR 1 MINUTE
 CONTACT RESISTANCE: 20 mΩ MAX.
 INSULATION RESISTANCE: 100 MΩ MIN.
 MECHANICAL:-
 WITHDRAWAL FORCE: 454g MIN.
 ENVIRONMENTAL:-
 TEMPERATURE RANGE: -40°C TO +85°C



No. Of Pins	DIM				
	A	B	C	D	E
2	7.79	4.25	3.05	2.35	1.25
3	9.04	5.50	4.30	3.60	2.50
4	10.29	6.75	5.55	4.85	3.75
5	11.54	8.00	6.80	6.10	5.00
6	12.79	9.25	8.05	7.35	6.25
7	14.04	10.50	9.30	8.60	7.50
8	15.29	11.75	10.55	9.85	8.75
9	16.54	13.00	11.80	11.10	10.00
10	17.79	14.25	13.05	12.35	11.25
11	19.04	15.50	14.30	13.60	12.50
12	20.29	16.75	15.55	14.85	13.75
13	21.54	18.00	16.80	16.10	15.00
14	22.79	19.25	18.05	17.35	16.25
15	24.04	20.50	19.30	18.60	17.50

TOLERANCES

DIMENSIONS	ANGLES
X.X = ±0.38mm	X = ±5°
X.XX = ±0.25mm	X.X = ±3°

NOTES: ALL DIMENSIONS AND NOTES MARKED * ARE CRITICAL AND MUST BE CHECKED IN ACCORDANCE WITH QUALITY DOC. Q1-02A

*NOTE: ADD -R BEHIND CODE FOR TAPE & REEL PACKAGING

Allan	1	01.08.06	-
NAME	ISS.	DATE	C/NOTE

APPROVED: *Paul*
 CHECKED:
 DRAWN: Allan

ORDER CODE
M30-301 XX 46
 NO. OF WAYS

CUSTOMER REF.:
 ASSEMBLY DRG:

HARWIN

HARWIN USA
 TEL: 603 893 5376
 FAX: 603 893 5396
 mis@harwin.com

HARWIN Europe (UK)
 TEL: 023 9231 4545
 FAX: 023 9231 4590
 mis@harwin.co.uk

HARWIN Asia
 TEL: +65 6 779 4909
 FAX: +65 6 779 3868
 mis@harwin.com.sg

THIS DRAWING AND ANY INFORMATION OR DESCRIPTIVE MATTER SET OUT HEREON ARE CONFIDENTIAL AND COPYRIGHT PROPERTY OF THE HARWIN GROUP AND MUST NOT BE DISCLOSED, LOANED, COPIED OR USED FOR MANUFACTURING, TENDERING OR FOR ANY OTHER PURPOSE WITHOUT THEIR WRITTEN PERMISSION.

TOLERANCES
 X = ±1mm
 X.X = ±0.25mm
 X.XX = ±0.10mm
 X.XXX = ±0.01mm
 ANGLES = ±5°
 UNLESS STATED

MATERIAL: SEE NOTES
 FINISH: SEE NOTES
 S/AREA: mm²

TITLE: HEADER P=1.25mm SMT STRAIGHT TYPE
 DRAWING NUMBER: M30-301 XX 46
 SHT 1 OF 1