



# TAI-SAW TECHNOLOGY CO., LTD.

No. 3, Industrial 2nd Rd., Ping-Chen Industrial District,  
Taoyuan, 324, Taiwan, R.O.C.

TEL: 886-3-4690038 FAX: 886-3-4697532

E-mail: [tstsales@mail.taisaw.com](mailto:tstsales@mail.taisaw.com) Web: [www.taisaw.com](http://www.taisaw.com)

## Approval Sheet For Product Specification

Issued Date:

Product Name: SAW Filter 185.5MHz SMD 13.3x6.5mm

TST Parts No.:TB0572A

Customer Parts No.:\_\_\_\_\_

Company: _____
Division: _____
Approved by : _____
Date: _____

Checked by: \_\_\_\_\_ Andy Lee

Approval by: \_\_\_\_\_ Francis Chen

Date: \_\_\_\_\_ 2007/12/28



# TAI-SAW TECHNOLOGY CO., LTD.

No. 3, Industrial 2nd Rd., Ping-Chen Industrial District,  
Taoyuan, 324, Taiwan, R.O.C.

TEL: 886-3-4690038 FAX: 886-3-4697532

E-mail: [tstsales@mail.taisaw.com](mailto:tstsales@mail.taisaw.com) Web: [www.taisaw.com](http://www.taisaw.com)

SAW Filter 185.5 MHz SMD 13.3mmX6.5mm

MODEL NO.: TB0572A

REV. NO. 1

## A. MAXIMUM RATING:

1. Operating Temperature: -40°C to +85°C
2. Storage Temperature: -40°C to +85°C
3. Maximum Input Power : 10dBm

RoHS Compliant  
Lead free  
Lead-free soldering

## B. ELECTRICAL CHARACTERISTICS:

1. Ambient Temperature: 25 °

Item		Min.	Typical	Max.	
Center frequency	Fc	MHz	-	185.5	-
Insertion loss at Fc		dB	-	9.0	11.0
Bandwidth at -1.0dB		MHz	20.0	22.0	-
Amplitude Ripple (Fc ± 9.5 MHz)		dB	-	0.6	1.0
Group Delay Ripple (Fc ± 9.5 MHz)		nS	-	50	-
Attenuation (Reference level from minimum Insertion loss )					
100 MHz ~164.8 MHz		dB	40	51	-
164.8 MHz ~ 170.7 MHz		dB	25	44	-
201.3 MHz ~ 206.8 MHz		dB	25	39	-
206.8 MHz ~ 300 MHz		dB	38	46	-
Temp Coefficient		ppm/°C	-	-93	-

## C. FREQUENCY CHARACTERISTICS :

### 1.S21 Response

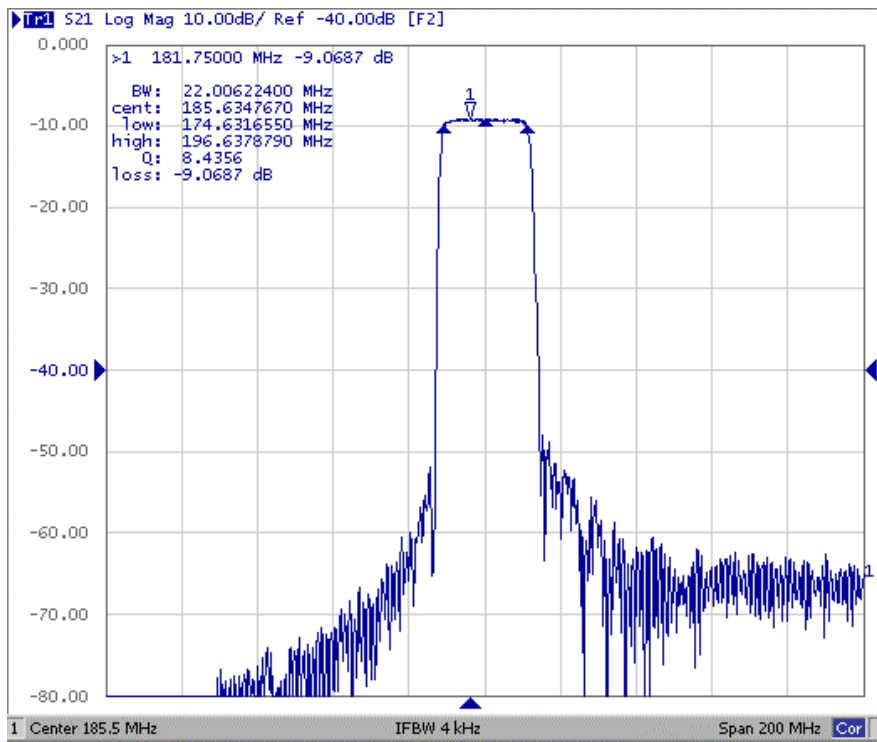


Fig1. Horizontal: 20MHz/Div Vertical: 10dB/Div

### 2. Passband Ripple

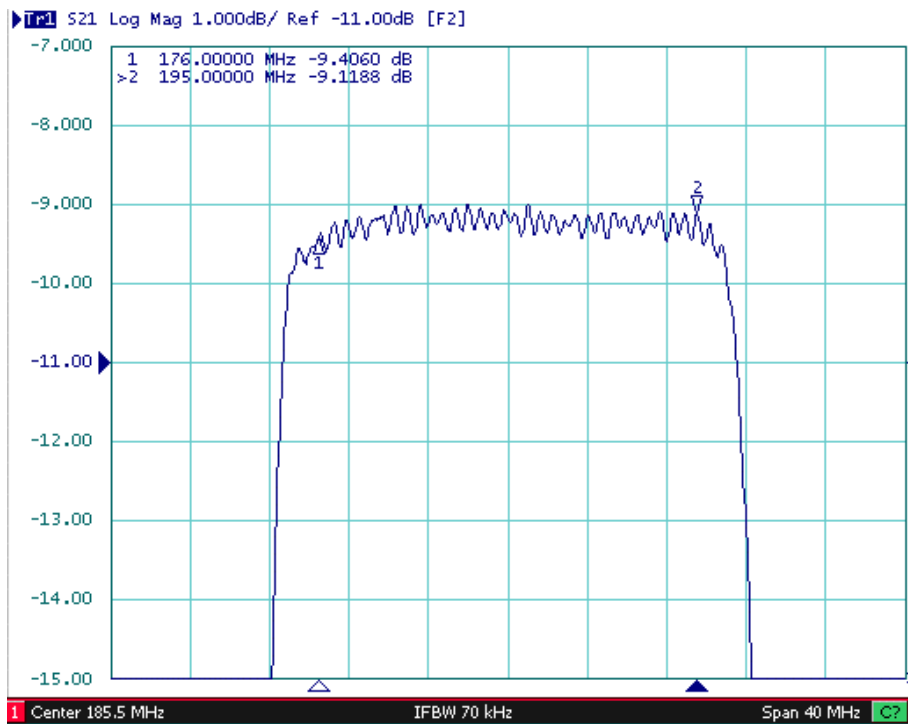


Fig2. Horizontal: 4MHz/Div Vertical: 1dB/Div

### 3. Group Delay Ripple

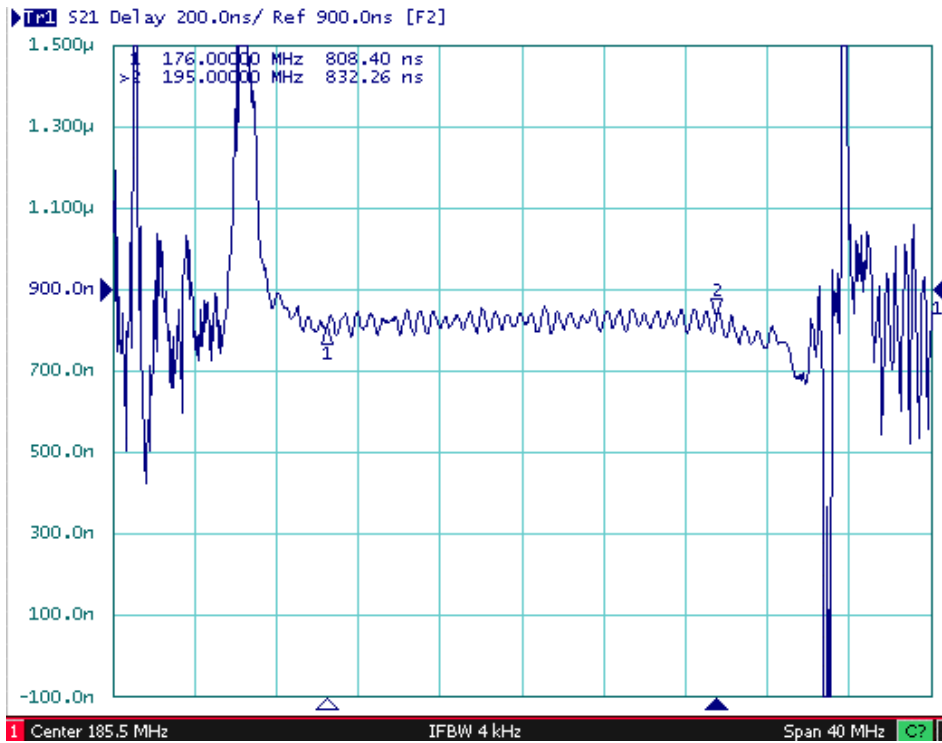
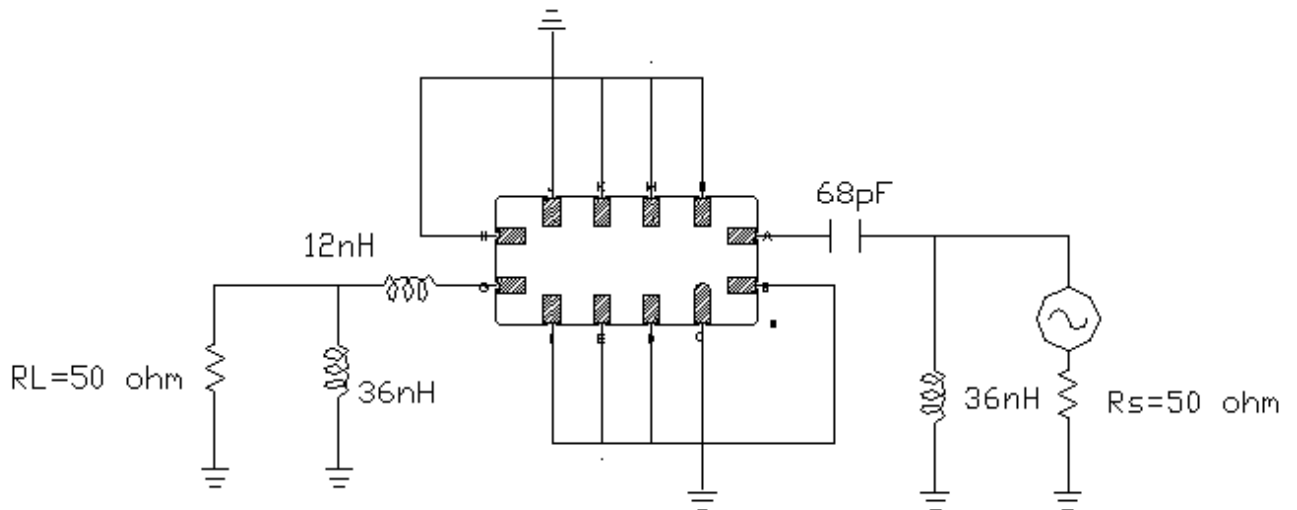


Fig3. Horizontal: 4MHz/Div Vertical: 200nS/Div

### D. MEASUREMENT CIRCUIT

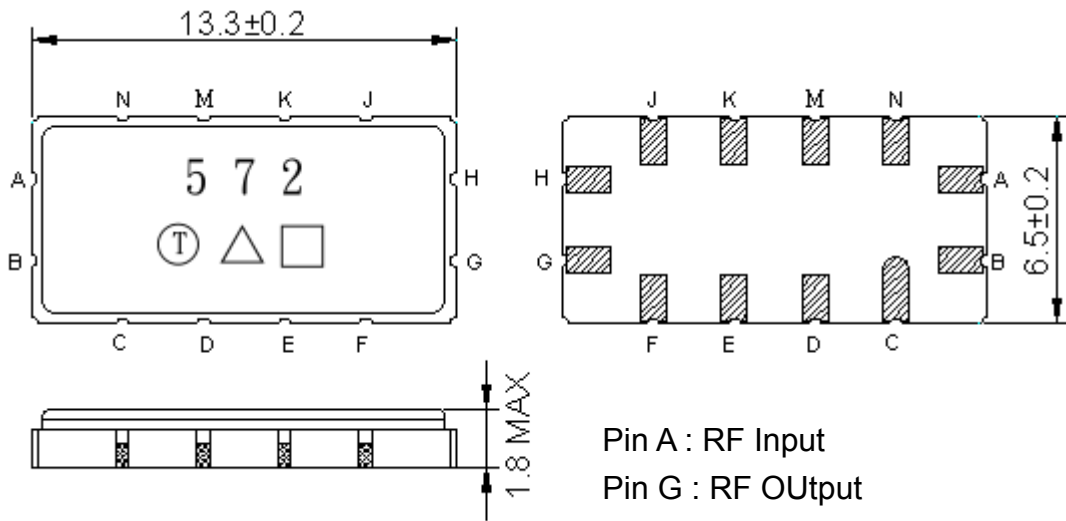
1. Single ended input 50 ohm to Single ended Output 50 ohm

:



Note: The matching structure will change according to different test fixture.

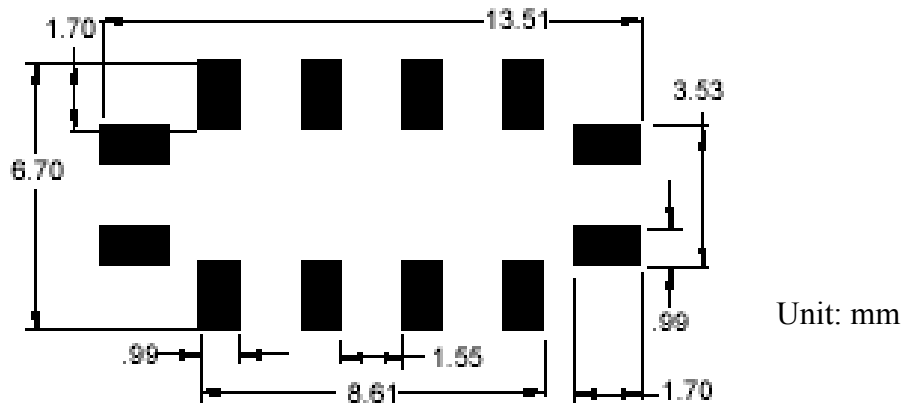
**E.OUTLINE DRAWING:**



Pin A : RF Input  
 Pin G : RF Output  
 Pin B,C,D,E,F,H,J,K,M,N : Ground  
 Unit: mm  
 □ : Week Code (Follow the table from planner each year)  
 △ : Product / Year Code

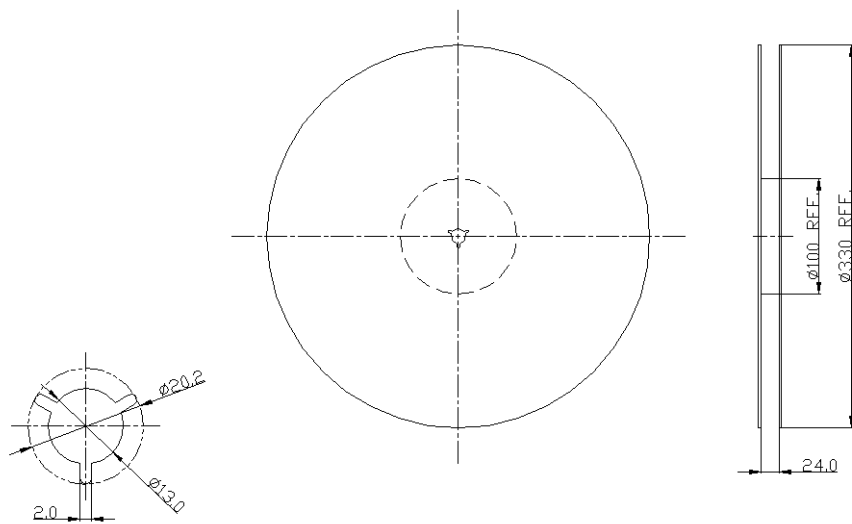
Year	2005 2009	2006 2010	2007 2011	2008 2012
Product Code	B	b	<u>B</u>	<u>b</u>

## F. PCB Footprint



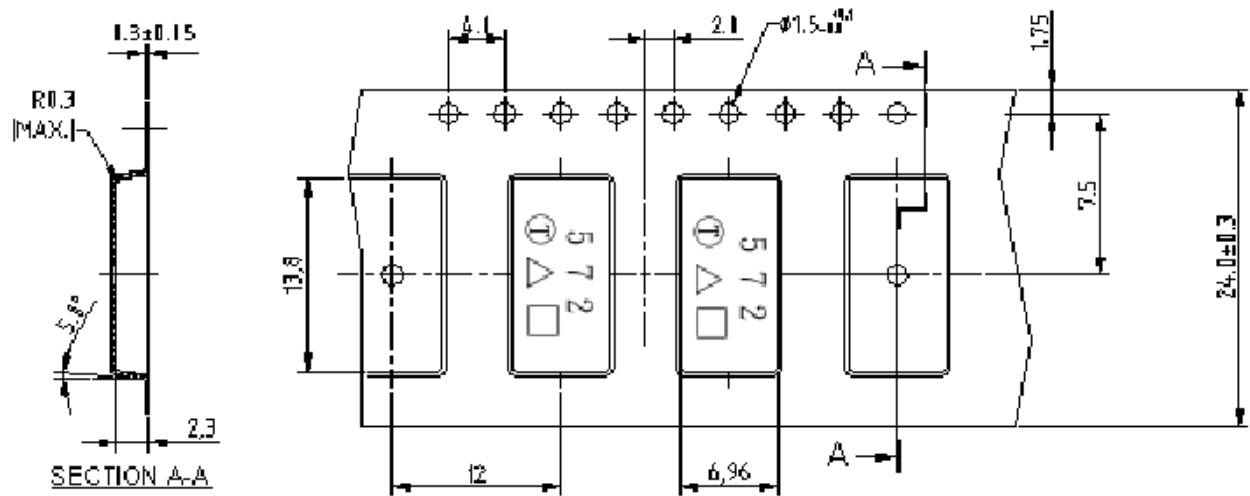
## H. PACKING:

### 1. REEL DIMENSION



Unit: mm

## 2. TAPE DIMENSION



I.

Unit: mm

## G. RECOMMENDED REFLOW PROFILE :

