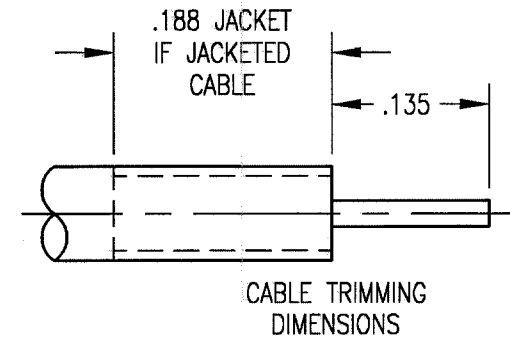


NOTES:

1. MATERIALS:  
 BODY: BRASS PER ASTM B16  
 INSULATOR: TEFLON PER ASTM D1710  
 CONTACT: BERYLLIUM COPPER PER ASTM B196  
 CLIP RING: BERYLLIUM COPPER PER ASTM B194
2. FINISH:  
 BODY: .000030 GOLD PER MIL-G-45204 OVER NICKEL PER QQ-N-290  
 CONTACT: .000030 GOLD PER MIL-G-45204 OVER NICKEL PER QQ-N-290  
 CLIP RING: .000100 MIN. NICKEL PER QQ-N-290 OVER COPPER FLASH
3. ELECTRICAL:  
 OPERATING FREQUENCY: 0 TO 3.0 GHZ  
 VSWR: 1.15 MAXIMUM  
 IMPEDANCE: 50 OHMS
4. RETENTION IN HOUSING SHALL BE 15 LBS. MINIMUM
5. FOR USE WITH .141 SEMI-RIGID CABLE



THIS INFORMATION IS PROPRIETARY AND CONFIDENTIAL. IT IS DISCLOSED TO YOU ON CONDITION NO FURTHER DISCLOSURE IS MADE TO OTHER THAN RETCONN PERSONNEL WITHOUT WRITTEN AUTHORIZATION FROM RETCONN INC., TORRINGTON, CT.

REV.	DESCRIPTION OF CHANGE	DATE	DRN	APPR
C	ECN 2055	7/13/98	JMC	
B	ECN 1832	9-3-97	JED	JMC
A	ECN 1734	4-21-97	KJT	JMC
-	GENERATED FOR CUSTOMER	2-24-97	KJT	GSA
787	REVISIONS			

UNLESS OTHERWISE SPECIFIED  
 TOLERANCES: 3 PLACE DECIMALS ±.005 2 PLACE DECIMALS ±.010  
 FRACTIONS ±1/64 ANGLE ±2°  
 ALL DIMENSIONS PRIOR TO PLATING  
 CHAMFER 1ST THREAD 45° TO ROOT DIAMETER  
 REMOVE ALL BURRS AND SHARP EDGES  
 ALL DIAMETERS TO BE CONCENTRIC WITHIN .003 TIR  
 SURFACE FINISH SHALL BE 63 MICROINCHES MAXIMUM  
 DIMENSIONS IN INCHES DO NOT SCALE PRINT

<b>SALES DRAWING</b>				
<b>RETCONN</b>				
A SUBSIDIARY OF SPM 199 W. PEARL ROAD TORRINGTON, CT. 06790 TEL. (860) 489-1220 FAX (860) 496-7307				
TITLE STRAIGHT CABLE PLUG				
DRAWN KJT	DATE 3-15-97	CHECKED JMC	SCALE 6:1	FSCM ODWJ4
APPR. AT	DWG. NO. 310-510-1410G			REV. C