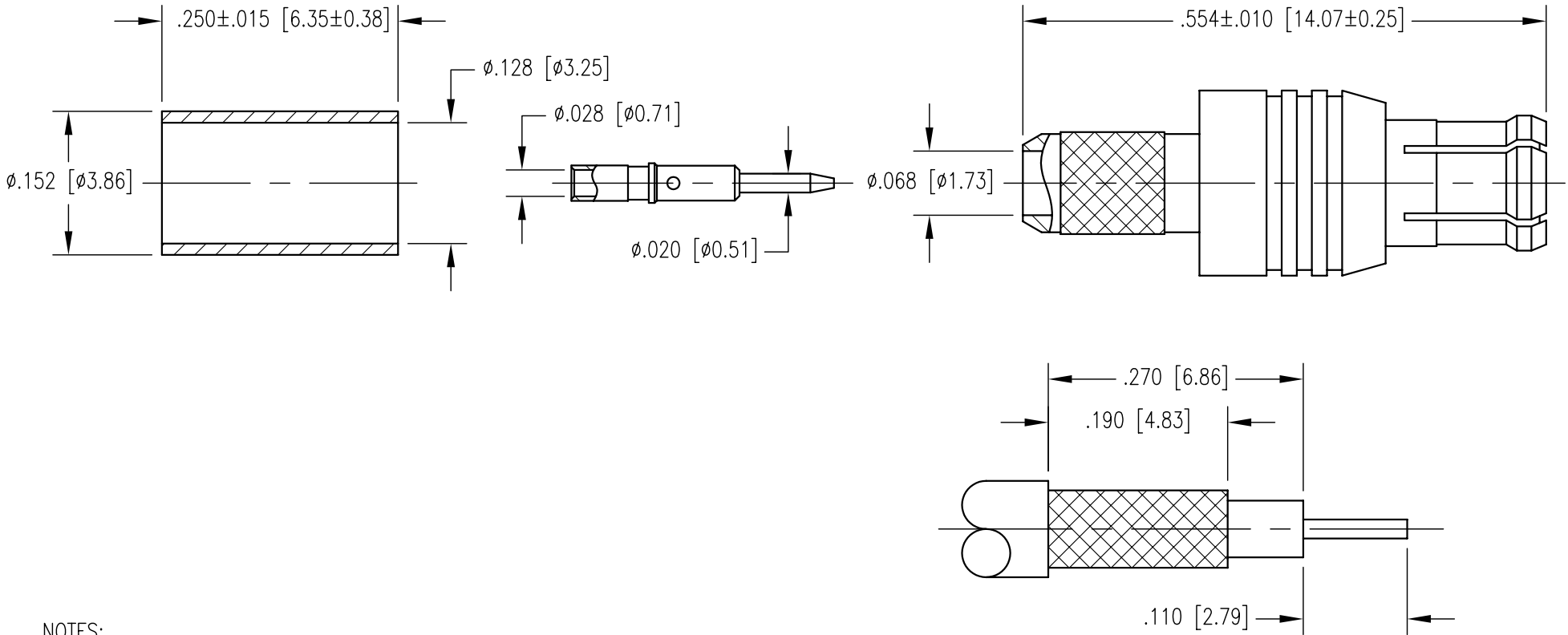


REV	DESCRIPTION	BY DATE	APPD
A	RELEASED PER ECR 7845	JED 8/25/03	JEM



NOTES:

- MATERIALS:
 FRONT BODY AND FERRULE: COPPER ALLOY
 ALL OTHER METAL PARTS: BRASS PER ASTM B16
 INSULATOR: TEFLON PER ASTM D1710
- FINISH:
 CENTER CONTACT: .000030 MIN. GOLD PER ASTM B488 OVER
 .000100 MIN. COPPER PER MIL-C-14550
 FERRULE: .000100 MIN. TIN PER ASTM B545 OVER
 COPPER FLASH PER MIL-C-14550
 ALL OTHER METAL PARTS: .000015 MIN. GOLD PER ASTM B488 OVER
 .000100 MIN. COPPER PER MIL-C-14550
- FOR USE WITH RG-316 CABLE OR EQUIVALENT.
- FOR CABLING PROCEDURES USE CAP 9-08 WITH TRIMMING DIMENSIONS SHOWN.
- CRIMP FERRULE USING .128 HEX DIE.

CABLE TRIMMING DIMENSIONS

PER ASME Y14.5M-1994 UNLESS OTHERWISE SPECIFIED: DIMENSIONS ARE IN INCHES [MM] TOLERANCES: DECIMALS .XX ± .01 [0.254] .XXX ± .005 [0.127] ANGLES ± 2° SCALE: 6:1		NORTHROP GRUMMAN Winchester Electronics 62 Barnes Industrial Road North Wallingford, CT 06492	
CUSTOMER DRAWING		TITLE MCX STRAIGHT PLUG	
DRAWN JED	DATE 8/25/03	CHECKED CWB	DATE 9/2/03
APPROVED JEM	DATE 8/29/03	APPROVED MG	DATE 9/2/03
A		SD450-900-0630J	SHT. OF REV. 1 1 A