



**Ordering number C12500\_MIRA-M**

|                 |         |             |            |
|-----------------|---------|-------------|------------|
| Family          | Mira    | FWHM        | 28 degrees |
| Type            | Lens    | Efficiency  | 83 %       |
| LED             | MT-G    | cd/lm       | 2.200      |
| Color           | Clear   | Gerber File | Available  |
| Diameter        | 32.4 mm |             |            |
| Height          | 14.7 mm |             |            |
| Style           | Round   |             |            |
| Optic Material  | PC      |             |            |
| Holder Material | -       |             |            |
| Fastening       | -       |             |            |
| Status          | Ready   |             |            |



**Ordering number CA12503\_MIRA-M**

|                 |          |             |            |
|-----------------|----------|-------------|------------|
| Family          | Mira     | FWHM        | 28 degrees |
| Type            | Assembly | Efficiency  | 83 %       |
| LED             | MT-G     | cd/lm       | -          |
| Color           | White    | Gerber File | Available  |
| Diameter        | 35 mm    |             |            |
| Height          | 15.8 mm  |             |            |
| Style           | Round    |             |            |
| Optic Material  | PC       |             |            |
| Holder Material | PC       |             |            |
| Fastening       | Tape     |             |            |
| Status          | Ready    |             |            |



**Ordering number C12501\_MIRA-W**

|                 |         |             |            |
|-----------------|---------|-------------|------------|
| Family          | Mira    | FWHM        | 38 degrees |
| Type            | Lens    | Efficiency  | 80 %       |
| LED             | MT-G    | cd/lm       | 1.400      |
| Color           | Clear   | Gerber File | Available  |
| Diameter        | 32.4 mm |             |            |
| Height          | 14.7 mm |             |            |
| Style           | Round   |             |            |
| Optic Material  | PC      |             |            |
| Holder Material | -       |             |            |
| Fastening       | -       |             |            |
| Status          | Ready   |             |            |



**Ordering number CA12504\_MIRA-W**

|                 |          |             |            |
|-----------------|----------|-------------|------------|
| Family          | Mira     | FWHM        | 44 degrees |
| Type            | Assembly | Efficiency  | 82 %       |
| LED             | MT-G     | cd/lm       | -          |
| Color           | White    | Gerber File | Available  |
| Diameter        | 35 mm    |             |            |
| Height          | 15.8 mm  |             |            |
| Style           | Round    |             |            |
| Optic Material  | PC       |             |            |
| Holder Material | PC       |             |            |
| Fastening       | Tape     |             |            |
| Status          | Ready    |             |            |



**Ordering number C12502\_MIRA-WW**

|                 |         |             |            |
|-----------------|---------|-------------|------------|
| Family          | Mira    | FWHM        | 58 degrees |
| Type            | Lens    | Efficiency  | 81 %       |
| LED             | MT-G    | cd/lm       | 0.900      |
| Color           | Clear   | Gerber File | Available  |
| Diameter        | 32.4 mm |             |            |
| Height          | 14.7 mm |             |            |
| Style           | Round   |             |            |
| Optic Material  | PC      |             |            |
| Holder Material | -       |             |            |
| Fastening       | Glue    |             |            |
| Status          | Ready   |             |            |



**Ordering number CA12505\_MIRA-WW**

|                 |          |             |            |
|-----------------|----------|-------------|------------|
| Family          | Mira     | FWHM        | 66 degrees |
| Type            | Assembly | Efficiency  | 81 %       |
| LED             | MT-G     | cd/lm       | -          |
| Color           | White    | Gerber File | Available  |
| Diameter        | 35 mm    |             |            |
| Height          | 15.8 mm  |             |            |
| Style           | Round    |             |            |
| Optic Material  | PC       |             |            |
| Holder Material | PC       |             |            |
| Fastening       | Tape     |             |            |
| Status          | Ready    |             |            |

**NOTE: The typical divergence will be changed by different color, chip size and chip position tolerance. The typical total divergence is the full angle measured where the luminous intensity is half of the peak value.**



# PRODUCT DATASHEET

## Mira series

last update 17/4/2012



### GENERAL INFORMATION

- Product series especially designed & optimized for MT-G series of LEDs.
- Special care taken to make light distribution as uniform as possible.
- Lens material optical grade PC with high UV and temperature resistance (120 degrees of Celcius / 248 degrees of Fahrenheit). Allows use of high current and temperature conditions.

Please find more information about used materials from below:

[http://ledil.fi/sites/default/files/Documents/Technical/Material/PC%20Makrolon%202400\\_2407\\_2456\\_2458-UL.pdf](http://ledil.fi/sites/default/files/Documents/Technical/Material/PC%20Makrolon%202400_2407_2456_2458-UL.pdf)

- Optic holder molded by high quality PC material (120 dergees of Celcius / 248 degrees of Fahrenheit).

- Fastening to heat sink with a PU foam adhesive tape of automotive grade. Please find fastening details by clicking link: [http://www.ledil.com/datasheets/DataSheet\\_TAPE.pdf](http://www.ledil.com/datasheets/DataSheet_TAPE.pdf)

- Fastening to PCB with appropriate adhesive. By clicking link below you can find Ledil recommended glue options.

[http://www.ledil.com/datasheets/DataSheet\\_GLUES.pdf](http://www.ledil.com/datasheets/DataSheet_GLUES.pdf)

**NOTE 1: We advise customer to ensure the suitability and sufficiency of the bond in the end product. For example, mechanical stress, vibration and holes on the surface of the circuit board weaken the strength of the tape.**

**NOTE 2: Assembly to the surface must be made straight, so the tape bonds constant and balanced with fastening surface. Slanted assembly might cause unbalanced bond to the surface. All surfaces where tape is applied must be clean, dry and free from grease and dirt.**

**If cleaning of PCB surfaces is needed, please follow strictly the cleaning instructions of your LED manufacturer - this is important as cleaning shall under no circumstances damage LEDs or other electronics components on the PCB.**

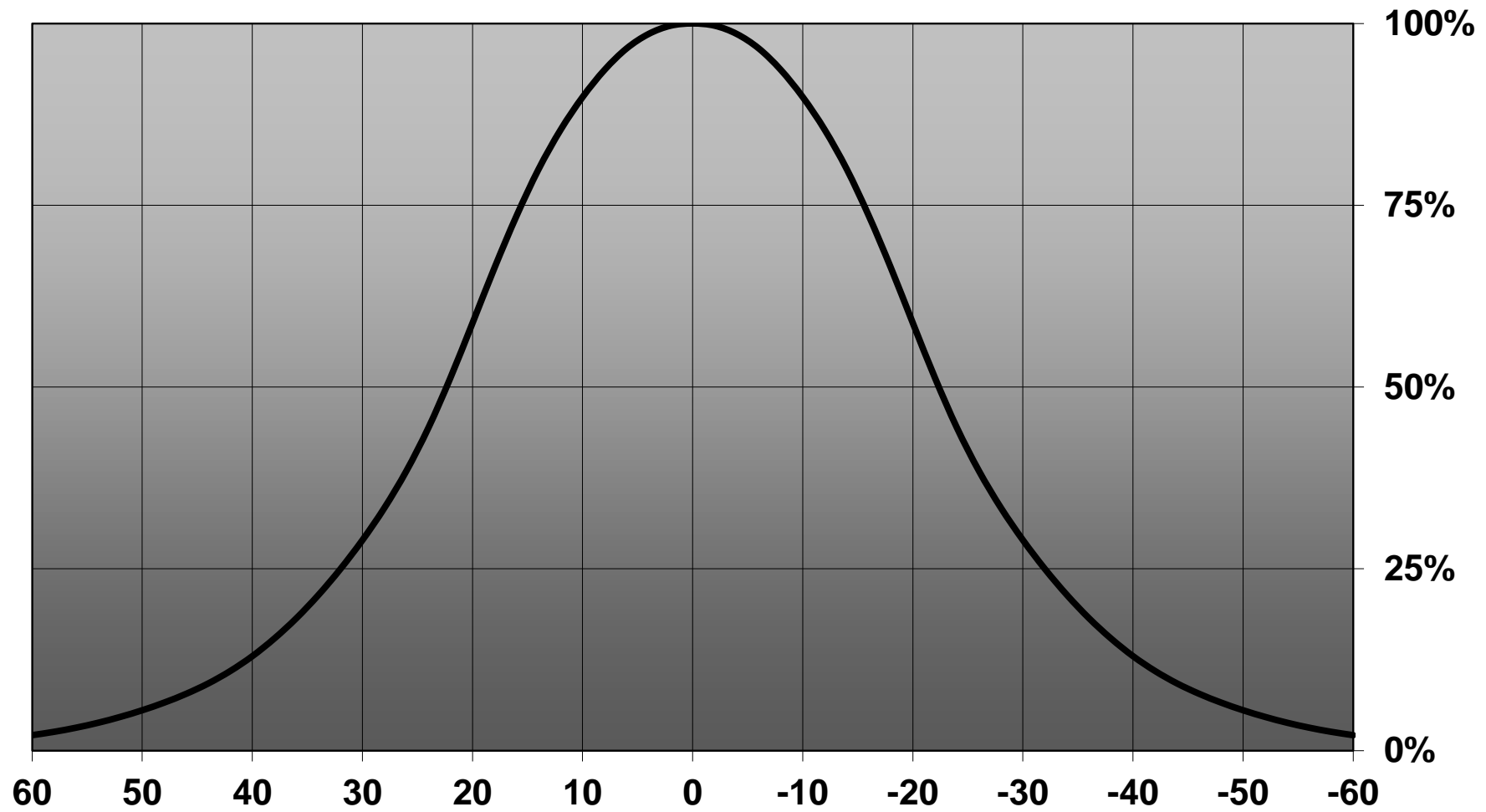
**Further note that optical components shall not be cleaned with any chemicals - only micro fiber cloth may be used to remove fingerprints or other traces from handling.**

**NOTE 1: We advise customer to ensure the suitability and sufficiency of the bond in the end product. For example, mechanical stress, vibration and holes on the surface of the circuit board weaken the strength of the glue.**

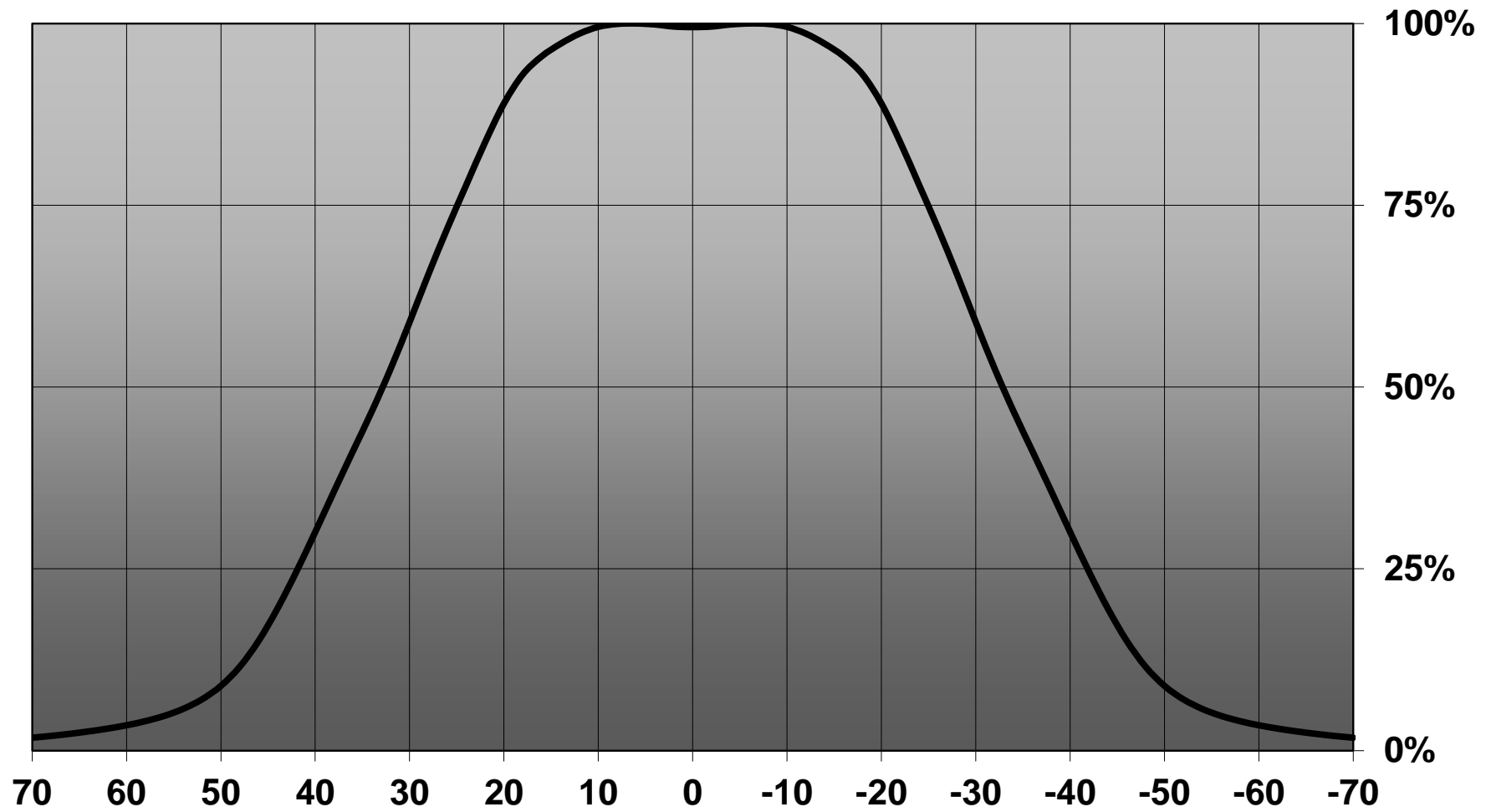
**NOTE 2: All surfaces where glue is applied must be clean, dry and free from grease and dirt. If cleaning of PCB surfaces is needed, please follow strictly the cleaning instructions of your LED manufacturer -this is important as cleaning shall under no circumstances damage LEDs or other electronics components on the PCB.**

**Further note that optical components shall not be cleaned with any chemicals - only micro fiber cloth may be used to remove fingerprints or other traces from handling.**

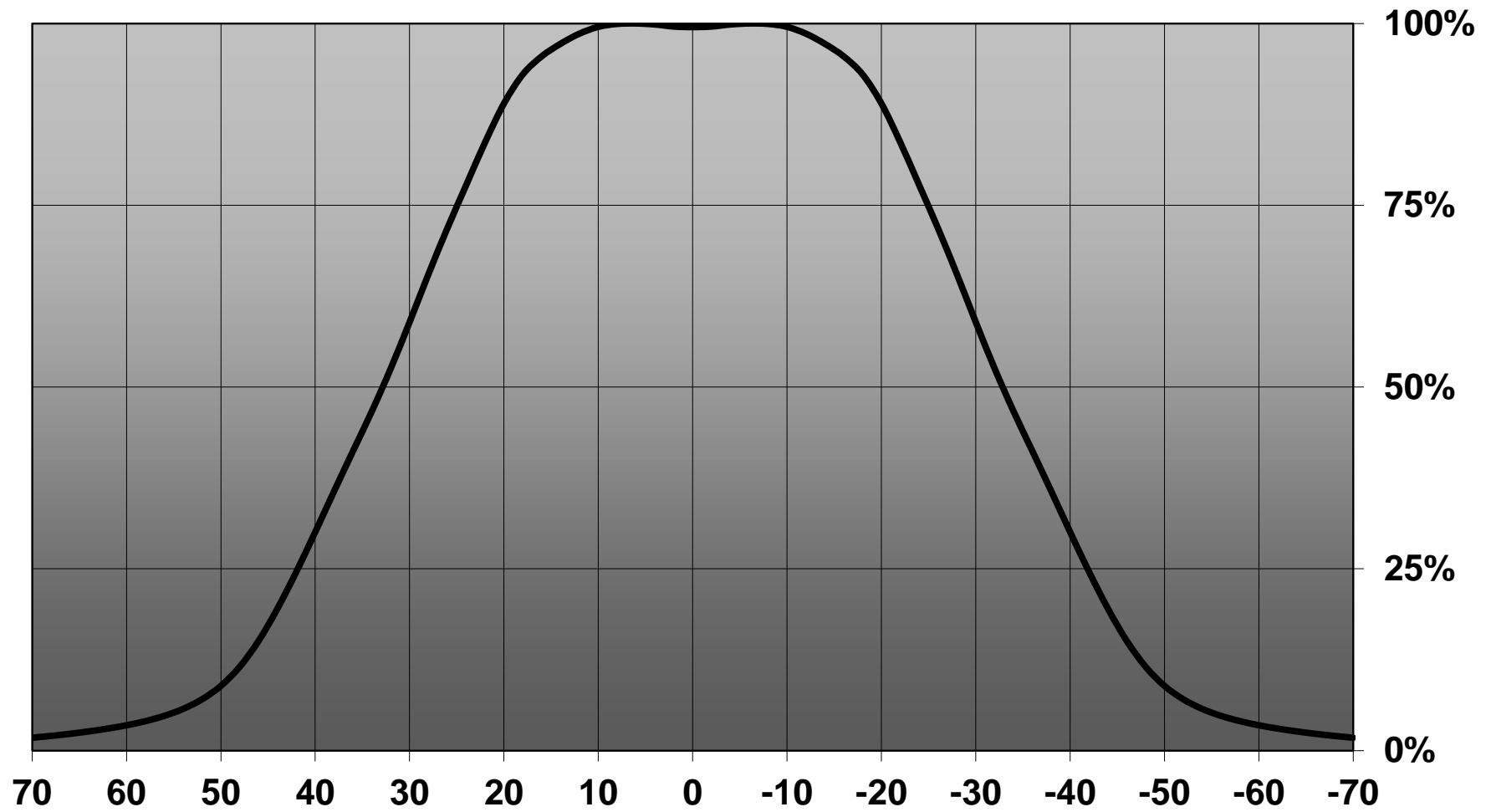
Relative intensity of C12501\_MIRA-W



Relative intensity of C12502\_MIRA-WW (MT-G)



Relative intensity of CA12505\_MIRA-WW (MT-G)

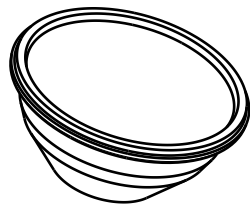


D

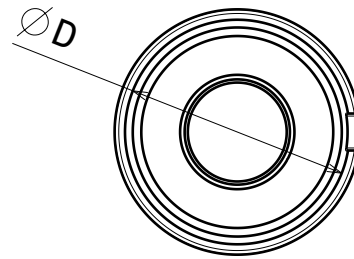
C

B

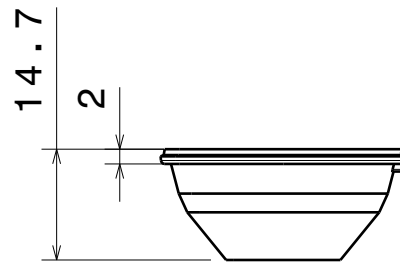
A



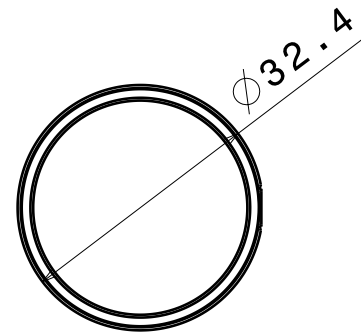
Isometric view



Bottom view



Front view



Top view

Dimension D:

- C12500\_MIRA-M 29,7mm
- C12501\_MIRA-W 28,4mm
- C12502\_MIRA-WW 28,4mm

Material: PC

This drawing is our property.  
It can't be reproduced  
or communicated without  
our written agreement.



Ledil Oy  
Salorankatu 10  
FIN 24240 SALO  
Finland

DRAWING TITLE

Datasheet MIRA lens

DRAWN BY

mav

DATE

02.04.2012

CHECKED BY

sn

DATE

02.04.2012

SIZE

A4

DRAWING NUMBER

-

REV

1

DESIGNED BY

mav

DATE

29.11.2011

SCALE

1:1

WEIGHT (g)

SHEET

1/1

D

A

4

4

3

3

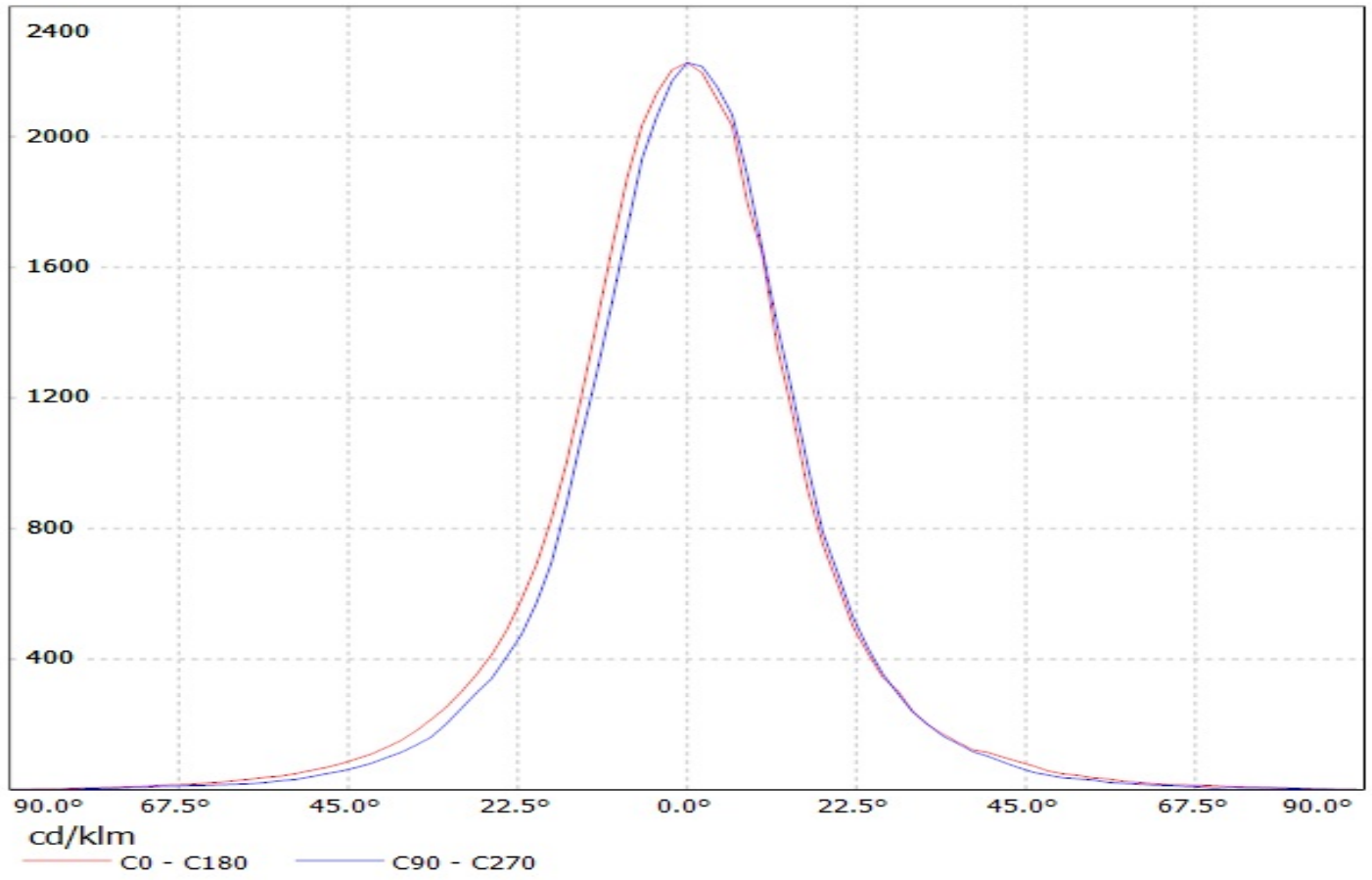
2

2

1

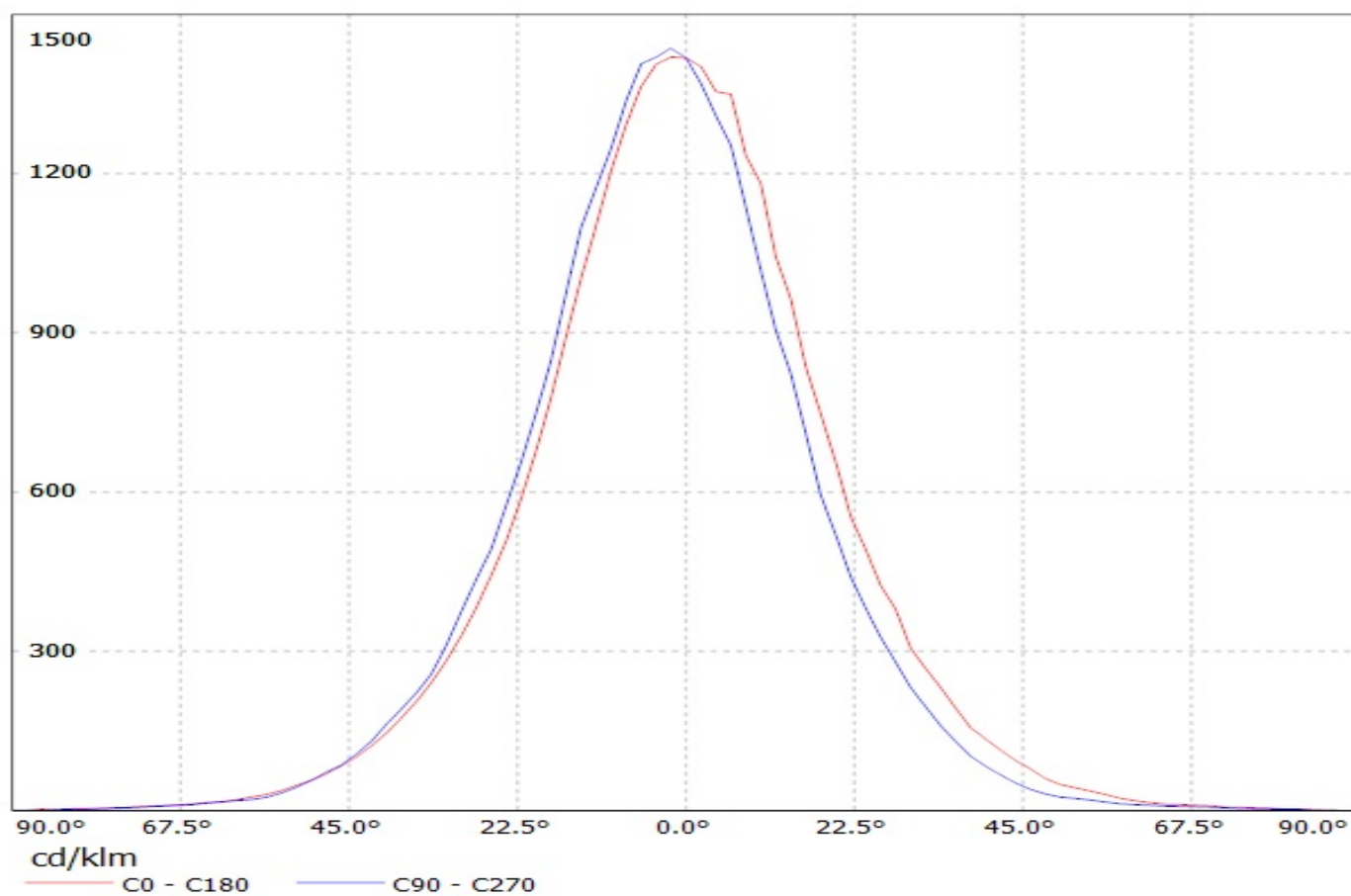
1

Luminaire: Ledil Oy C12500-Mira-M (Cree MT-G 714lm @ 250mA) Efficiency=83%  
Lamps: 1 x Cree MT-G 714lm @ 250mA

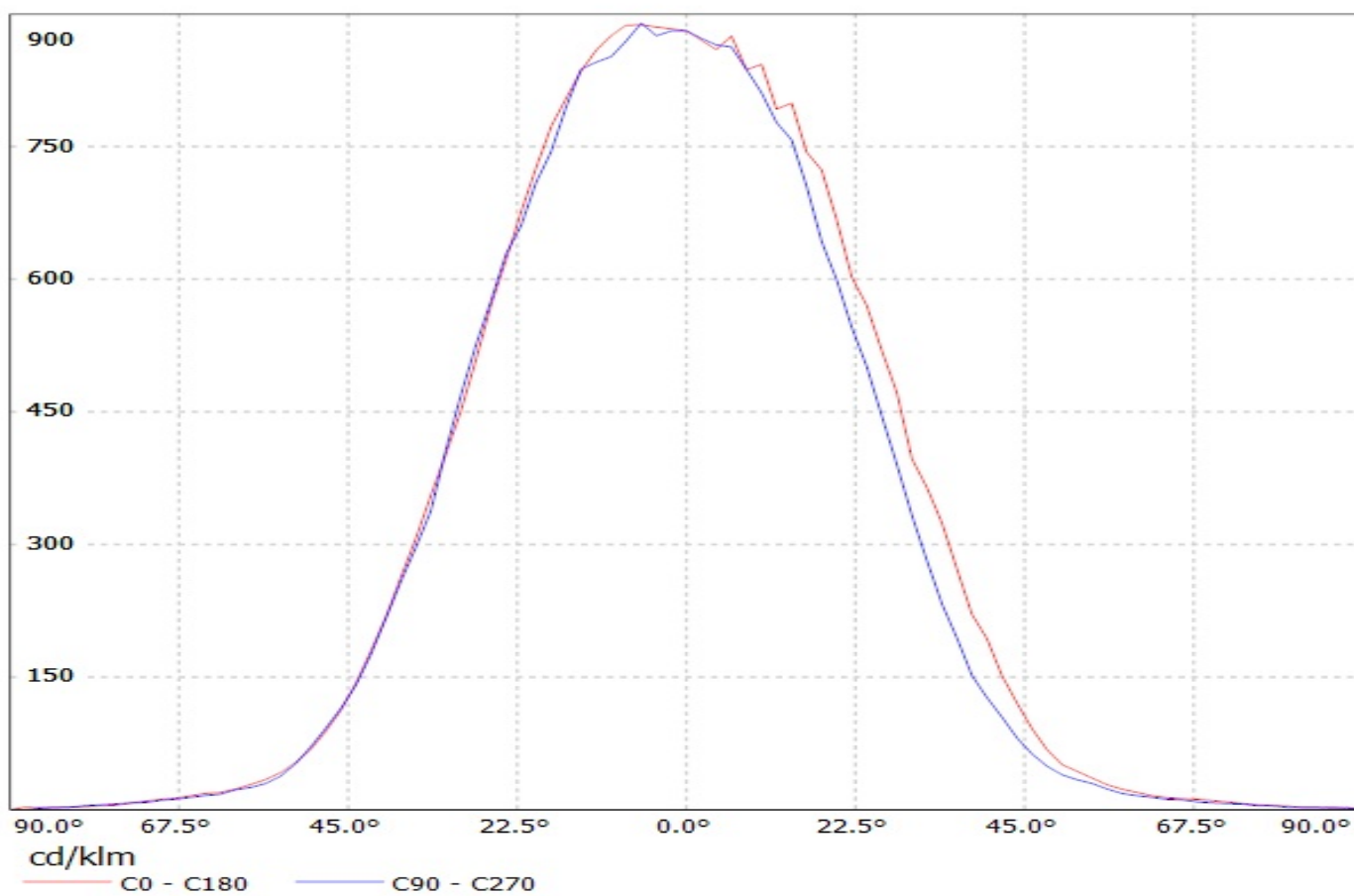




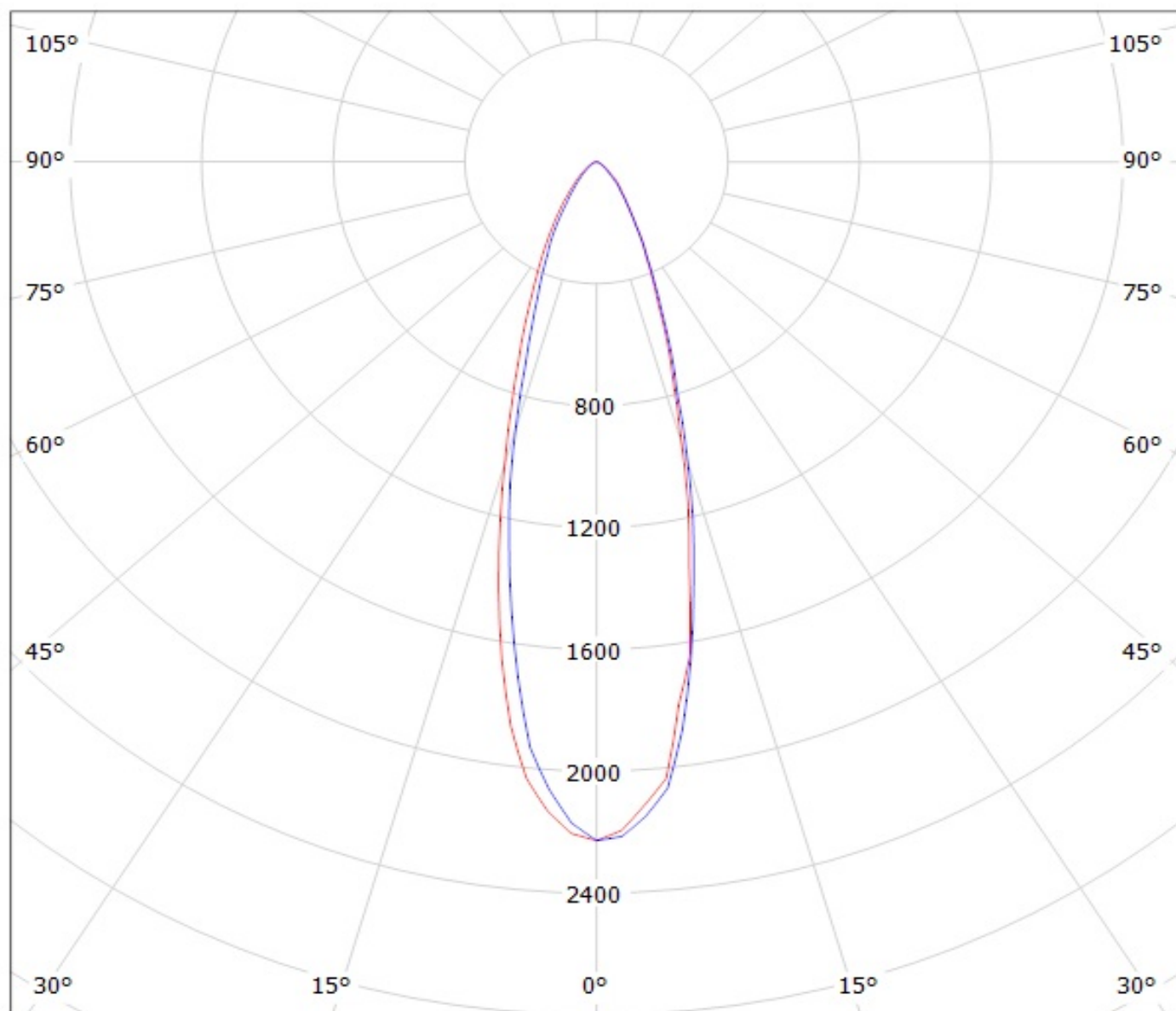
Luminaire: Ledil Oy C12501-Mira-W (Cree MT-G 714lm @ 250mA) Efficiency=80%  
Lamps: 1 x Cree MT-G 714lm @ 250mA



Luminaire: Ledil Oy C12502-Mira-WW (Cree MT-G 714lm @ 250mA) Efficiency=81%  
Lamps: 1 x Cree MT-G 714lm @ 250mA



Luminaire: Ledil Oy C12500-Mira-M (Cree MT-G 714lm @ 250mA) Efficiency=83%  
Lamps: 1 x Cree MT-G 714lm @ 250mA

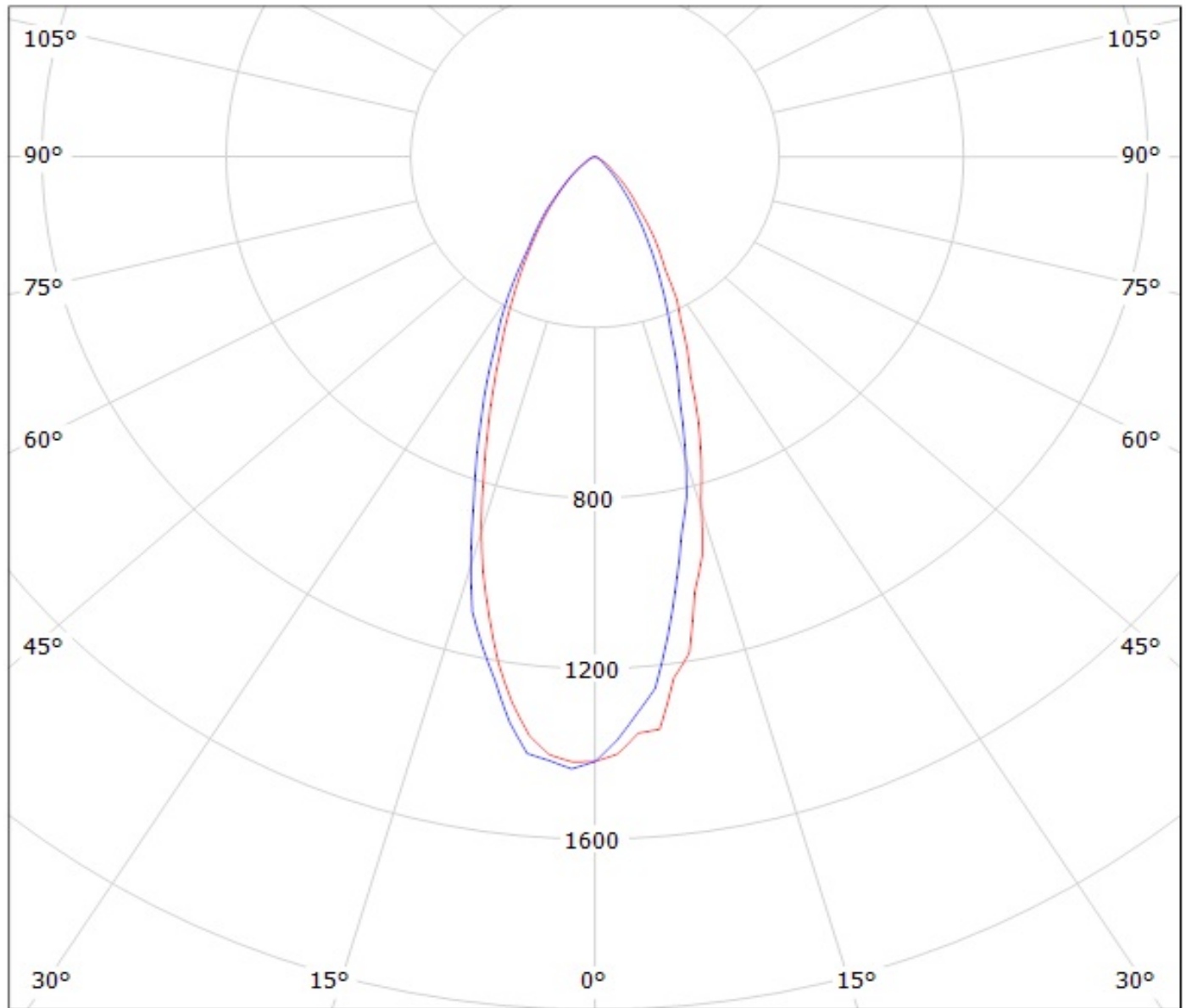


cd/klm

— C0 - C180

— C90 - C270

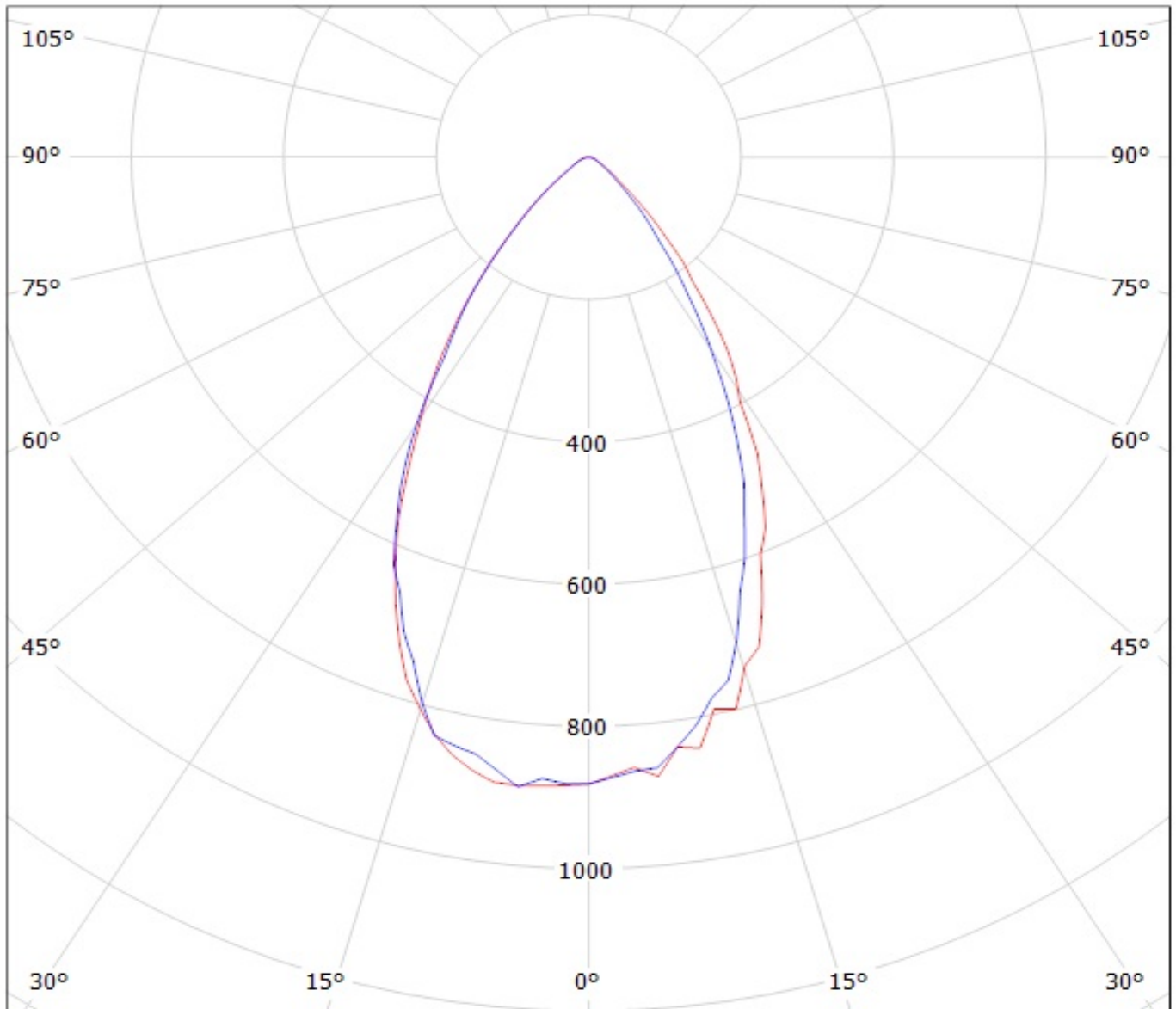
Luminaire: Ledil Oy C12501-Mira-W (Cree MT-G 714lm @ 250mA) Efficiency=80%  
Lamps: 1 x Cree MT-G 714lm @ 250mA



cd/klm

— C0 - C180    — C90 - C270

Luminaire: Ledil Oy C12502-Mira-WW (Cree MT-G 714lm @ 250mA) Efficiency=81%  
Lamps: 1 x Cree MT-G 714lm @ 250mA



cd/klm  
— C0 - C180    — C90 - C270