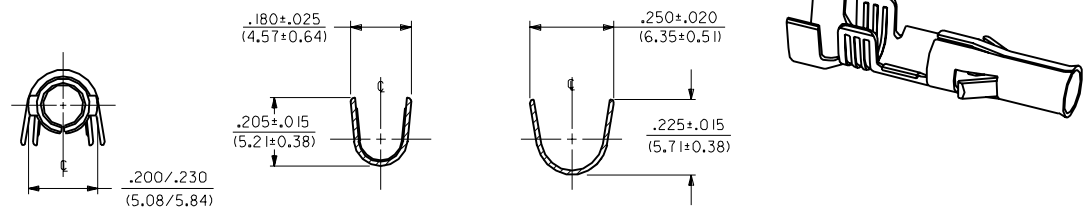
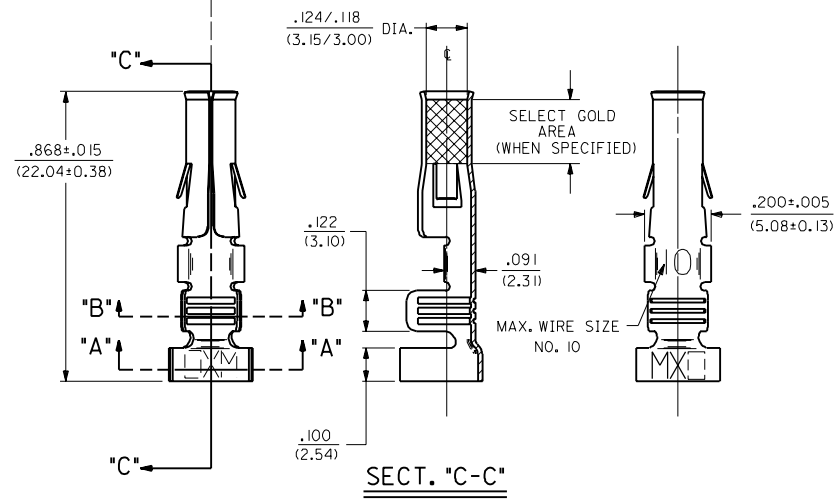
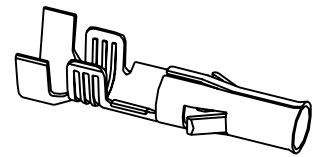


PART NO.	ENG. NO.	FLAT STOCK PART NO.
18-12-1602	1901-I(P901)L	80-02-1302
18-12-1601	1901-I(P901)	80-02-1302



SECT. "B-B" **SECT. "A-A"**

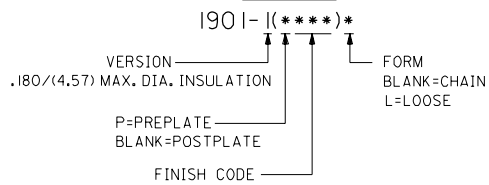


SECT. "C-C"

- NOTES:
1. TERMINAL FOR USE WITH .125/(3.17) SERIES HOUSINGS AND WILL ACCEPT 10 THRU 14 AWG WIRE HAVING A .180/(4.57) MAX. DIAMETER INSULATION.
 2. INSERTION FORCE: 6.0 LBS. MAX. WHEN TERMINAL IS INSERTED INTO .125/(3.17) DIA. CORE HOLE.
 3. PULL OUT FORCE: 30 LBS. MIN. RETENTION IN HOUSING.

FINISH CODES:
901 HOT TIN DIP .000020/(0.0005) MIN.

LEGEND



MATERIAL NOTES:
1. CARTRIDGE BRASS, ALLOY #C26000;
.013/(0.33) THICK, SPRING TEMPER

DIMENSIONS SHOWN METRIC (INCH)		▽ = 0	▼ = 0	REVISE ONLY ON CAD SYSTEM
UNLESS OTHERWISE SPECIFIED TOLERANCES: ANGULAR ± .05° TO 10°		TITLE: CRIMP TERMINAL, FEMALE, .125/(3.17) DIA 10-14 AWG .180/(4.57) DIA. INSUL.		
3 PLACE	± .010	MOLEX INCORPORATED		SHEET NO. DATE
2 PLACE	± .014 ± 0.25	L15LEJLL 60532 U.S.A.		1 OF 1 6/30/88
1 PLACE	--- ± 0.35	PART NO. SEE CHART DRWG. NO. SD-1901-I		
DRAFT WHERE APPLICABLE MUST REMAIN WITHIN DIMENSIONS		DRWG. BY: CEP	CHKD. BY: RW	FILE NAME: S19011X1.DWG
APP'D. BY: RAS	SCALE: 4:1	THIS DRAWING CONTAINS INFORMATION THAT IS PROPRIETARY TO MOLEX INC. AND SHOULD NOT BE USED WITHOUT WRITTEN PERMISSION.		SIV. CP

REV.	DESCRIPTION	DATE
E3	ADDED ISO VIEW UCR 98-05-20 WANG 98-05-20	
E2	OBS. -(P555) & -(P555)L ECR U6 03/12 9/1/95 RW	
E1	X-REMOVE -(P555) ECR U2 07/31 9/1/92 RW	
E	ADD SELECT AREA ECR U0 02/30 3-5-90 RW	
D	REVISE PER ECR U9 11/89 11-28-89 TRM	
C	REV. & REDRAWN ECR U8 16/02 GEP 6-13-88 RW	