

New Jersey Semi-Conductor Products, Inc.

20 STERN AVE.
 SPRINGFIELD, NEW JERSEY 07081
 U.S.A.

TELEPHONE: (201) 376-2922
 (212) 227-6005
 FAX: (201) 376-8960

PARAMETERS

2N4172

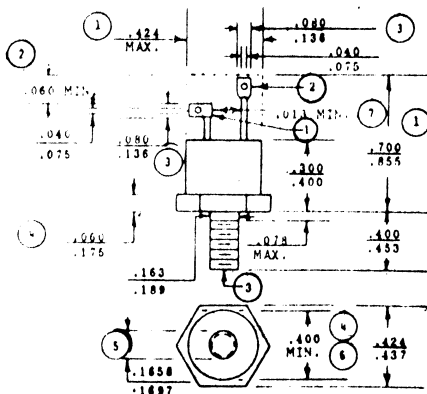
SCR, $V(DRM) = 400\text{ V TO } 499.9\text{ V}$

Description: SCR, $V(DRM) = 400\text{ V to } 499.9\text{ V}$

| | |
|-------------------------------------|---------------|
| Manufacturer..... | |
| Mil/High-Rel? (Y/N)..... | |
| $V(drm)$ Max..... | 400 |
| $I_t(stat)$ Max. (A)..... | 8.02 |
| @Temp. (test) ($^{\circ}C$)..... | 70# |
| Supp Curr. $I(TSM)$ | 100 <i>N</i> |
| Firing Char-Igt Max..... | 60 |
| Firing Char-Vgt Max..... | 2. |
| $I_d(off)$ Max. (A)..... | 2.0 <i>m</i> |
| @Temp. (test) ($^{\circ}C$)..... | 100 <i>u</i> |
| $I(h)$ Max. (A)..... | 60 |
| $V(T)$ Max..... | 2.0 |
| @ I_t (A)..... | 15 |
| Dv/Dt Worst Case..... | 50 <i>B</i> % |
| $t(switch)$ Off Typ. Time (S)... | 1.0 <i>u</i> |
| @ I_t (test) (A)..... | 5.0 |
| $t(switch)$ Off Typ. Time (S)... | 15 <i>u</i> |
| Oper. Temp ($^{\circ}C$) Min..... | -40 |
| Oper. Temp ($^{\circ}C$) Max..... | 100 <i>u</i> |
| Pkg Style..... | |
| Surface Mounted Yes/No..... | NO |

u Junction Temperature # Case Temperature % @ above 125 $^{\circ}C$ *B* Typical
2 $I_t(rms)$ *N* Over Full Temperature Range Measured at < 25 $^{\circ}C$
n Read-Write Cycle Time, Maximum

TO64



NOTES

1. The outline contour with exception of hexagon is optional within zone or dimension specified.
2. Minimum difference in terminal lengths to establish datum line for numbering terminals.
3. Contour and orientation of fixed terminal lugs are optional.
4. A chamfer (or undercut) on one or both ends of hexagonal portion is optional.
5. Fit diameter - thread 10-32 UNF-2A (coated). Reference (screw thread standards for federal services - handbook H-28).
6. Minimum diameter of seating plane.
7. Minimum spacing between terminals.



Quality Semi-Conductors