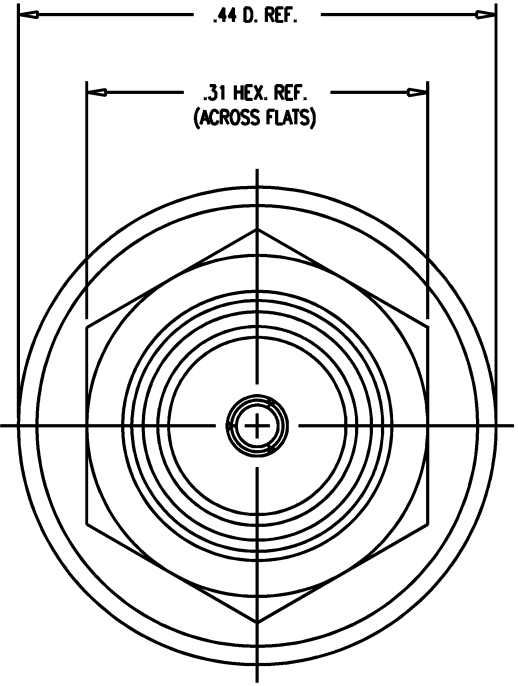
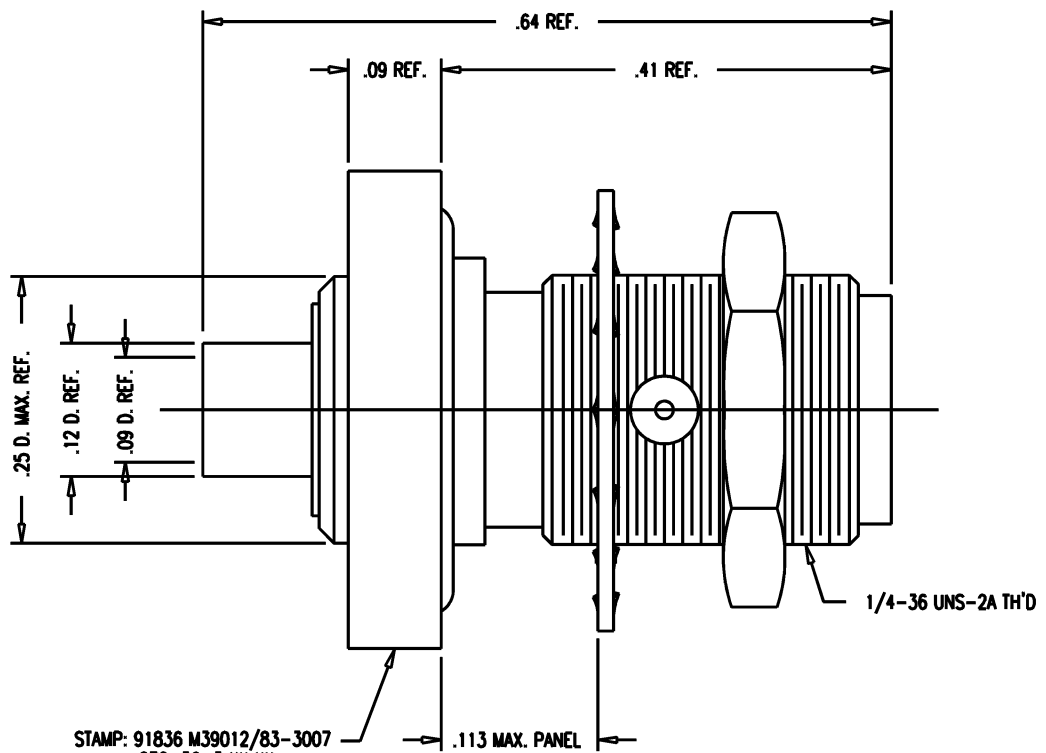


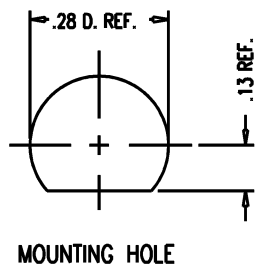
DASH NO.	M CODE	MADE FROM
----------	--------	-----------

GSD



STAMP: 91836 M39012/83-3007
 872-36-3 XX XX
 DATE CODE

- NOTES:
- FOR USE WITH RG-405/U (.085 S.R.) CABLE.
 - FOR CABLING INSTRUCTIONS SEE 3-481.
 - FOR CABLING TRIMMING USE KTO-3.
 - INTERFACE PER MIL-STD-348, FIG. 310-2.
 - MATERIALS:
 INSULATOR: ASTM-D-4894
 O-RING: SIL. RUB., ZZ-R-765
 CENTER CONTACT: BER. COP., ASTM-B-196
 ALL OTHER PARTS: STAINLESS STEEL, 303
 - FINISHES:
 SOLDER BODY } HARD GOLD PLT. PER MIL-G-45204
 CENTER CONTACT }
 ALL OTHER METAL PARTS: PASSIVATE PER QQ-P-35
 - ELECTRICAL CHARACTERISTICS:
 NOMINAL IMPEDANCE: 50 OHMS
 FREQUENCY RANGE: DC TO 18 GHz



M39012/83-3007

REVISIONS	
ISSUE	CHANGES
1	CN 32683 E RESTRICTED USAGE REDRAWN JCA 11/07/90
2	CN 32741 C KH 12/14/90
3	CN 32897 E RESTRICTION REMOVED JCA 02/21/91
4	CN 36721 C KH 12/13/95

872-36-3	JCA1077
SCALE	8:1
APPROX SURFACE AREA	
WAS:	E-14140
USED ON	
REF:	
JACK, BULKHEAD, SMA	
DRAWN	JCA 11/07/90
DESIGN	GA 11/08/90
APPR.	DATE
KINGS ELECTRONICS CO., INC. TUCKAHOE, NEW YORK 10707	
M39012/83-3007	

GSD