

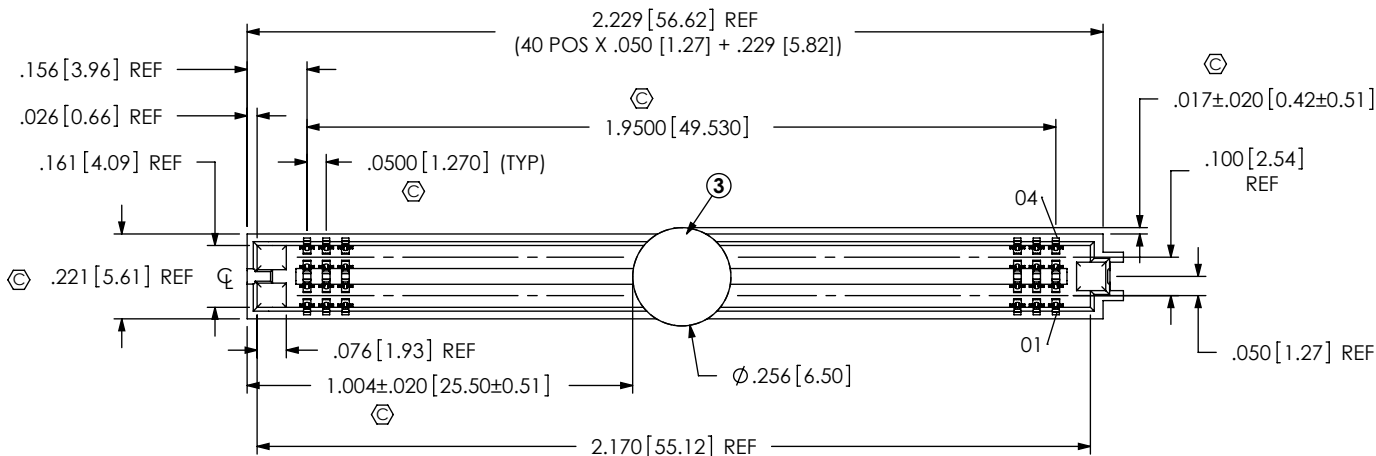
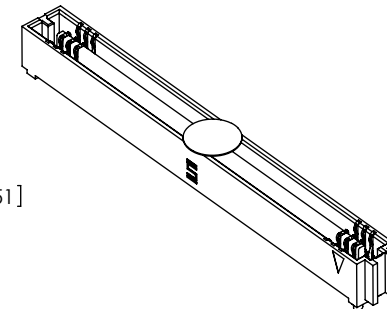
REVISION C

NOTES:

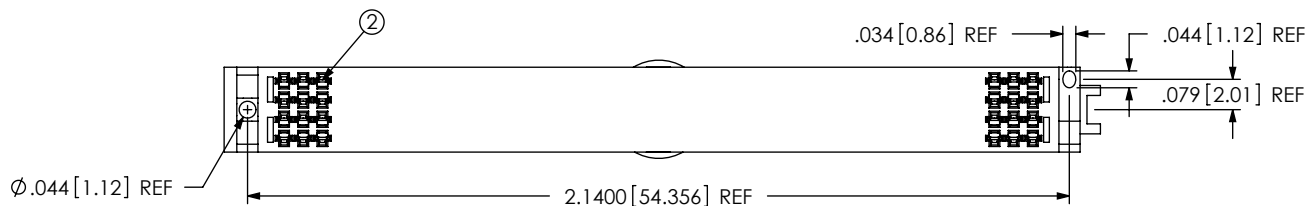
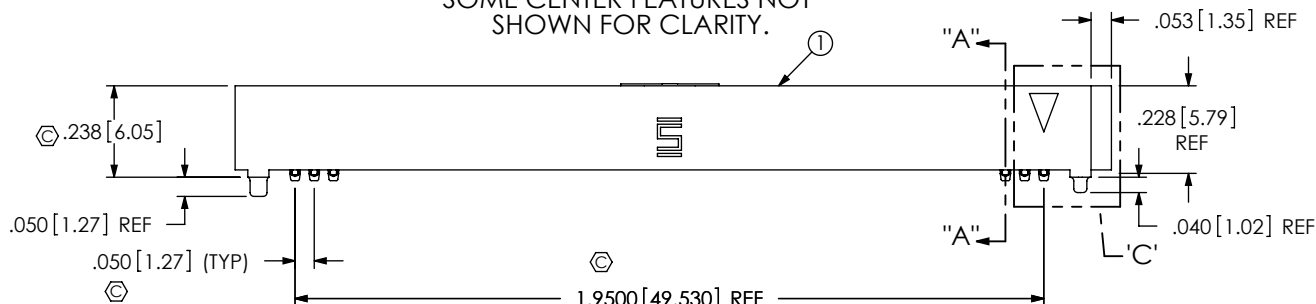
1. STANDARD PART SET UP AS ASP FOR HYPER TRANSPORT STANDARD. PLEASE NOTIFY STANDARDS@SAMTEC.COM FOR PRICING OR DESIGN QUESTIONS.
2. Ⓢ REPRESENTS A CRITICAL DIMENSION.
3. MINIMUM PUSHOUT FORCE: .75 LB.
4. PARTS TO BE PACKAGED IN TAPE & REEL. ATTACH LABEL "SEAX-0001" TO EACH TAPE & REEL PACKAGE.
5. DIMENSION C12 MUST BE MEASURED IN ALL FOUR CORNERS USING INSPECTION FIXTURE AT-1817-836-1. USE CO-AU-WI-2003-M FOR PROCESS.
6. MAXIMUM ROW TO ROW VARIATION: .003[.08].

ANY REVISION MADE TO THIS PRINT MUST HAVE AN UPDATED MKT PRINT

DO NOT SCALE FROM THIS PRINT



SOME CENTER FEATURES NOT SHOWN FOR CLARITY.



BY SIGNING THIS DOCUMENT YOU ARE ACCEPTING THE CONDITIONS SET WITHIN. YOUR REQUIREMENTS MUST BE LISTED WITHIN THIS DRAWING. WHERE NO DIRECTION FROM THE CUSTOMER IS IDENTIFIED SAMTEC'S PROCESS REQUIREMENTS WILL BE USED.

DATE: _____
 COMPANY: _____
 CUSTOMER SIGNATURE: _____
 PRINTED NAME: _____
 PHONE NO.: _____
 EXCEPTIONS: _____

NON STANDARD	
COMPONENT	
ASSEMBLY	
TOOLING	
PROCESS	
PACKAGING	
OTHER	X

UNLESS OTHERWISE SPECIFIED, DIMENSIONS ARE IN INCHES. TOLERANCES ARE:
 DECIMALS .XX: ±.01[.3]
 .XXX: ±.005[.13]
 .XXXX: ±.0020[.051]

PROPRIETARY NOTE
 THIS DOCUMENT CONTAINS INFORMATION CONFIDENTIAL AND PROPRIETARY TO SAMTEC, INC. AND SHALL NOT BE REPRODUCED OR TRANSFERRED TO OTHER DOCUMENTS OR DISCLOSED TO OTHERS OR USED FOR ANY PURPOSE OTHER THAN THAT WHICH IT WAS OBTAINED WITHOUT THE EXPRESSED WRITTEN CONSENT OF SAMTEC, INC.

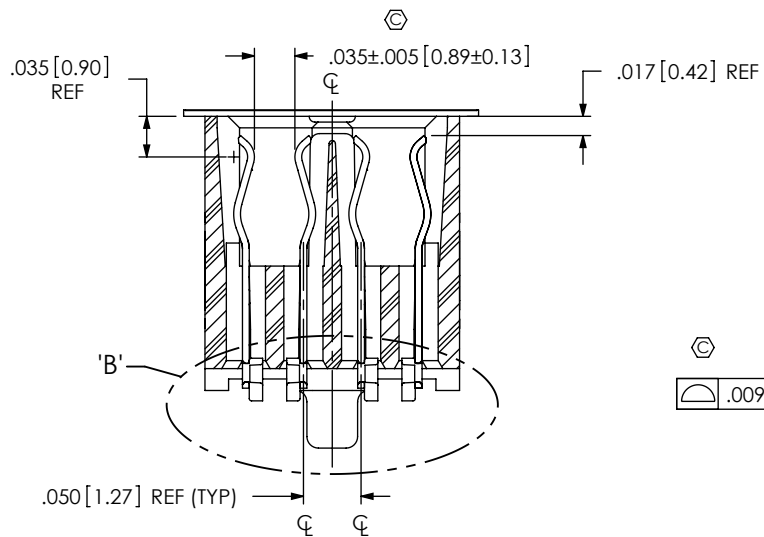
DO NOT SCALE DRAWING SHEET SCALE: 2:1
 PLATING:
 CONTACT AREA: .00010 MIN GOLD OVER .000050 MIN NICKEL
 REMAINDER: .000200 REF TIN OVER .000050 MIN NICKEL
 LEAD FREE SOLDER



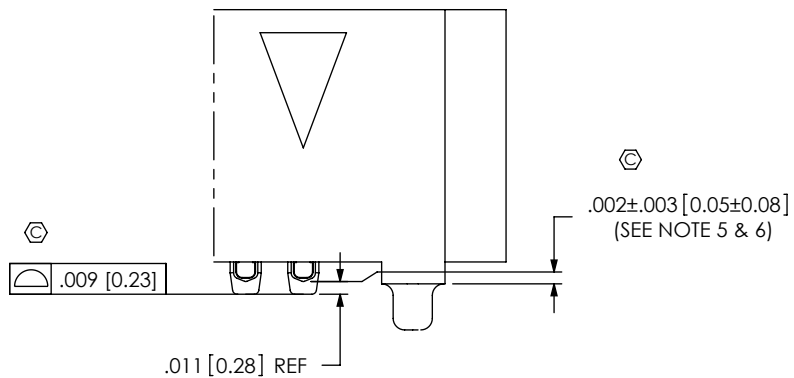
520 PARK EAST BLVD, NEW ALBANY, IN 47150
 PHONE: 812-944-6733 FAX: 812-948-5047
 e-Mail: info@SAMTEC.com code 53322

DESCRIPTION:	.050 SOCKET ARRAY ASSEMBLY
DWG. NO.	ASP-151798-02-06.0
BY: J. BROWNING 04/05/2010	SHEET 1 OF 2

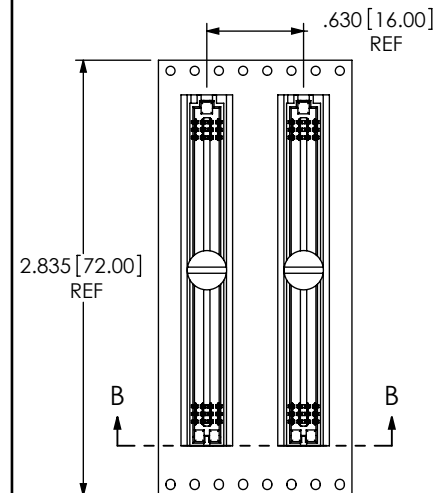
ITEM NO.	PART NUMBER	QUANTITY	MATERIAL
1	SEAF-40-06.0-04-A	1.0000	UL 94 V0, COLOR: BLACK
2	NEW-SUB-C-209-06.0-L-2	120.00	COPPER ALLOY/LEAD FREE SOLDER
3	K-DOT-.256-.375-.005	1.0000	POLYIMIDE FILM
4	CT-SEAF056MS	1.0000	CONDUCTIVE POLYMER



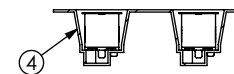
SECTION "A"-"A"
SCALE 6 : 1



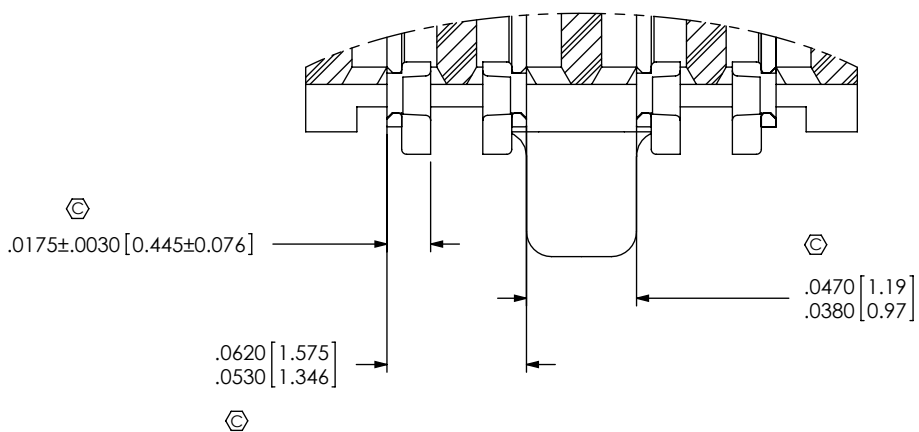
DETAIL 'C'
SCALE 6 : 1



USER DIRECTION OF UN-REELING
POCKET NOT DETAILED



SECTION "B"-"B"
SCALE 1 : 1.25



DETAIL 'B'
SCALE 13 : 1

PROPRIETARY NOTE

THIS DOCUMENT CONTAINS INFORMATION CONFIDENTIAL AND PROPRIETARY TO SAMTEC, INC. AND SHALL NOT BE REPRODUCED OR TRANSFERRED TO OTHER DOCUMENTS OR DISCLOSED TO OTHERS OR USED FOR ANY PURPOSE OTHER THAN THAT WHICH IT WAS OBTAINED WITHOUT THE EXPRESSED WRITTEN CONSENT OF SAMTEC, INC.



520 PARK EAST BLVD., NEW ALBANY, IN 47150
PHONE: 812-944-6733 FAX: 812-948-5047
e-Mail: info@SAMTEC.com code 55322

SHEET SCALE: 1.5:1

DESCRIPTION: .050 SOCKET ARRAY ASSEMBLY

DWG. NO. ASP-151798-02-06.0