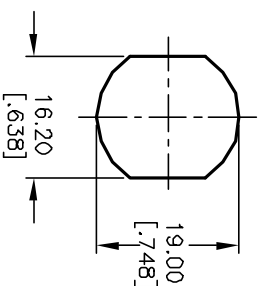


NOTES:

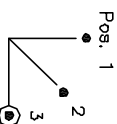
1. ALL DIMENSIONS IN MM [INCH]
2. GENERAL TOLERANCE: X.X=±0.4
X.XX=±0.25
3. TERM. NOS. FOR REF. ONLY
4. CONTACT RATING: 4A @125VAC/28VDC, 2A @250VAC
5. DIELECTRIC STRENGTH: 1KV RMS min. at sea level
6. ELECTRICAL LIFE: 10,000 make-and-break cycles at full load.
7. MATERIALS:

CONTACTS: Silver Plated Cu (Q Contact material)
 TERMINALS: GOLD Plated Cu (Q Contact material)
 MOUNTING NUT: Nickel Plated zinc alloy
 CONTACT SPRING: Piano Wire
 KEYS (2): Brass with code no. A126
 LOCK: Bright Ni plated zinc alloy with Ni facing
 TUMBLER Mechanism: 4-disc tumbler cylinder.



RECOMMENDED PANEL LAYOUT

CIRCUIT: SP (45° INDEXING) CONTACT CONFIGURATION		
SWITCH FUNCTION		
POS. 1	POS. 2	POS. 3
8-1	1-2	2-3



LEGEND

- =Detent Positions (45° or 90°)
- ⊙ =Key pull possible in these positions

C	11722	REVISED NOTES	10/10/01	CJB
REV.	ECN NO.	DESCRIPTION	DATE	CHK'D

TITLE		SCALE	DATE	DR	DWG	REV
K0130C-A126		1:1	10/10/01	CJB	K200212	C

E-SWITCH®

THE INFORMATION CONTAINED IN THIS DOCUMENT IS PREPARED FOR E-SWITCH AND IS NOT TO BE COPIED OR TRANSMITTED.