

PLEASE CHECK WWW.MOLEX.COM FOR LATEST PART INFORMATION

Part Number: [0008500113](#)
Status: **Active**
Overview: [kk](#)
Description: KK® Crimp Terminal, 22-30 AWG, Hot Tin (Sn) Dip, Nickel (Ni) Under Plating

Documents:

[Drawing \(PDF\)](#) [RoHS Certificate of Compliance \(PDF\)](#)
[Product Specification PS-10-07 \(PDF\)](#)

General

Product Family Crimp Terminals
 Series [2759](#)
 Crimp Quality Equipment Yes
 Overview [kk](#)
 Product Name KK®

Physical

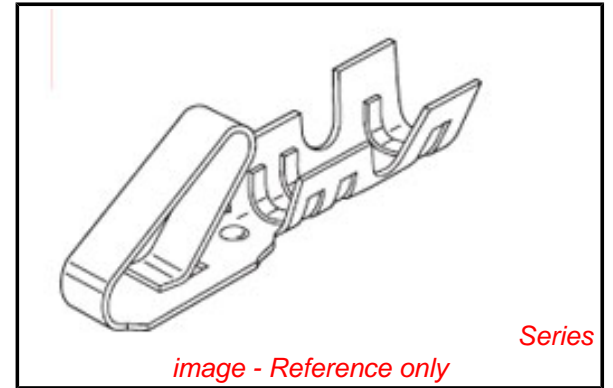
Gender Female
 Material - Metal Brass
 Material - Plating Mating Tin
 Material - Plating Termination Tin
 Packaging Type Reel
 Plating min: Mating (µin) 100
 Plating min: Mating (µm) 2.50
 Plating min: Termination (µin) 100
 Plating min: Termination (µm) 2.50
 Termination Interface: Style Crimp or Compression
 Wire Insulation Diameter 1.57mm (.062") max.
 Wire Size AWG 22, 24, 26, 28, 30
 Wire Size mm² N/A

Material Info

Old Part Number 2759-(P909)B

Reference - Drawing Numbers

Product Specification PS-10-07
 Sales Drawing SD-2759
 Test Summary TS-10-07



EU RoHS

ELV and RoHS Compliant
REACH SVHC
Contains SVHC: No
Halogen-Free Status

China RoHS



Need more information on product environmental compliance?

Email productcompliance@molex.com
 For a multiple part number RoHS Certificate of Compliance, [click here](#)

Please visit the [Contact Us](#) section for any non-product compliance questions.

Search Parts in this Series

[2759Series](#)

Use With

2695 , 5051 , 6745 , 41895

Application Tooling | FAQ

Tooling specifications and manuals are found by selecting the products below. Crimp Height Specifications are then contained in the Application Tooling Specification document.

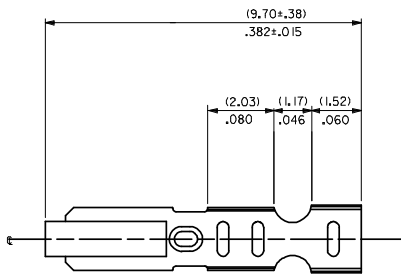
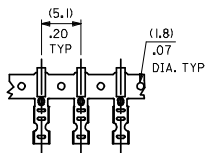
Global

Description	Product #
Mini-Mac™ Applicator, Use with Small Wire Insulation Diameter	0638882100
Mini-Mac™ Applicator, Use with Large Wire Insulation Diameter	0638882000
Extraction Tool	0011030022
Terminator Die	0011402265

This document was generated on 05/17/2010

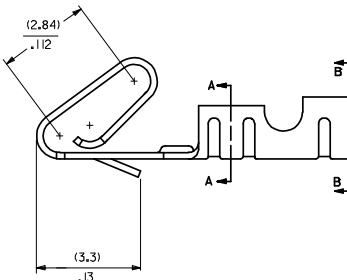
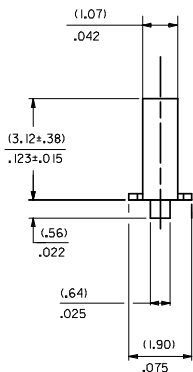
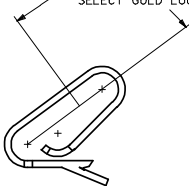
PLEASE CHECK WWW.MOLEX.COM FOR LATEST PART INFORMATION

CARRIER VIEW

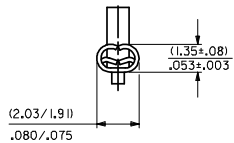


- NOTES
- MATERIAL
(0.203±0.010)/.0080±.0004 THICK BRASS
 - FINISH
 - 102 - OVERALL TIN: (0.00508)/.000200 MIN. TIN OVER (0.00254)/.000100 MIN. COPPER
 - 122 - OVERALL TIN: (0.00381)/.000150 MIN. TIN OVER (0.00076)/.000030 MIN. NICKEL
 - W909 - OVERALL HOT TIN DIP: (0.00254)/.000100 MIN.
 - 550 - SELECT GOLD (0.00038)/.000015 MIN. OVERALL GOLD FLASH: (0.00005)/.000002 MIN. OVERALL NICKEL UNDERPLATE: (0.00076)/.000030 MIN.
 - 555- SELECT GOLD (0.00038)/.000015 MIN. OVERALL NICKEL UNDERPLATE: (0.00076)/.000030
 - 558 - SELECT GOLD: (0.00076)/.000030 MIN. OVERALL GOLD FLASH: (0.00005)/.000002 MIN. OVERALL NICKEL UNDERPLATE: (0.00127)/.000050 MIN.
 - PRODUCT SPEC: PS-10-07
 - PACKAGING SPECIFICATION: NONE
 - CRIMP IS FOR 22-30 GA WIRE WITH (1.57)/.062 DIA INSULATION MAX.
 - INSERTION FORCE OF TERMINAL INTO (2.54)/.100 CENTERLINE CONNECTOR IS 2.5 LBS. MAX
 - TERMINALS WILL RETAIN 8 LBS PULL FOR 1 MIN. IN A (2.54)/.100 CENTERLINE HOUSING.
 - DIMENSIONS GIVEN ACROSS CENTERLINES ARE SYMMETRICAL ABOUT THOSE CENTERLINES WITHIN HALF THE TOTAL TOLERANCE.
 - CODE LETTER PRECEDING PART NO. DESIGNATES MANUFACTURING LOCATION.
I=IRELAND
 - THIS PART CONFORMS TO CLASS B REQUIREMENTS OF COSMETIC SPECIFICATION PS-45499-002.

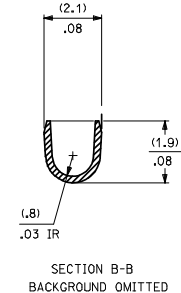
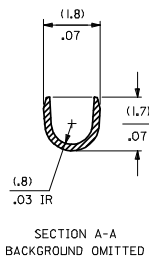
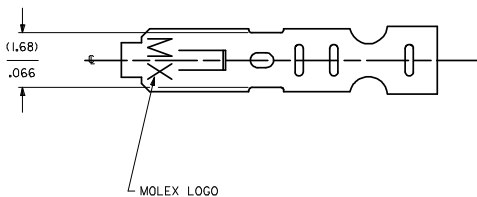
SELECT GOLD LOCATION



CRIMP DETAIL



CRIMPED TERMINAL 2759-IP90)LC IS USED WITHOUT WIRE AND IS INSERTED INTO HOUSING TO PROVIDE TENSION WHEN ASSEMBLED TO HEADERS DURING SHIPMENT.



- 2759-(***))
- FORM
 - L=LOOSE
 - C=LOOSE CRIMPED
 - A=CHAIN PER ES-339-A
 - B=CHAIN PER ES-339-B
- PLATING
SEE NOTE 2

SH REV 1 AS3 2 AS4	UPDATE DIMS DEC NO: UCP/2008-2190 2008/03/17 DRW: DRW: NADERR 2008/03/18 CHK: KOL: SCHMIDT 2008/03/18 APPR: F: SMITH 2008/03/24	QUALITY SYMBOLS =0 =0	GENERAL TOLERANCES (UNLESS SPECIFIED): mm INCH		DIMENSION STYLE MM/IN		SCALE	DESIGN UNITS	THIRD ANGLE PROJECTION
			4 PLACES ± --- ± --- 3 PLACES ± --- ± .010 2 PLACES ± 0.25 ± .014 1 PLACE ± 0.36 ± --- ANGULAR ± 1/2°	DRAWN BY: SAMIEC DATE: 07/28/87 CHECKED BY: PATTEL DATE: 07/28/87 APPROVED BY: LENZ DATE: 07/28/87	TITLE CRIMP TERMINAL 22-30 GA WIRE	MOLEX INCORPORATED MATERIAL NO. SD-2759 DOCUMENT NO. SD-2759	SHEET NO. 1 OF 2		
DRAFT WHERE APPLICABLE MUST REMAIN WITHIN DIMENSIONS			THIS DRAWING CONTAINS INFORMATION THAT IS PROPRIETARY TO MOLEX INCORPORATED AND SHOULD NOT BE USED WITHOUT WRITTEN PERMISSION						

2759-(***)*													
PART NO.	ENG. NO.	PART NO.	ENG. NO.	PART NO.	ENG. NO.	PART NO.	ENG. NO.	PART NO.	ENG. NO.	PART NO.	ENG. NO.	PART NO.	ENG. NO.
08-55-0101	2759-(555)B												
08-55-0102	2759-(555)L												
08-55-0126	2759-(555)A												
08-56-0109	2759-(550)B												
08-56-0110	2759-(550)L												
08-50-0113	2759-(P909)B												
08-50-0114	2759-(P909)L												
08-50-0124	2759-(P909)C												
08-51-0108	2759-(122)B												
	2759-(122)L												
I 08-50-0274	2759-(P909)B												
I 08-50-0275	2759-(P909)L												
I 08-50-0273	2759-(P909)A												
08-55-0130	2759-(558)B												
08-55-0131	2759-(558)L												
08-50-0160	2759-(102)L												
08-50-0159	2759-(102)												

REMOVE *999 PARTS EC NO: UCP2008-0722 DRAWN BY: 2007/08/02 CHKD: JRELL 2007/08/02 APPR: ESM: JH 2007/08/03 AS4 REV DESCRIPTION	QUALITY SYMBOLS	GENERAL TOLERANCES (UNLESS SPECIFIED)	DIMENSION STYLE	SCALE	DESIGN UNITS	THIRD ANGLE PROJECTION												
	$\nabla=0$ $\nabla=0$	<table border="1"> <tr><th>mm</th><th>INCH</th></tr> <tr><td>4 PLACES ± --- ± ---</td><td></td></tr> <tr><td>3 PLACES ± --- ± ---</td><td></td></tr> <tr><td>2 PLACES ± --- ± ---</td><td></td></tr> <tr><td>1 PLACE ± --- ± ---</td><td></td></tr> <tr><td>ANGULAR ±1/2°</td><td></td></tr> </table>	mm	INCH	4 PLACES ± --- ± ---		3 PLACES ± --- ± ---		2 PLACES ± --- ± ---		1 PLACE ± --- ± ---		ANGULAR ±1/2°		MM/IN	---	INCH	
	mm	INCH																
	4 PLACES ± --- ± ---																	
3 PLACES ± --- ± ---																		
2 PLACES ± --- ± ---																		
1 PLACE ± --- ± ---																		
ANGULAR ±1/2°																		
		DRAWN BY: SAMIEC DATE: 07/28/87 CHECKED BY: DATE: 07/28/87 APPROVED BY: LENZ DATE: 07/28/87	TITLE	CRIMP TERMINAL 22-30 GA WIRE														
		DRAFT WHERE APPLICABLE MUST REMAIN WITHIN DIMENSIONS	MATERIAL NO. SEE CHART SIZE D	DOCUMENT NO. SD-2759	MOLEX INCORPORATED													