

PLEASE CHECK WWW.MOLEX.COM FOR LATEST PART INFORMATION

Part Number: [0989821016](#)
Status: **Active**
Overview: [mox crimp terminals](#)
Description: 2.54mm (.100") Pitch MOX Receptacle Kit, Dual Row, 20 Circuits, Blue

Documents:

[Drawing \(PDF\)](#) [RoHS Certificate of Compliance \(PDF\)](#)

General

Product Family	Crimp Housings
Series	98982
Overview	mox crimp terminals
Product Name	MOX

Physical

Breakaway	No
Circuits (maximum)	20
Color - Resin	Blue
Gender	Receptacle
Glow-Wire Compliant	No
Keying to Mating Part	None
Lock to Mating Part	Yes
Material - Resin	Polyester
Number of Rows	2
Packaging Type	Bag
Panel Mount	No
Pitch - Mating Interface (in)	0.100 In
Pitch - Mating Interface (mm)	2.54 mm
Pitch - Term. Interface (in)	0.100 In
Pitch - Term. Interface (mm)	2.54 mm
Polarized to Mating Part	No
Ports	1
Stackable	No
Temperature Range - Operating	-40°C to +125°C

Electrical

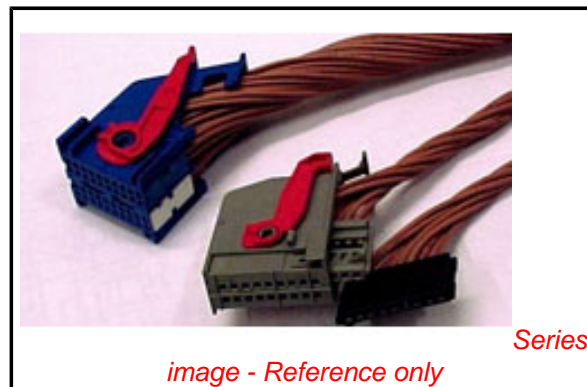
Current - Maximum per Contact	6A
-------------------------------	----

Material Info

Old Part Number	74106316
-----------------	----------

Reference - Drawing Numbers

Application Specification	AS-98982-001
Packaging Specification	PK-98982-002
Sales Drawing	SD-98982-001



EU RoHS

ELV and RoHS Compliant
REACH SVHC Contains SVHC: No
Halogen-Free Status
Not Reviewed

China RoHS



Need more information on product environmental compliance?

Email productcompliance@molex.com
 For a multiple part number RoHS Certificate of Compliance, [click here](#)

Please visit the [Contact Us](#) section for any non-product compliance questions.

Search Parts in this Series

[98982Series](#)

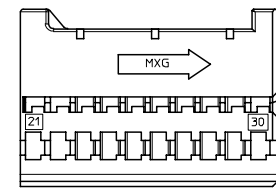
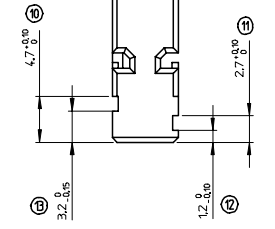
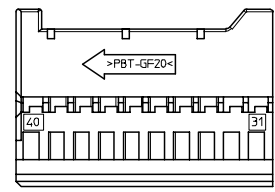
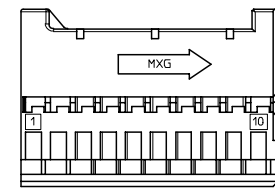
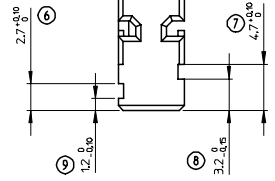
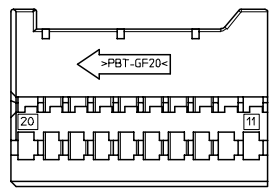
Mates With

Contact Molex

Use With

[98658](#) MOX Crimp Terminal

20 19 18 17 16 15 14 13 12 11 10 9 8 7 6 5 4 3 2 1



MOLEX P/N : 0989821016

DESCRIPTION : MOX Rcpt Module 0.635 Blu 20Ckt

COLOR : BLUE

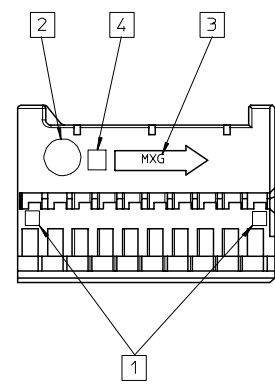
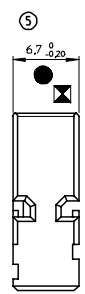
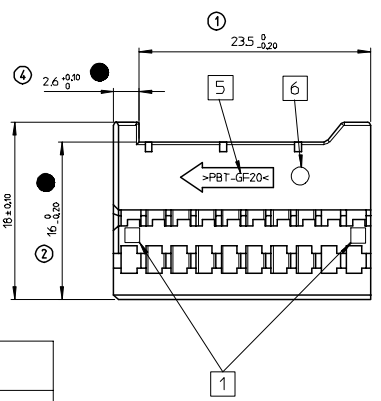
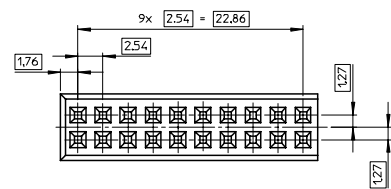
MOLEX P/N : 0989821010

DESCRIPTION : MOX Rcpt Module 0.635 Wht 20Ckt

COLOR : WHITE

MATERIAL : >PBT-GF20<

WEIGHT : 1.622 g



- FOR ILLUSTRATION PURPOSE, THE MOX RCPT MODULE SHOWN IS THE BLUE CODING P/N 0989821016. SEE CODING CHART FOR OTHER COLOR VERSION.

- PRODUCT QUALIFIED ACCORDING TO PSA STANDARD: 9629764699A.

- APPLICATION SPECIFICATION: RAS-98982-001

- INTERFACE DRAWING IS THE PROPERTY FROM PSA: 963329799.

- USE WITH MOX TERMINAL FOLLOWING SD-98658-004.

- THESE MODULES FIT INTO MOX MOUNTING HOUSING RECEPTACLE 40CKT P/N :

- 0989821020
- 0989821021
- 0989821026
- 0989821028



1:1

MARKING :

- 1 - CAVITY NUMBER
- 2 - DATUM MONTH/YEAR
- 3 - MOLEX MARK
- 4 - IMPRESSION MARK
- 5 - RAW MATERIAL
- 6 - REVISION LEVEL

INDICATION DIMENSIONS S.P.C DENOTES S.P.C DIMENSIONS
 INDICATION DIMENSIONS CRITIQUES DENOTES CRITICAL DIMENSIONS
 INDICATION DIMENSIONS FONCTIONNELLES DENOTES FUNCTIONAL DIMENSIONS
 QUANTITE PAR FEUILLE INDIVIDUELLE QUANTITY PER INDIVIDUAL SHEET
 1 0 3

FIRST RELEASE E.C. NO. 02008-0096 DRAWN BY: DRINGE POUCHAUD 2007/10/15 CHECKED BY: CHIKOTI LUEL 2007/10/15 APPR. BY: STICKE IR 2007/10/15	QUALITY SYMBOLS <input checked="" type="checkbox"/> 0 <input checked="" type="checkbox"/> 1	GENERAL TOLERANCES (UNLESS SPECIFIED) <table border="1"> <tr> <th></th> <th>mm</th> <th>INCH</th> </tr> <tr> <td>4 PLACES</td> <td>± 0.10</td> <td>± 0.004</td> </tr> <tr> <td>3 PLACES</td> <td>± 0.15</td> <td>± 0.006</td> </tr> <tr> <td>2 PLACES</td> <td>± 0.20</td> <td>± 0.008</td> </tr> <tr> <td>1 PLACE</td> <td>± 0.30</td> <td>± 0.012</td> </tr> </table>		mm	INCH	4 PLACES	± 0.10	± 0.004	3 PLACES	± 0.15	± 0.006	2 PLACES	± 0.20	± 0.008	1 PLACE	± 0.30	± 0.012	DIMENSION STYLE MM ONLY	SCALE 4:1	DESIGN UNITS METRIC	THIRD ANGLE PROJECTION
		mm	INCH																		
4 PLACES	± 0.10	± 0.004																			
3 PLACES	± 0.15	± 0.006																			
2 PLACES	± 0.20	± 0.008																			
1 PLACE	± 0.30	± 0.012																			
DRAFT WHERE APPLICABLE MUST REMAIN WITHIN DIMENSIONS		DRAWN BY: LPOUCHAUD 2007/09/07 CHECKED BY: YIGEL 2007/09/07 APPROVED BY: STICKE IR 2007/09/10	DATE: 2007/09/07 DATE: 2007/09/07 DATE: 2007/09/10	TITLE: MOX RCPT MODULE 20CKT																	
MATERIAL NO. SEE CHART			MOLEX INCORPORATED			SHEET NO. 1 OF 1															

19 18 17 16 15 14 13 12 11 10 9 8 7 6 5 4 3 2 1