



FEATURES

- ✧ Plastic package.
- ✧ Glass passivated chip junction.
- ✧ 500W Peak Pulse Power capability on 10/1000µs waveform.
- ✧ Excellent clamping capability.
- ✧ Repetition rate (duty cycle): 0.01%.
- ✧ Low incremental surge resistance.
- ✧ Fast response time: typically less than 1.0ps from 0 volt to BV for Bidirectional and 5.0ns for Unidirectional types.
- ✧ Typical I_R less than 1µA above 10V.
- ✧ High temperature soldering guaranteed: 265°C/10 seconds/.375", (9.5mm) lead length, 5lbs, (2.3kg) tension.



DO-204AC/DO-15

MECHANICAL DATA

- ✧ Case: JEDEC DO-15 Molded plastic over glass passivated junction.
- ✧ Terminals: Plated Axial leads, solderable per MIL-STD-750, Method 2026.
- ✧ Polarity: Color band denotes cathode except Bidirectional.
- ✧ Mounting Position: Any.
- ✧ Weight: 0.015 ounce, 0.4 grams.

DEVICES FOR BIPOLAR APPLICATION

For Unidirectional use C or CA suffix for type SA5.0 through type SA220 (e.g. SA5.0C, SA220CA); Electrical characteristics apply in both directions.

MAXIMUM RATINGS AND CHARACTERISTICS

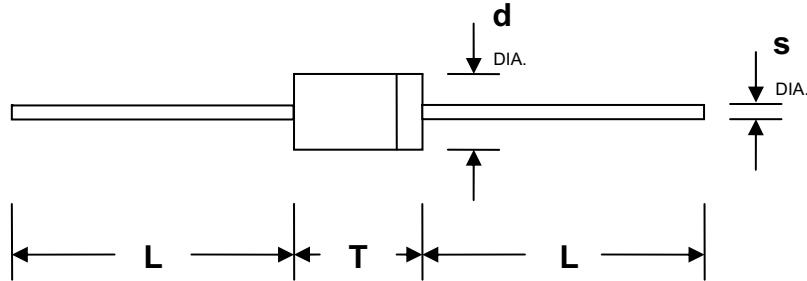
Ratings at 25°C ambient temperature unless otherwise specified.

RATING	SYMBOL	VALUE	UNIT
Peak Pulse Power Dissipation on 10/1000µs waveform. (Note 1, Fig. 1)	P_{PPM}	Minimum 500	Watts
Peak Pulse Current on 10/1000µs waveform. (Note 2, Fig. 2)	I_{PPM}	See Table	Amps
Steady State Power Dissipation at $T_L = 75^\circ\text{C}$, Lead length .375" (9.5mm). (Fig. 3)	$P_{M(AV)}$	3.0	Watts
Peak Forward Surge Current, 8.3ms Single Half Sine-Wave Superimposed on Rated Load. (JEDEC Method) (Note 2, Fig. 4)	I_{FSM}	70	Amps
Operating junction and Storage Temperature Range.	T_J, T_{STG}	-55 to +175	°C

- Notes:
1. Non-repetitive current pulse, per Fig. 1 and derated above $T_A = 25^\circ\text{C}$ per Fig. 2.
 2. 8.3ms single half sine-wave, or equivalent square wave, Duty cycle = 4 pulses per minute maximum.



PACKAGE DIMENSIONS



DO-204AC/DO-15

Item	Millimeters		Inches	
	Min.	Max.	Min.	Max.
L	25.40	-	1.000	-
T	5.80	7.60	0.230	0.300
d	2.60	3.60	0.104	0.140
s	0.71	0.86	0.028	0.034

SPECIFICATIONS

Part Number		Reverse Stand-Off Voltage	Breakdown Voltage MIN.@I _T	Breakdown Voltage MAX.@I _T	Test Current	Maximum Clamping Voltage @I _{PP}	Peak Pulse Current	Reverse Leakage @V _{RWM}
UNI-POLAR	BI-POLAR	V _{RWM} (V)	V _{BR} MIN.(V)	V _{BR} MAX.(V)	I _T (mA)	V _C (V)	I _{PP} (A)	I _R (μA)
SA5.0A	SA5.0CA	5.0	6.40	7.00	10	9.2	55.4	600
SA6.0A	SA6.0CA	6.0	6.67	7.37	10	10.3	49.5	600
SA6.5A	SA6.5CA	6.5	7.22	7.98	10	11.2	45.5	400
SA7.0A	SA7.0CA	7.0	7.78	8.60	10	12.0	42.5	150
SA7.5A	SA7.5CA	7.5	8.33	9.21	1	12.9	39.5	50
SA8.0A	SA8.0CA	8.0	8.89	9.83	1	13.6	37.5	25
SA8.5A	SA8.5CA	8.5	9.44	10.40	1	14.4	35.4	10
SA9.0A	SA9.0CA	9.0	10.00	11.10	1	15.4	33.1	5
SA10A	SA10CA	10.0	11.10	12.30	1	17.0	30.0	3
SA11A	SA11CA	11.0	12.20	13.50	1	18.2	28.0	1
SA12A	SA12CA	12.0	13.30	14.70	1	19.9	25.6	1
SA13A	SA13CA	13.0	14.40	15.90	1	21.5	23.7	1
SA14A	SA14CA	14.0	15.60	17.20	1	23.2	22.0	1
SA15A	SA15CA	15.0	16.70	18.50	1	24.4	20.9	1
SA16A	SA16CA	16.0	17.80	19.70	1	26.0	19.6	1



Part Number		Reverse Stand-Off Voltage	Breakdown Voltage MIN.@I _T	Breakdown Voltage MAX.@I _T	Test Current	Maximum Clamping Voltage @I _{PP}	Peak Pulse Current	Reverse Leakage @V _{RWM}
UNI-POLAR	BI-POLAR	V _{RWM} (V)	V _{BR} MIN.(V)	V _{BR} MAX.(V)	I _T (mA)	V _C (V)	I _{PP} (A)	I _R (μA)
SA17A	SA17CA	17.0	18.90	20.90	1	27.6	18.5	1
SA18A	SA18CA	18.0	20.00	22.10	1	29.2	17.5	1
SA20A	SA20CA	20.0	22.20	24.50	1	32.4	15.7	1
SA22A	SA22CA	22.0	24.40	26.90	1	35.5	14.4	1
SA24A	SA24CA	24.0	26.70	29.50	1	38.9	13.1	1
SA26A	SA26CA	26.0	28.90	31.90	1	42.1	12.1	1
SA28A	SA28CA	28.0	31.10	34.40	1	45.4	11.2	1
SA30A	SA30CA	30.0	33.30	36.80	1	48.4	10.5	1
SA33A	SA33CA	33.0	36.70	40.60	1	53.3	9.6	1
SA36A	SA36CA	36.0	40.00	44.20	1	58.1	8.8	1
SA40A	SA40CA	40.0	44.40	49.10	1	64.5	7.9	1
SA43A	SA43CA	43.0	47.80	52.80	1	69.4	7.3	1
SA45A	SA45CA	45.0	50.00	55.30	1	72.7	7.0	1
SA48A	SA48CA	48.0	53.30	58.90	1	77.4	6.6	1
SA51A	SA51CA	51.0	56.70	62.70	1	82.4	6.2	1
SA54A	SA54CA	54.0	60.00	66.30	1	87.1	5.9	1
SA58A	SA58CA	58.0	64.40	71.20	1	93.6	5.4	1
SA60A	SA60CA	60.0	66.70	73.70	1	96.8	5.3	1
SA64A	SA64CA	64.0	71.10	78.60	1	103.0	5.0	1
SA70A	SA70CA	70.0	77.80	86.00	1	113.0	4.5	1
SA75A	SA75CA	75.0	83.30	92.10	1	121.0	4.2	1
SA78A	SA78CA	78.0	86.70	95.80	1	126.0	4.0	1
SA85A	SA85CA	85.0	94.40	104.00	1	137.0	3.7	1
SA90A	SA90CA	90.0	100.00	111.00	1	146.0	3.5	1
SA100A	SA100CA	100.0	111.00	123.00	1	162.0	3.1	1
SA110A	SA110CA	110.0	122.00	135.00	1	177.0	2.9	1
SA120A	SA120CA	120.0	133.00	147.00	1	193.0	2.6	1
SA130A	SA130CA	130.0	144.00	159.00	1	209.0	2.4	1
SA150A	SA150CA	150.0	167.00	185.00	1	243.0	2.1	1
SA160A	SA160CA	160.0	178.00	197.00	1	259.0	2.0	1
SA170A	SA170CA	170.0	189.00	209.00	1	275.0	1.9	1
SA180A	SA180CA	180.0	198.00	233.00	1	289.0	1.7	1
SA190A	SA190CA	190.0	209.00	243.20	1	308.0	1.6	1
SA200A	SA200CA	200.0	220.00	256.00	1	324.0	1.5	1
SA210A	SA210CA	210.0	231.00	268.80	1	340.0	1.5	1
SA220A	SA220CA	220.0	242.00	281.60	1	356.0	1.4	1

Note: For Bidirectional type having V_{RWM} of 10 volts and less,the I_R limit doubles.



RATING AND CHARACTERISTIC CURVES (T_A: 25°C UNLESS OTHERWISE SPECIFIED)

Figure 1 - Peak Pulse Power Rating Curve

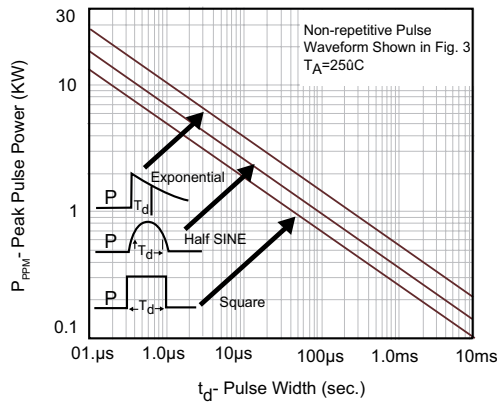


Figure 2 - Pulse Derating Curve

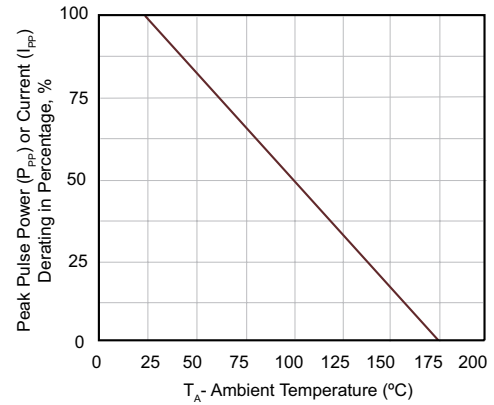


Figure 3 - Pulse Waveform

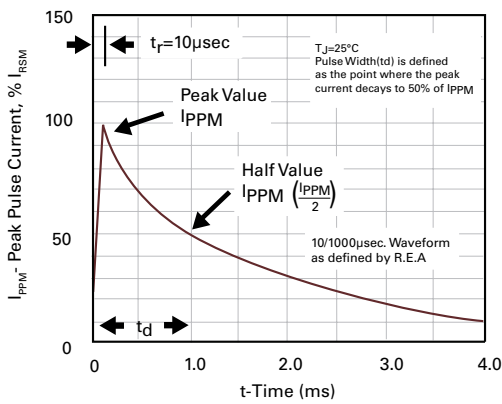


Figure 4 - Typical Junction Capacitance

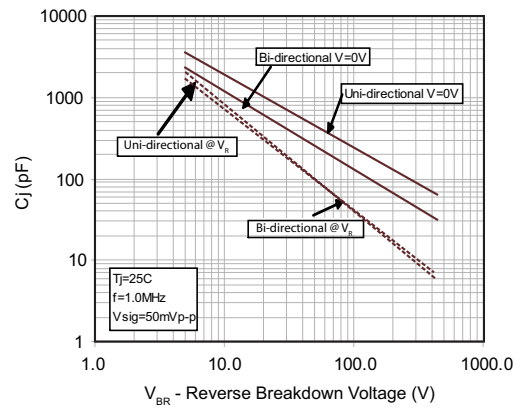


Figure 5 - Steady State Power Dissipation Derating Curve

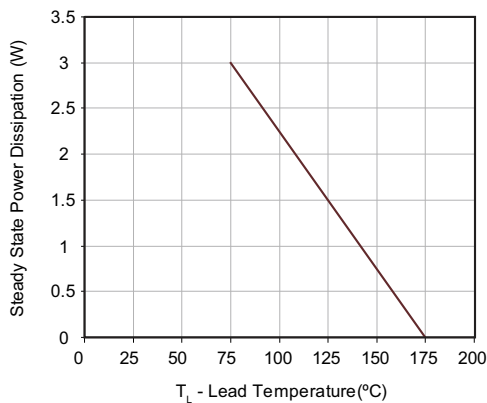


Figure 6 - Maximum Non-Repetitive Forward Surge Current Uni-Directional Only

