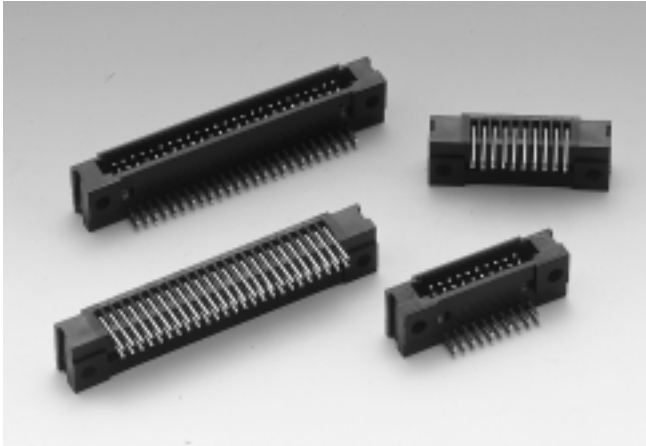


1.27X1.27mm DUAL ROW BOX HEADER RIGHT ANGLE DIP TYPE

(H: 6.0 mm)



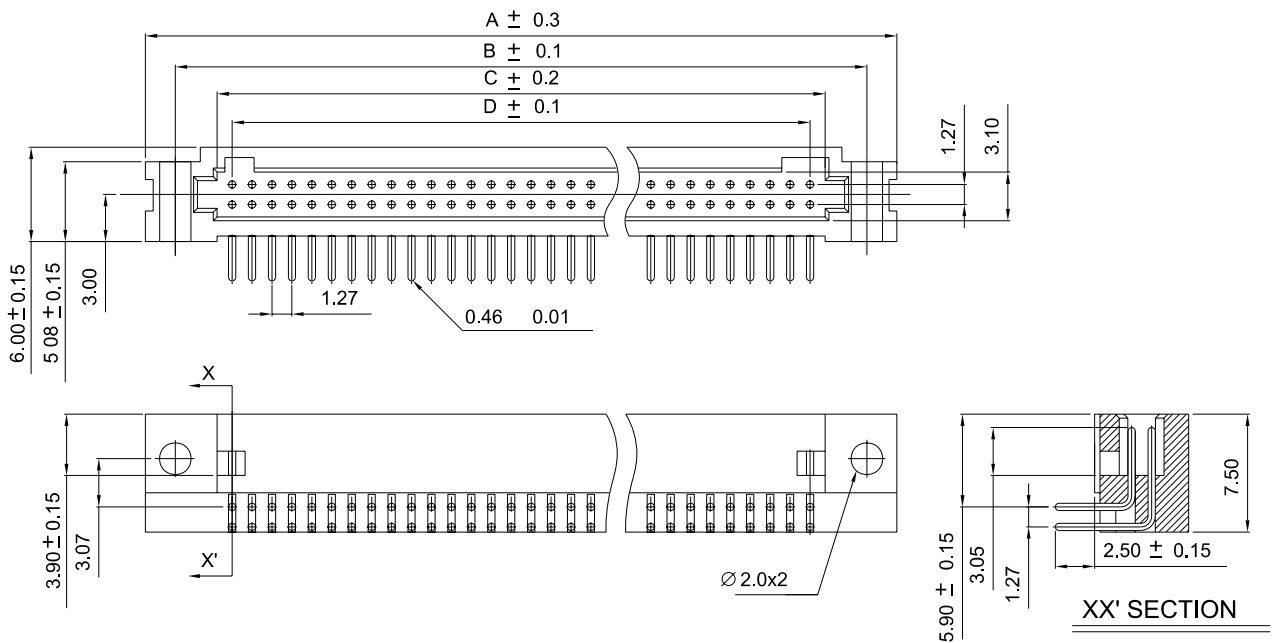
127155MR Series

Mates with SUYIN 127150, 127151 Series

Specifications:

- 10-100 Circuits
- Insulator material : Black High Temp . Plastic
- Operating Temp.Range :-40°C to +105°C
- Terminal Material : Brass
- Plating : Contact-Gold Plated
- Max. Current Rating : 1.0A
- Voltage Rating : 150V AC
- Dielectric Strength : 500V (Min. 60 seconds)

1.27
mm



Order Information

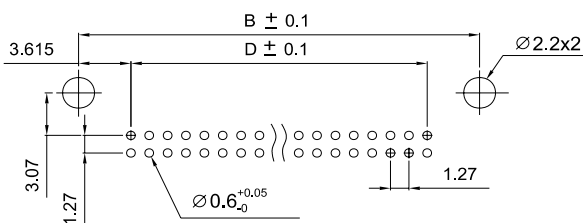
127155MR□□□□02ZU
1 2 3 4 5

1. 'R': Right Angle DIP Type
2. No. of Pins
3. Plating
4. Color 'Z': Black
5. Package

'U': Tube Package Without CAP

Reference Page 11

Recommended P.C.B. Layout



Dimensional Information I

SUYIN P/NO.	NO. PINS	DIM.A	DIM.B	DIM.C	DIM.D
127155MR010□□□02ZU	10	16.12	12.31	7.08	5.08
127155MR020□□□02ZU	20	2.47	18.66	13.43	11.43
127155MR030□□□02ZU	30	28.82	25.01	19.78	17.78
127155MR040□□□02ZU	40	35.17	31.36	26.13	24.13
127155MR050□□□02ZU	50	41.52	37.71	32.48	30.48
127155MR060□□□02ZU	60	47.88	44.07	38.84	36.84
127155MR070□□□02ZU	70	54.22	50.41	45.18	43.18
127155MR080□□□02ZU	80	60.57	56.76	51.53	49.53
127155MR090□□□02ZU	90	66.92	63.11	57.88	55.88
127155MR100□□□02ZU	100	73.27	69.46	64.23	62.23