

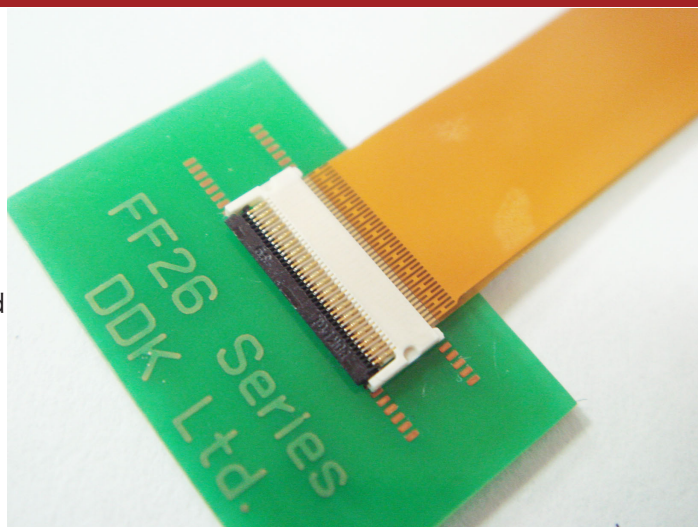
0.20 mm Pitch Ultra-low Profile FPC Back-lock Connector

FF26 Series [Upper Contact]

DDK Ltd.

OUTLINE

FF26 series is 0.2mm pitch, depth 3.80mm and 0.66mm connector height.
Ultra-low profile FPC connector .



FEATURE

- DDK's original rotate oval cam lock mechanism; "Back-lock" system ensure the reliable connection.
- The contact position is upper contact.
- Back-lock structure enables to retain FPC against pulling upward direction.
- Connectors deliver with the lock lever opened. Time saving for FPC inserting operation.
- Halogen free correspondence presence

Note : Please do not close the lock lever without inserting the FPC.

APPLICATIONS

Mobile phone, notebook PC, PDA, other Portable devices

SPECIFICATIONS

Rated Voltage	50V AC (r.m.s.)
Rated Current	0.2A / Contact
Dielectric Withstanding Dimensions	200V AC (r.m.s.) / 1 minute
Insulation Resistance	50 M Ω min. at 250V DC
Contact Resistance	80m Ω max.

MATERIAL/FINISH



Item	Material / Finish
Conatct	Copper Alloy / Au (Flash) over Ni
Housing	LCP Resin (UL94V-0) / Ivory
Lock lever	PPS Resin (UL94V-0) / Black

© Specifications and/or dimensions in this catalogue are subject to change without notice.

110630 Your catalogue checking the latest specifications with our drawings would be highly appreciated.

<http://www.ddknet.co.jp>

▶ 0.20mm Pitch FPC Connector (Upper Contact)

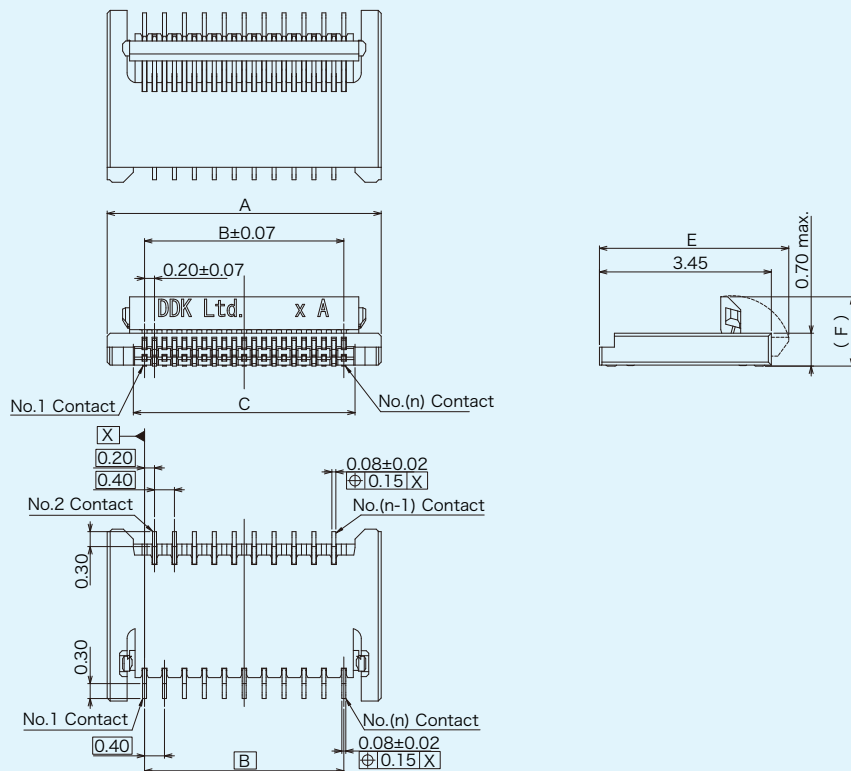
FF26- □□ A-R 1 1 A-3H

① ② ③ ④ ⑤ ⑥ ⑦ ⑧

① Series	FF26
② Number of Contact	Refer to th table 1
③ Contact Position	A : Upper Contact Applicable PCB Thickness : 0.12±0.03mm
④ Contact Style	R : Right Angle
⑤ Contact Tail Length	1 : 0.30mm
⑥ Contact Plating	1 : Au (Flash) over Ni
⑦ Lock Lever Style	A : Standard B : Long Type
⑧ Material	3H : Halogen Free Correspondence No Digit : Without Halogen Free Correspondence

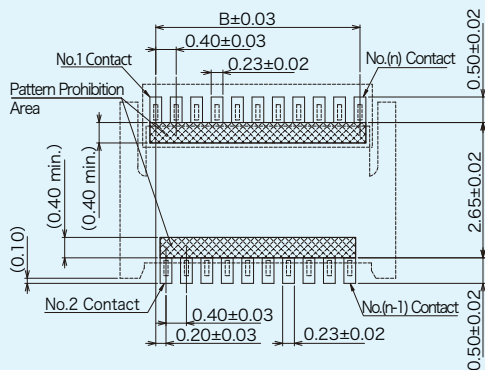
Dimensions

Odd Number of Contact

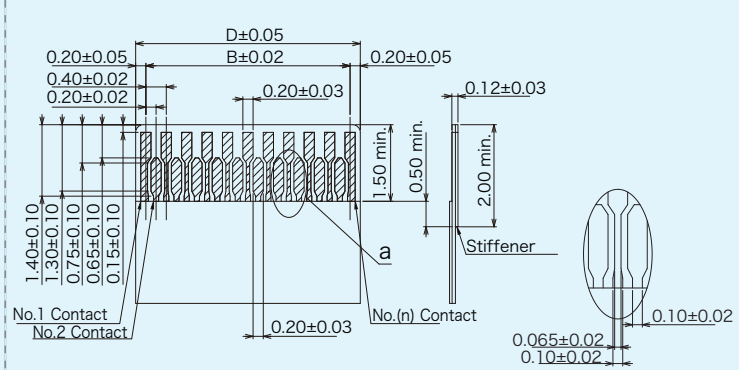


Recommended PCB Mounting Dimensions

Contacts are arranged zigzag on from No.1 contact.



Recommended FPC Dimensions



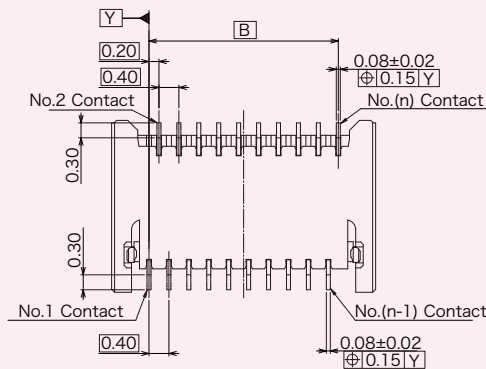
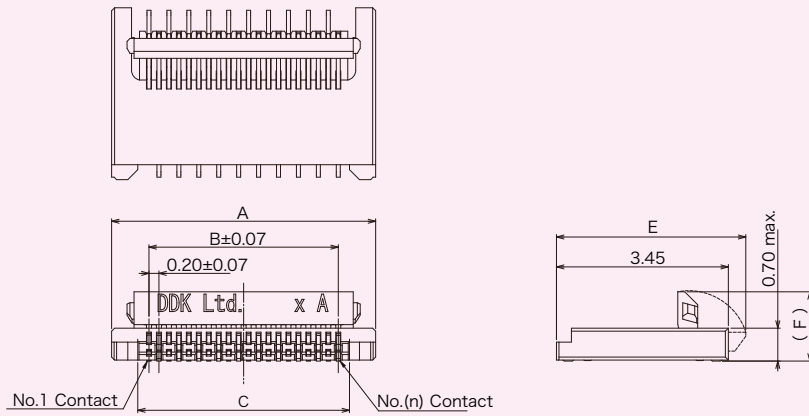
Section a

© Specifications and/or dimensions in this catalogue are subject to change without notice.
Your catalogue checking the latest specifications with our drawings would be highly appreciated.

▶ 0.20mm Pitch FPC Connector (Upper Contact)

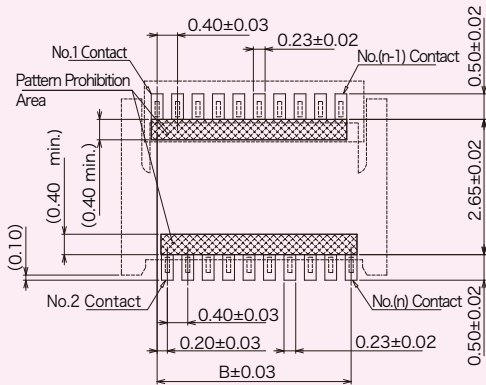
Dimensions

Even Number of Contacts



Recommended PCB Mounting Dimensions

Contacts are arranged zigzag from No.1 contact.



Recommended FPC Dimensions

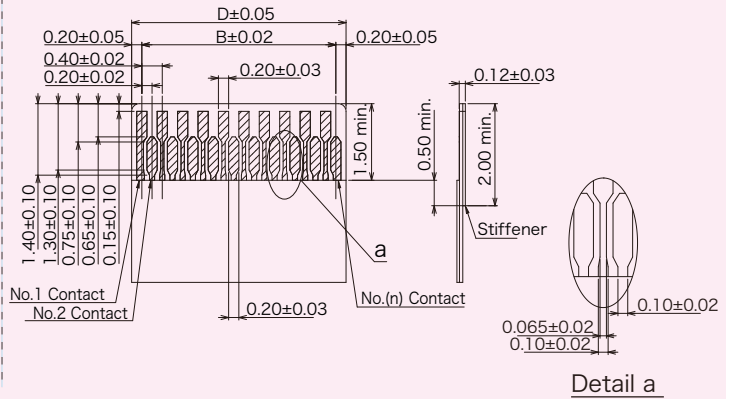


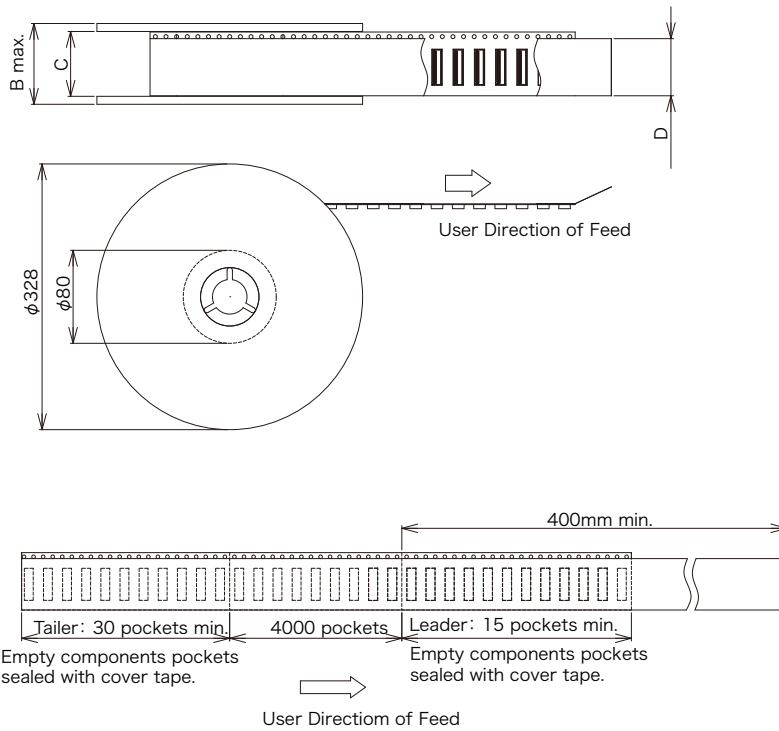
Table-1

Part Number	Number of Contact	A	B	C	D	E	F
FF26-39A-R11A-3H	39	9.10	7.60	8.05	8.00	3.80	(1.39)
FF26-80A-R11B	80	17.30	15.80	16.25	16.00	4.00	(1.59)

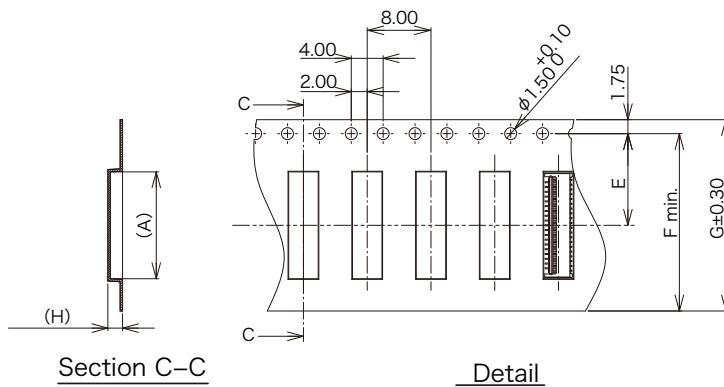
© Specifications and/or dimensions in this catalogue are subject to change without notice.
Your catalogue checking the latest specifications with our drawings would be highly appreciated.

► Package Specifications

■ Reel Dimensions



■ Emboss tape Dimensions



Part Number	Number of Contact	A	B	C	D	E	F	G	H
FF26-39A-R11A-3H	39	9.40	30.4	24.4	21.5	11.5	22.3	24.0	(1.84)
FF26-80A-R11B	80	17.6	38.4	32.4	25.5	14.2	28.4	32.0	(2.04)

■ Quantity : 4000pcs./ Reel

© Specifications and/or dimensions in this catalogue are subject to change without notice.
 Your catalogue checking the latest specifications with our drawings would be highly appreciated.