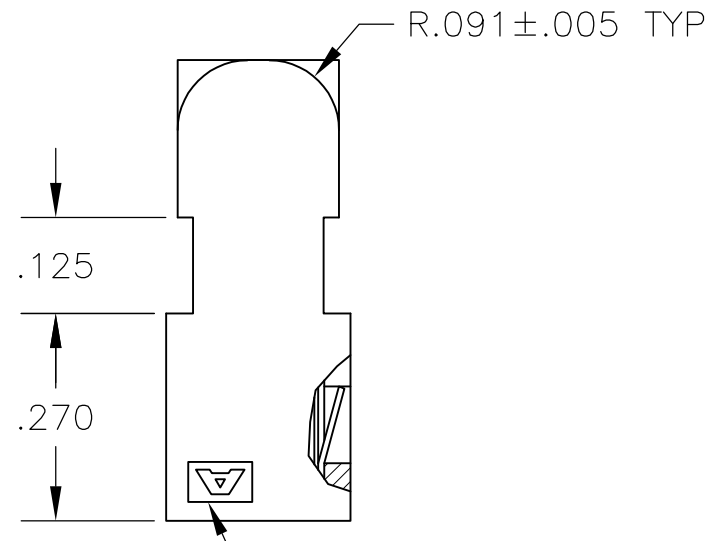
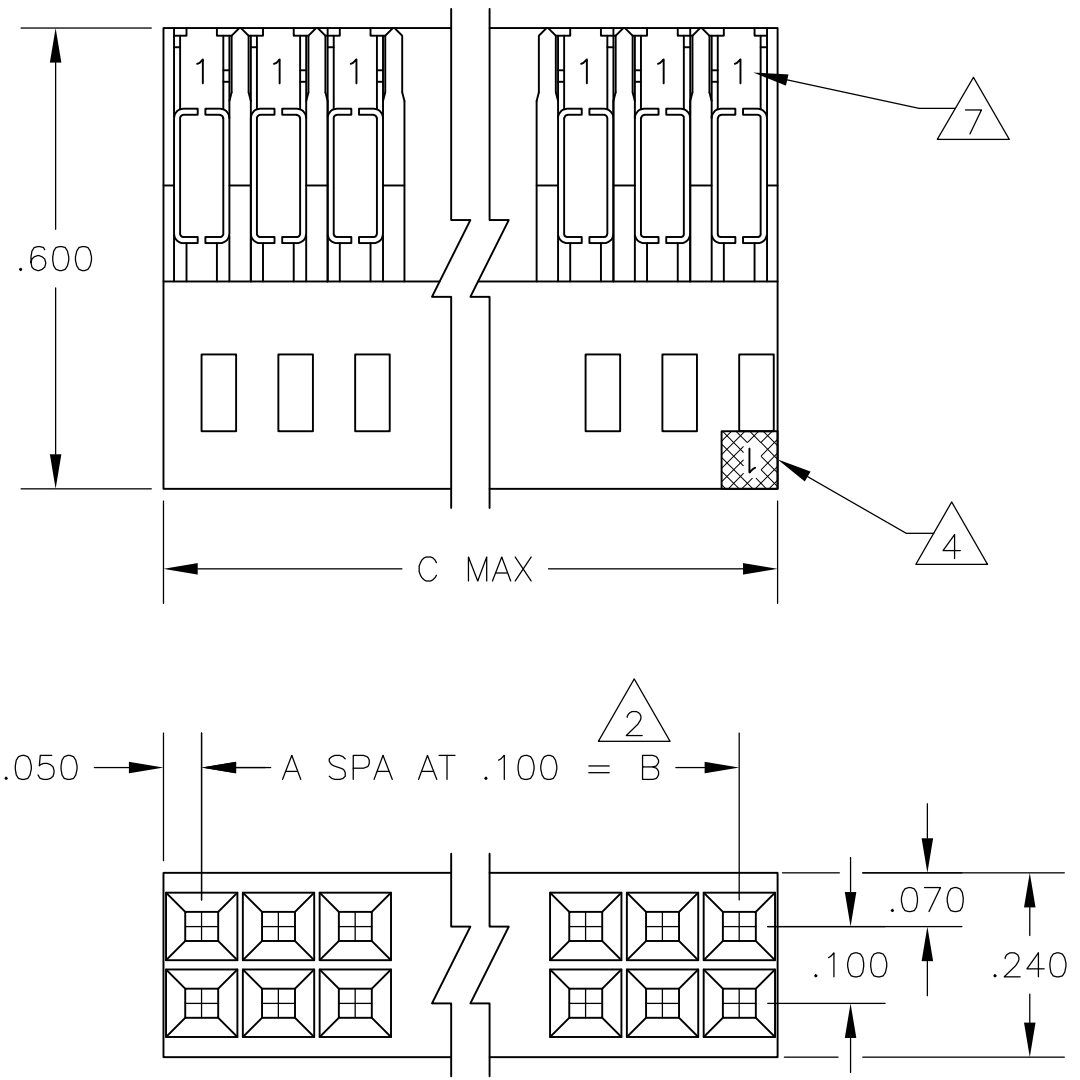


THIS DRAWING IS UNPUBLISHED. RELEASED FOR PUBLICATION
 © COPYRIGHT - By - ALL RIGHTS RESERVED.

LOC	DIST	REVISIONS			
P	LTR	DESCRIPTION	DATE	DWN	APVD
AD	00	S2	REVISED PER ECO-11-004587	11MAR11	RK HMR



ASSEMBLY PART NUMBER	C	B	A	NO OF POS
8-102393-0	3.200	3.100	31	64
7-102393-8	3.000	2.900	29	60
7-102393-5	2.700	2.600	26	54
7-102393-3	2.500	2.400	24	50
6-102393-8	2.000	1.900	19	40
6-102393-5	1.700	1.600	16	34
6-102393-4	1.600	1.500	15	32
6-102393-3	1.500	1.400	14	30
6-102393-2	1.400	1.300	13	28
6-102393-1	1.300	1.200	12	26
5-102393-9	1.200	1.100	11	24
5-102393-8	1.100	1.000	10	22
5-102393-7	1.000	.900	9	20
5-102393-6	.900	.800	8	18
5-102393-5	.800	.700	7	16
5-102393-4	.700	.600	6	14
5-102393-3	.600	.500	5	12
5-102393-2	.500	.400	4	10
5-102393-1	.400	.300	3	8
102393-1	.300	.200	2	6

ASSEMBLY PART NUMBER	C	B	A	NO OF POSN
3-102393-4	3.600	3.500	35	72
3-102393-3	3.500	3.400	34	70
3-102393-2	3.400	3.300	33	68
3-102393-1	3.300	3.200	32	66
2-102393-0	3.200	3.100	31	64
2-102393-9	3.100	3.000	30	62
2-102393-8	3.000	2.900	29	60
2-102393-7	2.900	2.800	28	58
2-102393-6	2.800	2.700	27	56
2-102393-5	2.700	2.600	26	54
2-102393-4	2.600	2.500	25	52
2-102393-3	2.500	2.400	24	50
2-102393-2	2.400	2.300	23	48
2-102393-1	2.300	2.200	22	46
1-102393-0	2.200	2.100	21	44
1-102393-9	2.100	2.000	20	42
1-102393-8	2.000	1.900	19	40
1-102393-7	1.900	1.800	18	38
1-102393-6	1.800	1.700	17	36
1-102393-5	1.700	1.600	16	34
1-102393-4	1.600	1.500	15	32
1-102393-3	1.500	1.400	14	30
1-102393-2	1.400	1.300	13	28
1-102393-1	1.300	1.200	12	26
1-102393-0	1.200	1.100	11	24
1-102393-9	1.100	1.000	10	22
1-102393-8	1.000	.900	9	20
1-102393-7	.900	.800	8	18
1-102393-6	.800	.700	7	16
1-102393-5	.700	.600	6	14
1-102393-4	.600	.500	5	12
1-102393-3	.500	.400	4	10
1-102393-2	.400	.300	3	8
102393-1	.300	.200	2	6

- 1 .000030 GOLD IN THE CONTACT AREA, .000050-.000100 TIN-LEAD IN THE TERMINATION AREA, ALL OVER .000050 NICKEL.
- 2 TOLERANCE NON-CUMULATIVE.
- 3 .000030 GOLD IN THE CONTACT AREA, .000050-.000100 TIN IN THE TERMINATION AREA, ALL OVER .000050 NICKEL.
- 4 MOLDED CIRCUIT #1 IDENTIFIER IN LOCATION SHOWN.
- 5 OBSOLETE PART NUMBER
- 6 USE WITH 26-30 AWG WIRE SIZE, .050 MAX INSULATION DIA., .015 MAX INSULATION WALL THICKNESS.
- 7 CONTACT IDENTIFICATION NUMBER "1" LOCATED IN THIS AREA.
- 8 AMP TRADEMARK (EITHER SIDE).
- 9 OBSOLETE PARTS: OBSOLETE CIS STREAMLINING PER D.RENAUD/D.SINISI

THIS DRAWING IS A CONTROLLED DOCUMENT.

DWN L.D.RINGLEY 7-1-85
 CHK P.C.deJONG 7-1-85
 APVD P.C.deJONG 7-1-85

TE Connectivity

ASSEMBLY, MASS TERMINATION, AMPMODU, DOUBLE ROW, .100 X .100 CL, #26-#30 AWG WIRE SIZE

SIZE A2 CAGE CODE 00779 DRAWING NO C=102393 RESTRICTED TO -

SCALE 4:1 SHEET 1 of 1 REV S2

MATERIAL HOUSING: FLAME RETARDANT THERMOPLASTIC, COLOR-BLACK CONTACTS: PHOS BRONZE

FINISH CONTACTS: SEE TABLE

TOLERANCES UNLESS OTHERWISE SPECIFIED:
 0 PLC ± -
 1 PLC ± -
 2 PLC ± -
 3 PLC ± .005
 4 PLC ± -
 ANGLES ± -

CUSTOMER DRAWING