



### Features


- ◇ For IF SAW filter
- ◇ High attenuation
- ◇ Single-ended operation
- ◇ Dual In-line Package
- ◇ No matching required for operation at 50Ω
- ◇ RoHS compliant (2002/95/EC), Pb-free

### Specifications

Parameter	Unit	Minimum	Typical	Maximum
Center Frequency	MHz	204.62	204.8	204.98
Insertion Loss	dB	-	22.8	24
3dB Bandwidth	MHz	1.2	1.26	-
40dB Bandwidth			1.97	2.0
Passband Variation	dB	-	0.4	1.0
Absolute Delay	usec	-	3.52	4.0
Ultimate Rejection ( $f_0 \pm 1.8\text{MHz}$ )	dB	50	51	-
Material Temperature coefficient	KHz/°C	0.21		
Substrate Material	-	ST42QZ		
Ambient Temperature	°C	25		
Operating Temperature Range	°C	-25	-	+85
Storage Temperature Range	°C	-45	-	+85
DC Voltage	V	0		
Input Power	dBm	-	-	10
ESD Class	-	1C		
Package Size	DIP2712 (27*12.8*4.7mm3)			

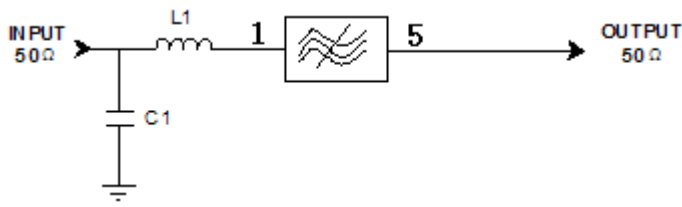
#### Notes:

1. All specifications are based on the test circuit shown;
2. In production, all specifications are measured by Agilent Network analyzer and full 2 port calibration at room temperature;
3. Electrical margin has been built into the design to account for the variations due to temperature drift and manufacturing tolerances;
4. This is the optimum impedance in order to achieve the performance show.

	<b>SIPAT Co., Ltd.</b> ( CETC No.26 Research Institute ) #14 Nanping Huayuan Road, Chongqing, China, 400060	Part Number	LBS20502	
		Rev. Date	2012-03-09	
		Ver.	1.0	Page 1/3

**Matching Configuration**

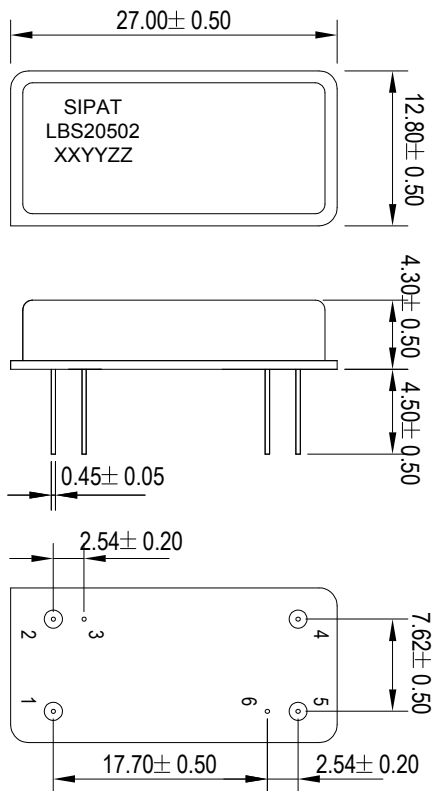
手动测试座



**L1=27nH C1=22pF**  
**Source/Load Impedance=50 ohm**

Notes - Component values may change depending on board layout.

**Package Dimension**



**Pad Configuration:**

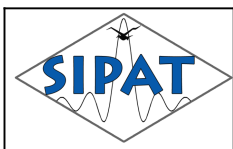
- Input 1
- Output 5
- Ground 2、3、4、6

**Marking Configuration:**

- 1) SIPAT: Manufacturer Name
- 2) LBS20502: Part Number
- 3) XXYY: Date(Year/month)
- 4) ZZ: Identified Code

**Package: DIP3512**

**Unit: mm**



**SIPAT Co., Ltd.**  
( CETC No.26 Research Institute )  
#14 Nanping Huayuan Road,  
Chongqing, China, 400060

Part Number	LBS20502	
Rev. Date	2012-03-09	
Ver.	1.0	Page 2/3



*Typical Performance*

