

**PLEASE CHECK WWW.MOLEX.COM FOR LATEST PART INFORMATION**

**Part Number:** [0684251891](#)  
**Status:** **Active**  
**Description:** 4.95mm (.195") Pitch Wire-to-Board Receptacle Housing, with Positive Latch, 18 Circuits, Upper Polarization Type, Black

**Documents:**

[Drawing \(PDF\)](#) [RoHS Certificate of Compliance \(PDF\)](#)  
[Product Specification PS-68187-001 \(PDF\)](#)

**General**

Product Family	Crimp Housings
Series	<a href="#">68425</a>
Product Name	N/A

**Physical**

Circuits (maximum)	18
Color - Resin	Black
Gender	Female
Glow-Wire Compliant	No
Lock to Mating Part	Yes
Material - Resin	Nylon
Number of Rows	3
Packaging Type	Bag
Panel Mount	No
Pitch - Mating Interface (in)	0.195 In
Pitch - Mating Interface (mm)	4.95 mm
Polarized to Mating Part	Yes
Stackable	No
Temperature Range - Operating	-40°C to +120°C

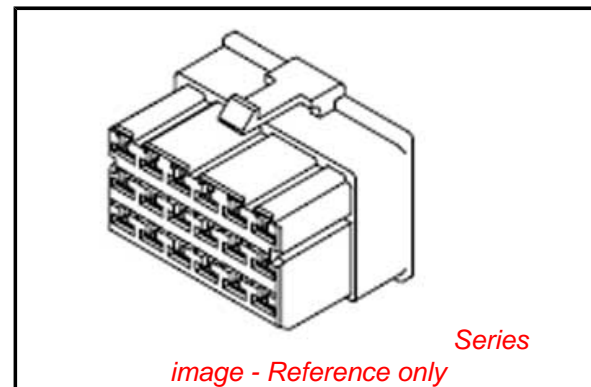
**Electrical**

Current - Maximum per Contact	5A
-------------------------------	----

**Material Info**

**Reference - Drawing Numbers**

Product Specification	PS-68187-001
Sales Drawing	SD-68425-001



**EU RoHS**

**ELV and RoHS Compliant**  
**REACH SVHC**  
 Not Reviewed  
**Halogen-Free Status**

**China RoHS**



**Not Reviewed**

**Need more information on product environmental compliance?**

Email [productcompliance@molex.com](mailto:productcompliance@molex.com)  
 For a multiple part number RoHS Certificate of Compliance, [click here](#)

Please visit the [Contact Us](#) section for any non-product compliance questions.

**Search Parts in this Series**

[68425Series](#)

**Mates With**

[68187 PCB Header](#)

**Use With**

[57994 Terminal](#)

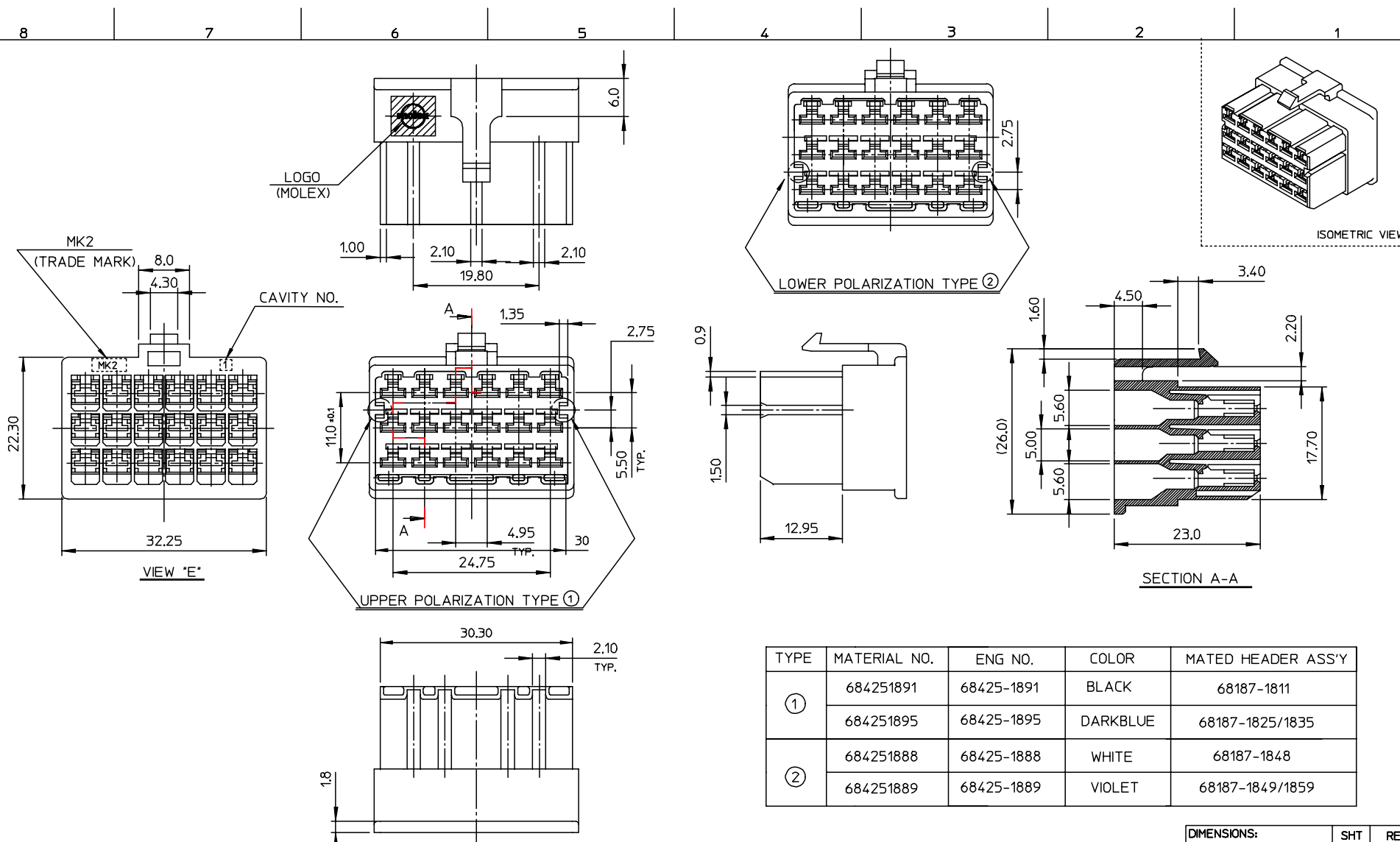
DWG. NO.  
SD-68425-001

SIMILAR ITEM

PROJECT NO.

B

DO NOT SCALE DRAWING  
DIMENSION IN METRIC



TYPE	MATERIAL NO.	ENG NO.	COLOR	MATED HEADER ASS'Y
①	684251891	68425-1891	BLACK	68187-1811
	684251895	68425-1895	DARKBLUE	68187-1825/1835
②	684251888	68425-1888	WHITE	68187-1848
	684251889	68425-1889	VIOLET	68187-1849/1859

NOTES

- 1. MATERIAL : POLYAMIDE66, UL94V-2
- 2. APPLICABLE TERMINAL : 57994-9802/9902

REVISED ECN NO. KOR2004-0017 DRWN. C.B.CHIN 03/07/02 CHK. W.Y.YANG APPR. C.W.LEE	QUALITY SYMBOLS MAJOR $\blacktriangledown$ = 0 CRITICAL $\nabla$ = 0	GENERAL TOLERANCES: (UNLESS SPECIFIED)		SCALE 1:1	DESIGN UNITS <input checked="" type="checkbox"/> mm <input type="checkbox"/> INCH	THIRD ANGLE PROJECTION <input type="checkbox"/> 1st ANGLE <input checked="" type="checkbox"/> 3rd ANGLE	DIMENSIONS: <input type="checkbox"/> mm <input type="checkbox"/> INCH <input checked="" type="checkbox"/> mm ONLY	SHT REV
		4 PLACES $\pm 0.$ $\pm -$ 3 PLACES $\pm 0.10$ $\pm -$ 2 PLACES $\pm 0.30$ $\pm -$ 1 PLACE $\pm 0.25$ $\pm -$	DRAWN BY & DATE C.B.CHIN 02/09/18 CHECKED BY & DATE W.Y.YANG 02/09/18 APPROVED BY & DATE C.W.LEE 02/09/18	TITLE: .110 W/B CONN. HOUSING-18P		MOLEX INCORPORATED		SHEET NO. 1 OF 1
B	REV	DRAFT WHERE APPLICABLE MUST REMAIN WITHIN DIMENSIONS		CAD FILENAME S684251891.MI	MATERIAL NO. SEE TABLE	DRAWING NO. SD-68425-001	SIZE B	