

**VI TELEFILTER**

**Filter specification**

**TFS 76E**

**1/5**

**Measurement condition**

Ambient temperature:	23	°C
Input power level:	0	dBm
Terminating impedance: *		
Input:	220 Ω	-40 pF
Output:	270 Ω	-31 pF

**Characteristics**

Remark:

The reference level for the relative attenuation  $a_{rel}$  of the TFS 76E is the minimum of the pass band attenuation  $a_{min}$ . The minimum of the pass band attenuation  $a_{min}$  is defined as the insertion loss  $a_e$ . The nominal frequency  $f_N$  is fixed at 76,5. The values for relative attenuation are guaranteed at ambient temperature. The frequency shift of the filter over temperature defined by the temperature coefficient of frequency  $TC_f$  is not included in the production tolerance scheme.

D a t a		typ. value		tolerance / limit	
<b>Insertion loss</b> (reference level)	$a_e$	10,4	dB	max.	12,5 dB
<b>Nominal frequency</b>	$f_N$				76,5 MHz
<b>Pass band</b>	PB	14,2	MHz	$f_N$	± 6,25 MHz
<b>Pass band ripple</b>	p-p	0,8	dB	max.	1,8 dB
<b>Bandwidth</b>					
1,4	dB	13,9	MHz		
3	dB	14,7	MHz		
15	dB	17,4	MHz	max.	17,6 MHz
30	dB	18,7	MHz	max.	18,9 MHz
<b>Mean relative attenuation</b>					
	$a_{rel}$				
86,47 MHz ...	91,53 MHz	47	dB	min.	38 dB
<b>Relative attenuation</b>					
	$a_{rel}$				
70,25 MHz ...	82,75 MHz	0,8	dB	max.	1,8 dB
50,00 MHz ...	64,44 MHz	50	dB	min.	44,0 dB
64,44 MHz ...	66,94 MHz	48	dB	min.	36,0 dB
86,47 MHz ...	91,53 MHz	30	dB	min.	26,0 dB
91,53 MHz ...	95,21 MHz	44	dB	min.	40,0 dB
95,21 MHz ...	100,00 MHz	48	dB	min.	40,0 dB
<b>Group delay ripple in PB</b>	p-p	75	ns		-
<b>Input power level</b>		-		max.	10 dBm
<b>Permissible DC voltage</b>		-		max.	0 V
<b>Operating temperature range</b>	OTR	-			-40 °C ... + 85 °C
<b>Storage temperature range</b>		-			-40 °C ... + 85 °C
<b>Temperature coefficient of frequency</b>	$TC_f$ **	-89	ppm/K		-

\*) The terminating impedances depend on parasitics and q-values of matching elements and the board used, and are to be understood as reference values only. Should there be additional questions do not hesitate to ask for an application note or contact our design team.

\*\*)  $\Delta f_c(\text{Hz}) = TC_f(\text{ppm/K}) \times (T - T_o) \times f_{T_o}(\text{MHz})$ .

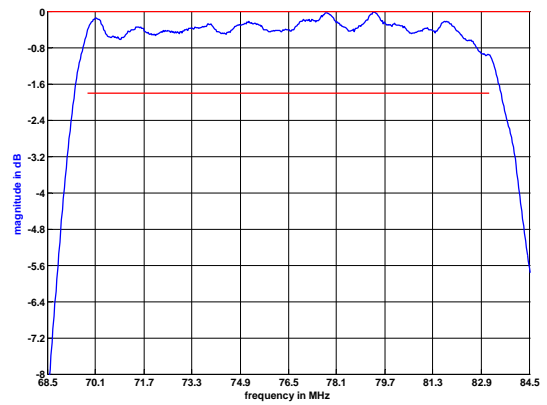
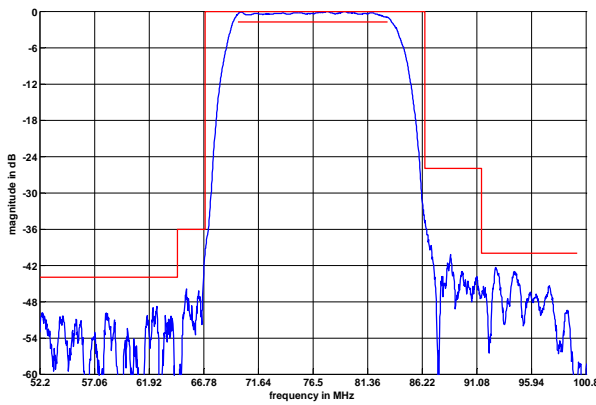
**Generated:**

**Checked / Approved:**

Tele Filter GmbH  
 Potsdamer Straße 18  
 D 14 513 TELTOW / Germany  
 Tel: (+49) 3328 4784-0 / Fax: (+49) 3328 4784-30  
 E-Mail: [tft@telefilter.com](mailto:tft@telefilter.com)

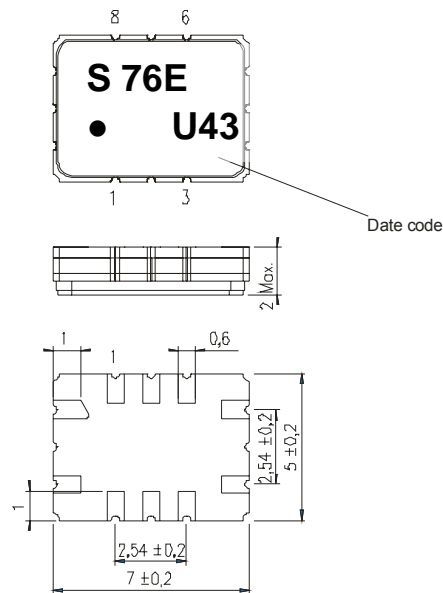
VI TELEFILTER reserves the right to make changes to the product(s) and/or information contained herein without notice. No liability is assumed as a result of their use or application. No rights under any patent accompany the sale of any such product(s) or information.

**Filter characteristic**



**Construction and pin connection**

(All dimensions in mm)

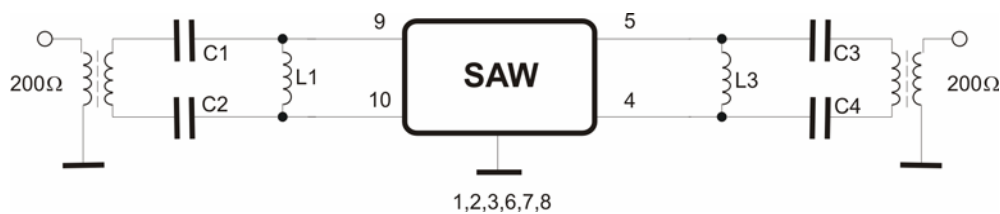


1	Ground
2	Ground
3	Ground
4	Output
5	Output
6	Ground
7	Ground
8	Ground
9	Input
10	Input

Date code: Year + week

U	2006
V	2007
W	2008
...	

**200 Ohm Test circuit**



**Tele Filter GmbH**  
 Potsdamer Straße 18  
 D 14 513 TELTOW / Germany  
 Tel: (+49) 3328 4784-0 / Fax: (+49) 3328 4784-30  
 E-Mail: [tft@telefilter.com](mailto:tft@telefilter.com)

VI TELEFILTER reserves the right to make changes to the product(s) and/or information contained herein without notice. No liability is assumed as a result of their use or application. No rights under any patent accompany the sale of any such product(s) or information.

**Stability characteristics**

After the following tests the filter shall meet the whole specification:

1. Shock: 500g, 1 ms, half sine wave, 3 shocks each plane;  
DIN IEC 68 T2 - 27
2. Vibration: 10 Hz to 500 Hz, 0,35 mm or 5 g respectively, 1 octave per min, 10 cycles per plan, 3 plans;  
DIN IEC 68 T2 - 6
3. Change of temperature: -55 °C to 125°C / 30 min. each / 10 cycles  
DIN IEC 68 part 2 – 14 Test N
4. Resistance to solder heat (reflow): reflow possible: three times max.;  
for temperature conditions refer to the attached "Air reflow temperature conditions" on page 4;

This filter is RoHS compliant (2002/95/EG, 2005/618/EG)

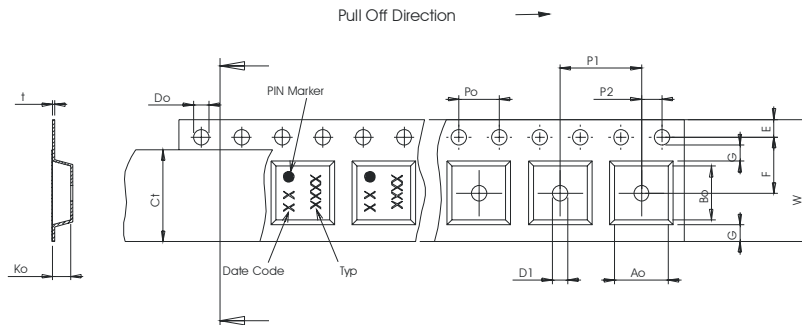
**Packing**

Tape & Reel: IEC 286 – 3, with exception of value for N and minimum bending radius;  
tape type II, embossed carrier tape with top cover tape on the upper side;

max. pieces of filters per reel:	3000
reel of empty components at start:	min. 300 mm
reel of empty components at start including leader:	min. 500 mm
trailer:	min. 300 mm

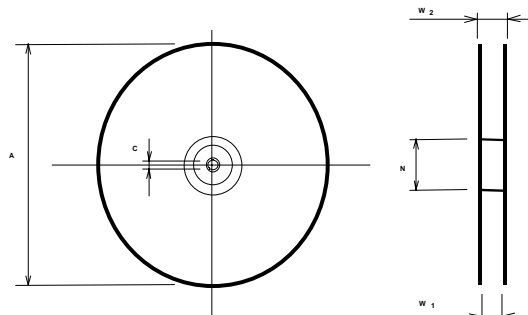
**Tape (all dimensions in mm)**

- W : 16,00 ± 0,3
- Po : 4,00 ± 0,1
- Do : 1,50 +0,1/-0
- E : 1,75 ± 0,1
- F : 7,50 ± 0,1
- G(min) : 0,60
- P2 : 2,00 ± 0,1
- P1 : 8,00 ± 0,1
- D1(min) : 1,50
- Ao : 5,50 ± 0,1
- Bo : 7,50 ± 0,1
- Ct : 13,5 ± 0,1



**Reel (all dimensions in mm)**

- A : 330
- W1 : 16,4 +2/-0
- W2(max) : 22,4
- N(min) : 50
- C : 13,0 +0,5/-0,2



The minimum bending radius is 45 mm.

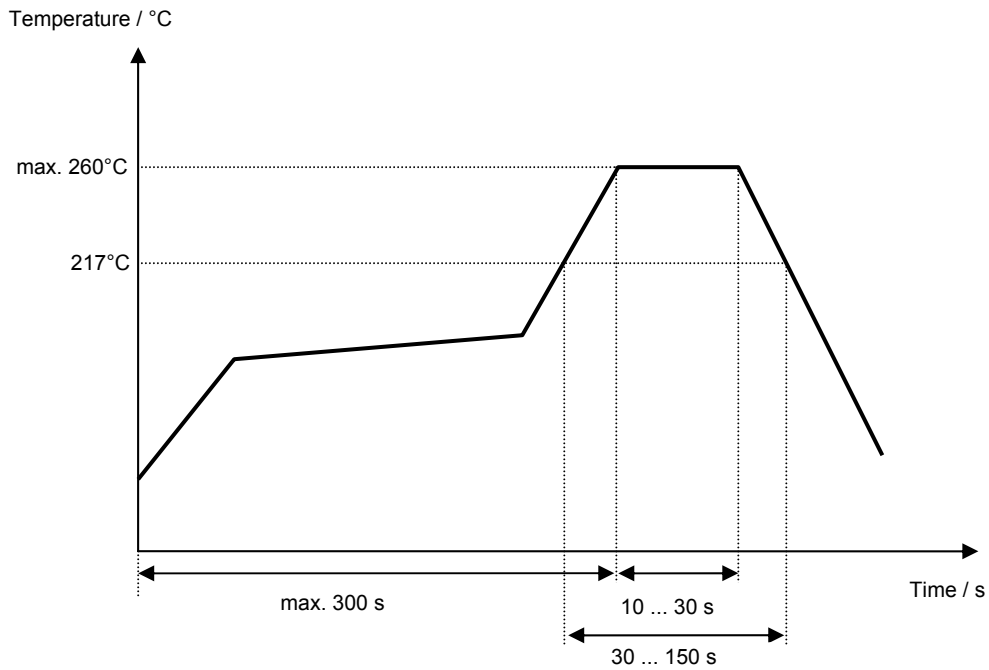
**Tele Filter GmbH**  
**Potsdamer Straße 18**  
**D 14 513 TELTOW / Germany**  
**Tel: (+49) 3328 4784-0 / Fax: (+49) 3328 4784-30**  
**E-Mail: [tft@telefilter.com](mailto:tft@telefilter.com)**

VI TELEFILTER reserves the right to make changes to the product(s) and/or information contained herein without notice. No liability is assumed as a result of their use or application. No rights under any patent accompany the sale of any such product(s) or information.

**Air reflow temperature conditions**

Conditions	Exposure
Average ramp-up rate (30°C to 217°C)	less than 3°C/second
> 100°C	between 300 and 600 seconds
> 150°C	between 240 and 500 seconds
> 217°C	between 30 and 150 seconds
Peak temperature	max. 260°C
Time within 5°C of actual peak temperature	between 10 and 30 seconds
Cool-down rate (Peak to 50°C)	less than 6°C/second
Time from 30°C to Peak temperature	no greater than 300 seconds

**Chip-mount air reflow profile**



**VI TELEFILTER****Filter specification****TFS 76E****5/5****History**

<b>Version</b>	<b>Reason of Changes</b>	<b>Name</b>	<b>Date</b>
1.0	- generation of development specification	Strehl	14.06.2005
1.1	- created filter specification - added terminating impedances - added typical values - added filter characteristics - changed construction and pin connection - added test circuit	Chilla	03.05.2006
1.2	- changed terminating impedances - changed remark - added temperature coefficient - changed construction and pin connection - changed test circuit	Chilla	25.10.2006

---

**Tele Filter GmbH**  
**Potsdamer Straße 18**  
**D 14 513 TELTOW / Germany**  
**Tel: (+49) 3328 4784-0 / Fax: (+49) 3328 4784-30**  
**E-Mail: [tft@telefilter.com](mailto:tft@telefilter.com)**

VI TELEFILTER reserves the right to make changes to the product(s) and/or information contained herein without notice. No liability is assumed as a result of their use or application. No rights under any patent accompany the sale of any such product(s) or information.