



JIANGSU CHANGJIANG ELECTRONICS TECHNOLOGY CO., LTD

## SOT-89 Encapsulate Three Terminal Voltage Regulator

### CJ79L09 Three-terminal negative voltage regulator

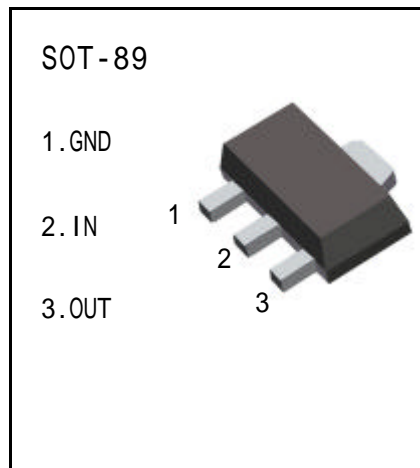
#### FEATURES

Maximum Output current

$I_{OM}: 0.1\text{ A}$

Output voltage

$V_o: -9\text{ V}$



#### ABSOLUTE MAXIMUM RATINGS ( Operating temperature range applies unless otherwise specified )

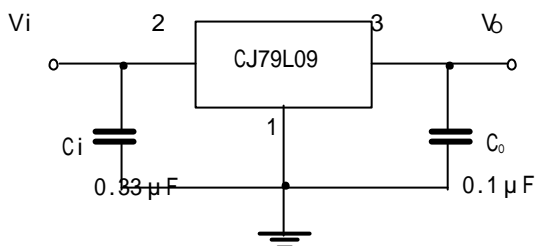
Parameter	Symbol	Value	Units
Input Voltage	$V_i$	-30	V
Operating Junction Temperature Range	$T_{OPR}$	0—+125	
Storage Temperature Range	$T_{STG}$	-55—+150	

#### ELECTRICAL CHARACTERISTICS

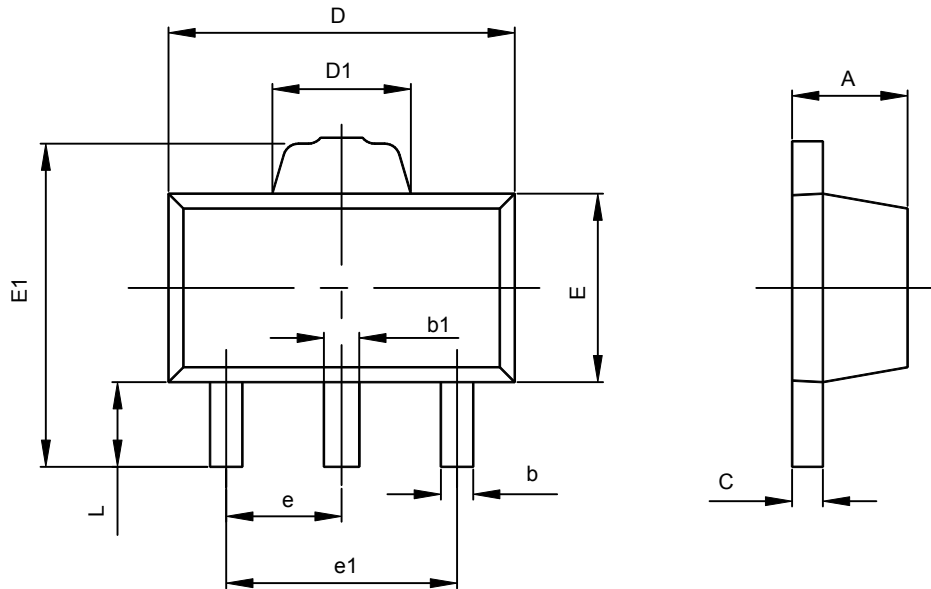
( $V_i=10V, I_o=40mA, 0 < T_j < 125$  ,  $C_1=0.33\mu F, C_o=0.1\mu F$ , unless otherwise specified )

Parameter	Symbol	Test conditions	MIN	TYP	MAX	UNIT
Output voltage	$V_o$	$V_i=-15V, I_o=40mA$	-8.64	-9	-9.36	V
Load Regulation	$V_o - I_o$	$V_i=-15V, I_o=1mA \sim 100mA$		12	90	mV
Line regulation	$V_o - V_i$	$V_i=-12.5V \sim -24V, I_o=40mA$		27	200	mV
Quiescent Current	$I_q$	$V_i=-15V, I_o=40mA$		3.5	6	mA
Output Noise Voltage	$V_n$	$B_w=10Hz \sim 100KHz, V_i=-15V, I_o=40mA$		210		$\mu V$
Ripple Rejection	RR	$V_i=-12V \sim -22V, I_o=40mA, e_i=1V_{P-P}, f=150Hz$	37	64		dB

#### TYPICAL APPLICATION



## SOT-89-3L PACKAGE OUTLINE DIMENSIONS



Symbol	Dimensions In Millimeters		Dimensions In Inches	
	Min	Max	Min	Max
A	1.400	1.600	0.055	0.063
b	0.320	0.520	0.013	0.020
b1	0.360	0.560	0.014	0.022
c	0.350	0.440	0.014	0.017
D	4.400	4.600	0.173	0.181
D1	1.400	1.800	0.055	0.071
E	2.300	2.600	0.091	0.102
E1	3.940	4.250	0.155	0.167
e	1.500TYP		0.060TYP	
e1	2.900	3.100	0.114	0.122
L	0.900	1.100	0.035	0.043