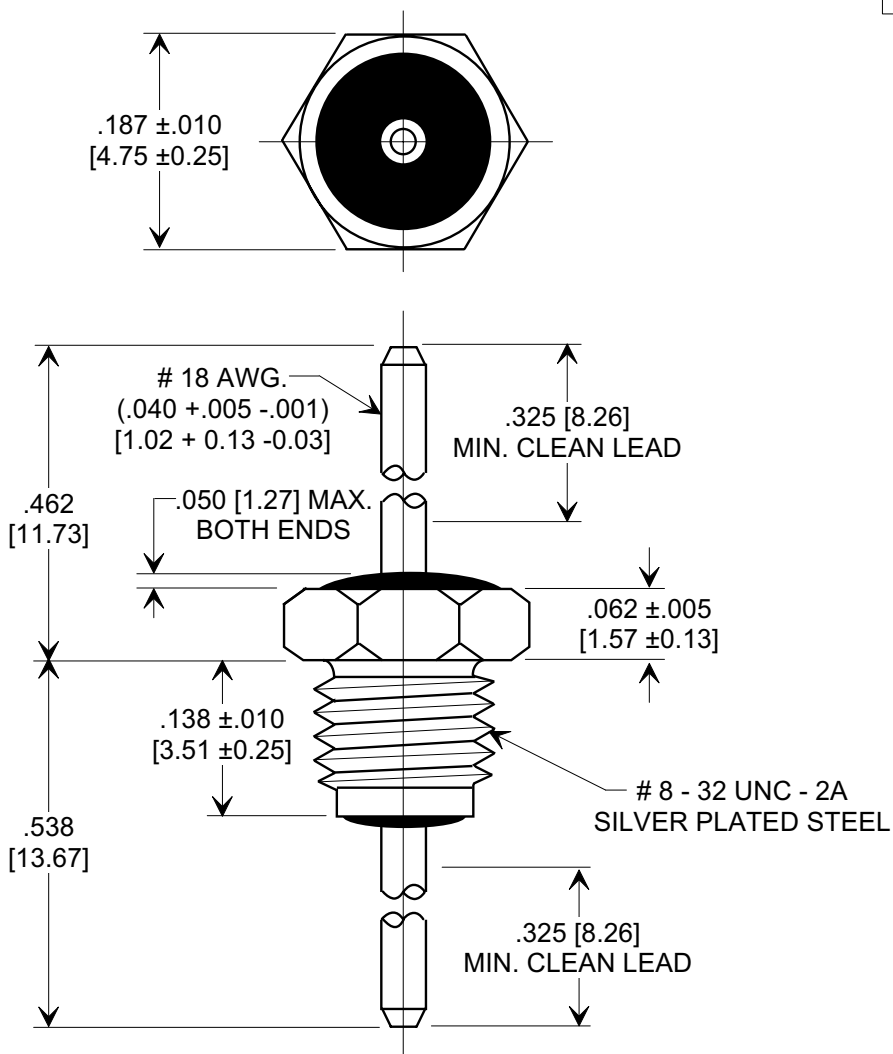
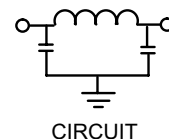
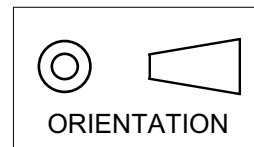


**MARKETING SALES DRAWING**

**DIMENSIONS IN INCHES - DO NOT SCALE THIS DRAWING**

**DIMENSIONS IN METRIC - [ ]**

Electrical Testing  
per Tusonix standard  
test plans and Mil-Std-202  
Test Methods.



NOTE:  
LEAD TO BE PHOSPHOR BRONZE 1/2 HARD  
TEMPER GOLD PLATED PER TUSONIX PPS 0014 CLASS D.

130 65	200	100	15	----	3	16	45
CAP. (pF)	85° C	125° C	CURRENT I <sub>dc</sub>	10 MHz	100 MHz	1 GHz	10 GHz
	WORKING VOLTAGE (VVdc)			MINIMUM NO LOAD INSERTION LOSS (dB) AT 25°C PER MIL-STD-220			

X-2015 Rev-0	REVISION RECORD		<b>TUSONIX</b> TUCSON, ARIZONA	--TOLERANCES-- Unless Otherwise Specified		Title <b>BUSHING STYLE EMI FILTER</b>		
	Original Release C.O.	WAS SK 7867-003. SM 04-05-01		DECIMAL ± .031 [0.79]	Drawn S.M. 03-19-01		Scale 6 X	
	20010329-2-10	0		ANGLES ±	Approved T.C. 03-19-01		A	
						4205-058		