

Common Mode Inductor

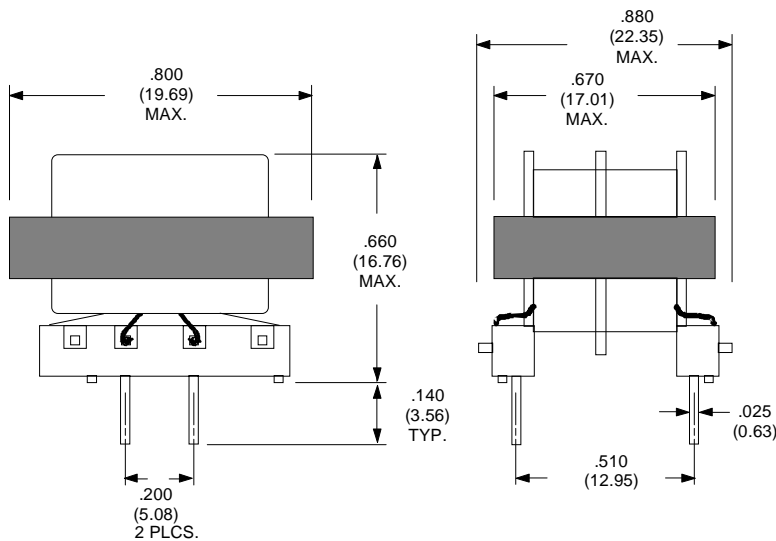
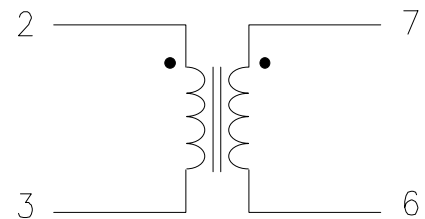
| Parameter | Min. | Typ. | Max. | Units |
|--------------------|-------|------|------|-------|
| Inductance * | 0.470 | | | mH |
| DCR | | | 78 | mΩ |
| Leakage Inductance | | 16 | | μH |
| I _{SAT} | | | 1.40 | Amps |
| SRF | | | 3037 | kHz |

Windings Balanced to within 1%
 Hipot (Isolation) 2500 VAC
 Insulation Resistance 100MΩ
 Temperature Rise 40°C.

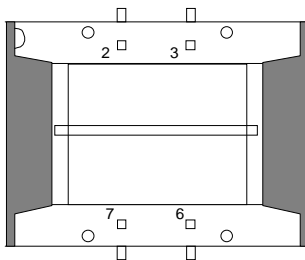
Designed to prevent noise
 emission in switching power
 supplies at input.

* Inductance tested at 100mV_{RMS} and 10 kHz

Schematic
 Diagram



Physical Dimensions
 inches (mm)



RHOMBUS P/N: **L-16011**

CUST P/N:

NAME:

DATE: **1/21/00**

SHEET: 1 OF 1