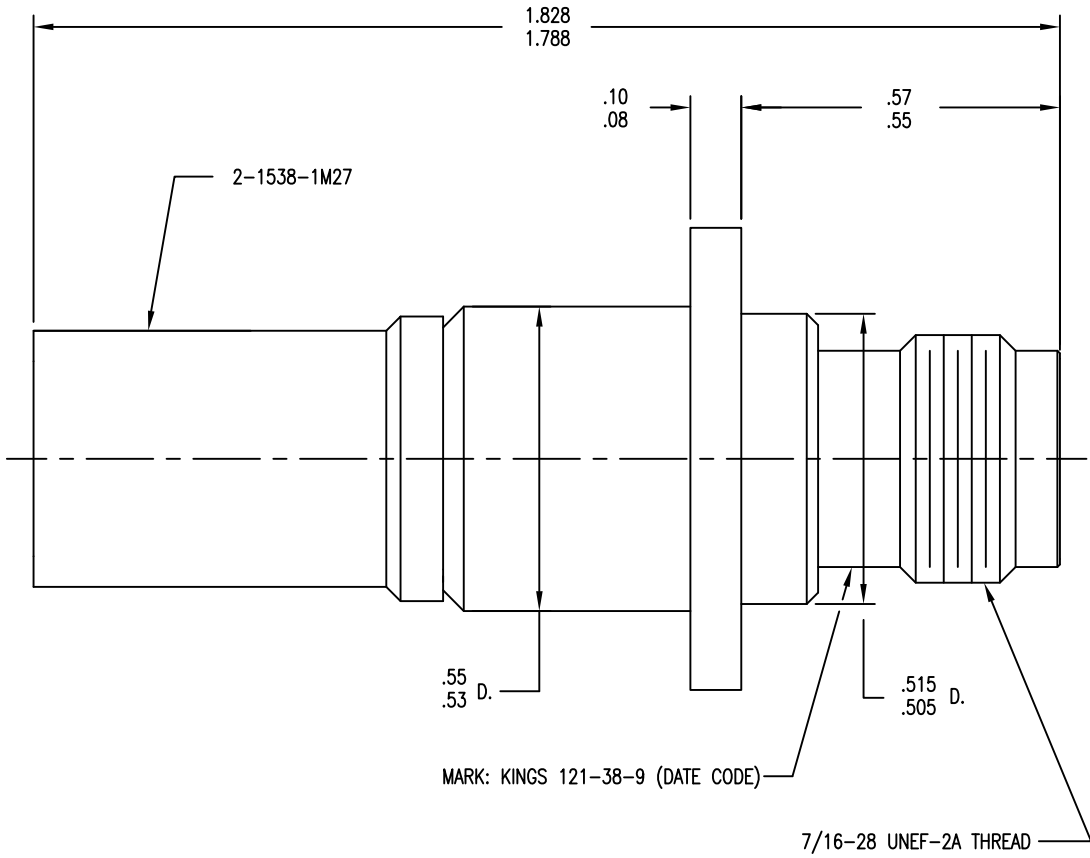
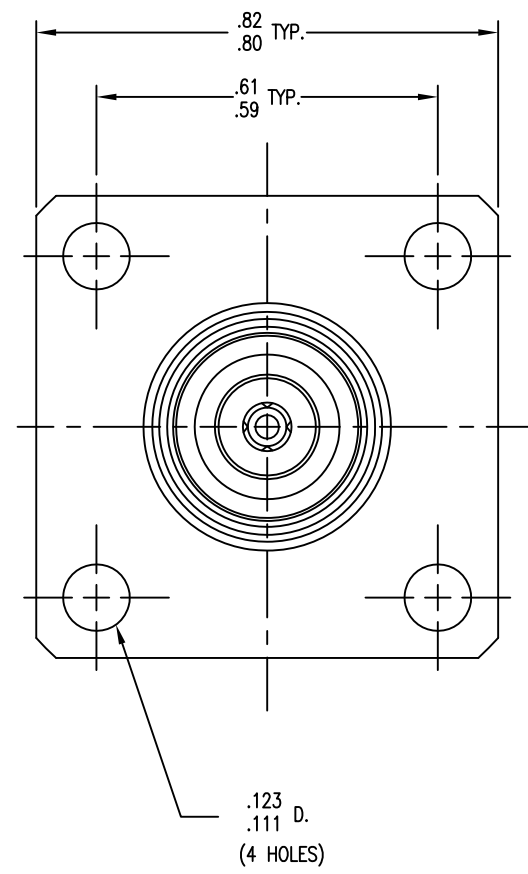


DASH NO.	M CODE	MADE FROM
----------	--------	-----------



MARK: KINGS 121-38-9 (DATE CODE)

7/16-28 UNEF-2A THREAD



121-38-9

REVISIONS	
ISSUE	CHANGES
B	ER 8354 RMS 05/28/08
C	REVISED PER DMF304 & ER33954 CY 07/18/11

### CUSTOMER SALES DRAWING

THIS DRAWING, THE DESIGNS AND IDEAS EMBODIED IN THE DEVICE TO WHICH IT RELATES, AND THE METHOD OF PRODUCING THE DEVICE, ARE THE PROPERTY OF WINCHESTER ELECTRONICS CORPORATION AND SHALL NOT BE EMPLOYED, COPIED, OR DISCLOSED TO ANYONE, IN ANY MANNER WITHOUT THE CONSENT OF WINCHESTER ELECTRONICS CORPORATION.

SCALE 4:1

APPROX SURFACE AREA

WAS: E-17388

CAGE CODE: 91836

REF:

JACK, PANEL, TNC

DRAWN KH	DATE 04/06/92
DESIGN JT	DATE 04/07/92
APPR.	DATE

**KINGS**  
by WINCHESTER ELECTRONICS

Winchester Electronics  
82 Barnes Industrial  
Road North  
Wallingford, CT 06492

**B**  
SIZE

121-38-9

**NOTES:**

- FOR USE WITH BOEING BMS13-65 OJ & ADAMS RUSSELL FC38Z CABLE.
- FOR CABLING INSTRUCTIONS SEE 3-546-2.
- FOR CRIMPING USE DIE KTH-2213.
- CENTER CONTACT (1-2288-2MA9) SUPPLIED UNASSEMBLED.
- FOR USE WITH .140 MAX. PANEL.
- INTERFACE PER MIL-STD-348, FIG. 313-2.
- MARK PACKAGE: KINGS 121-38-9 (DATE CODE)
- MATERIALS:  
CENTER CONTACT: BER. COP., ASTM-B-196  
K-GRIP SLEEVE: COMMERCIAL BRONZE, ASTM B135  
INSULATOR: TEFLON, ASTM-D-1710  
ALL OTHER METAL PARTS: BRASS, ASTM-B16

- FINISHES:  
CENTER CONTACT: .000050 MIN GOLD PLATE, PER ASTM-B-488  
OVER .000050 MIN NICKEL PER AMS-QQ-N-290 (RoHS)  
ALL OTHER METAL PARTS: .000050 MIN NICKEL PER AMS-QQ-N-N290  
OVER .000050 MIN COPPER PER ASTM B734 (RoHS)
- ELECTRICAL CHARACTERISTICS:  
NOMINAL IMPEDANCE: 50 OHMS  
FREQUENCY RANGE: DC TO 11 GHZ  
WORKING VOLTAGE: 500 VRMS  
INSERTION LOSS: DC TO 2.5 GHZ, 0.07 dB MAX  
2.5 TO 3.5 GHZ, 0.09 dB MAX  
3.5 TO 5.0 GHZ, 0.21 dB MAX

11. WEIGHT: 25.6 GRAMS

UNLESS OTHERWISE SPECIFIED

- ALL DIMENSIONS IN INCHES [MILLIMETERS].
- TOLERANCES:  
.XXX ±.004      .XX ±.010  
[.XXX ±.10]    [.XX ±.25]  
FRACTIONS: X/Y ±.010 [.25]      ANGLES: ± 1°

★ CRITICAL DIMENSIONS