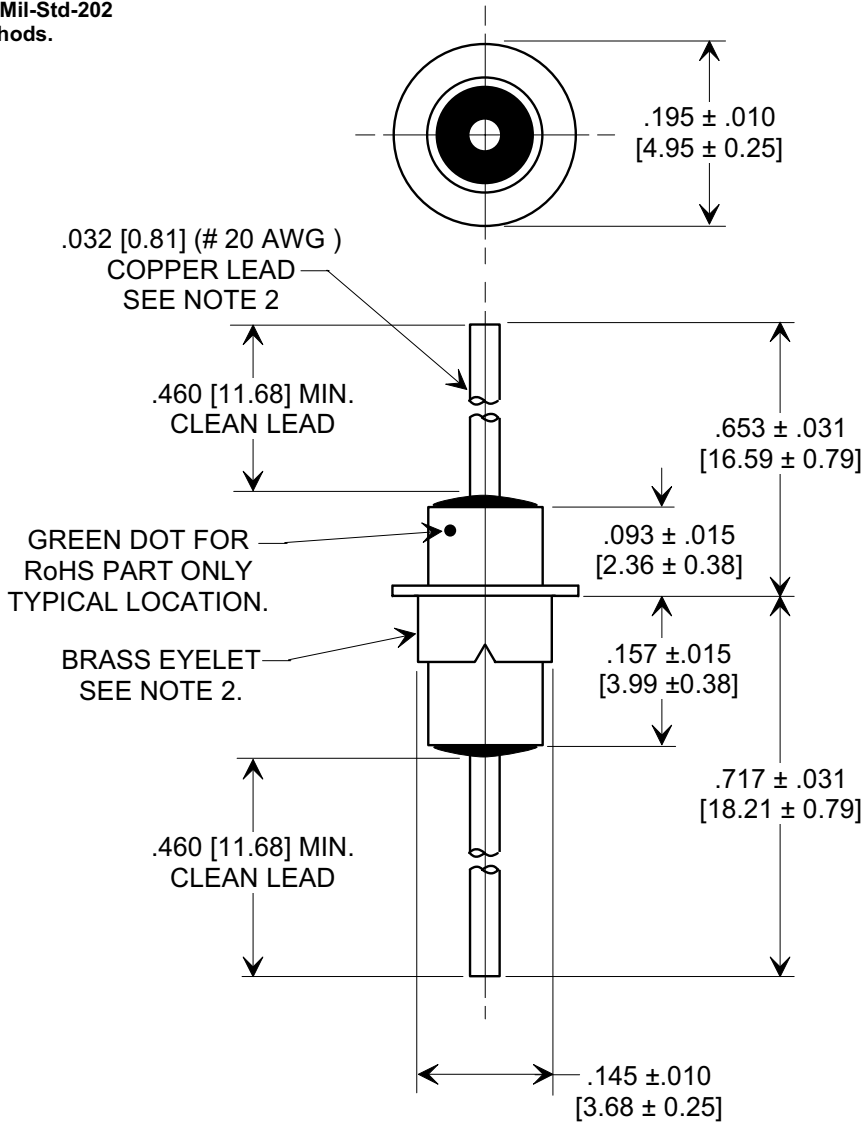
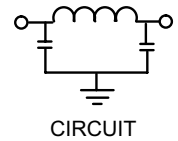
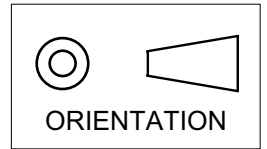


MARKETING SALES DRAWING
DIMENSIONS IN INCHES - DO NOT SCALE THIS DRAWING
DIMENSIONS IN METRIC - []

Electrical Testing
per Tusonix standard
test plans and Mil-Std-202
Test Methods.



NOTES:

- TUSONIX STANDARD PART NUMBER: 4101-069.
TUSONIX RoHS COMPLIANT PART NUMBER: 4101-069 LF.
CUSTOMER MUST SPECIFY STANDARD OR RoHS PART NUMBER WHEN ORDERING.
- LEAD FINISH: STANDARD PART #: 60/40 SOLDER PLATED. RoHS PART #: SILVER PLATED.
EYELET FINISH: STANDARD PART NO.: 60/40 SOLDER PLATED. RoHS PART NO. SILVER PLATED.
- PART MARKING: STANDARD PART: NO MARKING. RoHS PART: GREEN DOT.

MIN. CAP. (pF)	WORKING VOLTAGE (WVdc)		I.R. MIN. @ 100 (VDC.)	DWV (VDC)	CURRENT Idc. (A)	MINIMUM NO LOAD INSERTION LOSS (dB) AT 25°C PER MIL-STD-220			
	85°C	125°C				50 MHz	100 MHz	1 GHz	10 GHz
1750	----	125	10 G Ω	500	10	35	50	60	60

X-2015 Rev-0	REVISION RECORD		TUSONIX TUCSON, ARIZONA	--TOLERANCES-- Unless Otherwise Specified		Title EYELET STYLE EMI FILTER	
	Original Release C.O.	0		DECIMAL ± $\frac{\quad}{\quad}$	Drawn L.E. 09-13-04		
	WAS SK 8188-541. SM 10-05-04	20041004-2-03		1	ANGLES ± $\frac{\quad}{\quad}$	Approved T.C. 09-13-04	A 4101-069
	ADDED NOTES: DWV WAS 750. S.M. 09-16-05	20050829-1-33					