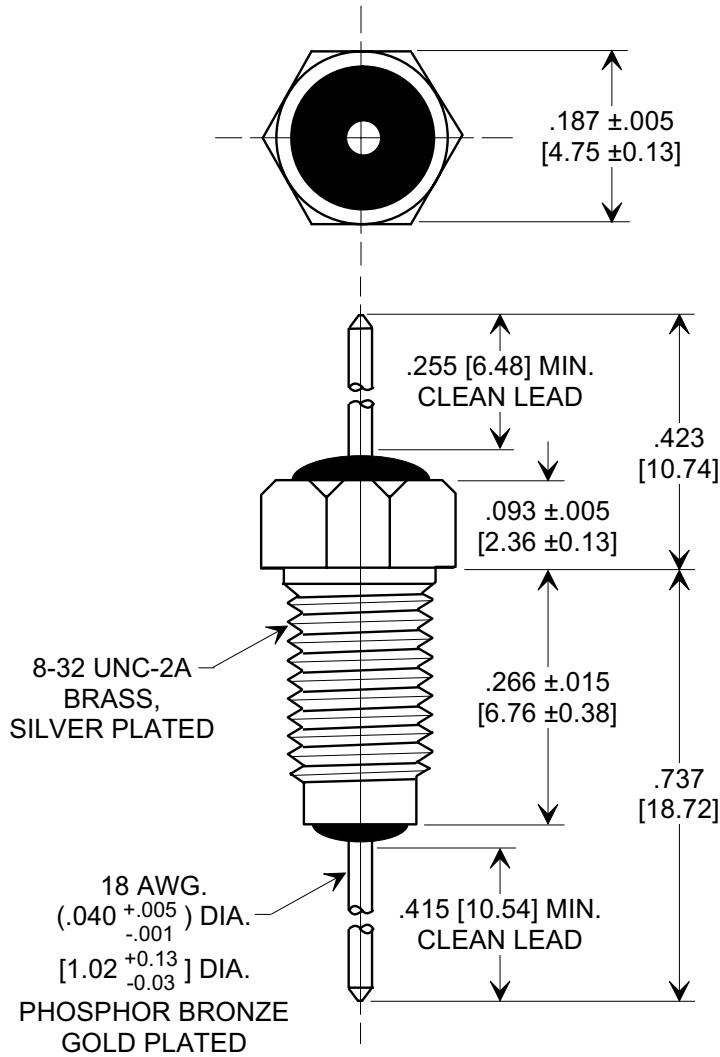
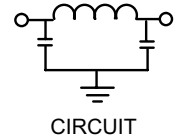
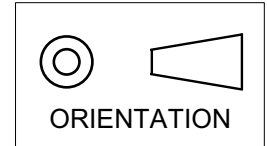


MARKETING SALES DRAWING

DIMENSIONS IN INCHES - DO NOT SCALE THIS DRAWING
DIMENSIONS IN METRIC - []

Electrical Testing
 per Tusonix standard
 test plans and Mil-Std-202
 Test Methods.



NOTES:

1. NO MOUNTING HARDWARE SUPPLIED.
2. TUSONIX STANDARD PART NUMBER: 4201-087.
 TUSONIX RoHS COMPLIANT PART NUMBER: 4201-087 LF.
 CUSTOMER MUST SPECIFY STANDARD OR RoHS PART NUMBER WHEN ORDERING.
3. PART MARKING: TRADEMARK AND VARIATION NUMBER ON HEX FLATS.
 STANDARD PART: BLACK INK. RoHS PART: GREEN INK.

MIN. CAP. (pF)	WORKING VOLTAGE (WVdc)		CURRENT (Idc)	I.R. MIN. @ 100 (VDC.)	DWV (VDC)	MINIMUM NO LOAD INSERTION LOSS (dB) AT 25°C PER MIL-STD -220			
	85°C	125 °C				10 MHz	100 MHz	1 GHz	10 GHz
2000	200	100	15A	10 G	250	5	38	63	70

X-2015 Rev-0 REVISION RECORD Original Release C.O. WAS SK 7867-001. L.E. 03-08-01 20010306-1-01 ADDED METRIC & BOTTOM LEAD TAPPER. S.M. 04-03-01 20010403-1-01 ADDED NOTES, IR & DWV. S.M. 08-01-05 20050726-2-43	--TOLERANCES-- Unless Otherwise Specified		Title BUSHING STYLE EMI FILTER	
	DECIMAL ± .031 [0.79]		Drawn S.M. 01-09-01 Scale 5X	
	ANGLES ±		Approved T.C. 01-09-01	
	TUSONIX TUCSON, ARIZONA		A	
			4201-087	