



Insulated Terminals Molded Diallyl

Single Turret

Please Refer to Figure 1624

Internal Threads

Part No.	"T" Thread	W	Y	Z	DWV
1624	2-56 x .07 deep	.156	.234	.390	5100

Please Refer to Figure 1625

Part No.	"T" Thread	W	Y	Z	DWV
1625	2-56 x .07 deep	.156	.234	.450	5100

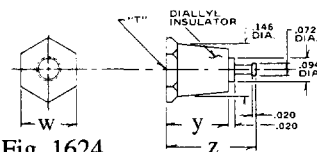


Fig. 1624

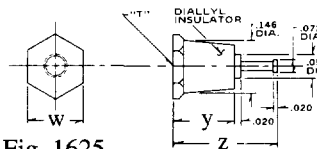


Fig. 1625

Single Turret

Please Refer to Figure 1620

External Threads

Part No.	"T" Thread	W	X	Y	Z	DWV
1620A	2-56	.156	.125	.234	.390	5100
1620B	2-56	.156	.188	.234	.390	5100
1620C	2-56	.156	.250	.234	.390	5100
1621A	2-56	.156	.125	.234	.450	5100
1621B	2-56	.156	.188	.234	.450	5100
1621C	2-56	.156	.250	.234	.450	5100

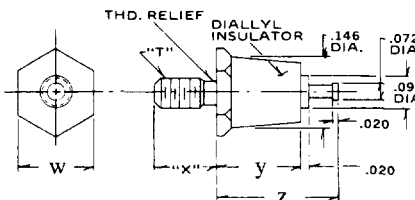


Fig. 1620

Double Turret

Please Refer to Figure 760

Internal Threads

Part No.	"T" Thread	W	Y	Z	DWV
760	4-40 x .21 deep	.250	.593	.940	8400
760A	6-32 x .21 deep	.250	.593	.940	8400
763	4-40 x .21 deep	.250	.531	.870	8000
763A	6-32 x .21 deep	.250	.531	.870	8000
766	4-40 x .21 deep	.250	.375	.720	6000
766A	6-32 x .21 deep	.250	.375	.720	6000

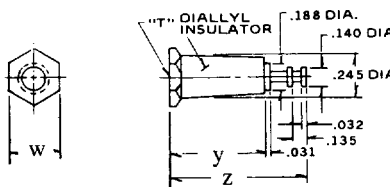


Fig. 760

Double Turret

Please Refer to Figure 780

Internal Threads

Part No.	"T" Thread	W	Y	Z	DWV
780	6-32 x .21 deep	.250	.593	.840	8400
780A	4-40 x .21 deep	.250	.593	.840	8400
783	6-32 x .21 deep	.250	.531	.780	8000
783A	4-40 x .21 deep	.250	.531	.780	8000

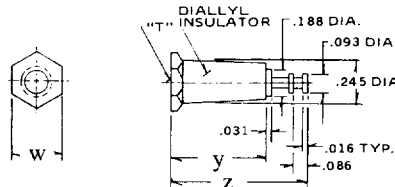


Fig. 780

Standard Plating Suffix to Part Number

See Page 93 for all plating options.

Terminal		Base
-7 (Au over Cu)	or	-12 (Ni over Cu)
-4 (Sb over Cu)		-12 (Ni over Cu)
-55 (Sn over Cu)		-12 (Ni over Cu)

Reflowed
760, 766, 780, 783 only

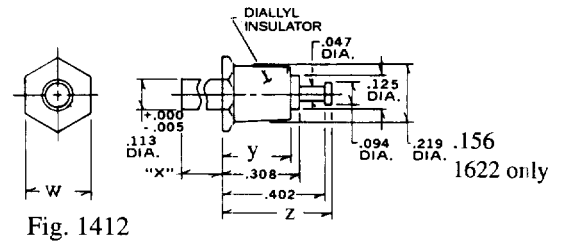
TOLERANCE: .xxx ±.010, .xx ±.016 (ALL DIMS. BEFORE PLATING)



Single Turret
Please Refer to Figure 1412

Swage Type

Part No.	"D" Barrel Diameter	W	X	Y	Z	SWAGE TOOL	DWV
1412A	.113	.250	.075	.266	.420	1412	6000
1412B	.113	.250	.105	.266	.420	1412	6000
1412C	.113	.250	.135	.266	.420	1412	6000
1412D	.113	.250	.165	.266	.420	1412	6000
1622B	.078	.156	.094	.234	.450	1622	5100
1622C	.078	.156	.125	.234	.450	1622	5100



Please Refer to Figure 1623

Part No.	"D" Barrel Diameter	W	X	Y	Z	SWAGE TOOL	DWV
1623B	.078	.156	.094	.234	.450	1623	5100
1623C	.078	.156	.125	.234	.450	1623	5100

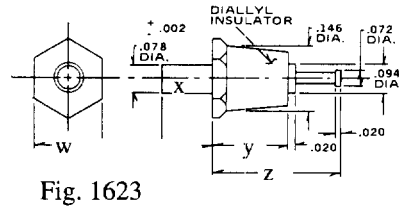


Fig. 1623

Double Turret
Please Refer to Figure 761

Swage Type

Part No.	"D" Barrel Diameter	W	X	Y	Z	SWAGE TOOL	DWV
761A	.101	.250	.094	.593	.940	761	8400
761B	.101	.250	.125	.593	.940	761	8400
762A	.101	.250	.094	.375	.720	762	6000
762B	.101	.250	.125	.375	.720	762	6000
767	.101	.250	.156	.531	.870	767	8000
768	.101	.250	.140	.531	.870	768	8000
769	.101	.250	.171	.531	.870	769	8000

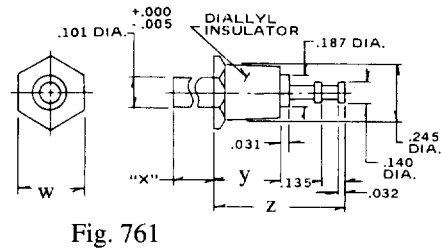


Fig. 761

Fig. 761

Standard Plating Suffix to Part Number

See Page 93 for all plating options.

- | | | |
|--|----|------------------|
| Terminal | | Base |
| -7 (Au over Cu) | or | -12 (Ni over Cu) |
| -4 (Sb over Cu) | | -12 (Ni over Cu) |
| -55 (Sn over Cu)
Reflowed
761, 762, 767 only | | -12 (Ni over Cu) |

TOLERANCE: .xxx ±.010, .xx ±.016 (ALL DIMS. BEFORE PLATING)