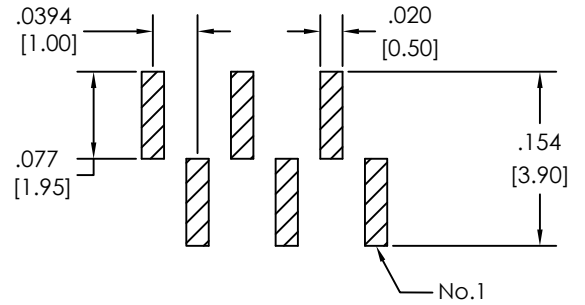
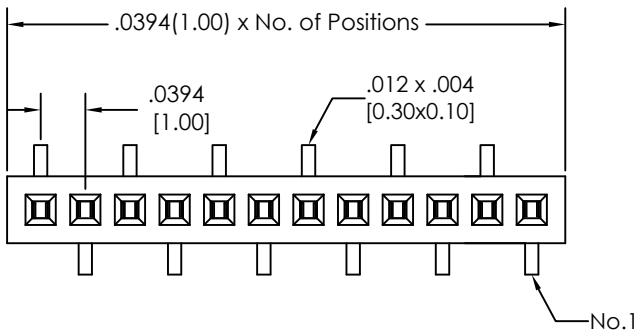
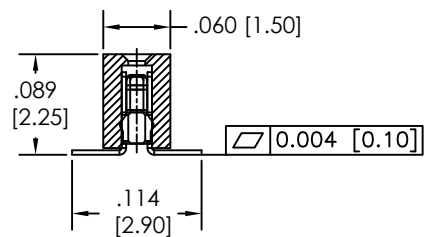
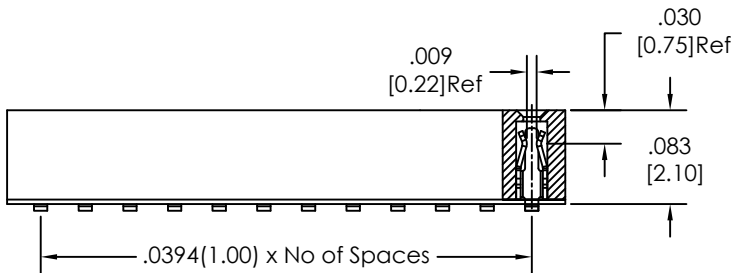


# Major League Electronics .0394 cl Surface Mount Box Contact - Straight



Recommended P.C. Board Layout



## Ordering Information

LSMSS-7  - S - 06 -  -  -  -  -  - LF

Pins Per Row  
02-40

Row Specification  
S = Single Row

Style  
06 = Surface Mount

Lead Free

Packing Information

TB = Tube

TB-0 = Tube without Pick and Place Pad

TR-P = Tape and Reel with Plastic Pick and Place pad

*If left blank, packaging at MLE's discretion*

*Pad may be metal, mylar or plastic*

Polarized Position

Leave blank if not needed

If required, specify empty pin position,  
e.g. 012 for Pin 12

## Specification

Plating Options	
- Gold Flash over entire Pin	F
- Matte Tin over entire pin	T

## Electrical:

Rated Current: 1.0AMP

Contact Resistance: 20mΩ max

Withstand Voltage: 300V AC

Insulation Resistance: 1000MΩ min

Operation Temperature: -40°C to +105°C

Max. Process Temperature

Wave Solder: Solder Temp 260 ±5°C

Immersion period: 5 ±5 secs.

Reflow Solder: Pre-Heat Temp: 100~150°C for 60 secs max.

Temperature: min. 210°C for 30 secs max.

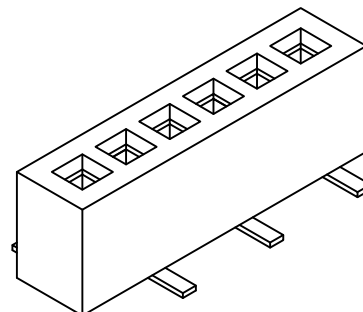
Peak Temperature: 260 ±5°C, 10 ±5 secs.

Manual Solder: 245 ±3°C 3~5 secs.

## Material:

Contact Material: Phosphor Bronze

Insulator Material: LCP, UL94V-0



Mates with:  
BSTC-7  
TSHC-7  
TSHCR-7

Products cut to specific sizes are uncancellable/nonreturnable

Parts are subject to change without notice

LSMSS-7-S SERIES

.0394 cl Single Row - Straight  
Surface Mount Box Contact

18 NOV 10

Scale  
NTS

UNLESS OTHERWISE SPECIFIED  
DIMENSIONS IN INCHES [MM]  
TOLERANCES ARE:

ONE PLACE DECIMALS ±.010  
TWO PLACE DECIMALS ±.006  
THREE PLACE DECIMALS ±.004  
ANGLES: X, ±3.0° .X±2.0°  
.XX±1.0° .XXX±0.5°



4235 Earnings Way, New Albany, Indiana, 47150, USA

1-800-782-3486 (USA/Canada/Mexico)

Tel: 812-944-7244

Fax: 812-944-7268

E-mail: mle@mlelectronics.com

Web: www.mlelectronics.com

Edition  
1

Sheet  
1/1